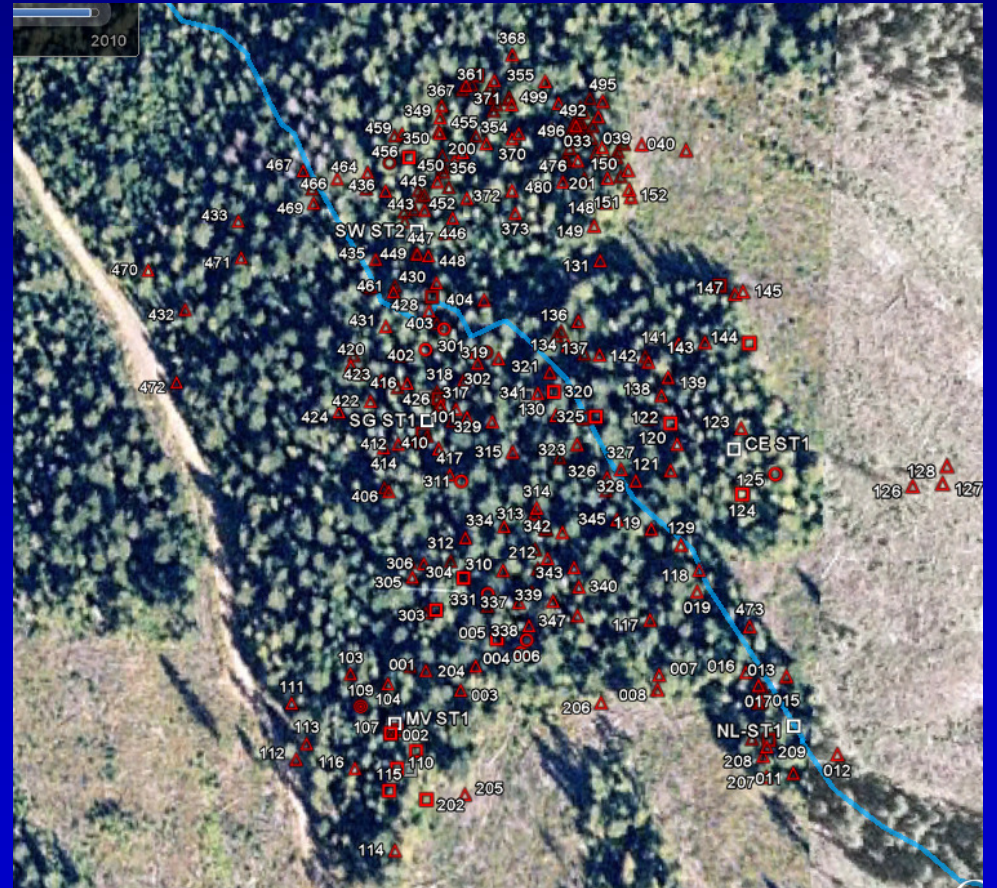
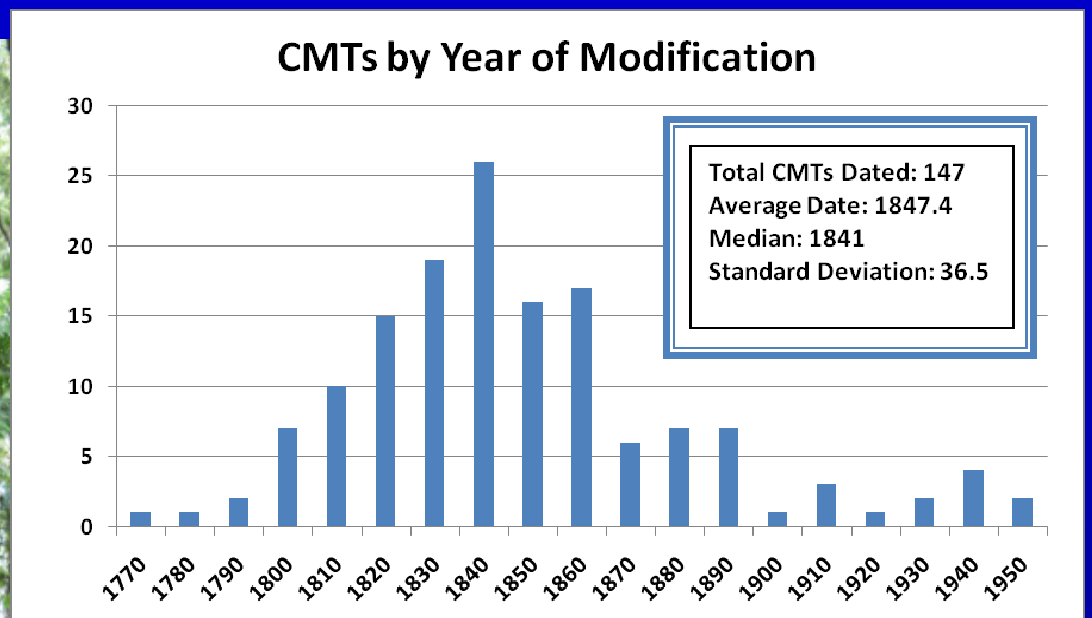
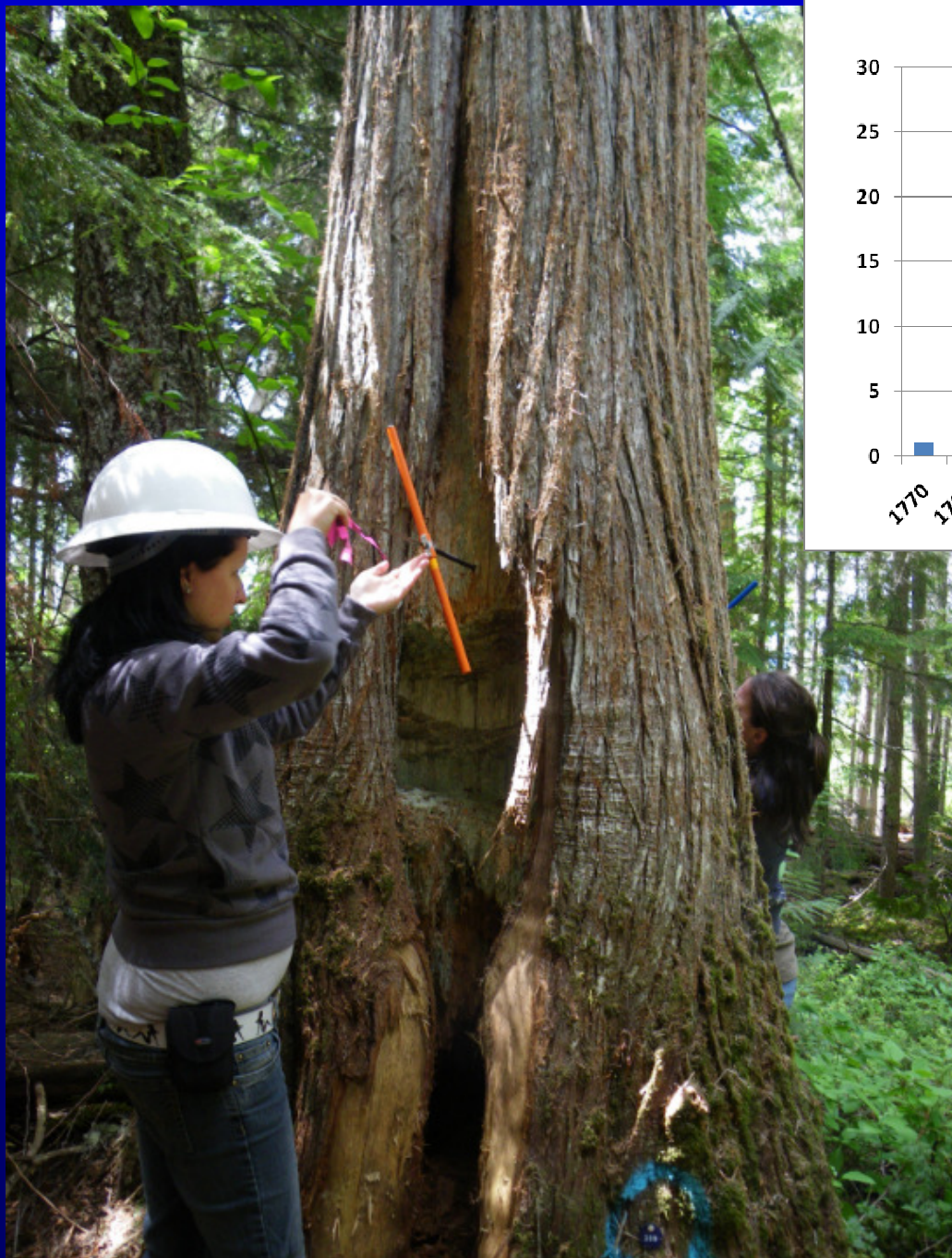


Fieldwork took place at a very large and well preserved culturally modified tree site in the South Ainslie watershed.



Location of documented culturally modified trees. All are western redcedar, with bark-harvest dates ranging from AD 1768 to 1952. This location was intensively used for traditional cedar harvest.



Kwantlen student Kristy Whitehurst collects a tree ring sample from CMT 109. This is the only tree which documents traditional wood harvest. Tree ring evidence shows this tree was partially cut sometime earlier than AD 1883.