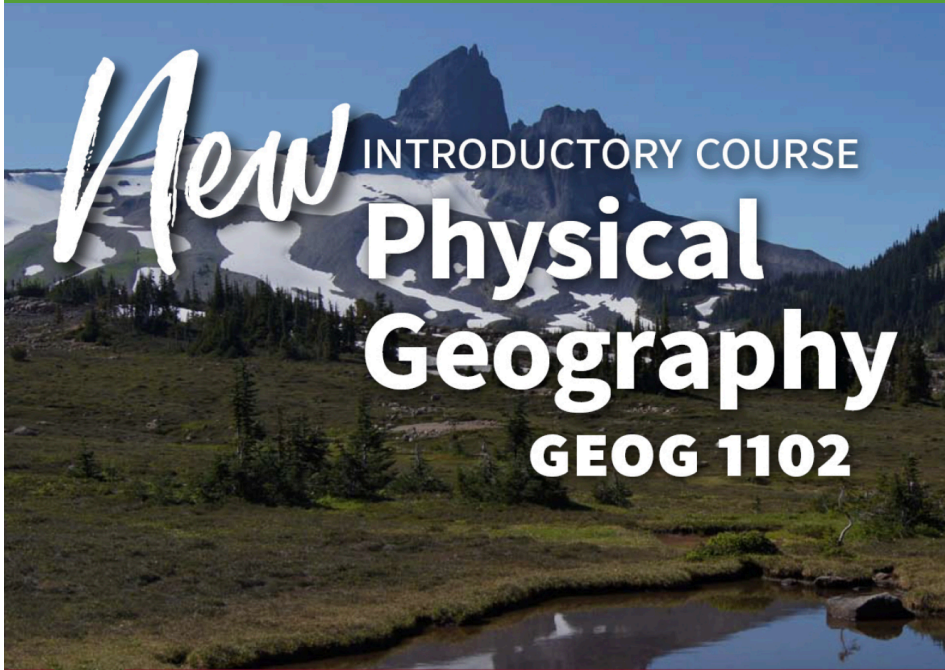


# KPU GEO-NEWS

NEWS FROM THE DEPARTMENT OF GEOGRAPHY & THE ENVIRONMENT

## Rollout of Geography Course Continues...



Curious about our planet and need a lab science? Ever wonder why mountains crumble or when dinosaurs became extinct? To find out, consider taking GEOG 1102 in Spring 2021.

➤ [kpu.ca/arts/geography](https://kpu.ca/arts/geography)

GEOG 1102 is a new course available for all KPU students in Summer 2021. There are no pre-requisites other than a curiosity about our earth.

This is a new four credit lab science course for all interested Arts students. You will learn about climate change and weather systems, as well as earth system processes. Students will also learn interesting analytical and mapping methods.

GEOG 1102 combines the former courses Atmospheric Science (1110) and Earth Science (1120). Students who have completed these two courses do not need to take GEOG 1102. And students who have completed GEOG 1102 do not need to take 1110 or 1120.

### KPU GEOG ALUMNI NEWS

#### LIFE AFTER GEOGRAPHY

KPU geographers continue to explore diverse career and educational interests after completing an Associate or Bachelor degree in Geography. Our former students have been accepted into prestigious programs across Canada and others work in the field. We are now forming an alumni network.

[Read more details inside...](#)

### PRACTICAL EXPERIENCE

#### SIGN-UP FOR ARTS 4800

Last year, three more student geographers joined our ARTS 4800 course to broaden their organizational experiences and skills. This Fall 2021 the course will once again support experiences in government, business and non-profits. If you are interested, please visit: <https://www.kpu.ca/arts/arts-courses/arts-practicum>

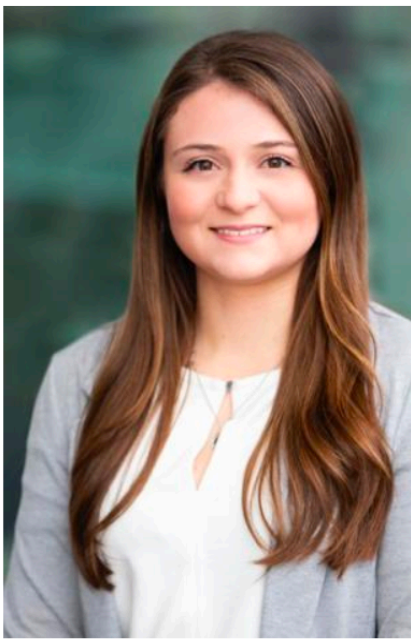
[Learn more inside Geo-News...](#)

### GEO-FORUM APRIL 20/21

#### MOBILITIES 2021 EVENT

Join us for the MOBILITIES 2021 Geo-Forum on April 20<sup>th</sup> (7-9pm) in an evening discussion with invited panelists about walkability, universal accessibility and transit affordability issues in the fast-changing urban-region South of the Fraser River. Free online registration, is here:

[https://ca01web.zoom.us/webinar/register/WN\\_w\\_nOqN\\_JTWG9c7JXT0F3sA](https://ca01web.zoom.us/webinar/register/WN_w_nOqN_JTWG9c7JXT0F3sA)



## KRISTI COLLINS & OUR GEO-LAB

### New Lab Instructor Joins KPU Geography and the Environment

The Department welcomes Kristi Collins as our new Lab Instructor. Her previous undergrad studies at UBC (BSc) focused on geology. Kristi also has a diversity of applied and educational experiences that will equip our KPU students with best practices.

Kristi will be leading the lab component of the new course, GEOG 1102 (Physical Geography), throughout 2021. Her previous exploratory mineral field work in various locales in B.C. and the Yukon, and her experience as an Education Program Coordinator with the Mineral Resources Program of B.C., will help students expand their knowledge about earth-systems geography.

## LIFE AFTER GEOGRAPHY: BUILDING A NEW ALUMNI NETWORK

### Dr. John Rose Tracking Geographers' Career & Grad School Work

Dr. John Rose hopes to cultivate a community of KPU Geography alumni, connected with each other and with current students. We know that our recent Geography grads have interesting scholarly experiences in diverse programs across Canada, including teacher education and grad programs in geography, resource and environmental management, and community or city planning. For example, last year Miranda Nguyen (BA Major, Applied Geog.) commenced a master's program in Urban & Regional Planning at the University of Alberta. Another 2020 KPU grad, international student Rick Feng (BA Major, Applied Geog.) was offered positions at two universities. He started the Master of Environment & Management program at Royal Roads University in Victoria. Meanwhile Ben Ricketts (BA Major, Applied Geog., 2020) commenced a Master's in Planning at Dalhousie University (Halifax, N.S.). Ben's research is about universal design and wayfinding "to help [public] spaces become user-friendly for all."

Our alumni are also taking their knowledge and skills to the workplace. One of our earliest program graduates, Malcolm Little (BA Major, Applied Geog., 2016), recently completed his MA in Geography and Environment at Western University (London, Ontario) and is currently employed in the geographic information systems (GIS) field. Another recent grad, Avneet Mathroo (BA Major, Applied Geog., 2020), has been working for a Metro Vancouver consultancy in facilities management, real estate, and energy sustainability. Aiden Shirley (BA Major, Applied Geog., 2020) is employed as a planning technician, working on solutions to Metro Vancouver's housing crisis. Full reports from these alumni and others can be viewed in the Alumni Updates area of the KPU Geography website. All KPU Geography graduates, from any year, are highly encouraged to contact John ([john.rose@kpu.ca](mailto:john.rose@kpu.ca)) to share their stories and to join our new alumni network.

**ALL GEOG ALUMNI ARE ENCOURAGED TO CONTACT DR. JOHN ROSE**

## GEOGRAPHERS AGAIN JOIN ARTS PRACTICUM

PUTTING KNOWLEDGE INTO ACTION WITH EXPERIENCES IN ARTS 4800

In Fall 2020 three KPU Geography majors, Roraigh Falkner, Bernie Shen and Liam McLaughlin, joined the **ARTS Practicum** course. Course Instructor Greg Chan reports that: “Roraigh was placed with [Amnesty International Canada](#), where he created an online course module for youth activists on anti-oppression; Liam worked with KPU's [Tiny Homes Project](#) to produce a promotional video/documentary short on sustainable housing; and Bernie joined the Northwest Culinary Academy of Vancouver to develop a [GIS map of its graduates](#).”

ARTS 4800 is a full semester (3-credit) course that introduces students to non-profit, business or government host organizations. Our students work with the host organization (4-6hrs/week) and a KPU supervising instructor during the Fall semester.

Some previous Geography student placement locations in 2019 included: BC Agricultural Land Commission; Columbia Institute; City of Surrey; Fraser Basin Council; Kwantlen Students Association amongst others.

### MORE INFORMATION:

<https://www.kpu.ca/arts/arts-courses/arts-practicum>



Contact email for employers: [ArtsPracticum@kpu.ca](mailto:ArtsPracticum@kpu.ca)

## Examples of work that students can do during the Practicum

- GIS mapping and analysis
- Research best practices
- Research and report on case studies
- Archival research
- Organize ideas
- Develop short surveys
- Draft memos, short reports and summaries
- Draft presentations
- Organize small events
- Provide webinar support
- Provide strategic analysis
- Provide support on social media
- Records management
- Prepare agendas, participate in meetings, and take meeting notes
- Shadow senior staff



Image Credit: Dola Pradhan

## GEOGRAPHY CLUB IN THE WORKS, NEEDS YOUR INTEREST & SUPPORT !

Eiren Lucero (KPU Student Geographer)

We are expressing our interest in creating a student club for everyone interested in Geography. We want to create a space for students passionate about geography to engage and collaborate. There are a few activities we would like to do, such as: watching documentaries, mini geography exercises, and collaborative work with the Department. We are also open to suggestions on which direction this new Geography Club will head.

We need a President, Vice President, and a Treasurer, in addition to 10 members to be considered a club under KSA. Thanks for your interest!

Please contact: [eiren.lucero@email.kpu.ca](mailto:eiren.lucero@email.kpu.ca) or [yhanukshna.sivapalan@email.kpu.ca](mailto:yhanukshna.sivapalan@email.kpu.ca) if you would like to be a Geography club executive or a member.

JOIN  
**the  
geog  
club.**

- + SHARE, NETWORK, AND **CREATE**
- + EXPAND YOUR LEARNING IN **HUMAN GEOGRAPHY AND PHYSICAL GEOGRAPHY**
- + COLLABORATE IN A SPACE WITH **LIKE-MINDED INDIVIDUALS**

ARE YOU INTERESTED IN JOINING THE CLUB?  
Please contact **Eiren** or **Yhanu** to help create the Kwantlen Geography Club today!

**EIREN:**  
(eiren.lucero@email.kpu.ca)

**YHANU:**  
(yhanukshna.sivapalan@email.kpu.ca)

## Canadian Association of Geographers National Meeting @UNBC June 7-11, 2021. Online Conference Call for Papers & Posters.

STUDENTS ENCOURAGED TO SUBMIT CONFERENCE POSTERS & PAPERS

KPU student geographers are encouraged to submit papers or scholarly posters and e-attend the 71<sup>st</sup> Annual CAG Conference online in early June this year. The theme of this Canadian Association of Geographers Annual Conference (hosted by the University of Northern British Columbia) is: "Embracing connectivity: Coming together and moving forward." This virtual gathering provides a great opportunity to hear the latest in human and physical geographic research from students, researchers and instructors from across Canada. And this year you can attend all or just a portion of this event from the convenience of your home.

**CAG 2021 Annual Meeting & Conference. Online from UNBC this June.**

To register or gain more information: <https://www.cag-acg.ca/cag2021>

This April we are hosting a free public geo-forum on **Post-Pandemic mobility issues**. This event is organized by the Department of Geography & the Environment, with Faculty of Arts funding support.

# MOBILITIES 2021

A free public online geo-forum about mobility, accessibility, walkability and transit affordability South of the Fraser River



All Images (David Sadoway)

A moderated discussion with Stan Leyenhorst (Universal Access Advocate), Sandy James (Planner/Walktivist), Douglas McLeod (Transportation Planning Manager, City of Surrey), Victoria Fast (Geography Professor, University of Calgary)



● **ONLINE** ●  
**April 20**  
**2021**  
**( 7-9pm PT )**



Access to safe mobility and affordable public transit have been recognized as key issues South of the Fraser.

Please join us for this free online event sponsored by KPU's Department of Geography and the Environment.



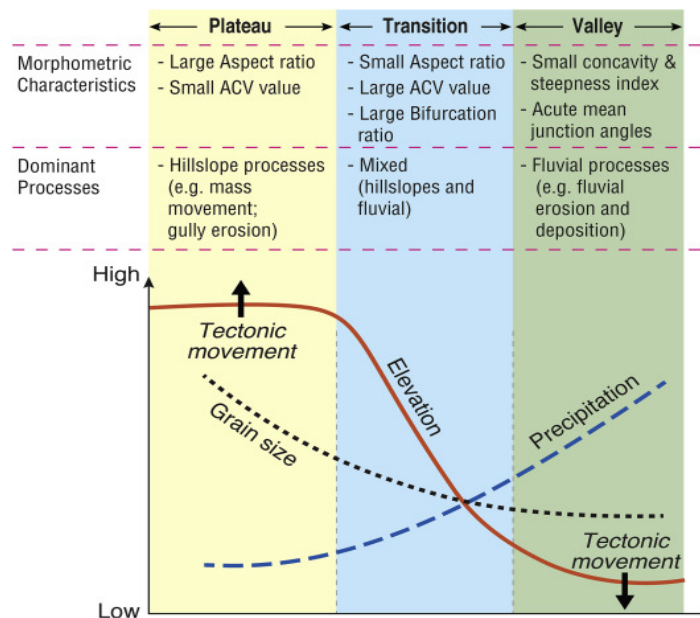
Please Register Here:

[https://ca01web.zoom.us/webinar/register/WN\\_w\\_nOqN\\_JTwG9c7JXT0F3sA](https://ca01web.zoom.us/webinar/register/WN_w_nOqN_JTwG9c7JXT0F3sA)

**GEOGRAPHY &  
 ENVIRONMENT**  
 KWANTLEN POLYTECHNIC UNIVERSITY

## FACULTY QUICK TAKES

- Geographer Dr. Leonora King** is a [KPU Open Education Resource \(OER\) Grant recipient](#). She is working on a comprehensive open access **natural disasters textbook** that will emphasize the British Columbia context, but be versatile for international adaptation. She also recently published this interesting scientific commentary: Koppes, M., King, L. (2020). Beyond x,y,z(t); Navigating New Landscapes of Science in the Science of Landscapes. *Journal of Geophysical Research: Earth Surface*, 125, <https://doi.org/10.1029/2020JF005588>. Dr. King also collaboratively published a piece: Yu Zhang, Marwan A. Hassan, Leonora King, Xudong Fu, Erkan Istanbuluoglu, Guangqian Wang. (2020). Morphometrics of China's Loess Plateau: The spatial legacy of tectonics, climate, and loess deposition history. *Geomorphology*, <https://doi.org/10.1016/j.geomorph.2020.107043>. In this paper, Leonora and co-authors use Geographic Information Systems and multivariate statistical analysis to explore the influence of tectonics and climate on drainage basins in China's Loess Plateau. The image below summarizes their findings:



- Geography Chair Dr. Dola Pradhan** has received a [Shastri Institutional Collaborative Research Grant](#) (SICRG) to investigate, “the Socio-Economic Impacts of Cyclones and the Coping Strategies of the Local Communities in Odisha, India with a Special Focus on Women”. During this 2-year project Dr. Pradhan will be collaborating with Dr. Archana Srivastava from the Birla Institute of Technology (BITS, Pilani), India.
- Geographer Dr. David Sadoway** was a KPU UN SDGs Open Pedagogy Fellow in 2020-21. He also recently co-published a chapter with Satyarupa Shekhar (Sadoway, D. & Shekhar, S., “Changing Infrastructure in Urban India: Critical Reflections on Openness and Trust in the Governance of Public Services,” pp.115-130), in [Critical Perspectives on Open Development](#) , MIT Press 2021), <https://doi.org/10.7551/mitpress/11480.003.0010>. This recently published chapter is freely downloadable (open access, online book).

## SUMMER 2021 Online Course Offerings Announced

An interesting range of courses are available during the **Summer 2021 Semester** for our Geography Program and all KPU students. Consider registering for one or more of our courses, including: **Geog 1101 (Human Geography)**; **Geog 1102 (Physical Geography)**; **Geog 1160 (Geography of British Columbia)**; **Geog 2140 (Regional Geography of Canada)**; **Geog 2380 (Qualitative Methods in Geography)**; **Geog 2400 (Introduction to Geographic Information Systems [GIS])**; **Geog 3310 (Natural Hazards)**; and **Geog 3320 (Environment and Resources)**. If you have any questions about these courses, please contact a KPU Arts Counsellor, our Geography Chair or the course Instructor.

-- Dr. Dola Pradhan (Chair, KPU Geography)

### GEOGRAPHY PROFILE: KATHY FITZPATRICK

Human Geographer Brings Important Perspectives on Labour Mobility in Canada and Beyond



Kathy Fitzpatrick is a valued part-time faculty member in our Department.

She teaches Geography 1101, Human Geography and Geography 2140, Regional Geography of Canada; and has previously instructed Geography 4501, Gender and Geography.

Kathy is also working on her Doctoral Research and she is involved in pan-Canadian research on employment-related geographical mobility. This research explores how people move at various scales (from local to global) seeking work in sectors as diverse as trucking/transport, construction, fisheries, healthcare, agriculture and the service sector. She has been focusing her research on mobile women home care workers, particularly in Newfoundland and Labrador.

Her work examined the situations facing both unionized and non-unionized workers and some of the risks they face in unsafe homes, such as violence and harassment. Kathy suggests that her research found: "There were differences in working conditions and the degree of risk that home care workers experienced when commuting daily or commuting over a long distance for extended periods." Kathy adds, "I enjoyed doing this research and look forward to talking about mobility, work, place, or any other geographic topic of interest."

For more information about her research and course teaching you may contact Kathy Fitzpatrick at: [kathy.fitzpatrick@kpu.ca](mailto:kathy.fitzpatrick@kpu.ca)

Kathy's Faculty Listing is: <https://www.kpu.ca/arts/geography/faculty/kathy-fitzpatrick-0>

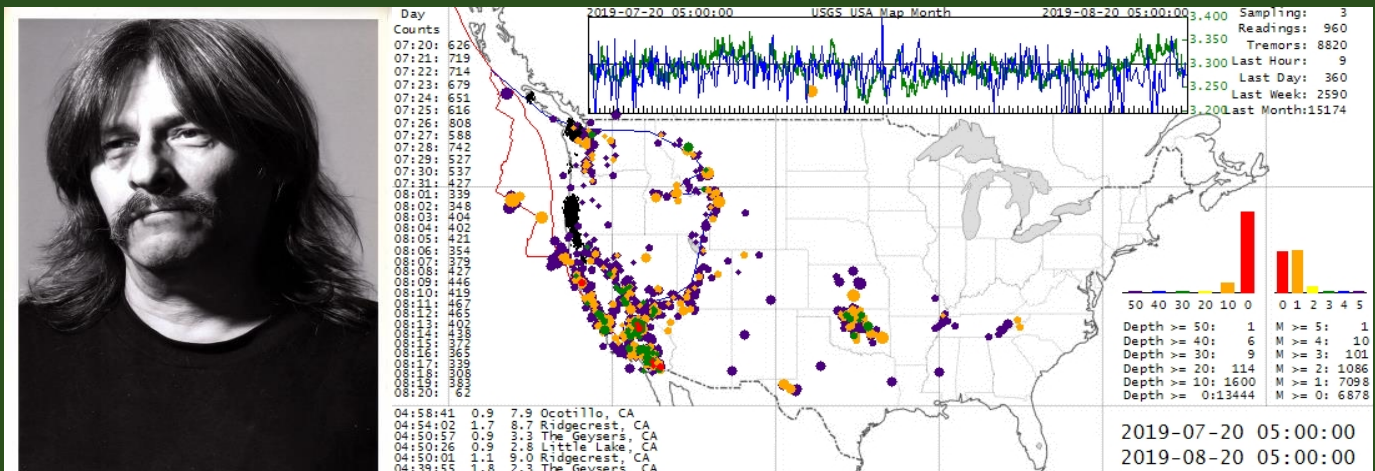
# BRIAN NADJIWON MEMORIAL SCHOLARSHIP FUND

We are announcing the creation of a new scholarship for *Indigenous students pursuing geoscience education in British Columbia*: the Brian Nadjiwon Memorial Scholarship Fund. Brian, the namesake of the scholarship, was a member of the Chippewas of Nawash and a Kwantlen Polytechnic University (KPU) student who passed away in the summer of 2020.

When Brian passed away in August of 2020, he was working with faculty at KPU to position himself to develop his passion for geoscience in graduate school. He mobilized his skills in computers to develop his keen interest in geologic processes in the Pacific Northwest, writing elaborate programs to scrape data from various government websites on earthquake events and geologic processes, plotting them in time and space, and developing theories to explain the patterns that he uncovered.

Shortly after his passing, Brian’s family, friends and KPU geography faculty decided to take up a collection of funds for Indigenous scholars dedicated to his own legacy of studies. Inspired by Brian’s remarkable life and his passion for geoscience, this scholarship aims to bring geoscience into the lives of more Indigenous students.

We are working to create an endowment of \$50,000 CAD (minimum) through the Engineers and Geoscientists BC Foundation for the Brian Nadjiwon Memorial Scholarship Fund. Donations will be tax deductible through the EGBC Foundation (<https://www.egbc.ca/About/Programs-Initiatives/Foundation>). Personal donations can also be made to the Brian Nadjiwon Memorial Scholarship Fund GoFundMe site: <https://gofund.me/45f4c1cc>.



**Left:** Chippewas Scholar, Brian Nadjiwon.

**Right:** Brian designed a computer program to automatically scrape earthquake data from the USGS and map earthquake distribution and depth. In the top panel, he scraped data from NOAA on axial seamount seafloor depth and temperature and plotted them in time. He was deeply curious to know if and how the various components of the geology of the Pacific Northwest might be interconnected.