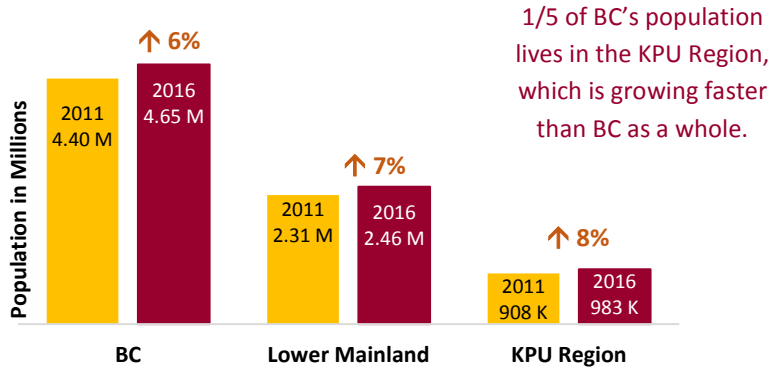
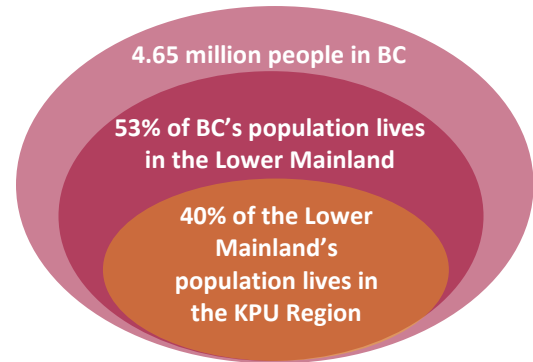


Strategic Planning Research Brief: Regional Population Trends

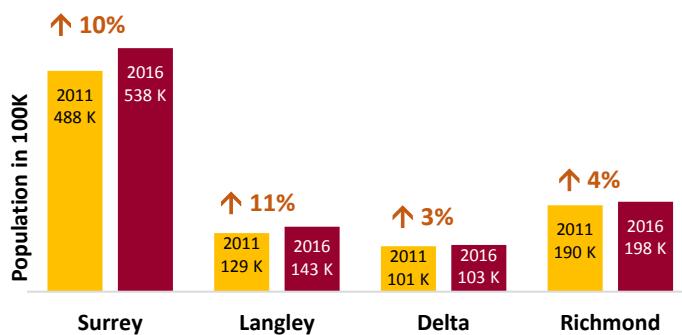
POPULATION CHANGES (2011 TO 2016)¹



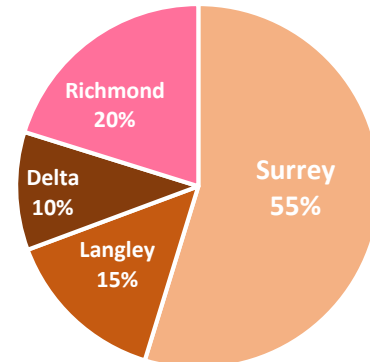
2016 POPULATION SHARE OF BC



KPU REGION POPULATION CHANGES

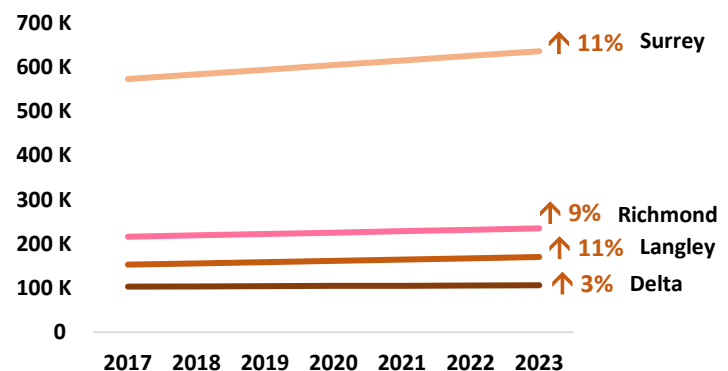
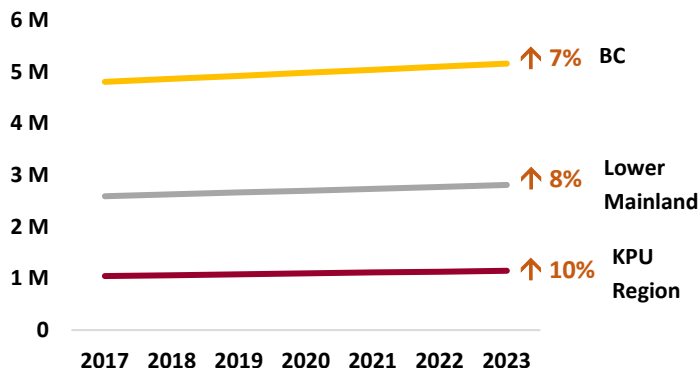


2016 POPULATION SHARE OF KPU REGION



POPULATION PROJECTIONS (2017 TO 2023): BC, LOWER MAINLAND, KPU REGION²

The population of the KPU Region is expected to grow at a faster rate than BC as a whole. Within the KPU Region, the Surrey and Langley school districts are projected to have the fastest growing populations.



¹ All 2011 to 2016 comparison data from the Statistics Canada Census. The KPU Region is Surrey, White Rock (reported with Surrey), Langley City and DM (reported together), Richmond, and Delta.

² All population projection data from BC Stats' P.E.O.P.L.E Sub-Provincial Population Projections (August 2017).