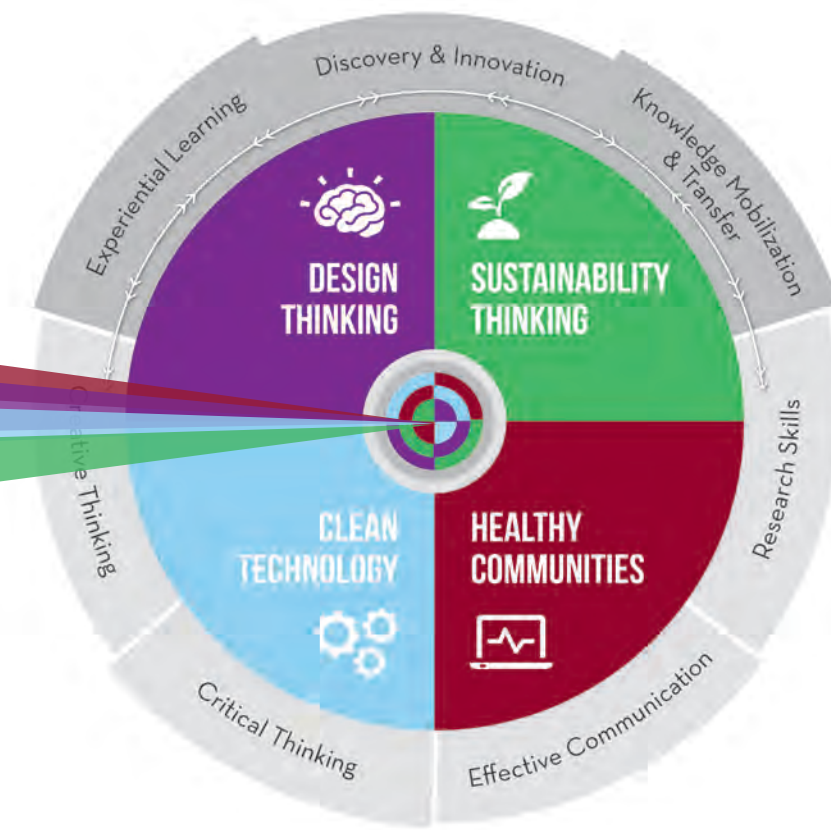


KPU CHALLENGE DIALOGUE



what

The **KPU Challenge Dialogue** is a problem-solving tool that enables students and faculty to explore solutions to real world problems and establish collaborative partnerships with industry and local government.



By addressing cleantech problems (clean energy, air, water and waste management) identified by industry or government, the **KPU Challenge Dialogue**:

- Bridges the gap between university, industry and government partners.
- Builds capacity at KPU to support partnerships and engagement with public, private and non-profit sectors.
- Examines real world challenges with particular reference to the clean technology sector.
- Enhances academic contributions to advance economic prosperity in Canada, and produces positive and inclusive outcomes for workers, employers, citizens, and consumers.
- Informs public policy and addresses industry, government and community challenges.

why



how

KPU *The* **CHALLENGE** *Team* **DIALOGUE**

**BUSINESS ENTREPRENEURIAL
LEADERSHIP**
PRODUCT DESIGN
**ENVIRONMENTAL PROTECTION
TECHNOLOGY**

This year's team will design an innovation to assist the client, the City of Surrey Engineering Department, meet an 80% waste diversion target by 2020. The team works with Executives in Residence at the Foresight Cleantech Accelerator Centre and is facilitated by KPU's Office of Research and Scholarship.



Year: 2020

Term 1

Define the scope of the challenge, the parameters of the innovation and a plan for the project.

Term 2

Collect data and begin designing and building a working prototype.

Term 3

Test and analyze the prototype and begin implementing the new application or system.



Research