

CAMPUS PLAN SUMMARY

LIST OF FIGURES

Figure 1	Stakeholder Workshop at the Richmond Campus	6
Figure 2	Mapping Activity at the Langley Campus Ideas Fair	7
Figure 3	Integrated Campus Plan	14
Figure 4	Surrey Campus Concept Plan	16
Figure 5	Surrey Campus Existing Buildings, Proposed Buildings, Building Additions	18
Figure 6	Surrey Campus Frontages, Entrances and Transparency	19
Figure 7	Surrey Campus Building Views and Landmarks	20
Figure 8	Surrey Campus Street Hierarchy	22
Figure 9	Surrey Campus Transit, Cycling and Gateways	23
Figure 10	Surrey Campus Parking	24
Figure 11	Surrey Campus Road Typologies	25
Figure 12	KPU Surrey Rd 1	26
Figure 13	KPU Surrey Rd 2	26
Figure 14	KPU Surrey Rd 3	27
Figure 15	Surrey Campus Open Space	29
Figure 16	KPU Tech Campus Concept Plan	33
Figure 17	KPU Tech Campus Existing Buildings, Proposed Buildings, Building Additions	34
Figure 18	KPU Tech Campus Frontages, Entrances and Transparency	35
Figure 19	KPU Tech Campus Building Views and Landmarks	36
Figure 20	KPU Tech Campus Street Hierarchy	38
Figure 21	KPU Tech Campus Transit, Cycling and Gateways	39
Figure 22	KPU Tech Campus Parking	40
Figure 23	KPU Tech Campus Road Typologies	41
Figure 24	KPU 56 Ave	42
Figure 25	KPU 55 Ave	42
Figure 26	KPU 53 Ave	42
Figure 27	KPU Tech Campus Open Space	44
Figure 28	Richmond Campus Concept Plan - Phase 1	48
Figure 29	Richmond Campus Concept Plan - Phase 2	49
Figure 30	Richmond Campus Existing Buildings, Proposed Buildings	51

Figure 31	Richmond Campus Frontages, Entrances and Transparency	52
Figure 32	Richmond Campus Building Views and Landmarks	53
Figure 33	Richmond Campus Street Hierarchy	55
Figure 34	Richmond Campus Transit and Cycling Circulation	56
Figure 35	Richmond Campus Parking	57
Figure 36	KPU Richmond Road Typologies	58
Figure 37	KPU Richmond St 1	59
Figure 38	KPU Richmond St 2	59
Figure 39	KPU Richmond St 3	60
Figure 40	Richmond Campus Open Space	62
Figure 41	Langley Campus Concept Plan	65
Figure 42	Langley Campus Existing Buildings, Proposed Buildings	67
Figure 43	Langley Campus Frontages and Entrances	68
Figure 44	Langley Campus Building Views and Landmarks	69
Figure 45	Langley Campus Street Hierarchy	71
Figure 46	Langley Campus Transit and Cycling Circulation	72
Figure 47	Langley Campus Frontages and Entrances	73
Figure 48	Langley Campus Road Typologies	74
Figure 49	Kwantlen Cres 1	75
Figure 50	Kwantlen Cres 2	75
Figure 51	Kwantlen Cres 3	76
Figure 52	Langley Bypass	76
Figure 53	Langley Campus Open Space	78

Planning Process

This Plan is being developed in a period of unprecedented change. The world is confronted with a pandemic, a surge of momentum towards addressing systemic injustice experienced globally, an economic downturn, global demand for actions to address climate change a commitment to the United Nations Declaration on the Rights of Indigenous Peoples and, in Canada, the Truth and Reconciliation calls to Action .

In this context, we have intentionally explored the ways in which KPU's campuses, as physical environments, can impact the climate, equality and our ability to gather. We know that KPU's campuses shape the experiences of those who study and work on them everyday. They provide moments for learning, discovery, interaction, work and play. They are destinations for their neighbours and serve their communities. As an institution that is teaching the next generation of leaders, workers and professionals, KPU's campuses can set the stage for a future of progress.

For all these reasons, this Plan adopted a design process and planning approach that centred around engagement with the KPU community to understand the needs of today and envision the goals of tomorrow. The product is a Campus Plan that intentionally explores the ways in which the campuses can uphold sustainability targets, deepen efforts towards reconciliation and improve the day-to-day experience of campus life.

To do so, the Plan takes a holistic lens. One that is centred in a unified vision for the future, is held accountable through Indigenous Principles and is guided through the Design Principles.



Engagement

WHY WE ENGAGE

As current users of the campuses, we know that KPU students, faculty members and staff offer a wealth of experience to draw from to inform strategic decision-making and design options for the future of KPU's campuses. Over the course of the campus planning process we engaged through workshops, pop-up displays, an Ideas Fair, an online survey and more.

ENGAGEMENT ACTIVITIES

INDIGENOUS PARTNERSHIP

The KPU2050 campus planning process presents an exciting and momentous opportunity to not only look ahead, but also to the history of the land. Working with Kwantlen First Nation elders, and in reflection that our campuses are located within the unceded traditional and ancestral territory of the Coast Salish peoples, we recognize the importance of listening to Indigenous voices to help guide the progress of KPU.

Throughout the planning process, ongoing meetings with KPU's Indigenous Advisory Committee (IAC) and KPU's Indigenous Student Council, along with our surrounding Indigenous communities, have been held to share stories, ideas, wisdom, and aspirations about reconciliation, teaching and learning, and the future of KPU.



Figure 2 — Stakeholder Workshop at the Richmond Campus

IDEAS FAIRS

Ideas Fairs, drop-in events, were held at the Langley, Richmond, Surrey and KPU Tech campuses. They were designed to obtain broad input and share information through a variety of interactive stations. Participants were given an engaging overview of the scope of a Campus Plan, what to expect during the KPU2050 campus planning process, background on the history of KPU and the context of each the physical campuses. Informed with background knowledge, participants were then asked to participate in a number of engaging activities to share what they value about KPU today, what they would like to see on campus in the future and their Big Ideas for 2050.



Figure 3 — Mapping Activity at the Langley Campus Ideas Fair

POP-UP DISPLAYS

Pop-up displays, staffed with members of the project and consultant teams, were positioned throughout the planning process at high-traffic areas on campus to meet people where they already were instead of relying on attendance at a scheduled event. Pop up displays were used throughout the planning process to keep the campus community updated and provide broad input on the design process.

STAKEHOLDER WORKSHOPS

Workshops provided an opportunity for internal stakeholders to dive deeper into the campus planning process. Participants split into groups that represented a mixture of faculty and staff, to gain insight into various priorities and perspectives. The workshops combined messages heard throughout the completed engagement activities to develop the founding vision and principles, design directions for each campus concept, and the overall priorities for the implementation of the Plan.

Campus Plan Vision




KPU's campuses are transformational learning environments that are landmarks within their communities. They are a connected ecosystem, responsive to their local contexts while being cohesively KPU.

They are welcoming, inclusive centres of knowledge exchange and hubs of thriving social and recreational activities. KPU's campuses are known as vibrant destinations at all times of day.

The campuses are resilient. They are adaptable to technological, social, environmental and economic change to meet the evolving needs of the University.

Throughout the course of the KPU2050 engagement process, we heard a range of comments that echo an aspiration for sustainability, inclusivity, wellbeing, vibrancy, flexibility, and connectivity on KPU's campuses. The vision and principles are meant to capture these themes to reflect a shared ambition for the Plan's creation and implementation.



**KPU'S
CAMPUSES ARE
TRANSFORMATIONAL
LEARNING
ENVIRONMENTS
THAT ARE
LANDMARKS
WITHIN THEIR
COMMUNITIES.**

Campus Plan Goals

Throughout the course of the KPU2050 engagement process, we heard a breadth of comments that echo an aspiration for sustainability, inclusivity, wellbeing, vibrancy, flexibility, and connectivity on KPU's campuses. These form the four goals that underscore the realization of the Campus Plan.

LIVING CAMPUS

We heard a call for campuses that foster amenities, services and destinations that bring vibrancy to campus life. Students, faculty and staff all want a reason to stay on campus after their school or work day comes to a close, and possibly to extend the stay on campus through the introduction of on-campus student housing.

CONNECTED

For some, this meant the ability to be connected to the events and programs offered in their neighbouring community or on other campuses. For others, this meant the ability to travel between the campuses conveniently. Noting the COVID Pandemic, this goal takes on the potential to see the KPU community be better connected digitally, through online learning and working platforms.

GREEN

Students, faculty and staff are eager for KPU to continue its efforts to be a leader in sustainability, starting from the physical campus in acknowledgment of KPU's commitment to be carbon neutral by 2050 and extending out to the many facets of the university. They also want to see green spaces on campus that can allow for biophilia, recreation or outdoor study.

RESILIENT

The KPU community wants the campuses to be resilient through an uncertain future. This was expressed through the theme of adaptable spaces and sustainable resource stewardship.

Design Principles

DISTINCTLY KPU

CELEBRATING KPU'S POLYTECHNIC
IDENTITY AND PROGRAM OFFERINGS

SELF-SUSTAINING

SUPPORTING RESPONSIBLE STEWARDSHIP
OF KPU'S FINANCIAL ASSETS AND BUILDING
OPERATIONS

INNOVATIVE PEDAGOGY

PRIORITIZING THE LEARNING EXPERIENCE
WITH ADAPTABLE AND SCALEABLE SPACES
THAT ARE RESPONSIVE TO EVOLVING
TEACHING AND LEARNING NEEDS

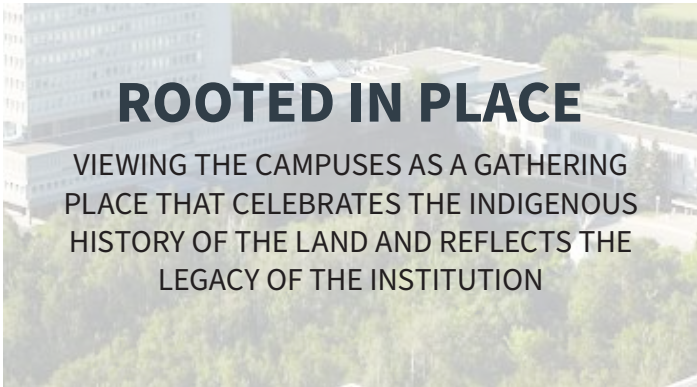
CONNECTED

CONNECTING THE CAMPUSES DIGITALLY
AND SUPPORTING IMPROVED TRANSIT
OPERATIONS

PEDESTRIAN ORIENTED

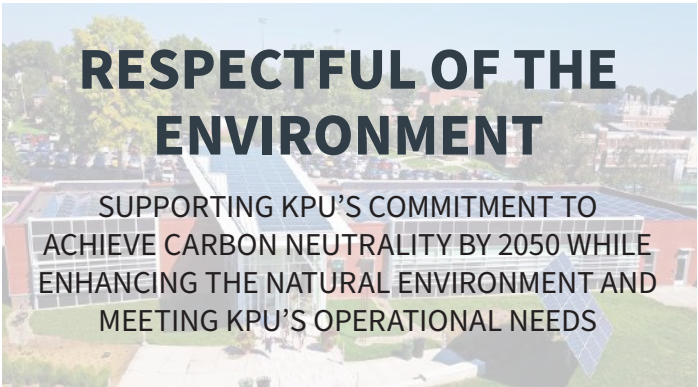
ELEVATING THE PEDESTRIAN
EXPERIENCE TO MAKE WALKING A
DELIGHTFUL, SAFE, AND PREFERRED
OPTION YEAR-ROUND

The Campus Plan Design Principles describe the fundamental lenses through which the Campus Plan vision must be realized. As the Campus Plan is implemented one must ask, “does this initiative support the design principles?”. In doing so, the design principles act as a barometer for high-level decision making.



ROOTED IN PLACE

VIEWING THE CAMPUSES AS A GATHERING PLACE THAT CELEBRATES THE INDIGENOUS HISTORY OF THE LAND AND REFLECTS THE LEGACY OF THE INSTITUTION



RESPECTFUL OF THE ENVIRONMENT

SUPPORTING KPU’S COMMITMENT TO ACHIEVE CARBON NEUTRALITY BY 2050 WHILE ENHANCING THE NATURAL ENVIRONMENT AND MEETING KPU’S OPERATIONAL NEEDS



COMMUNITY SERVING

A WELCOMING DESTINATION FOR KPU'S NEIGHBOURS, PARTNERS AND EXTERNAL COMMUNITY MEMBERS



ACCESSIBLE TO ALL

UNIVERSALLY WELCOMING, INCLUSIVE AND ACCESSIBLE



Campus Plan Frameworks

INTEGRATED CAMPUS PLAN

The Frameworks work alongside the Vision and Principles and Phasing and Implementation to form an integrated Campus Plan. The Frameworks detail the recommendations of the Concept Plans through the themes of sustainability built form, open space and movement. The recommendations will provide guidance for future development as the Campus Plan is implemented.

BUILT FORM

The Built Form Frameworks visualize the full build-out of the campuses over a 30-year horizon. They identify proposed building sites and building expansion areas with the goal of facilitating a harmonious relationship between open spaces, circulation routes and new buildings.

Presently, the campuses reflect an auto-centric development pattern, with large swathes of surface parking hindering the public realm. The Built Form Frameworks aim to bring vibrancy to the public realm by framing new and existing open spaces with active uses (social spaces, food outlets, convenience shops, etc.) within new buildings. To make this possible, parking is consolidated into structured or below-grade parking as part of new development on each campus.

OPEN SPACE

Open spaces characterize campus settings. Increasingly, students are choosing their institution based on the quality of the public realm as an indicator of the quality of campus life.

The Open Space Frameworks describe a continuous landscape network of unique open spaces that comprise the public realm. The spaces create a series of campus hearts, areas with energy and activity, within the campuses. The recommendations included in the Frameworks aim to achieve a seamless relationship between buildings and open spaces which work together to create an attractive and high-functioning environment for the university.

MOVEMENT

The Movement Frameworks support the evolution of KPU's campuses in becoming accessible, multi-modal environments. They foster connectivity with the surrounding community to create an accessible environment for all. A clear hierarchy and function for streets is presented in the Movement Frameworks with these objectives in mind.

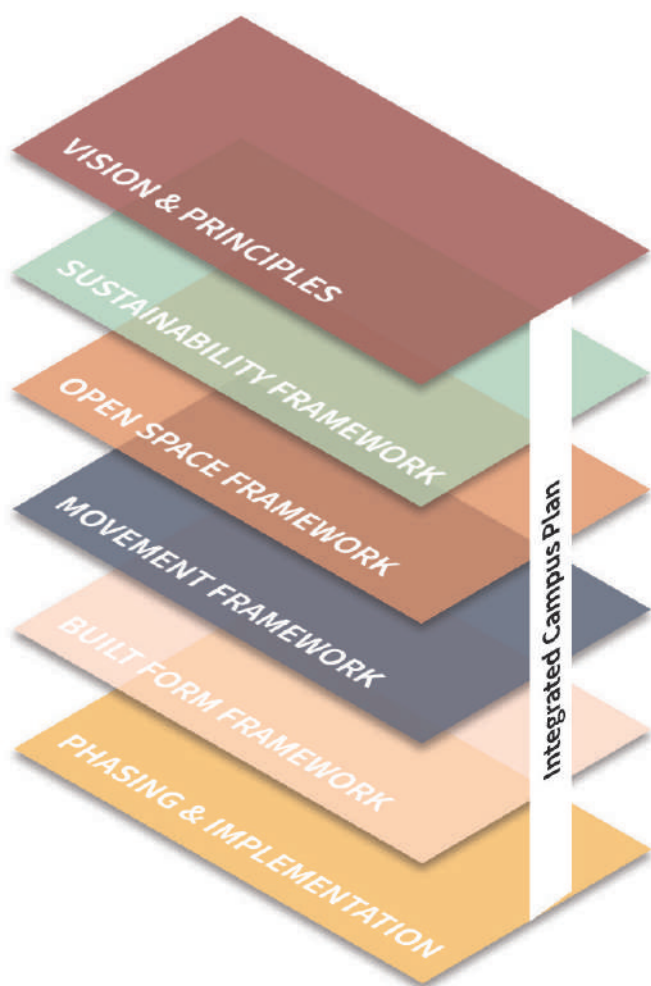


Figure 4 — Integrated Campus Plan

SUSTAINABILITY

The Sustainability Framework provides recommendations for the physical campuses, operations, governance and academics to support a vision of carbon neutrality by 2050 and a ubiquitous presence of sustainability across KPU's campuses.

USING THE FRAMEWORKS

Within the Campus Plan, the frameworks are presented alongside the Concept Plan for each campus. The frameworks are further delineated to describe:

- + Proposed buildings and building additions
- + Landmarks and views
- + Frontages and entrances
- + Parking
- + Street hierarchy
- + Vehicular circulation
- + Transit and cycling circulation
- + Significant open spaces

Recommendations are included for each subsidiary of the Campus Plan Frameworks that are unique to the conditions of the respective campus.

Surrey Concept Plan

The Surrey Concept Plan is structured around two north-south and east-west axis. These form the primary movement corridors and link all campus buildings with new and enhanced open spaces. The campus' relationship with the neighbourhood also changes. Buildings frame the edges of the campus, thereby creating a welcoming face to the community and affirming KPU's presence.

The Concept Plan aims to achieve the following goals:

- + Form a network of open spaces linked by delightful pedestrian routes
- + Introduce a new series of campus hearts
- + Enhance existing open spaces with new landscape treatment and programmatic uses
- + Provide opportunities for amenity spaces that connect to the neighbouring community in new buildings fronting 126 St, 128 St and 72 Ave
- + Create a bold showcase of KPU's identity in new development along the campus edge
- + Embolden the campus gateway on 72 Ave
- + Reorganize parking in structured or below-grade forms

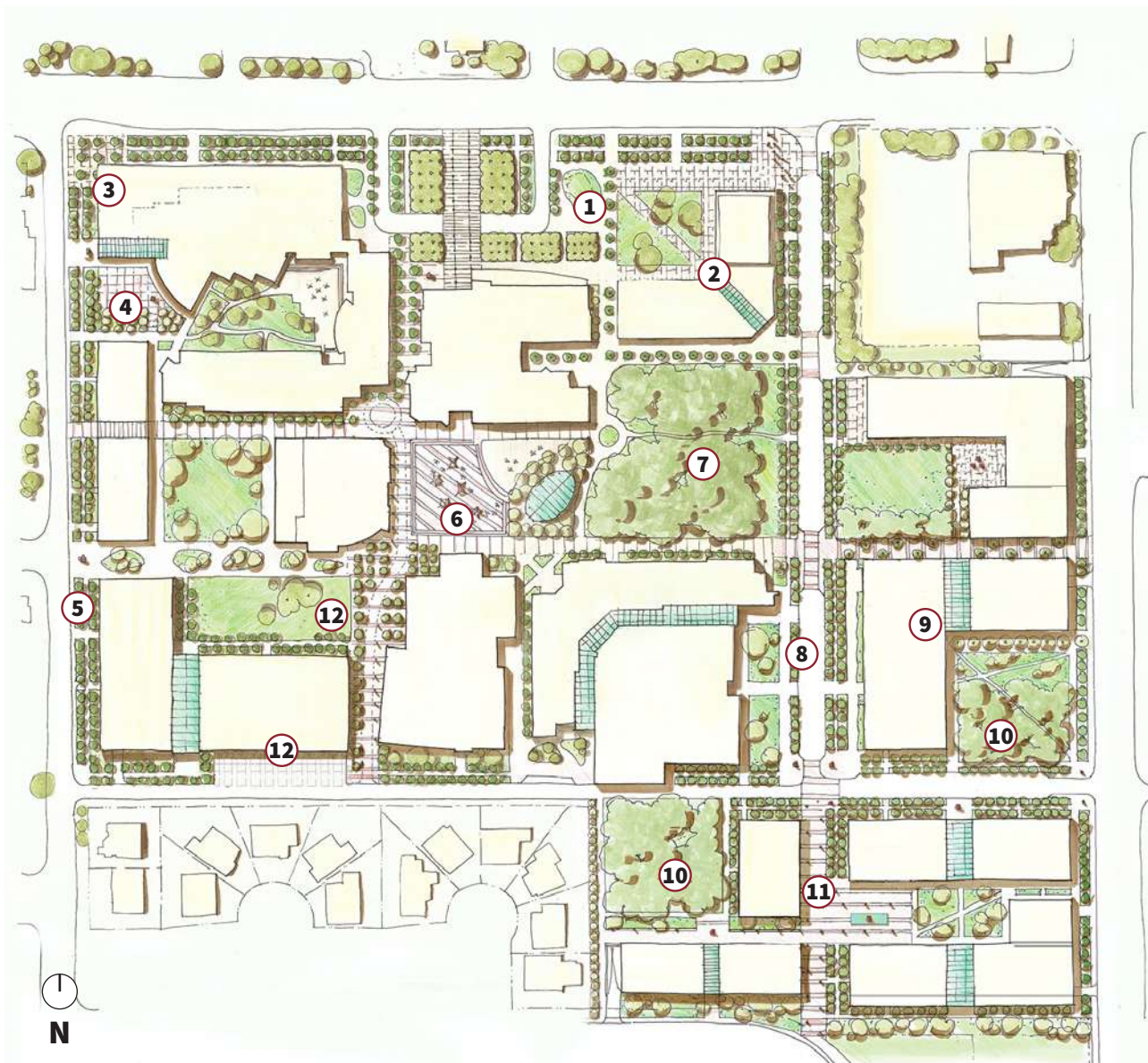


Figure 5 — Surrey Campus Concept Plan

- | | |
|--|--|
| <ul style="list-style-type: none"> ① Redesigned entry and plaza ② Opportunity for an iconic building that can be used for revenue generation ③ A new gateway presence on the corner ④ Refreshed Grassroots patio and plaza area ⑤ Enhanced streetscape and pedestrian gateways ⑥ East-west campus spine connects campus hearts ⑦ Retained campus forest with improved pedestrian trails | <ul style="list-style-type: none"> ⑧ New campus street for vehicular circulation ⑨ New redevelopment opportunity for industry, research and/or academic programming ⑩ Significant trees conserved and integrated into campus development ⑪ New campus “neighbourhood” with potential for student housing ⑫ KSA Hub Building opportunity ⑬ Relocated shipping, receiving and facilities storage |
|--|--|

Built Form



Figure 6 — Surrey Campus Existing Buildings, Proposed Buildings, Building Additions

LEGEND

	Existing
	Proposed Buildings
	Building Additions

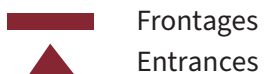
PROPOSED BUILDINGS AND BUILDING ADDITIONS

The campus follows a grid development pattern that is defined by two north-south, and one east-west pedestrian link, as well as two campus streets. These structural elements dictate the orientation and placement of buildings. Most new buildings are sited in present-day surface parking lots to preserve green space and prioritize a compact development form. Depicted building additions should be taken as part of an overall renovation of the existing space.



Figure 7 — Surrey Campus Frontages, Entrances and Transparency

LEGEND



FRONTAGES ENTRANCES AND TRANSPARENCY

Building frontages play a critical role in defining the campus identity and experience. They are an element of wayfinding, safety, and overall campus animation by defining entrances and providing eyes on the public realm. All buildings provide frontages on streetscapes and open spaces. On the Surrey campus, it is particularly important to provide building entrances and active ground floor uses along the three cardinal pedestrian links to promote vibrancy in the public realm.



Figure 8 — Surrey Campus Building Views and Landmarks

LEGEND

- Landmark Building
- Art
- View Corridor

BUILDING VIEWS AND LANDMARKS

Building views and landmarks create a shorthand for the campus' identity. Views and landmarks work together to create links between campus spaces for intuitive navigation. Landmark buildings should be positioned at the intersection of 72 Ave and 126 St and 72 Ave and the Campus Street to signal arrival to the campus. Art features should be integrated throughout the campus at the end of view termini and at the entrances of buildings to aid in wayfinding while beautifying the public realm.

Movement

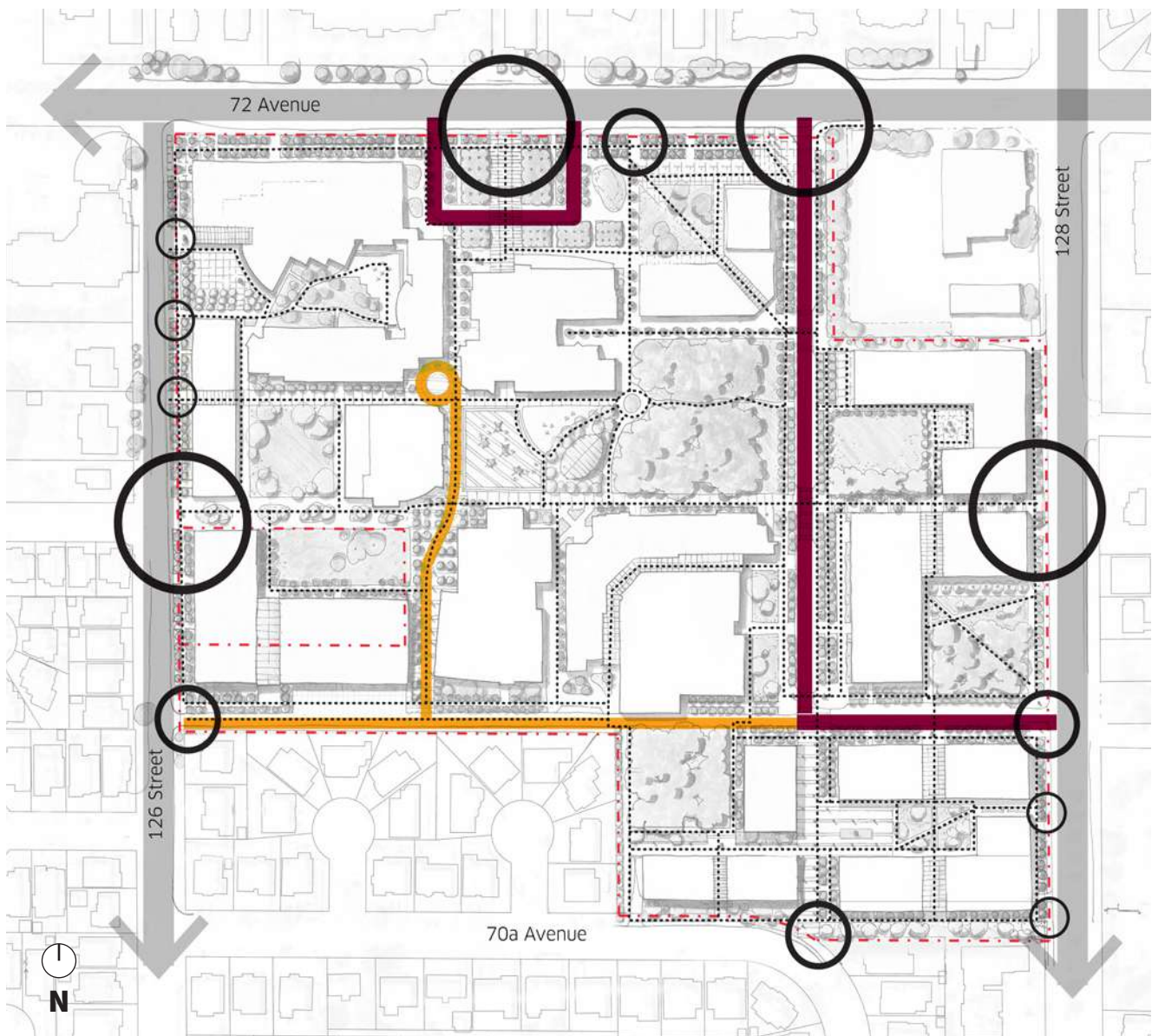


Figure 9 — Surrey Campus Street Hierarchy

LEGEND

- City Road
- Primary Campus Street
- Service Lane
- Pedestrian Links
- Primary Gateway
- Secondary Gateway
- Pedestrian Gateway

STREET HIERARCHY

The campus prioritizes the pedestrian by allowing minimal vehicular circulation. Vehicles can circulate through the campus by way of the primary Campus Street and Service Lane. Drop offs are accommodated in the loop at the entrance off of 72 Ave.

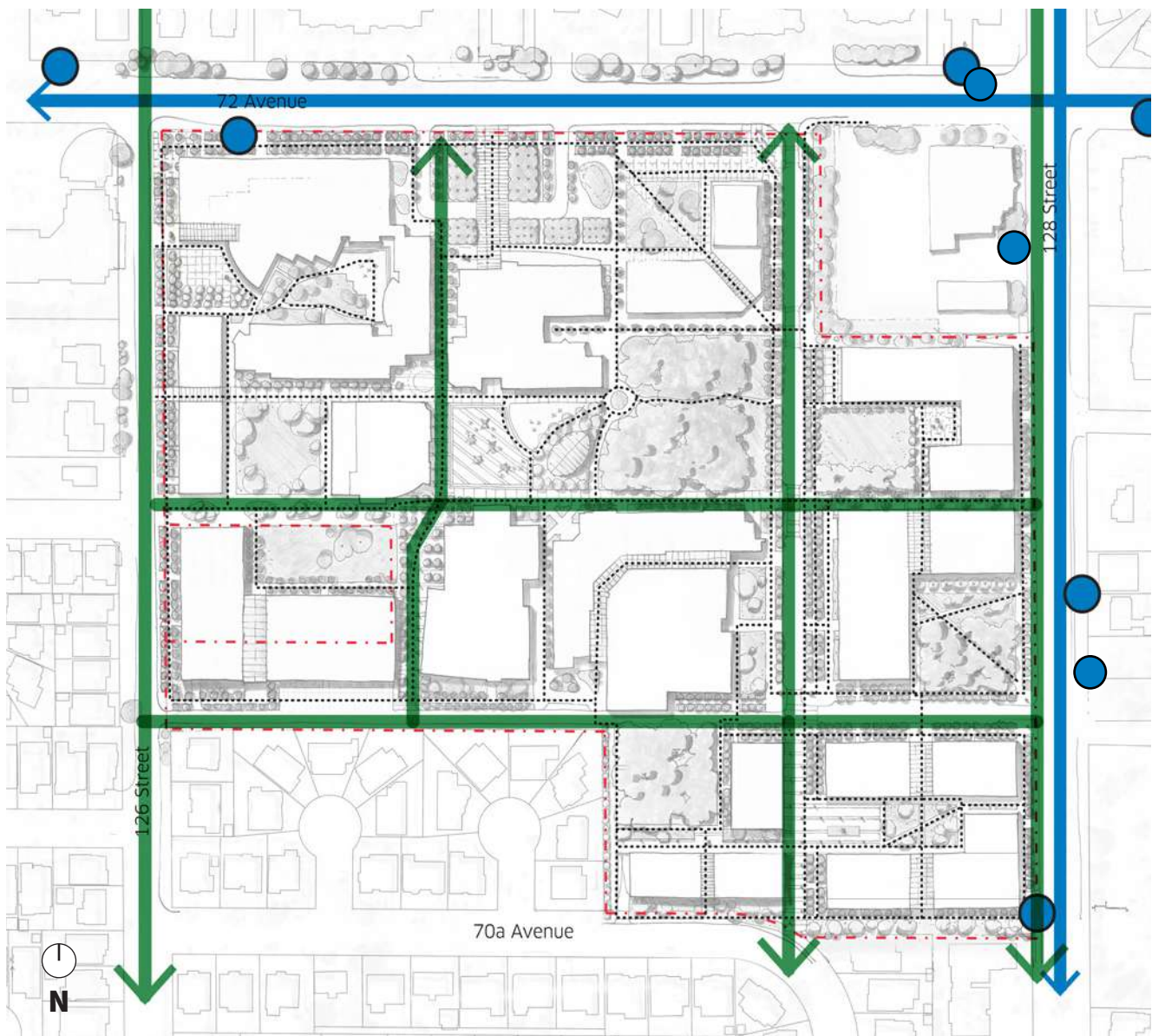








Figure 10 — Surrey Campus Transit, Cycling and Gateways

LEGEND

-  Transit Route & Transit Stop
-  Cycling
-  Pedestrian Links
-  Primary Gateway
-  Secondary Gateway
-  Pedestrian Gateway

TRANSIT AND CYCLING CIRCULATION

Transit runs on 72 Ave and 128 St. The Plan fosters improved pedestrian connections to these bus stops. Cycling is permitted on the main cardinal axes of the campus.

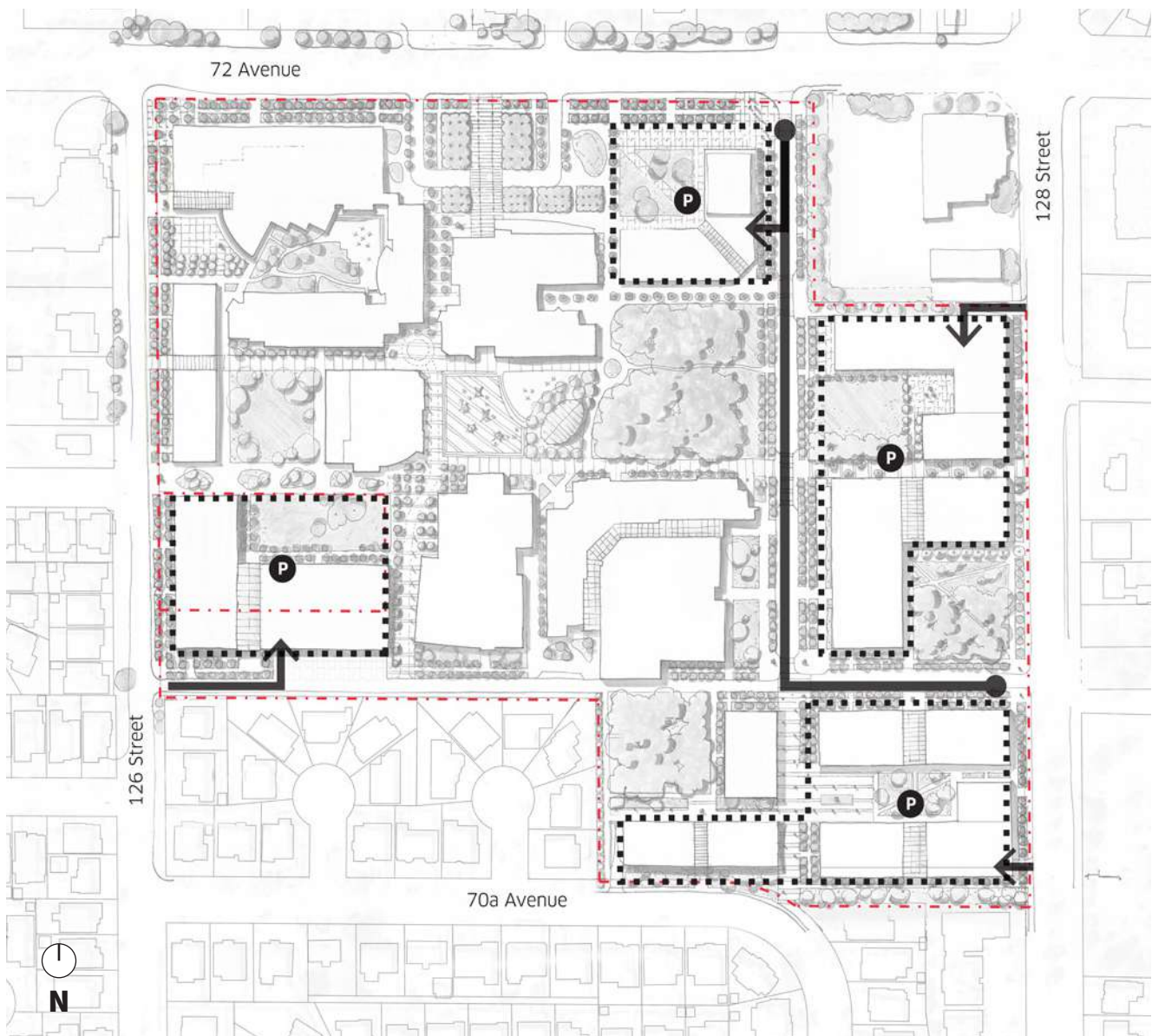


Figure 11 — Surrey Campus Parking

LEGEND

- On-Street Parking
- Below-Grade Parking

PARKING

The Plan limits surface parking and locates new parking below grade.

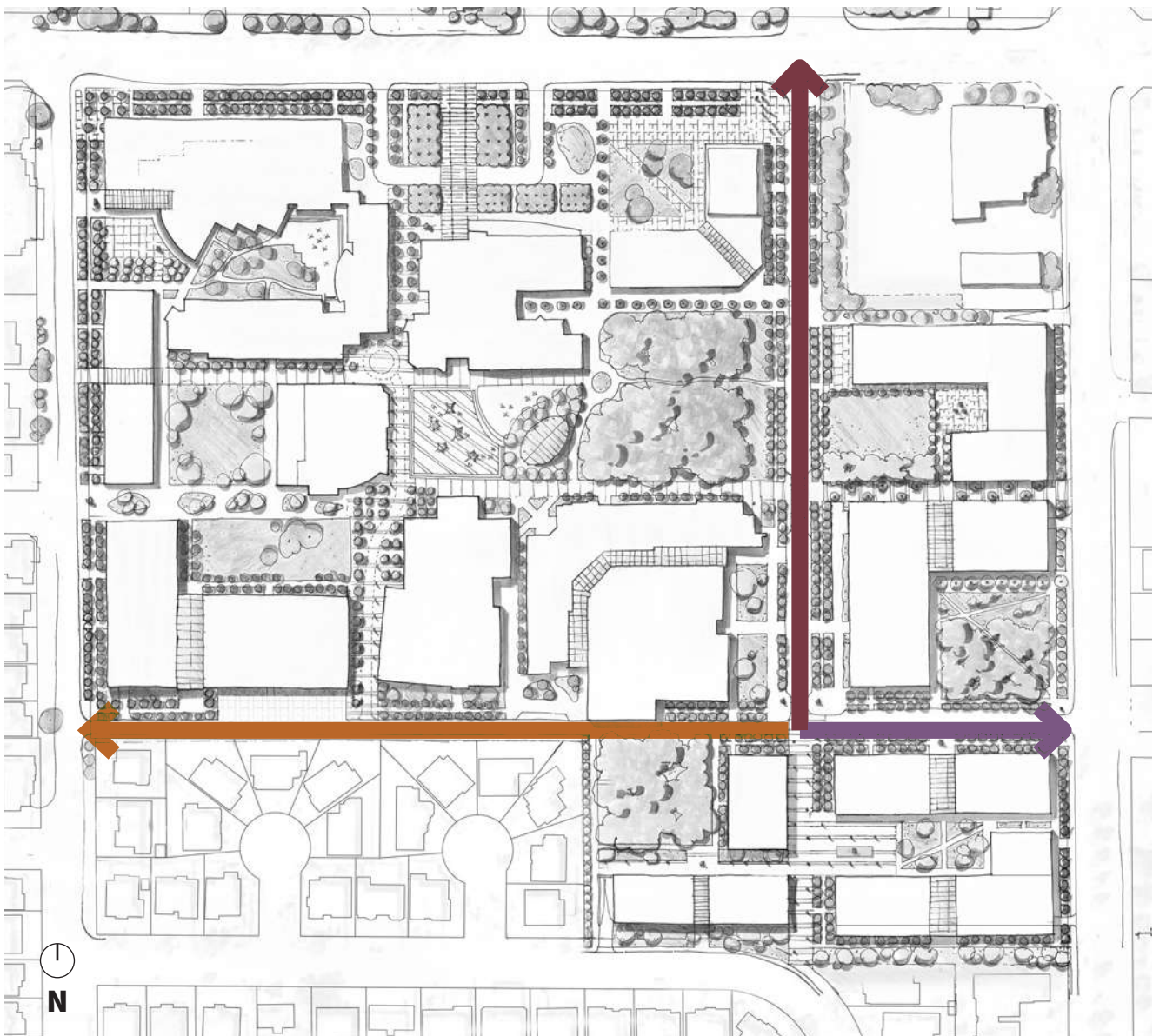





Figure 12 — Surrey Campus Road Typologies

ROAD TYPOLOGIES

	KPU Surrey Rd 1	R.O.W 23.4m
	KPU Surrey Rd 2	R.O.W 20.0m
	KPU Surrey Rd 3	R.O.W 16.0m

ROAD SECTIONS

The following road sections identify typical conditions for the three proposed campus streets.

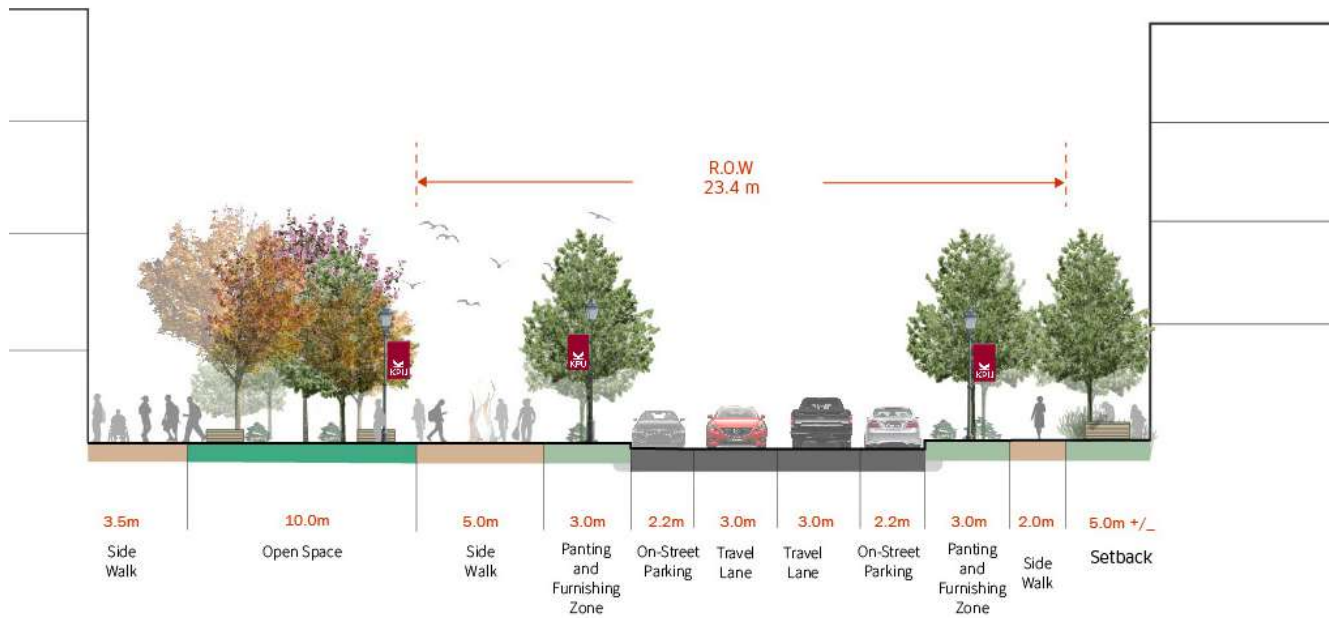


Figure 14 — KPU Surrey Rd 1

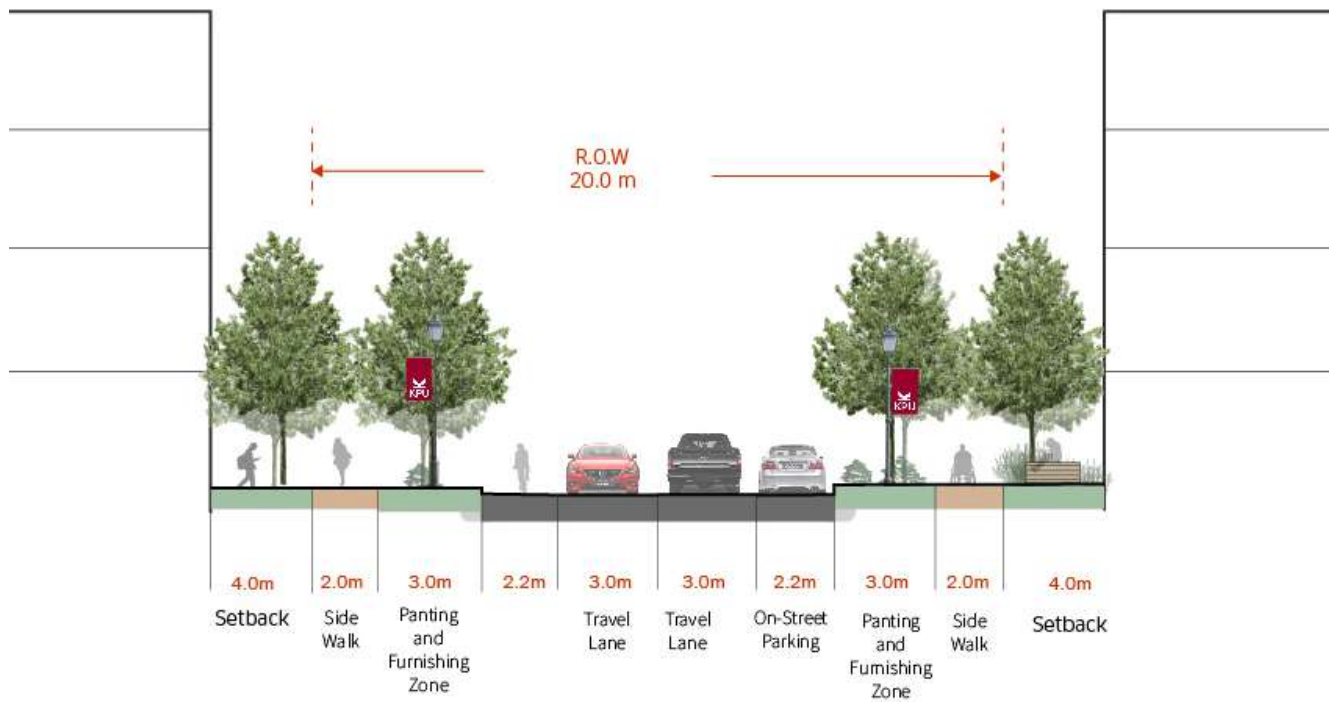


Figure 13 — KPU Surrey Rd 2

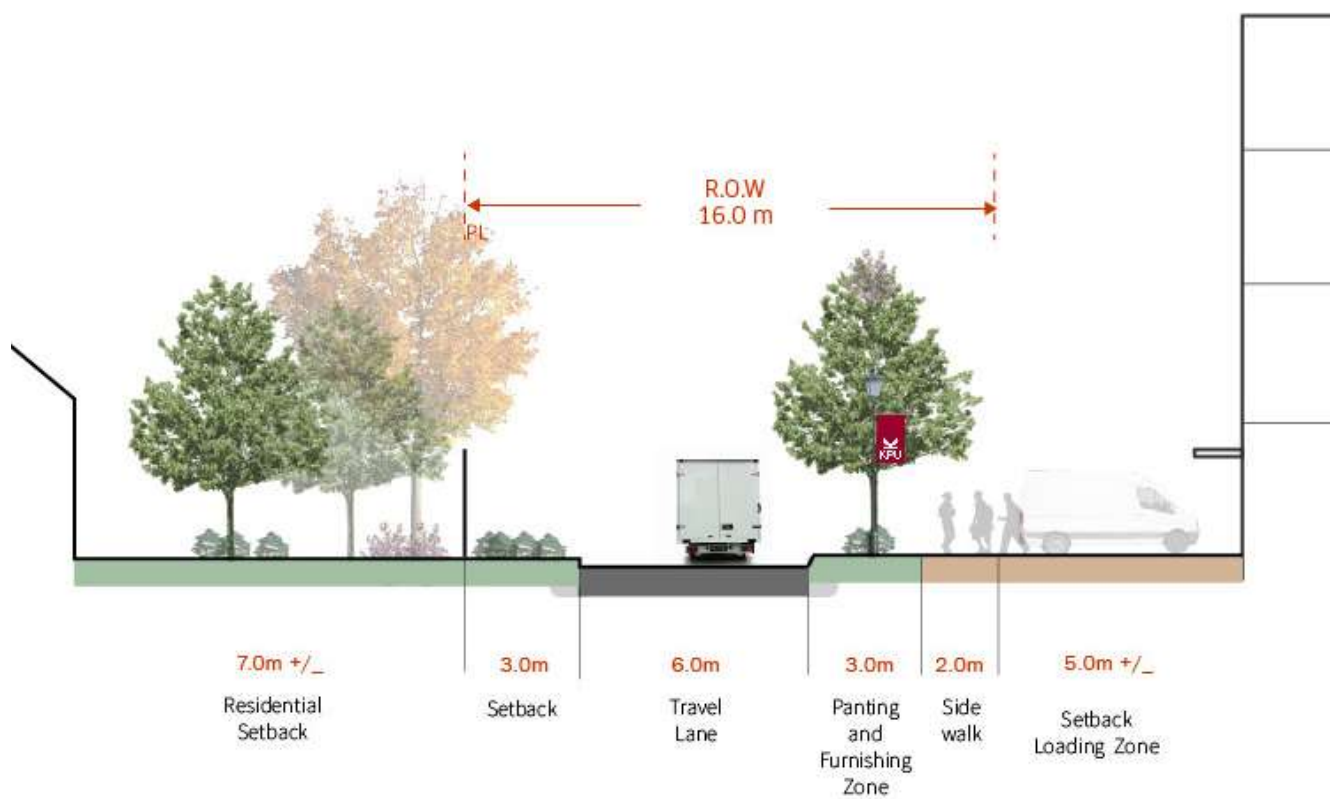


Figure 15 — KPU Surrey Rd 3

Open Space



Figure 16 — Surrey Campus Open Space

LEGEND

- Forest
- Formal Plazas
- Commons
- Courtyards
- Pedestrian Links
- Gardens
- Streetscapes
- Edge Landscapes
- Indigenous Spaces (TBD)

OPEN SPACE

The Open Space Framework provides recommendations for all open space types with special consideration given to the ceremonial entry plaza off of 72nd Ave, the character of the primary pedestrian links and the new campus streetscape.



CAMPUS SPINE

The campus spine is the primary east-west pedestrian linkage. It connects most of the campus' significant open spaces and academic buildings. It is framed by beautiful plantings, places to sit and campus wayfinding elements such as banner signage.



ENTRY PLAZA

The Campus Master Plan proposes a redesign of the northern drop-off area and surface parking lots to create a pedestrian-oriented, vibrant front-door to the campus. The ceremonial plaza forms a bold face to the surrounding community and is the main point-of-entry for new arrivals. It can be a place to host ceremony, take graduation photos or stage community-focused events like farmers markets and fairs.



NATURAL AREAS

The Concept Plan conserves the campus' most significant trees in protected forest stands. The priority for these areas is to maintain safe pedestrian circulation, welcome opportunities for learning and cross-cultural exchange and to support areas for nature observation and contemplation.



KPU Tech

KPU Tech Concept Plan

The KPU Tech Concept Plan locates new development towards 56 Ave, 180 St and 55 Ave to make the campus a recognizable landmark within the Cloverdale Town Centre. In this configuration 55th Ave becomes the main link of the campus, rather than continuing its current state as a secondary road. The campus forms a new relationship with 55th Ave, providing a sequence of new amenities and open spaces along the streetscape.

Moreover, the Concept Plan is responsive to existing and future context. Reflecting the new Surrey hospital and cancer centre planned to the south, the Plan orients new frontages, open spaces and future amenity spaces adjacent to the site. Reflecting the residential neighbourhood to the north, the Plan proposes improved pedestrian connections through Shannon Hill Park. Lastly, the Concept Plan earmarks space for future industry partnerships in the southeast.

The Concept Plan aims to achieve the following goals:

- + Inform about the teaching and learning on campus through showcase spaces
- + Inspire future learners and industry practice through a leading-edge teaching environment
- + Evoke a sense of inquiry through viewing the whole campus as an active workspace
- + Create outdoor spaces for recreation
- + Welcome partnerships with industry for the application of students' practical knowledge in innovative practices
- + Form a new series of campus of hearts with the sequence of open spaces along 55th Ave

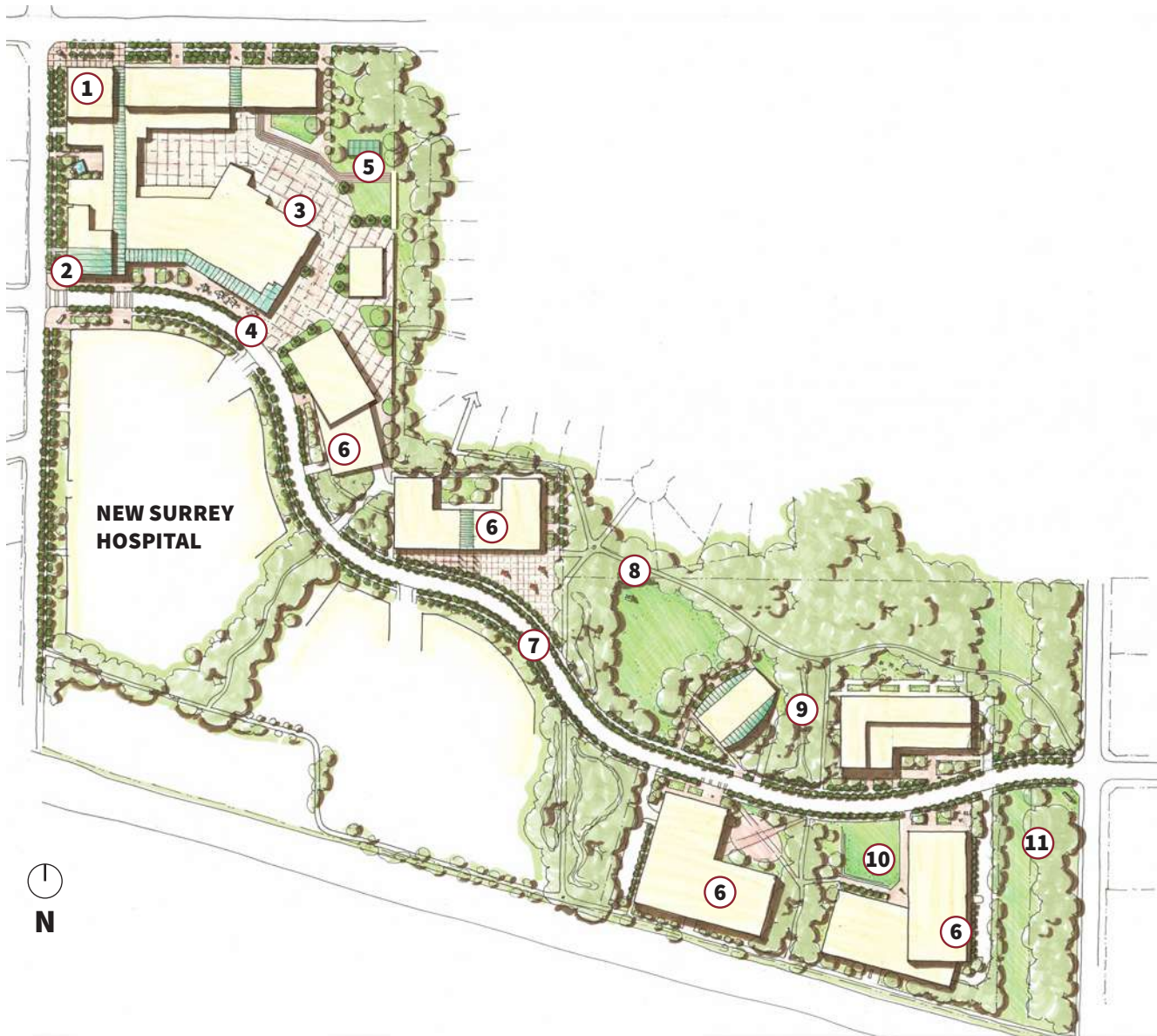


Figure 17 — KPU Tech Campus Concept Plan

- | | |
|--|---|
| <p>① Entrance is repositioned towards the street</p> <p>② New entry plaza and weather protected entry at the southern entry</p> <p>③ Loading area reconfigured for a makerspace showcase plaza</p> <p>④ Enhanced streetscape fronting the new hospital development</p> <p>⑤ Pavilion and outdoor amphitheatre seating for connecting to 56 Ave</p> <p>⑥ New redevelopment opportunity for industry, research and/or academic programming</p> | <p>⑦ Improved streetscape with street trees and sidewalk along 55 Ave</p> <p>⑧ Network of trails connecting the campus with Shannon Hill Park</p> <p>⑨ Protected riparian areas</p> <p>⑩ New open spaces to create a sequence of campus hearts</p> <p>⑪ Buffered edge along 184th Ave</p> |
|--|---|



Figure 18 — KPU Tech Campus Existing Buildings, Proposed Buildings, Building Additions

LEGEND

- Existing
- Proposed Buildings
- Building Additions

PROPOSED BUILDINGS AND BUILDING ADDITIONS

55 Ave forms the backbone for new development. New buildings frame the street, creating a vibrant, pedestrian-oriented streetscape. Existing buildings are expanded to create a frontage on 56 Ave and 180 St thereby improving KPU's visibility in Cloverdale Town Centre.



Figure 19 — KPU Tech Campus Frontages, Entrances and Transparency

LEGEND

- Frontages
- Entrances

FRONTAGES ENTRANCES AND TRANSPARENCY

The Plan positions all buildings to provide frontages on streetscapes and open spaces to avoid back-of-house conditions. The frontages along 56 Ave and facing the future hospital are critically important for expressing KPU's presence and identity.

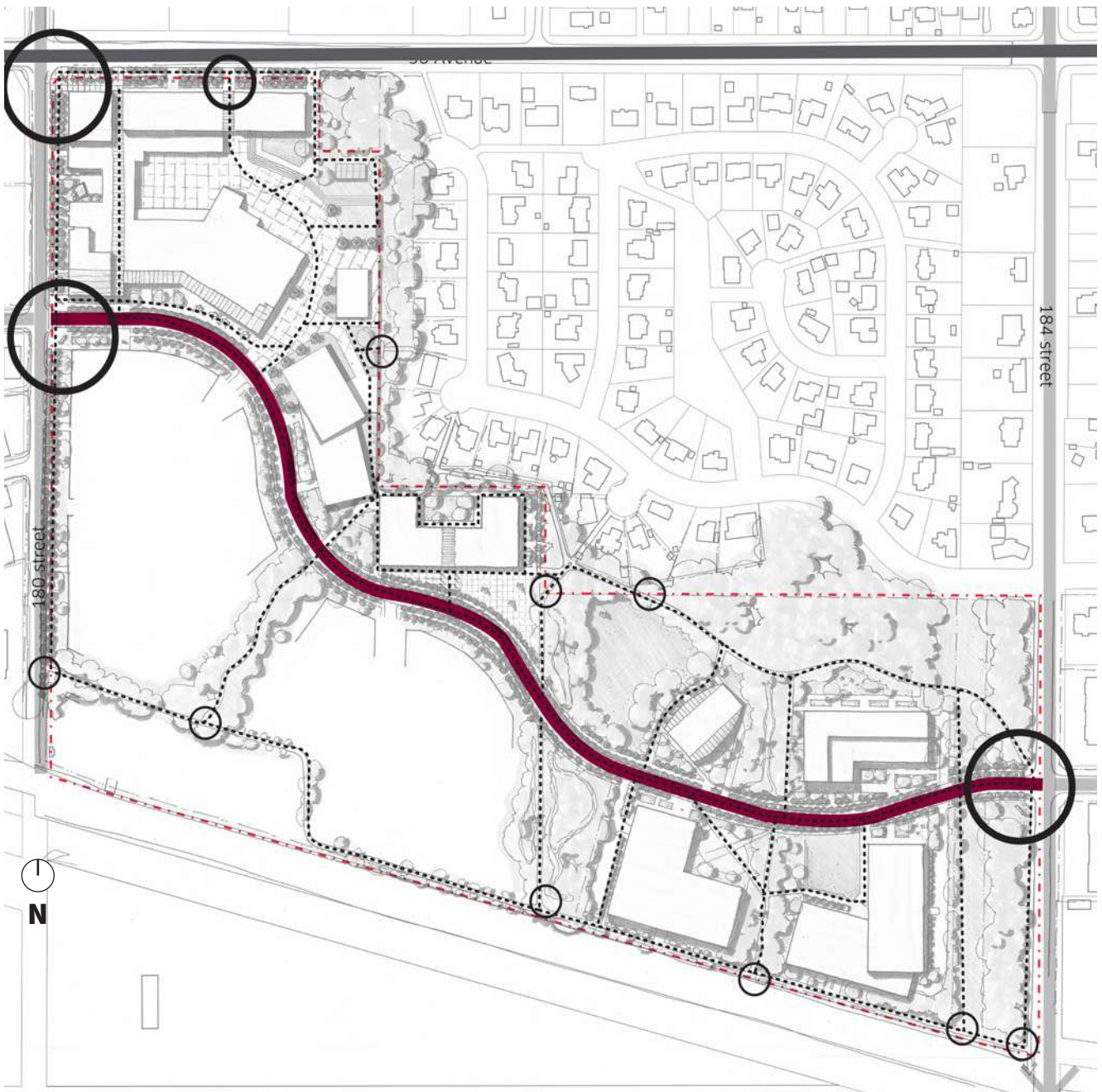


Figure 20 — KPU Tech Campus Building Views and Landmarks

LEGEND

- Landmark Building
- Art
- View Corridor

BUILDING VIEWS AND LANDMARKS

Views and landmarks work together to create links between campus spaces for intuitive navigation. Landmarks may include pronounced architecture, landscape design, public art, significant trees and even outdoor furniture. Landmark buildings should be located along 56 Ave, facing the future hospital site and at the terminus of view corridors.

Movement

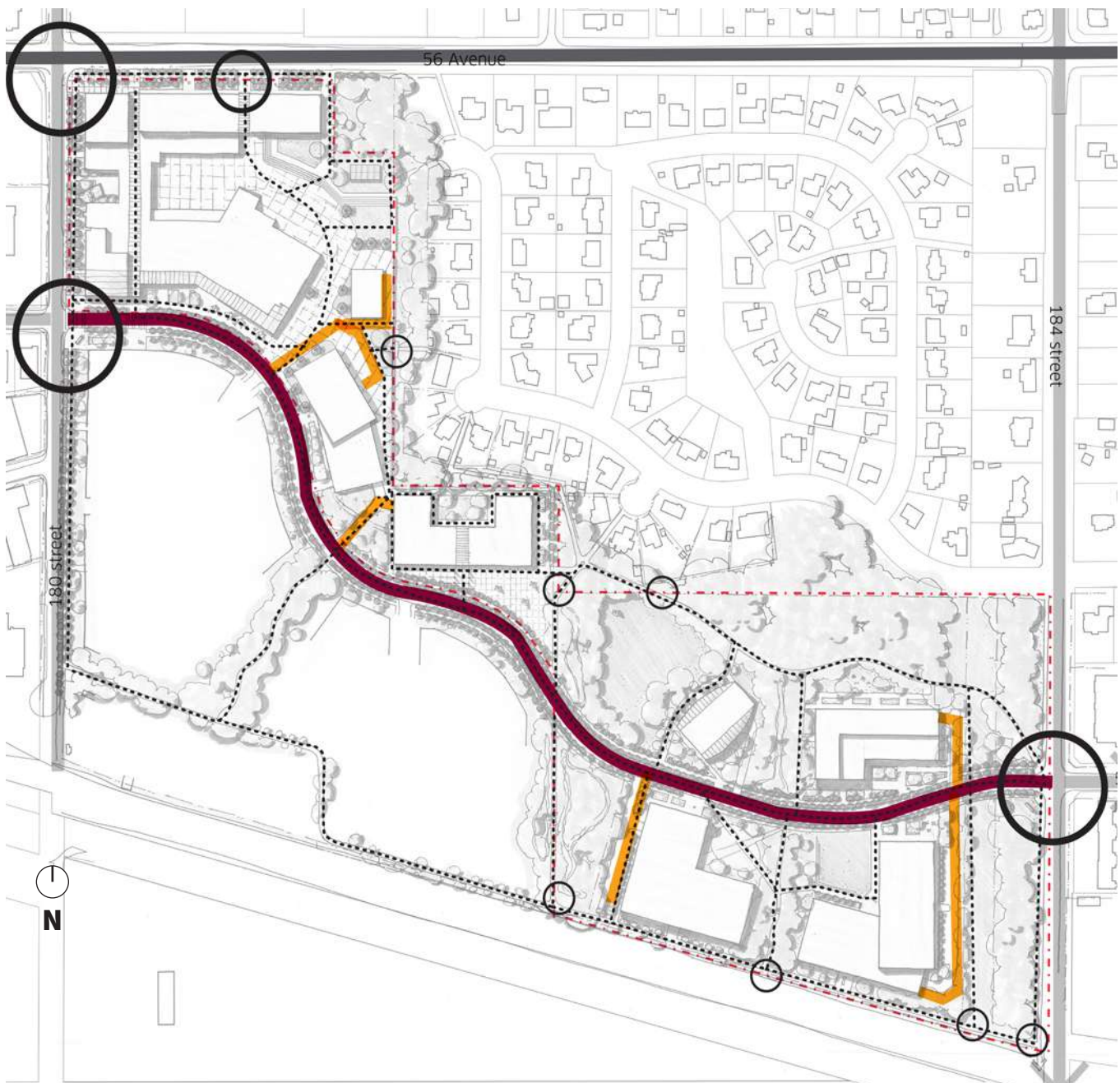


Figure 21 — KPU Tech Campus Street Hierarchy

LEGEND

- Provincial Highway
- City Road
- Primary Campus Road
- Service Road
- Pedestrian Links
- Primary Gateway
- Secondary Gateway
- Pedestrian Gateway

STREET HIERARCHY

55 Ave will function as the primary campus road, providing access to all campus buildings.

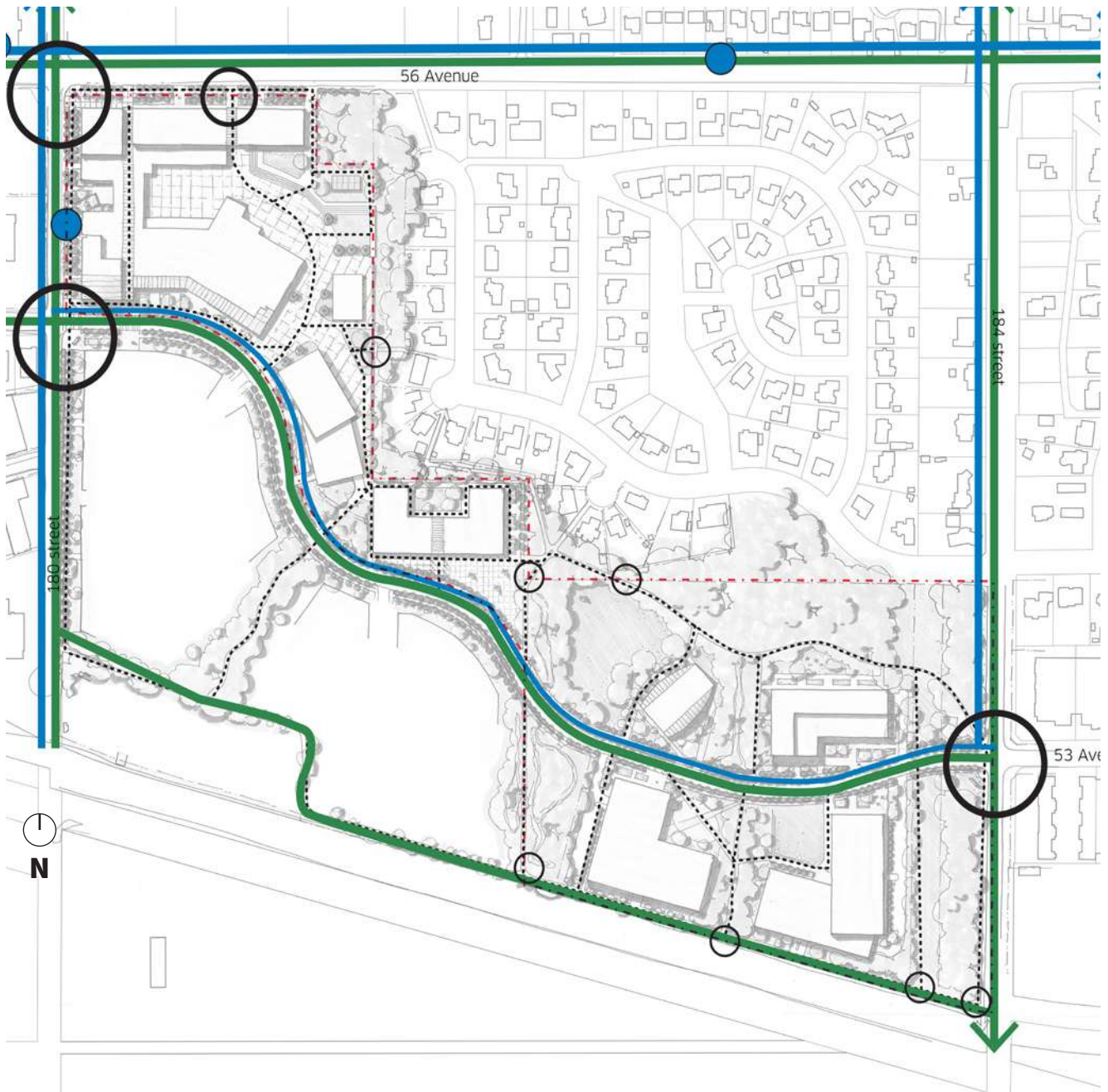


Figure 22 — KPU Tech Campus Transit, Cycling and Gateways

LEGEND

- Transit Route & Transit Stop
- Cycling
- Pedestrian Links
- Primary Gateway
- Secondary Gateway
- Pedestrian Gateway

TRANSIT AND CYCLING CIRCULATION

The Plan proposes additional transit circulation along 55 Ave to serve the future hospital development and the southeast campus buildings as well as cycling circulation to complete the network proposed in the Cloverdale Town Centre Area Plan.

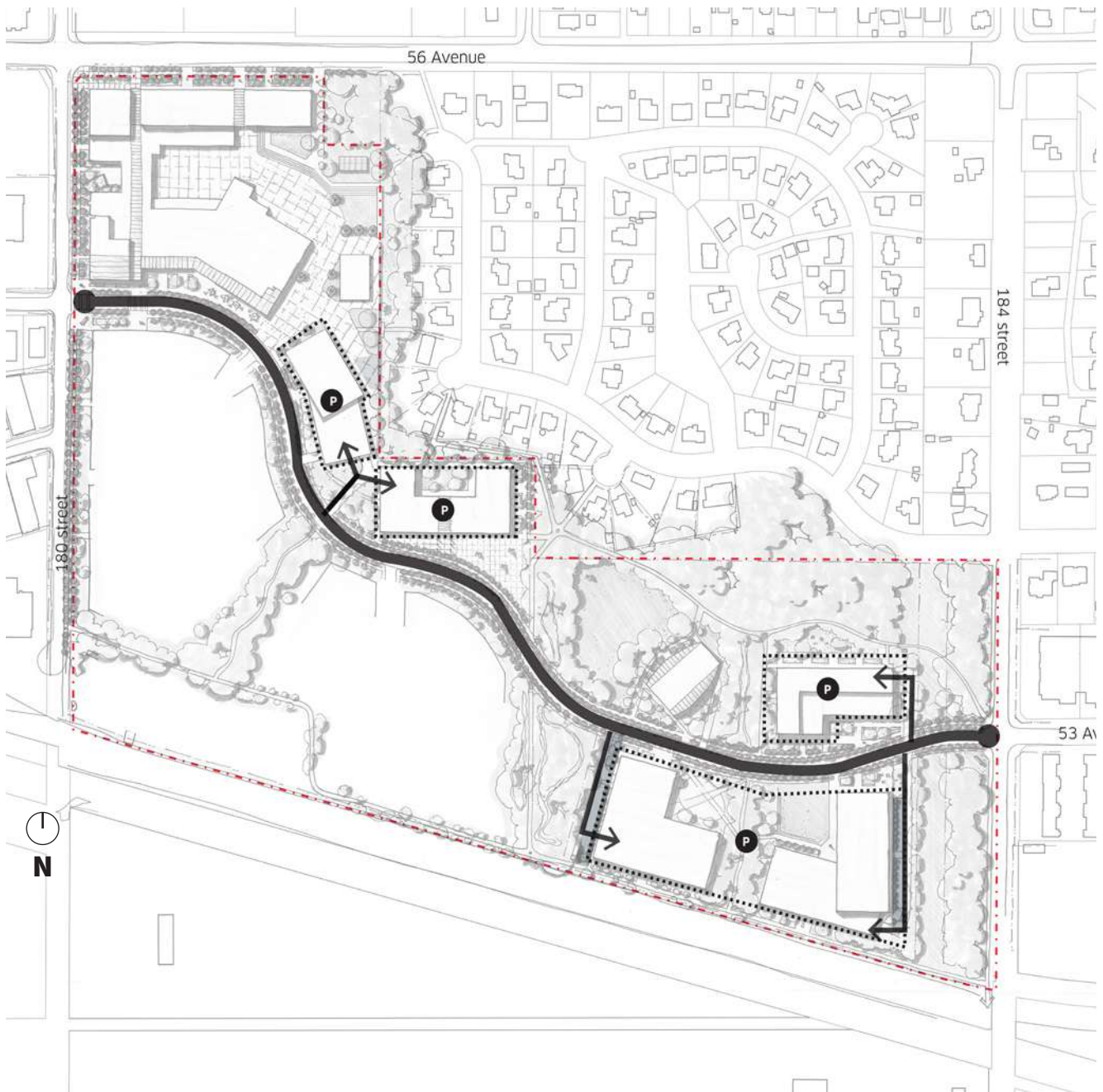


Figure 23 — KPU Tech Campus Parking

LEGEND

- On-Street Parking
- Below-Grade Parking

PARKING

The Plan limits surface parking and locates new parking below grade.

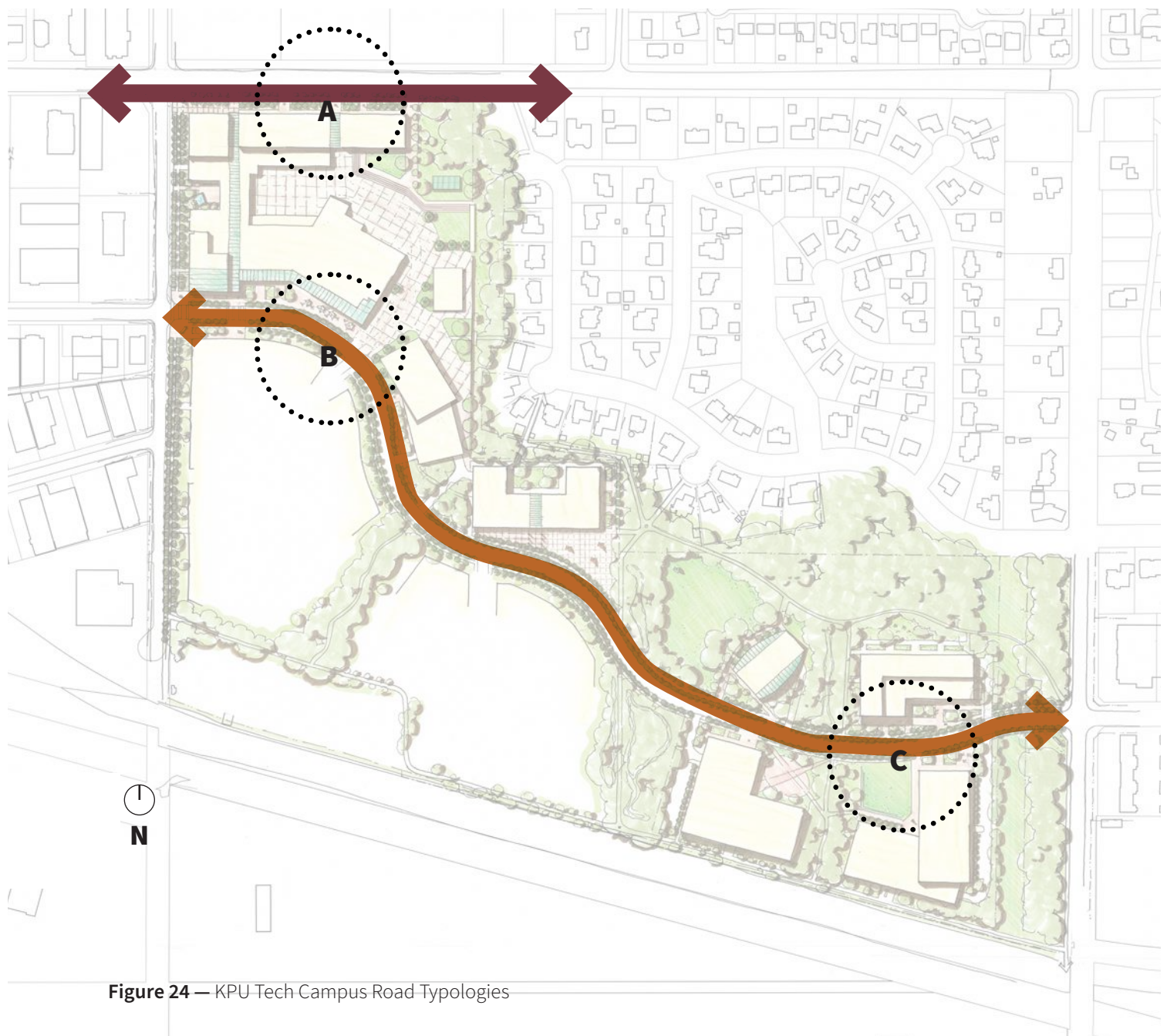





Figure 24 — KPU Tech Campus Road Typologies

ROAD TYPOLOGIES

	KPU 56 Ave (A)	R.O.W 20.4m
	KPU 55 Ave (B)	R.O.W 16.0m
	KPU 53 Ave (C)	R.O.W 17.4M

ROAD SECTIONS

The following road sections identify proposed typical conditions for local streets. Recognizing that these are Municipally and Provincially owned roads, note that these are proposed conditions in accordance to the Cloverdale Town Centre Area Plan and general urban design best practices.

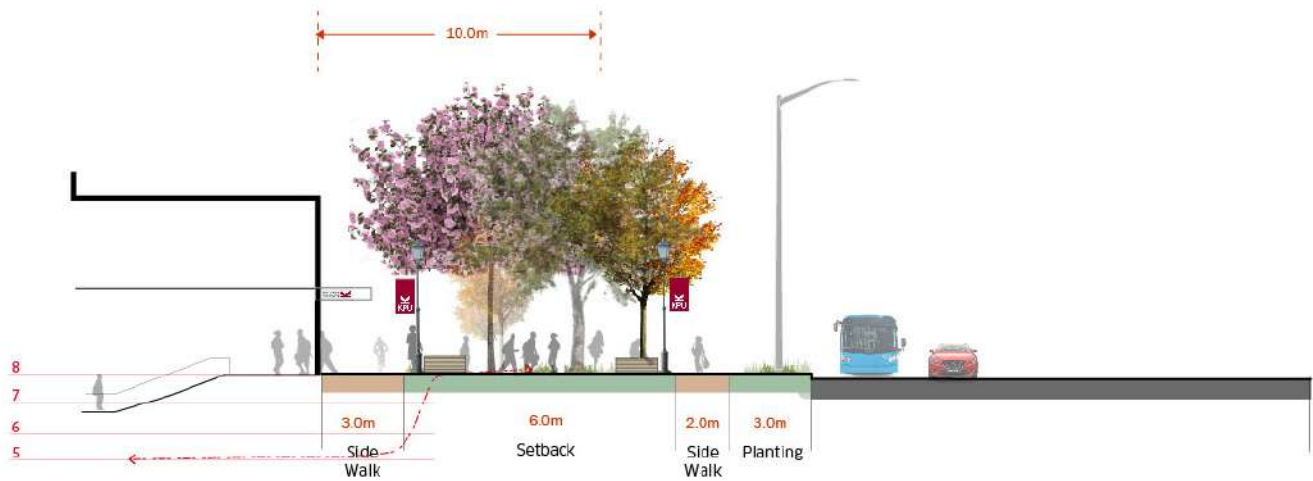


Figure 25 — KPU 56 Ave

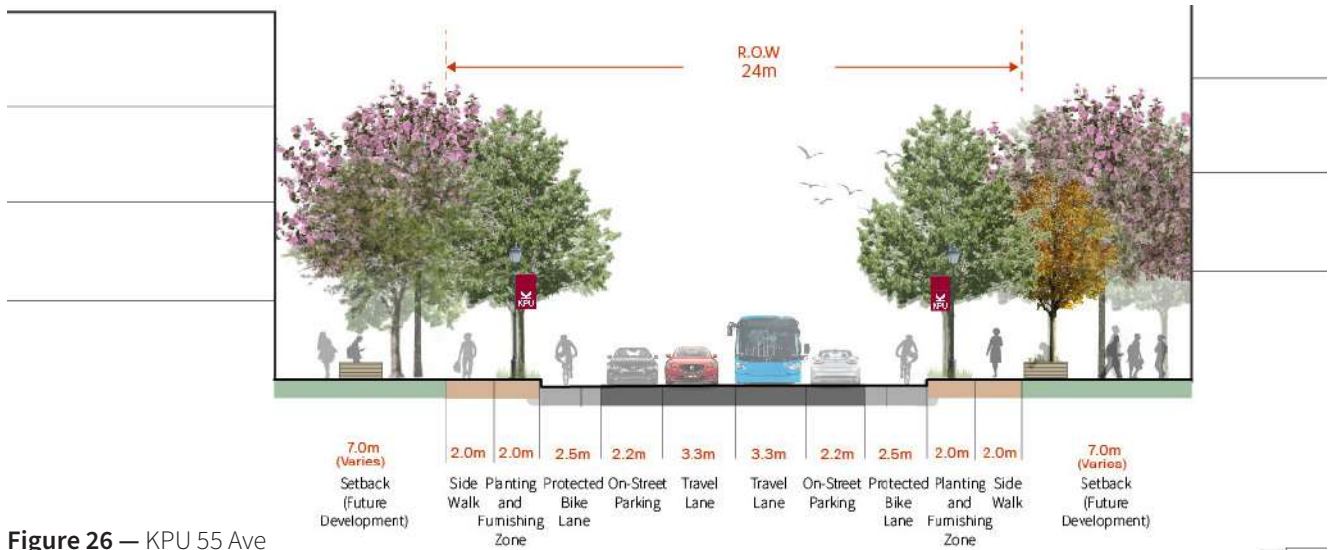


Figure 26 — KPU 55 Ave

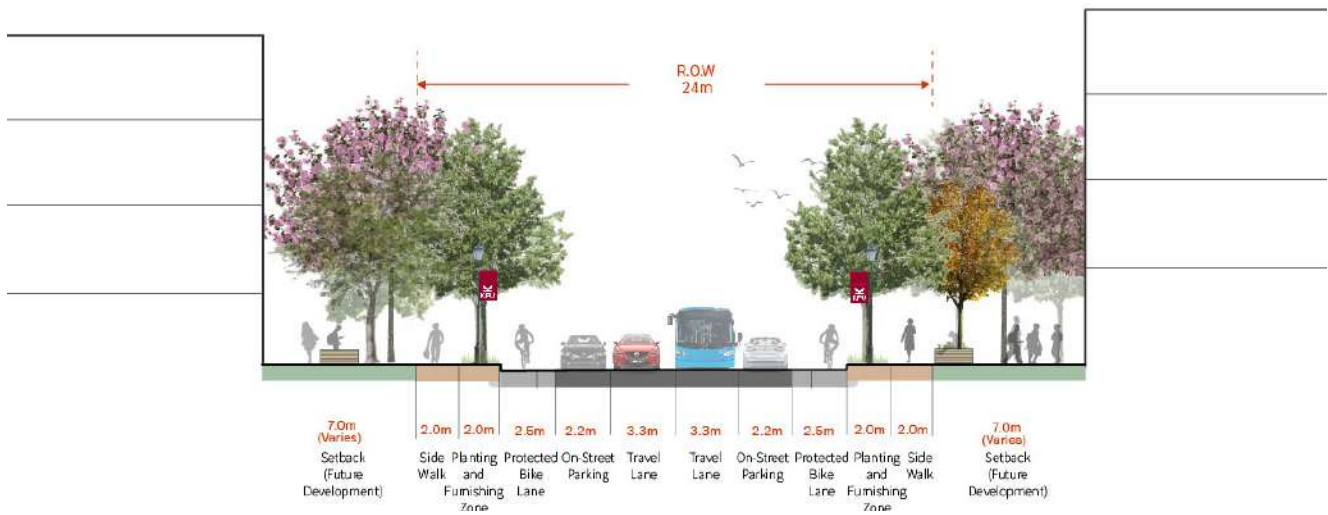


Figure 27 — KPU 53 Ave

Open Space



Figure 28 — KPU Tech Campus Open Space

LEGEND

- Naturalized Landscape
- Plazas
- Courtyards
- Park
- Streetscapes
- Edge Landscapes

OPEN SPACE

The Open Space Framework provides recommendations for all open space types with special consideration given to the makerspace plaza framed by the existing building, the streetscape along 55 Ave and the entry plaza off of 56 Ave.



MAKERSPACE PLAZA

The Makerspace Plaza allows views into the trades and technology programs that give the KPU Tech campus its signature. It is the primary showcase space on campus, turning the programs inside-out. It can be a place to host campus-wide design and build events, a place for industry showcase, trades competitions, and more. An outdoor sitting stair frames the plaza and allows a place for students to passively observe the activities taking place there. It dually acts as a teaching space, creating an amphitheatre for lecture-style classes.



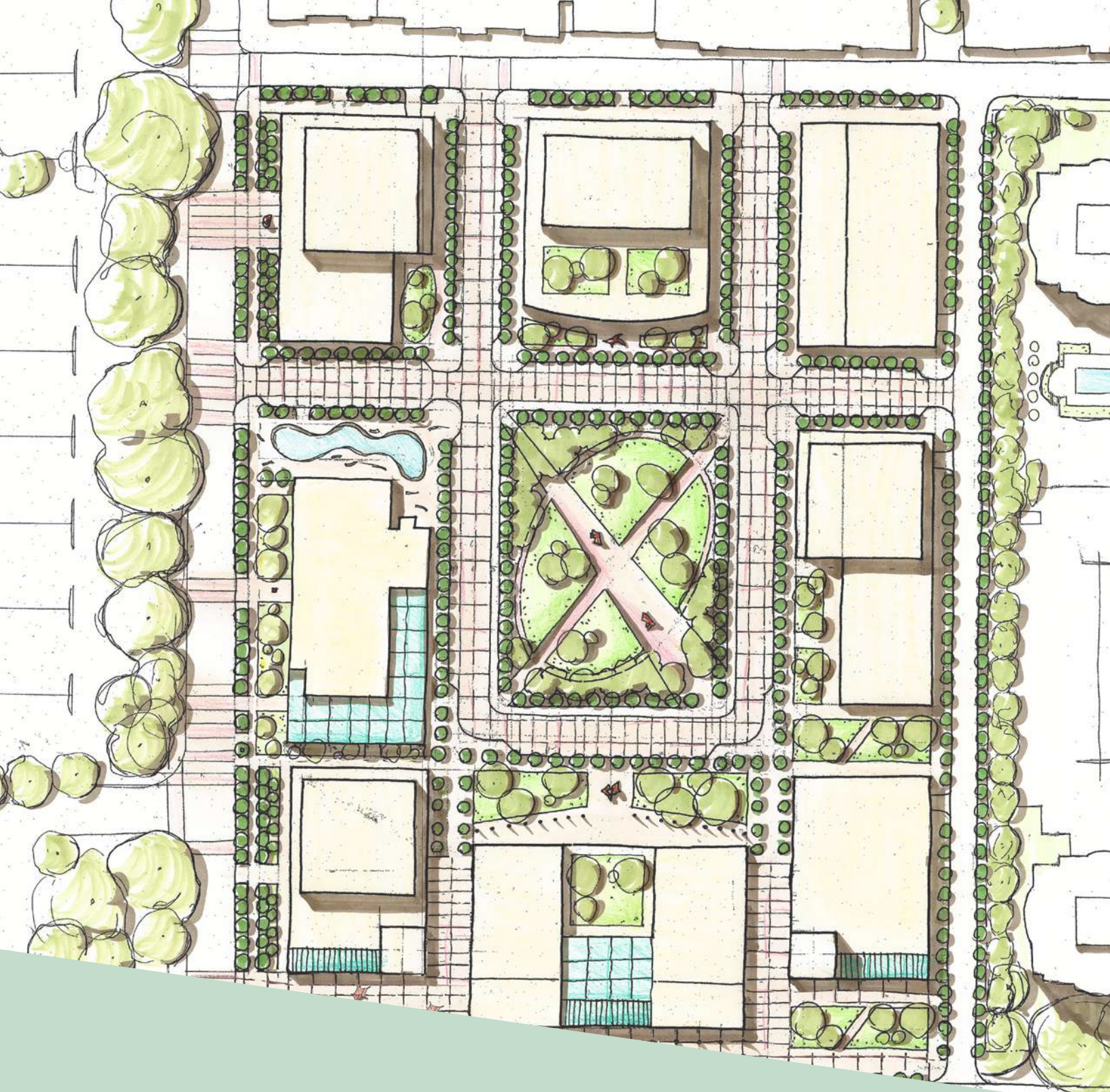
STREETSCAPE

The 55th Avenue Streetscape has a significant relationship with the new Surrey Hospital and Cancer Centre and should be designed in anticipation of its development to create a delightful pedestrian realm that supports wellbeing for both hospital and campus users.



NATURAL AREAS

KPU Tech's most significant natural spaces are riparian areas. Riparian areas are the interface between land and water supporting fish habitat. These areas are rich in ecological value and are characterized by hydrophilic plants, water-saturated soil, and abundant habitat. They should be conserved and protected as the campus develops.



KPU Richmond

Richmond Concept Plan

The Richmond Concept Plan reflects the campus' surrounding urban context with a new street grid that prioritizes pedestrian circulation. It continues the streetscape improvements made by the development of the Chip & Shannon Wilson School of Design to create a renewed interface on Kwantlen Ave.

The Richmond Campus is set in a rapidly evolving context. The redevelopment of Lansdowne Centre to the west will introduce exponentially more residents, amenities and open spaces to the neighbourhood and evolve the area to be more urban in character. As part of that development, Lansdowne Road is expected to transform into an east-west greenway, providing safe cycling circulation through Richmond's City Centre.

The campus concept responds to this in a phased approach. First, any new development is situated in an urban grid pattern. This will eventually lead to a development form that can support a pedestrianized Kwantlen Avenue to enable safe crossings to the amenities on the neighbouring site. Last, the concept plan create a stronger presence on Lansdowne Road through the eventual removal of the Richmond Main building.

The Concept Plan aims to achieve the following goals:

- + Pedestrian-priority Kwantlen Ave
- + Anchors of green space define campus front-doors
- + New quad forms a campus heart
- + Streetscape improvements create an improved connection to Lansdowne Skytrain station and Garden City Lands
- + Outdoor spaces and pedestrian connections are symbiotic with the future development at Lansdowne Centre
- + Renewed interface with Lansdowne Rd with at-grade building entrances
- + Re-envisioning of the Richmond Main building site

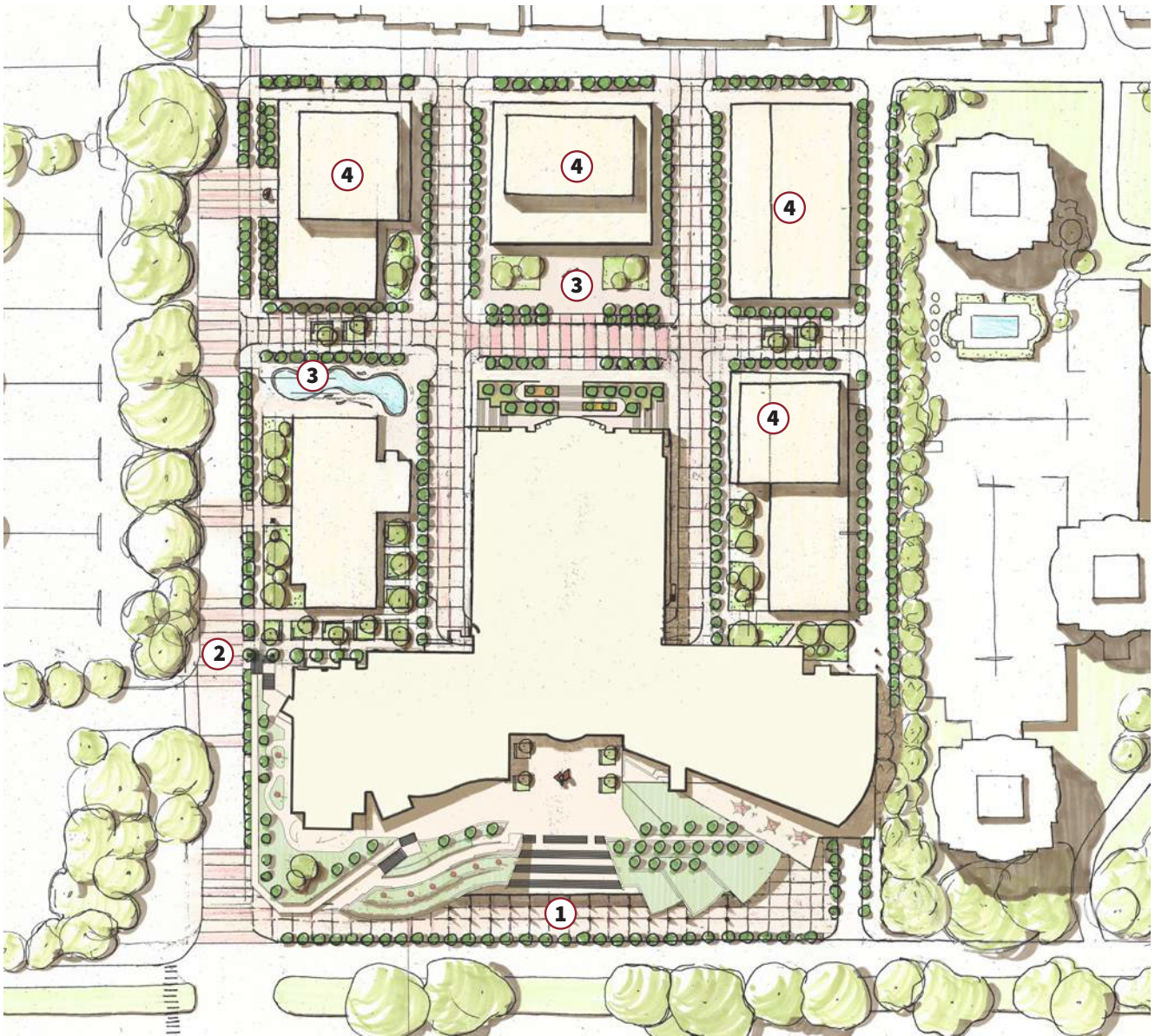


Figure 29 — Richmond Campus Concept Plan - Phase 1

- ① Refreshed entry to Lansdowne Road
- ② New pedestrian-prioritized street crossing connecting to redeveloped Lansdowne Centre
- ③ Vibrant open spaces to support outdoor gathering
- ④ Redevelopment opportunity for industry, research, and/or academic programming

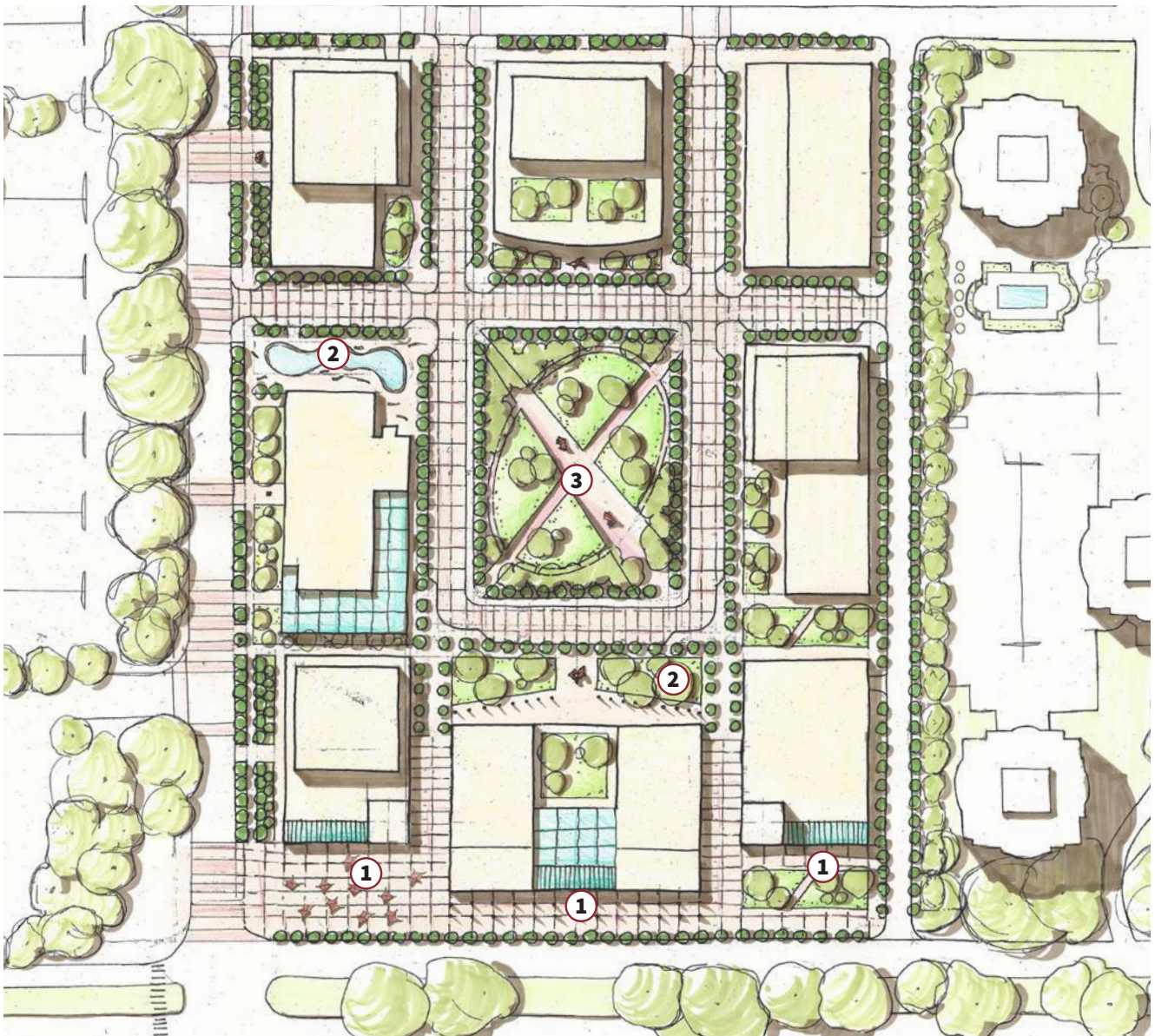


Figure 30 — Richmond Campus Concept Plan - Phase 2

- ① New ground-level entries from Lansdowne Road
- ② Vibrant open spaces to support outdoor gathering
- ③ Quad forms the heart of campus

Built Form

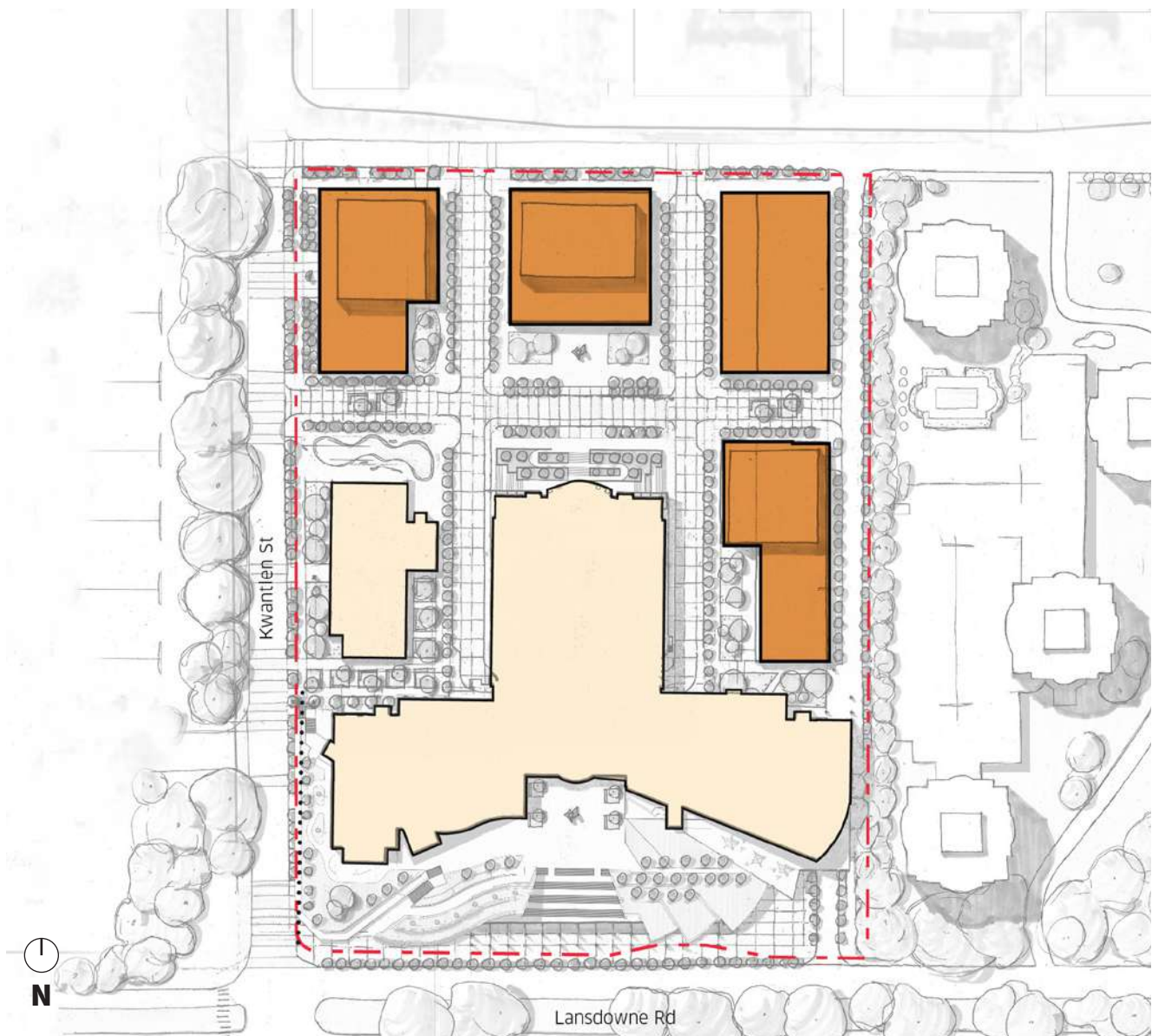


Figure 31 — Richmond Campus Existing Buildings, Proposed Buildings

LEGEND

- Existing
- Proposed Buildings

PROPOSED BUILDINGS

The campus is structured by one east-west and two north-south spines. Pedestrian links extend towards the Lansdowne development, the Lansdowne Skytrain station and Garden City Lands. New buildings frame streetscapes and forecourts to create a sequence of open spaces and active building uses. Over time, the buildings frame a central quad that becomes the heart of the campus.

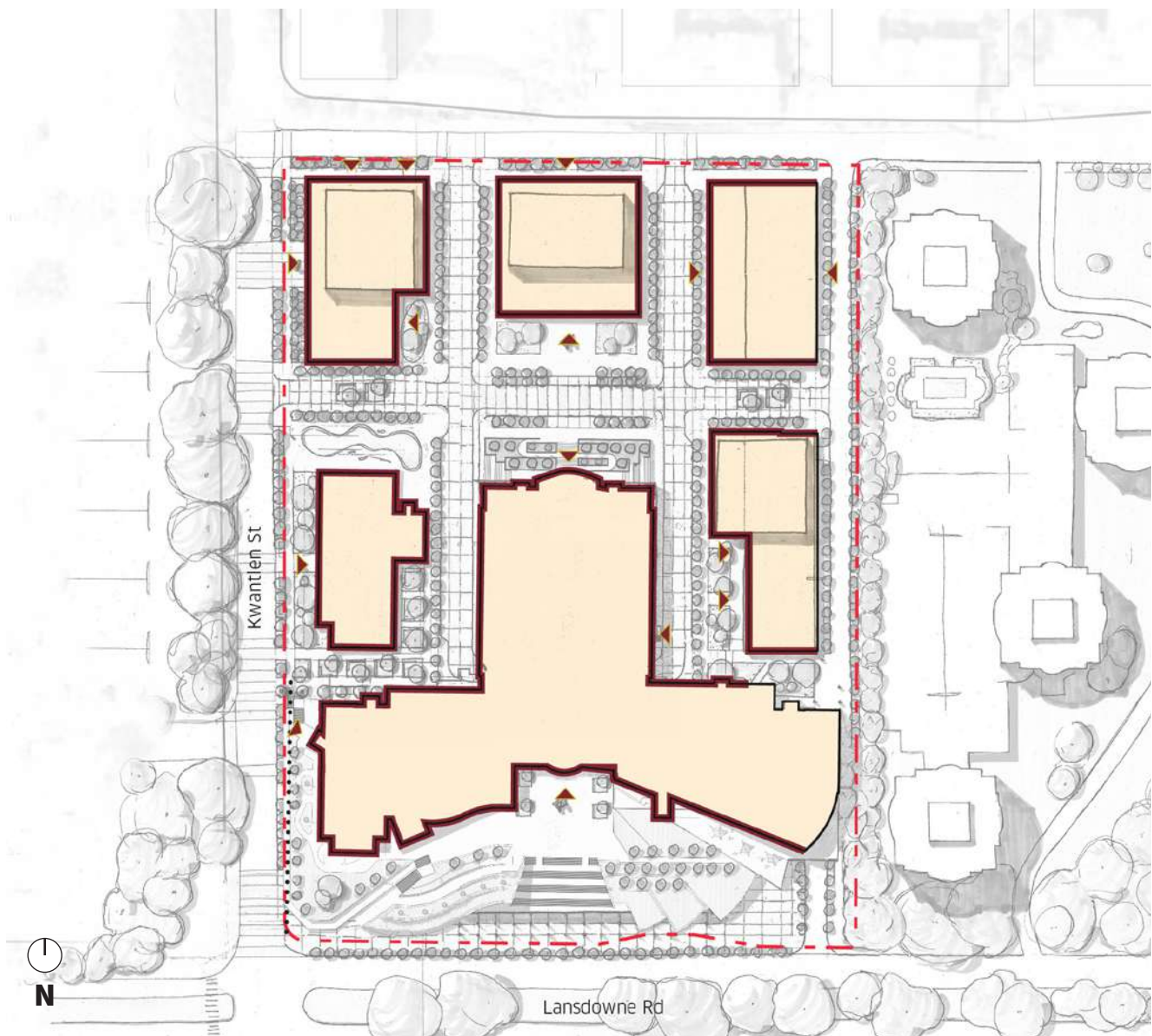


Figure 32 — Richmond Campus Frontages, Entrances and Transparency

LEGEND

- Frontages
- Entrances

FRONTAGES, ENTRANCES AND TRANSPARENCY

Buildings should front onto and provide entrances along all major pedestrian corridors and open spaces to avoid a “back-of-house” condition.

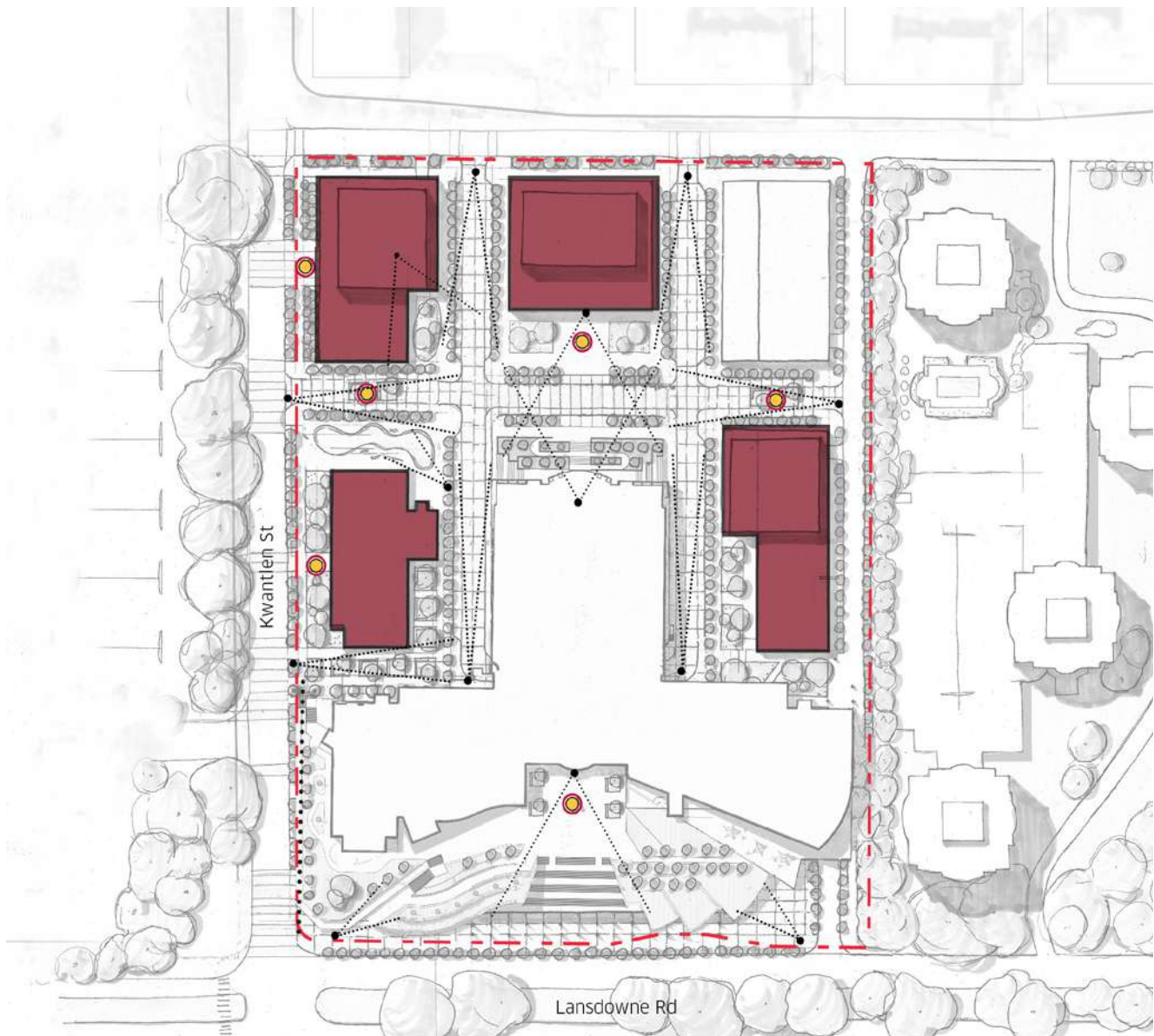


Figure 33 — Richmond Campus Building Views and Landmarks

LEGEND

- Landmark Building
- Art
- View Corridor

BUILDING VIEWS AND LANDMARKS

Landmark buildings and/or art features should be positioned to mark major campus entry points, including the east-west pedestrian crossings and formal building entrances.

Movement

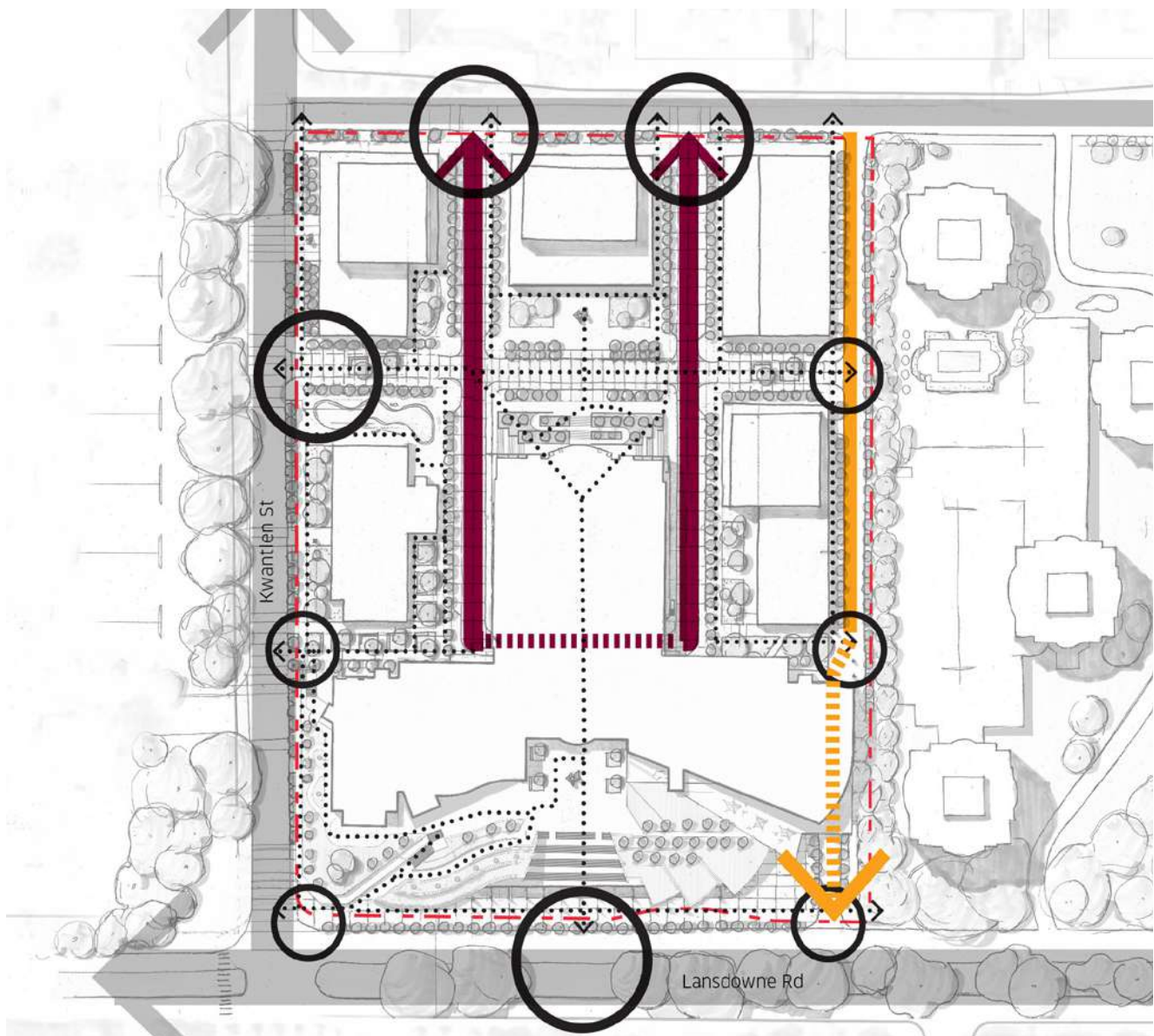


Figure 34 — Richmond Campus Street Hierarchy

LEGEND

- City Road
- Primary Campus Road
- Service Lane
- Pedestrian Links
- Primary Gateway
- Secondary Gateway
- Pedestrian Gateway

STREET HIERARCHY

The Plan proposes three new campus streets. As the campus develops, the back lane is expected to be converted to a formal city street. This will allow for new vehicular entrances to the campus and the diversion of traffic from Kwantlen Street, thereby promoting it as a pedestrian priority zone.

Loading and servicing is accommodated in a new service lane runs that parallels the eastern edge of the campus.

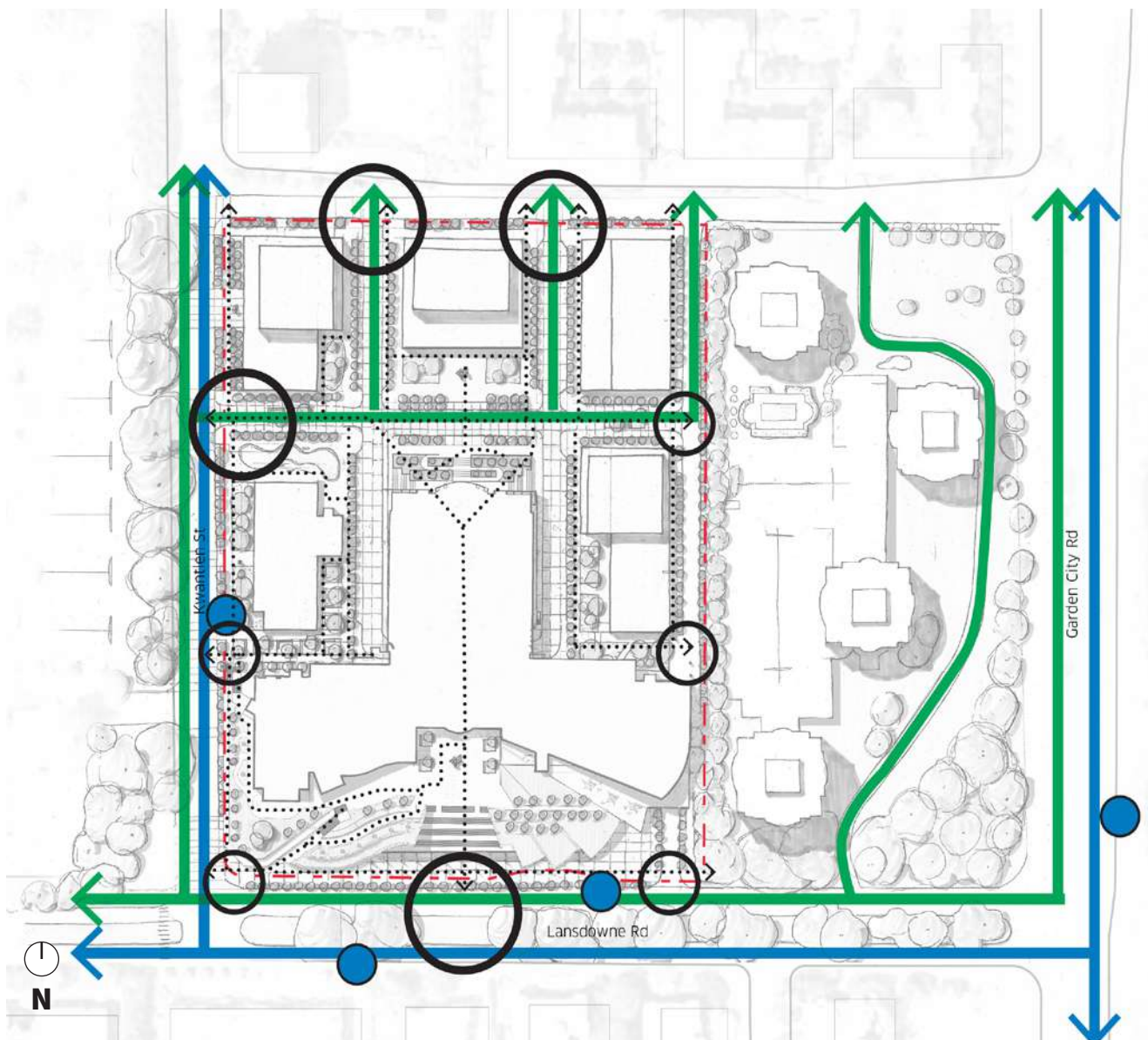


Figure 35 — Richmond Campus Transit and Cycling Circulation

LEGEND

- Transit Route & Transit Stop
- Cycling
- Pedestrian Links
- Primary Gateway
- Secondary Gateway
- Pedestrian Gateway

TRANSIT AND CYCLING CIRCULATION

A central focus of the Plan is improved pedestrian and cycling connections along Lansdowne Road, in line with the City's plans to form a greenway.

The Plan recommends continuing to advocate for improved transit connections between the Richmond campus and the remainder of the KPU campus network.

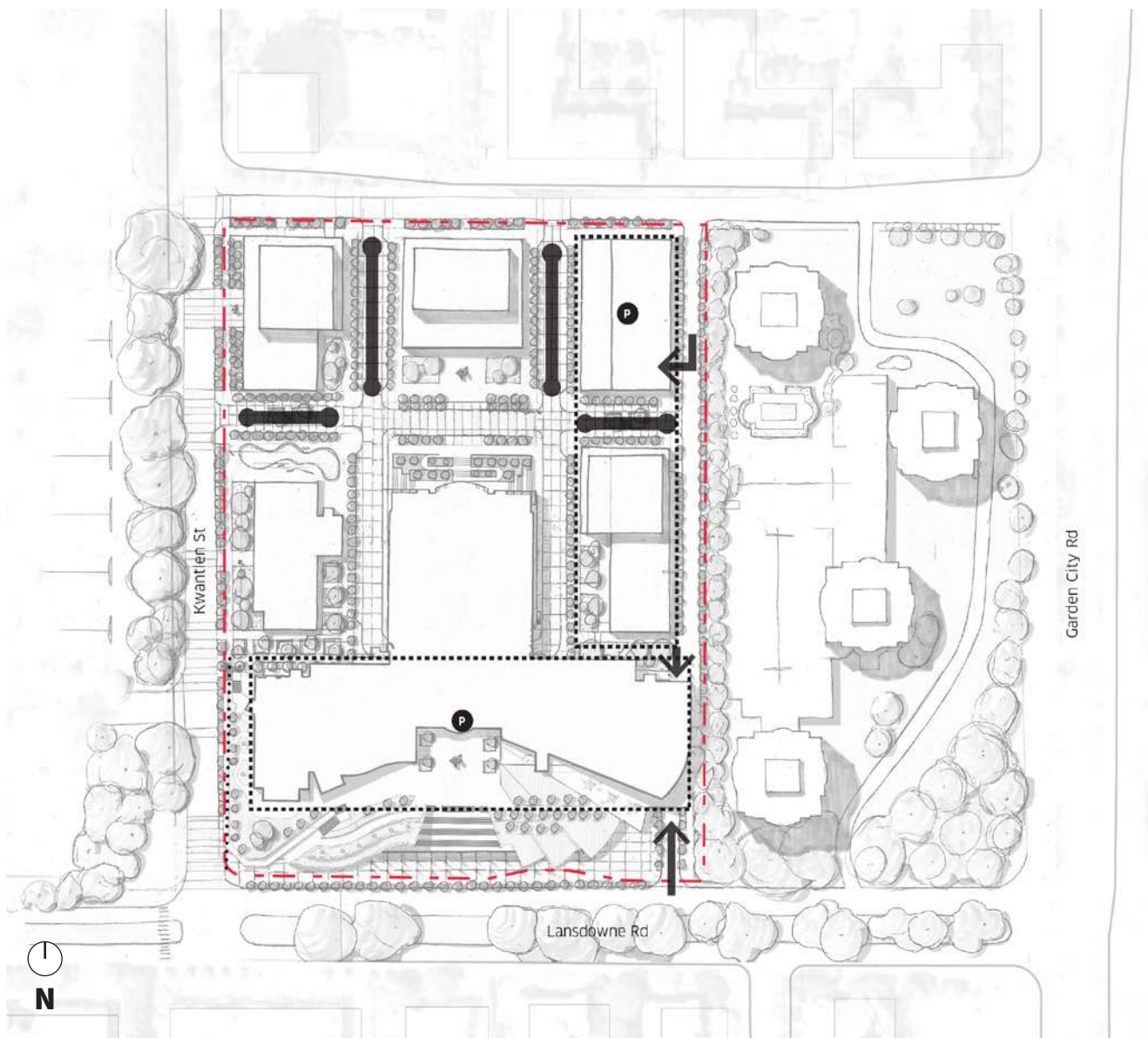


Figure 36 — Richmond Campus Parking

LEGEND

- On-Street Parking
- Below-Building Parking

PARKING

The Plan limits surface parking to on-street parallel parking and integrates additional parking stalls into new developments.

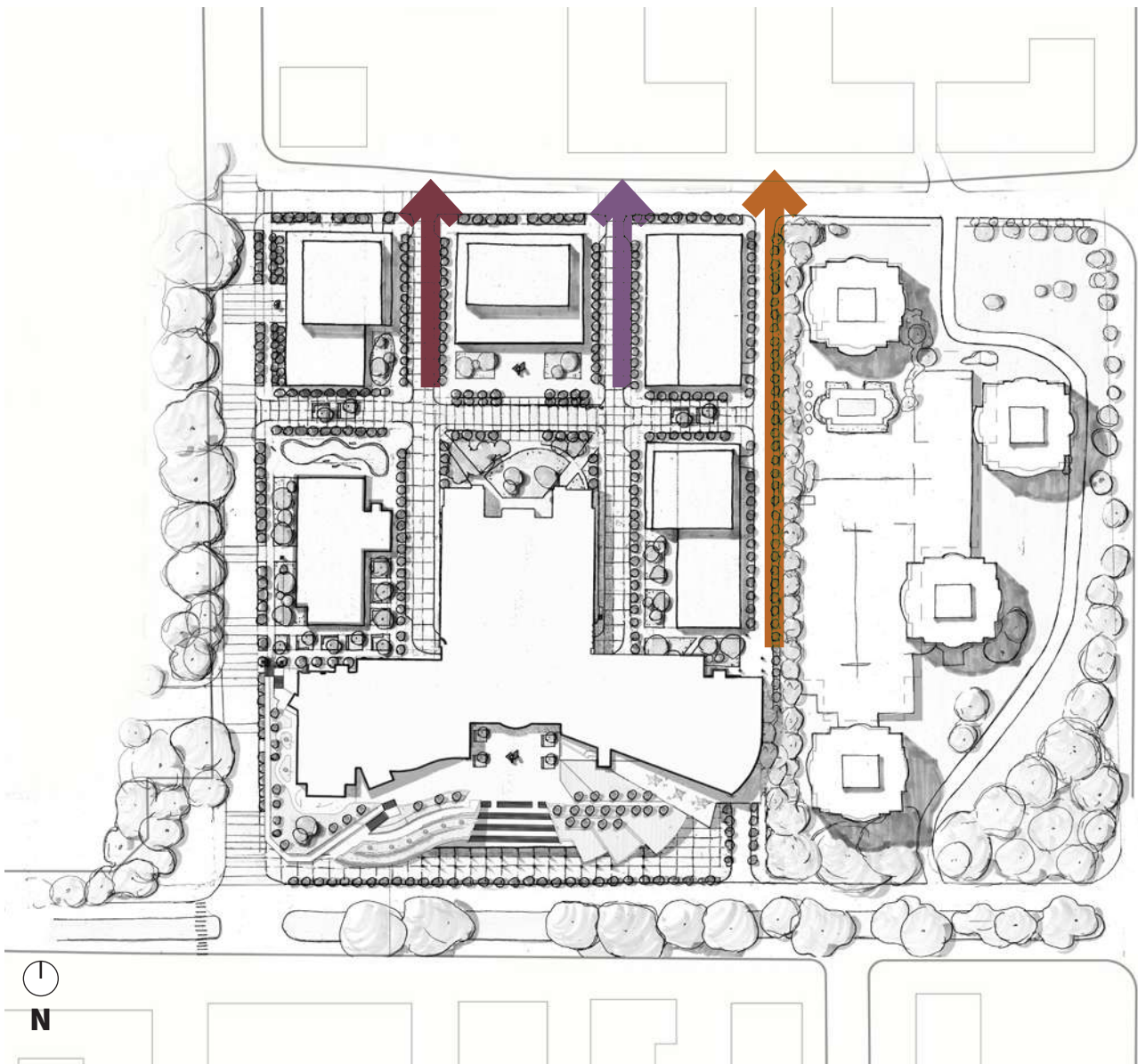





Figure 37 — KPU Richmond Road Typologies

ROAD TYPOLOGIES

	KPU Richmond St 1	R.O.W 18.9m
	KPU Richmond St 2	R.O.W 24.4m
	KPU Richmond St 3	R.O.W 12.5m

ROAD SECTIONS

The following road sections identify typical conditions for proposed campus streets.

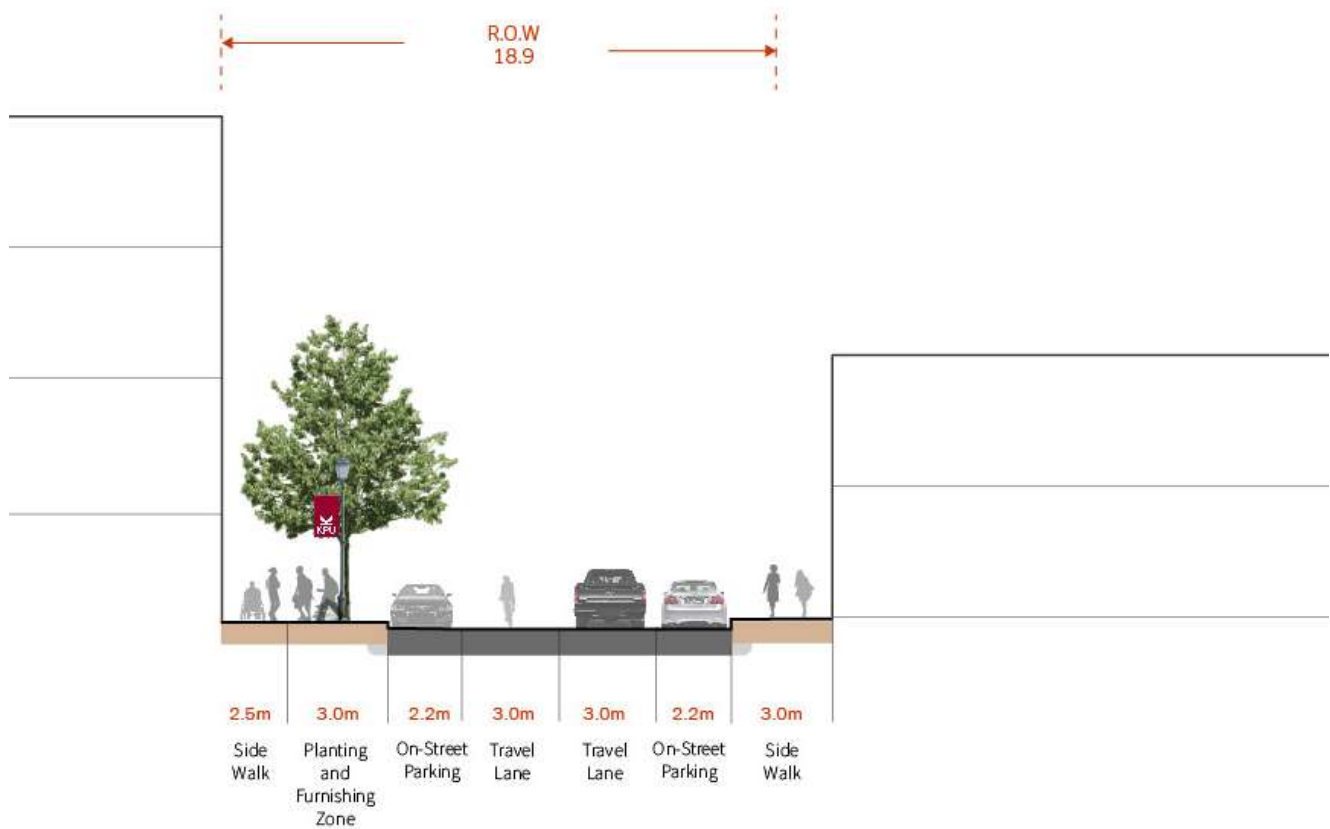


Figure 38 — KPU Richmond St 1

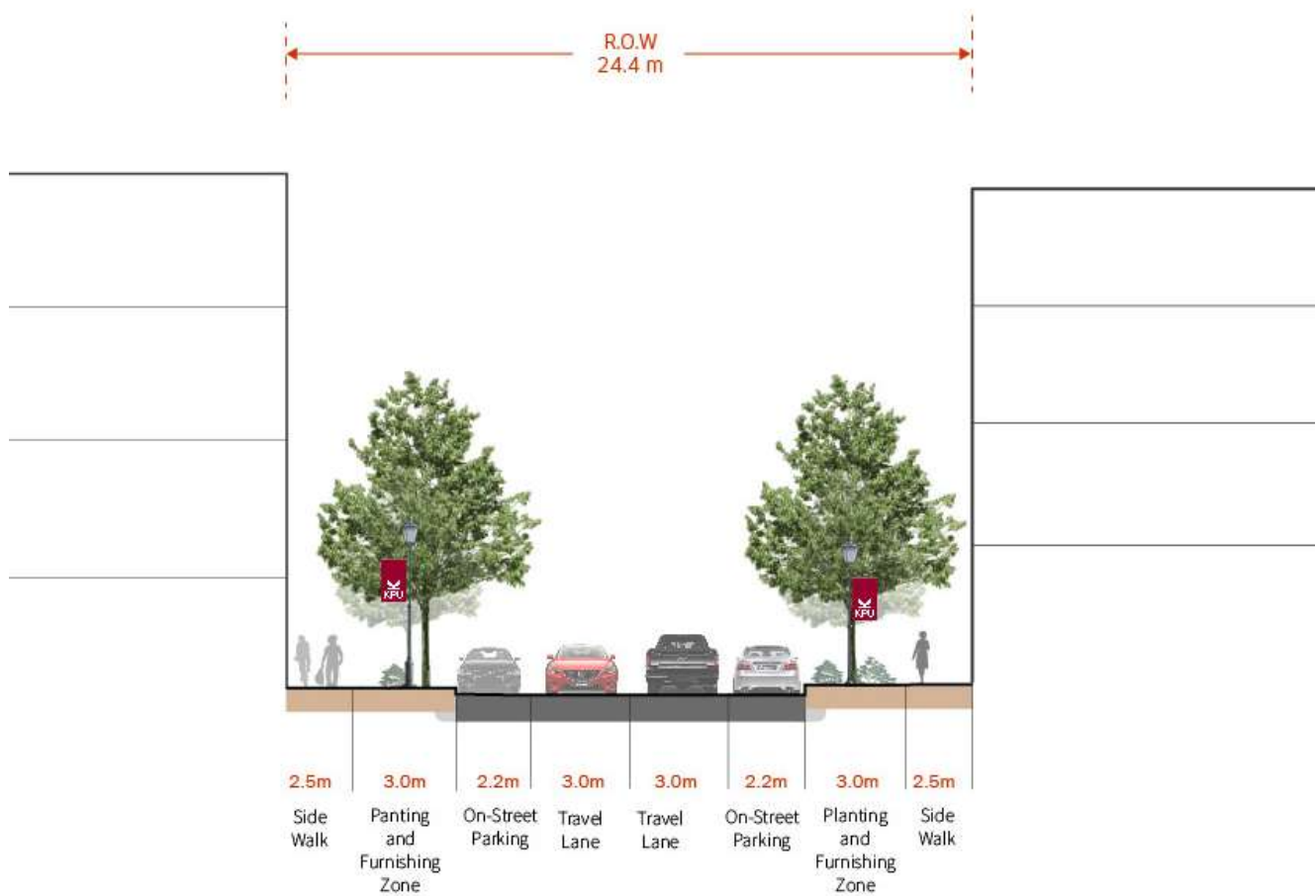


Figure 39 — KPU Richmond St 2

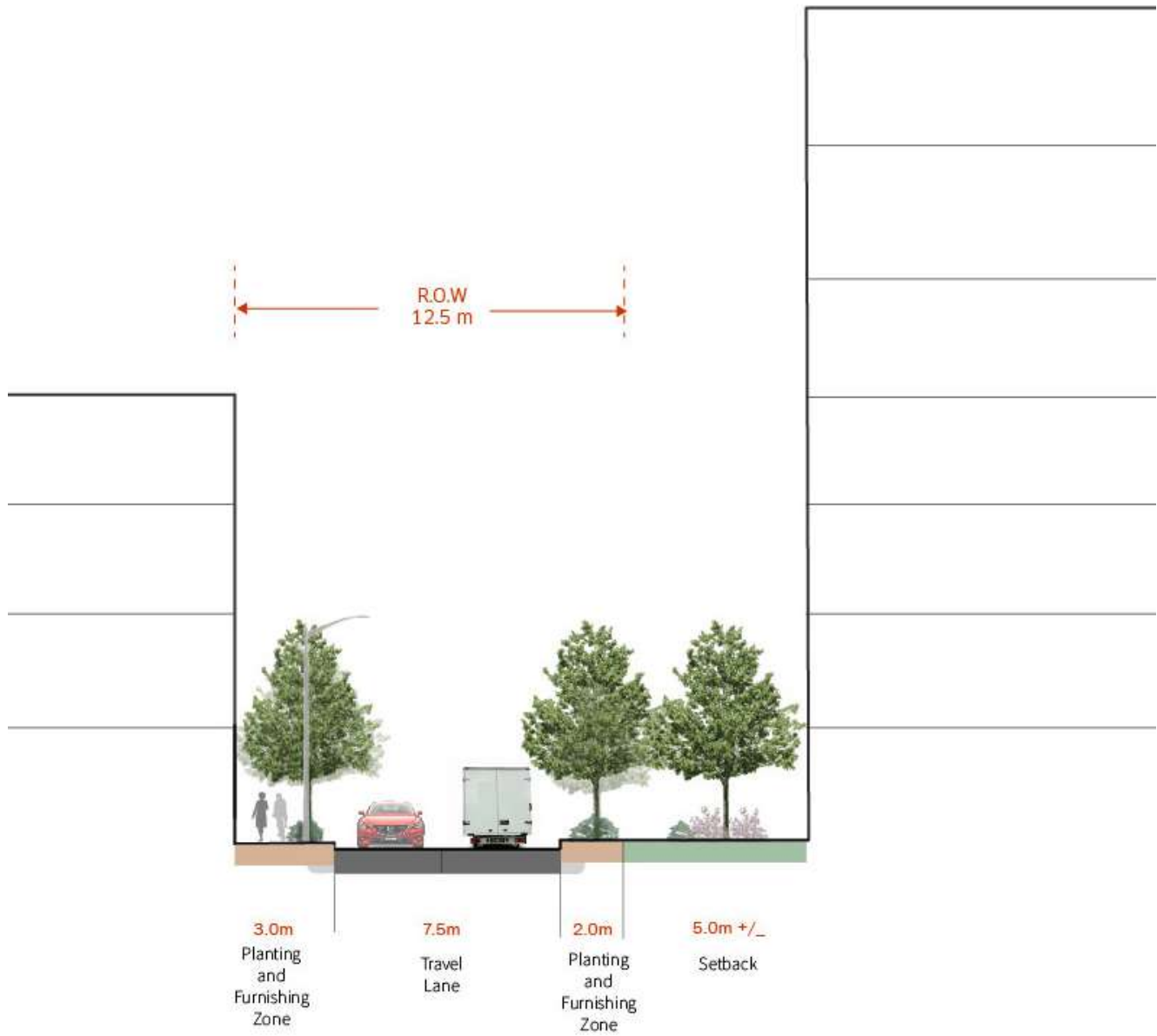


Figure 40 — KPU Richmond St 3

Open Space



Figure 41 — Richmond Campus Open Space

LEGEND

- Formal Plazas
- Forecourts
- Streetscapes
- Edge Landscapes

OPEN SPACE

New plazas and forecourts form places for the campus community to gather and find respite. Trees are planted to frame forecourts and the campus streetscape, bringing greenery to the urbanized landscape.



KPU Langley

Langley Concept Plan

The Langley Concept Plan celebrates and renews the ecological context of the campus. Surface parking gives way to compact development and naturalized planting. Kwantlen Crescent is redesigned to prioritize pedestrians and cyclists and becomes a thread that connects all campus buildings. New open spaces provide opportunities for teaching, learning and recreation. An additional pedestrian crossing knits together the two halves of campus.

The Langley Campus has the opportunity to advantage from the Surrey-Langley Skytrain expansion which terminates at Langley City Centre. KPU Langley can be a magnet, drawing people from Langley City Centre to the campus along Glover Rd. With improvements made to Glover Road's streetscape, it can be a vibrant active transportation corridor.

The Concept Plan aims to achieve the following goals:

- + Restore natural environment along Langley Bypass
- + Use new development sites to create a visible presence along Langley bypass and a pedestrian-friendly Kwantlen Crescent
- + Tie Logan Creek together with landscape improvements
- + Create a pedestrian loop
- + Provide visible connection with Langley City and the envisioned Innovation Boulevard along Glover Rd



Figure 42 — Langley Campus Concept Plan

- | | |
|---|---|
| <ul style="list-style-type: none"> ① Celebrated urban entrance along Glover Rd ② New plaza for KPU Brewing and Brewery Operations ③ New courtyard to support amenity space created in the wark/dumais house ④ Opportunity at the Best Western site ⑤ Recreational field ⑥ Refreshed entry plaza ⑦ Reoriented ceremonial entrance to align with the entry plaza | <ul style="list-style-type: none"> ⑧ Opportunities for additional research, partnership, and/or academic programmatic use or student housing ⑨ Pedestrianized Kwantlen Crescent ⑩ Naturalized open spaces
Thematic gardens aligned with learning opportunities and cross-cultural knowledge exchange ⑪ Revenue generating opportunities along Glover Road ⑫ Protected natural ecosystems with opportunities for pedestrian use |
|---|---|

Built Form



Figure 43 — Langley Campus Existing Buildings, Proposed Buildings

LEGEND

- Existing
- Proposed Buildings

PROPOSED BUILDINGS

The Campus Plan proposes new development along adjacent roads to frame the streetscape and bring vibrancy to the edge of campus and express Langley Bypass as part of - not a divider of - the Langley campus.



Figure 44 — Langley Campus Frontages and Entrances

LEGEND

- Frontages
- Entrances

FRONTAGES ENTRANCES AND TRANSPARENCY

The Campus Plan positions all buildings to provide frontages on streetscapes and open spaces with priority given to frontages and entrances along Kwantlen Crescent and Glover Road to express an urban character.



Figure 45 — Langley Campus Building Views and Landmarks

LEGEND

- Landmark Building
- Art
- View Corridor

VIEWS AND LANDMARKS

Prominent landmark buildings and gateway art features should be placed at the campus entrances and at the end of view termini to mark the arrival on campus and identify key wayfinding junctions.

Movement

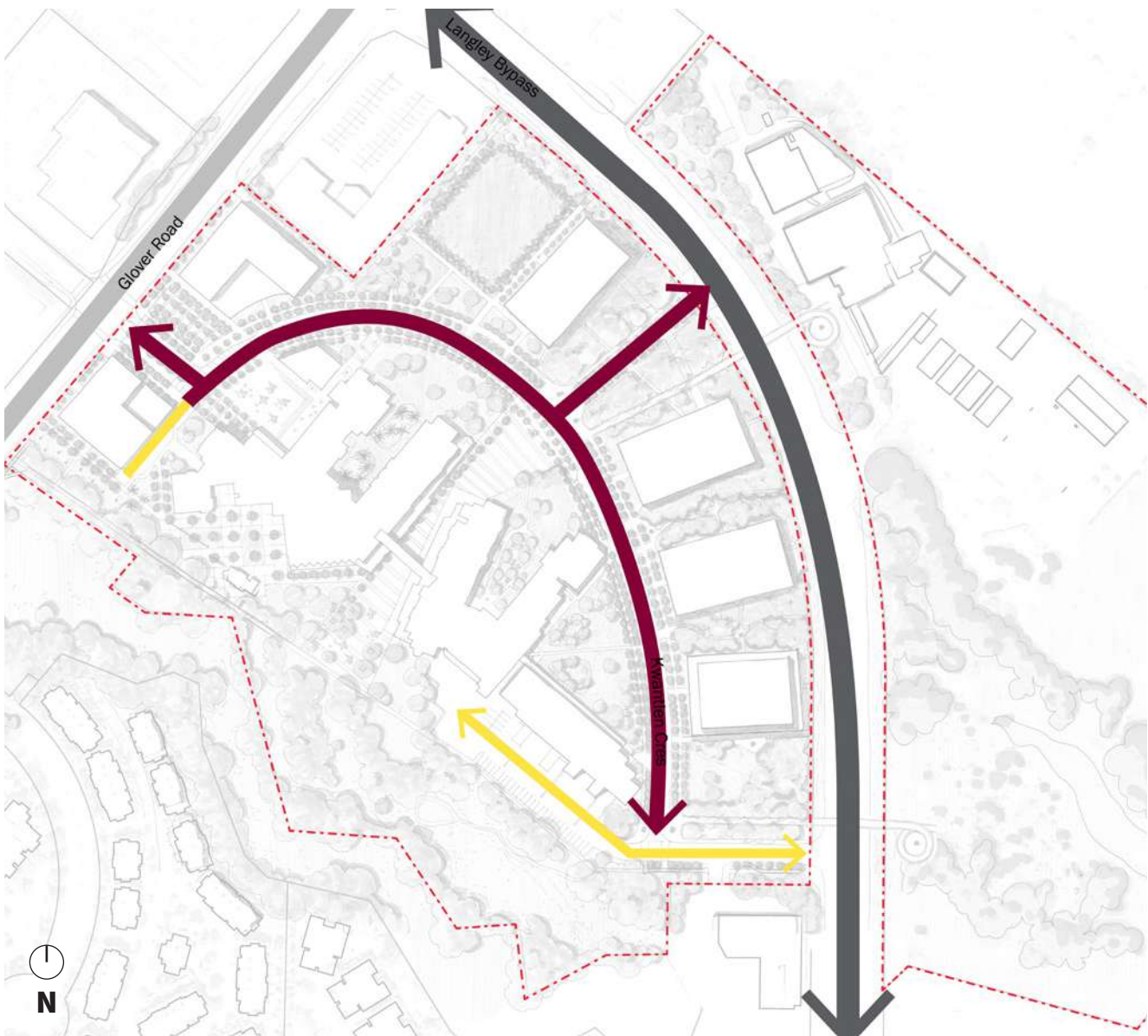


Figure 46 — Langley Campus Street Hierarchy

LEGEND

- Bypass
- City Road
- Primary Campus Street
- Service Lane
- Pedestrian Links
- Primary Gateway
- Secondary Gateway
- Pedestrian Gateway

STREET HIERARCHY

Vehicles can circulate through the campus by way of the primary Campus Street which offers access from Glover Rd and Langley Bypass.

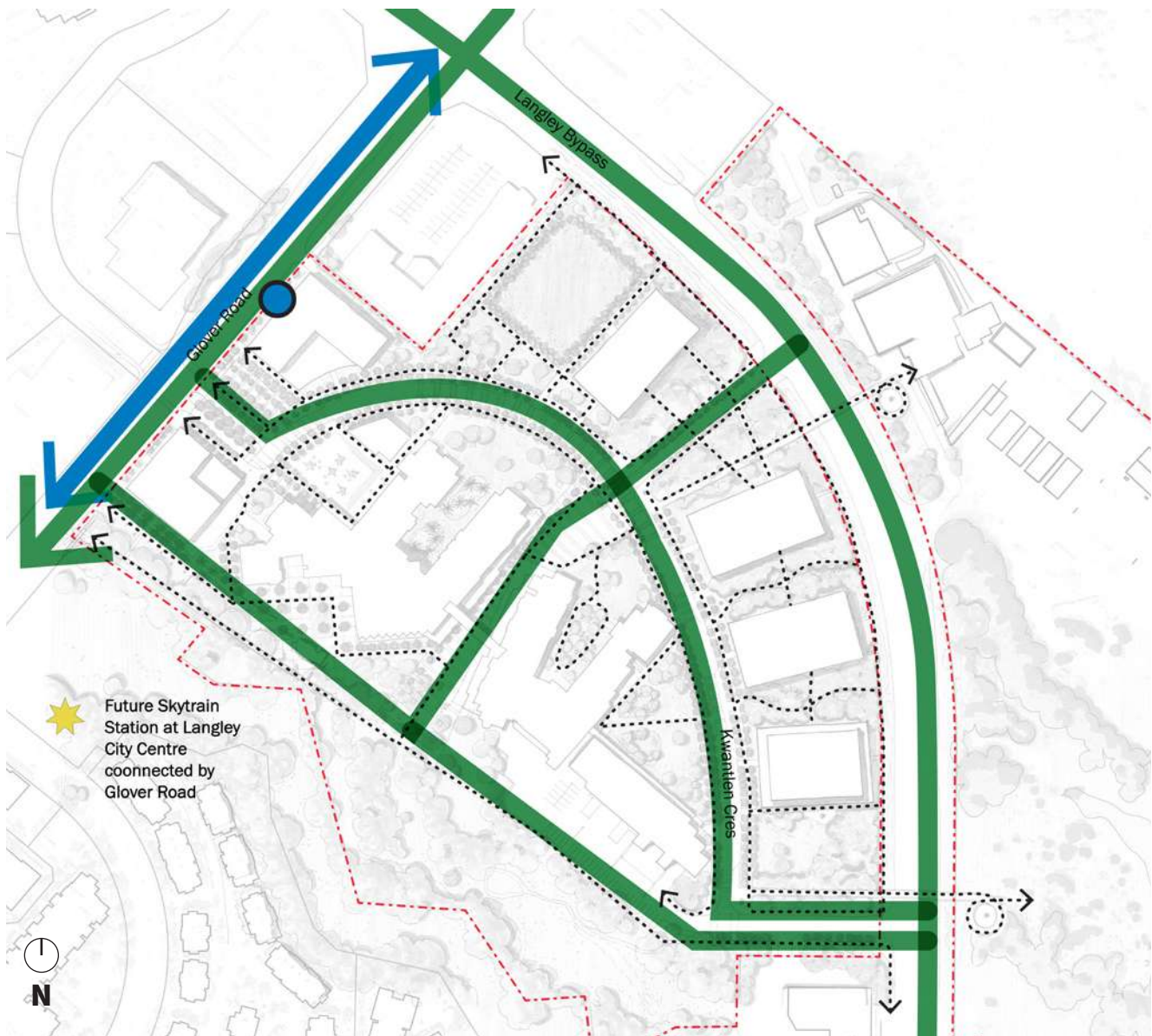








Figure 47 — Langley Campus Transit and Cycling Circulation

LEGEND

-  Transit Route & Transit Stop
-  Cycling
-  Pedestrian Links
-  Primary Gateway
-  Secondary Gateway
-  Pedestrian Gateway

TRANSIT AND CYCLING CIRCULATION

A key focus of the Plan is streetscape improvements along Glover Rd to promote active transportation to and from the proposed Langley City Centre skytrain stop. The Plan supports improved pedestrian links to the bus stop on Glover Road and allows cycling on all major axes of the campus. The Plan proposes improved cycling facilities along Glover Road and Langley Bypass.

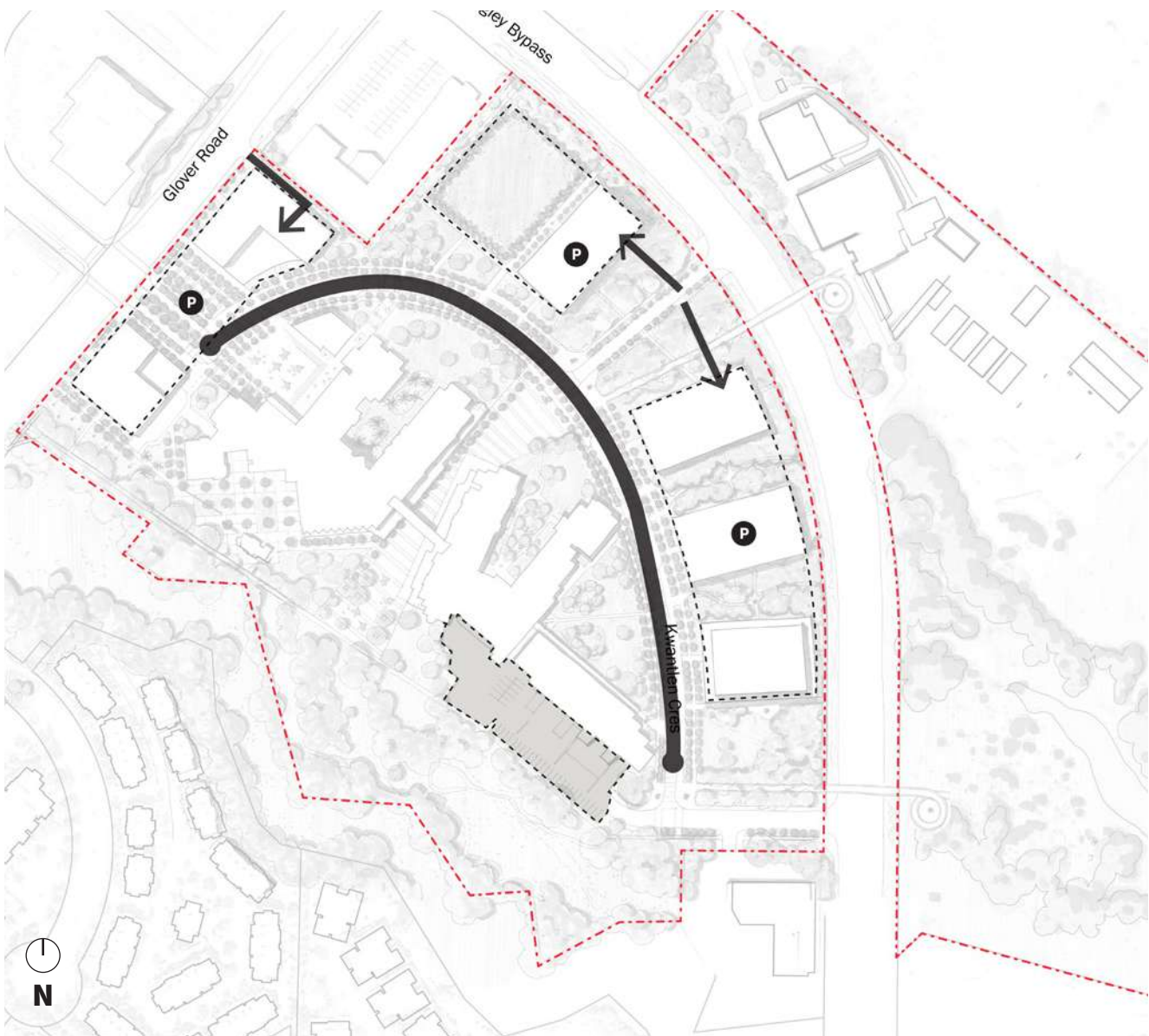


Figure 48 — Langley Campus Frontages and Entrances

LEGEND

- On-Street Parking
- Below-Grade Parking





PARKING

The Plan limits surface parking and locates new parking below grade.



Figure 49 — Langley Campus Road Typologies

ROAD TYPOLOGIES

	Kwantlen Cres 1	R.O.W 20.4m
	Kwantlen Cres 2	R.O.W 16.0m
	Kwantlen Cres 3	R.O.W 17.4m
	Langley Bypass	R.O.W 19.0m +/-

ROAD SECTIONS

The following road sections identify proposed typical conditions for local and campus streets.

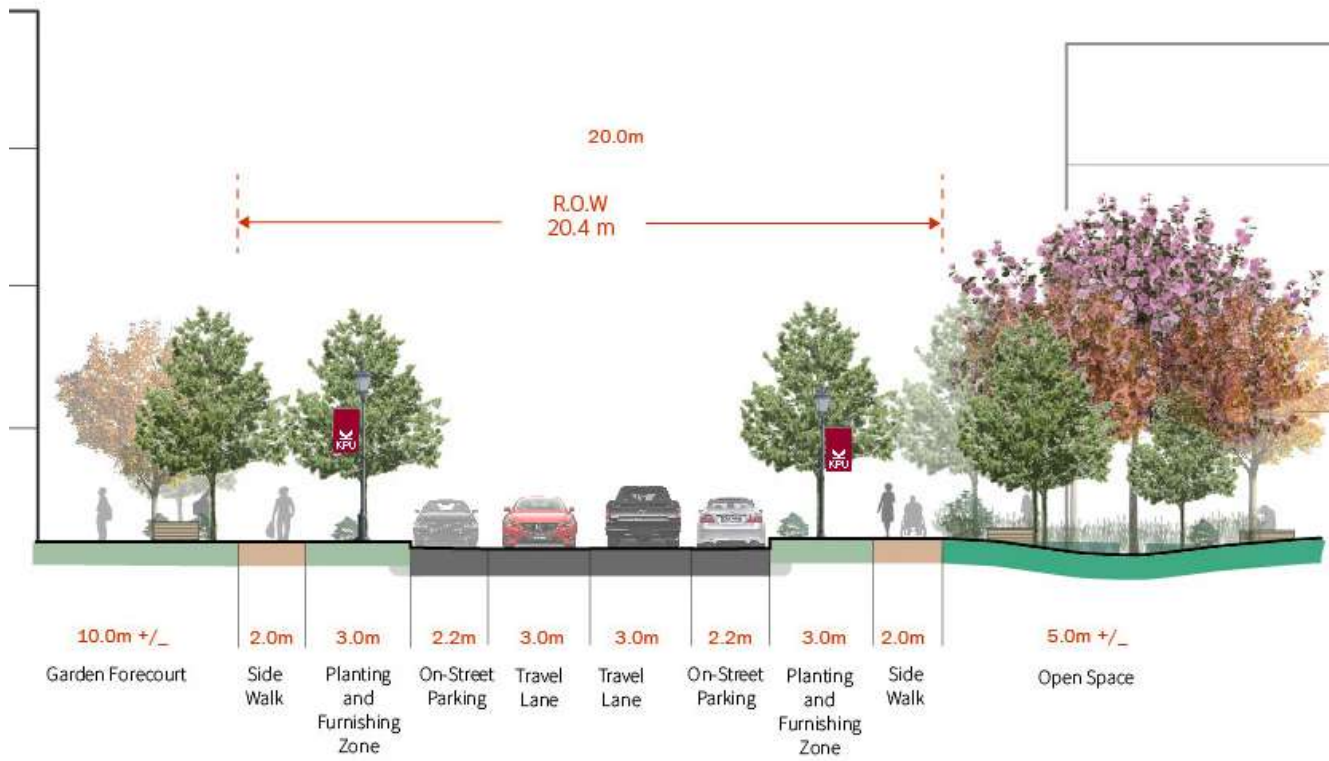


Figure 50 — Kwantlen Cres 1

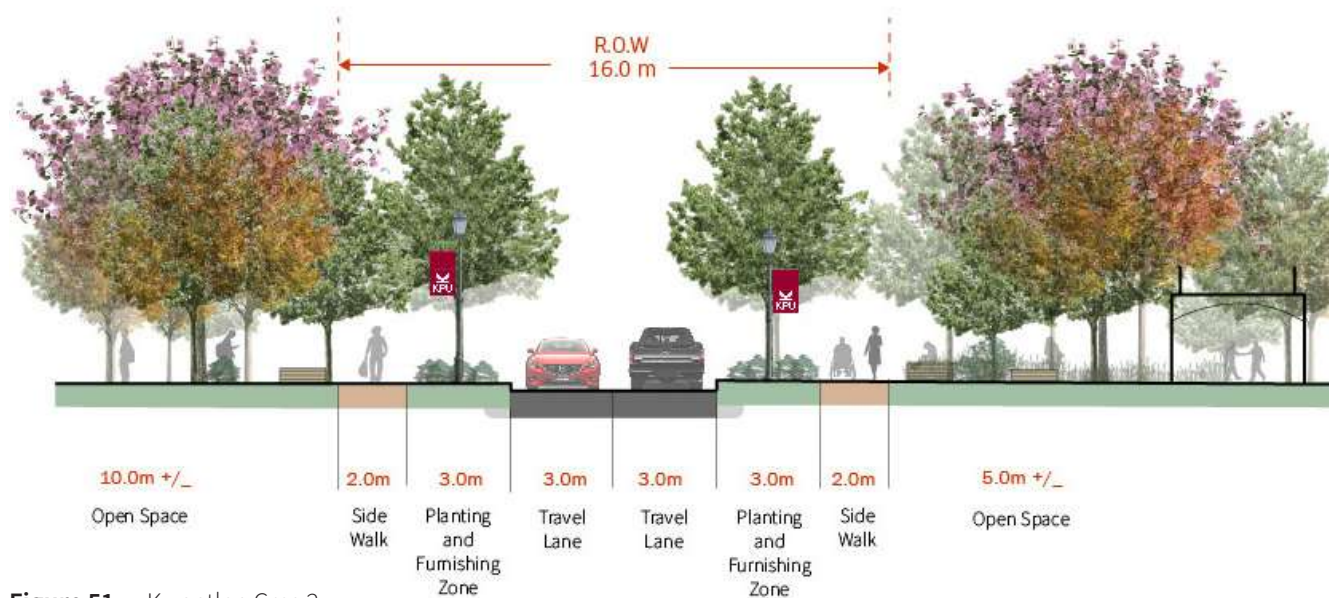


Figure 51 — Kwantlen Cres 2

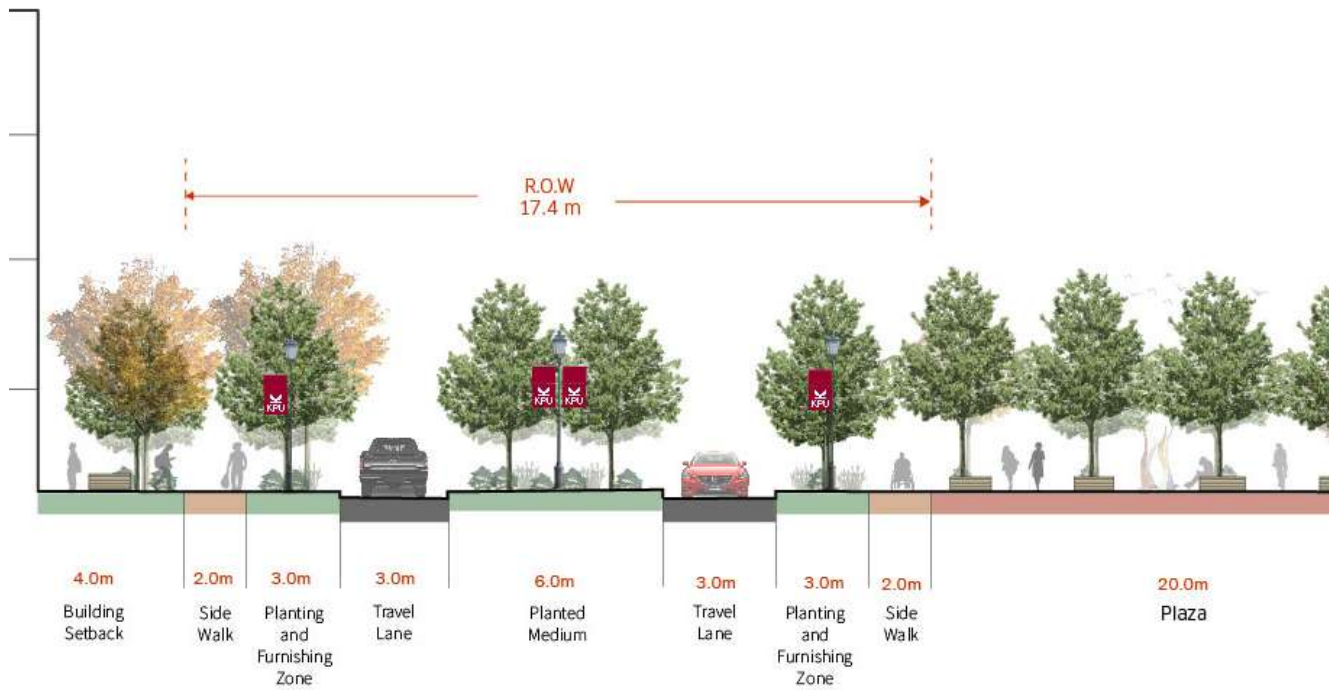


Figure 53 — Kwantlen Cres 3

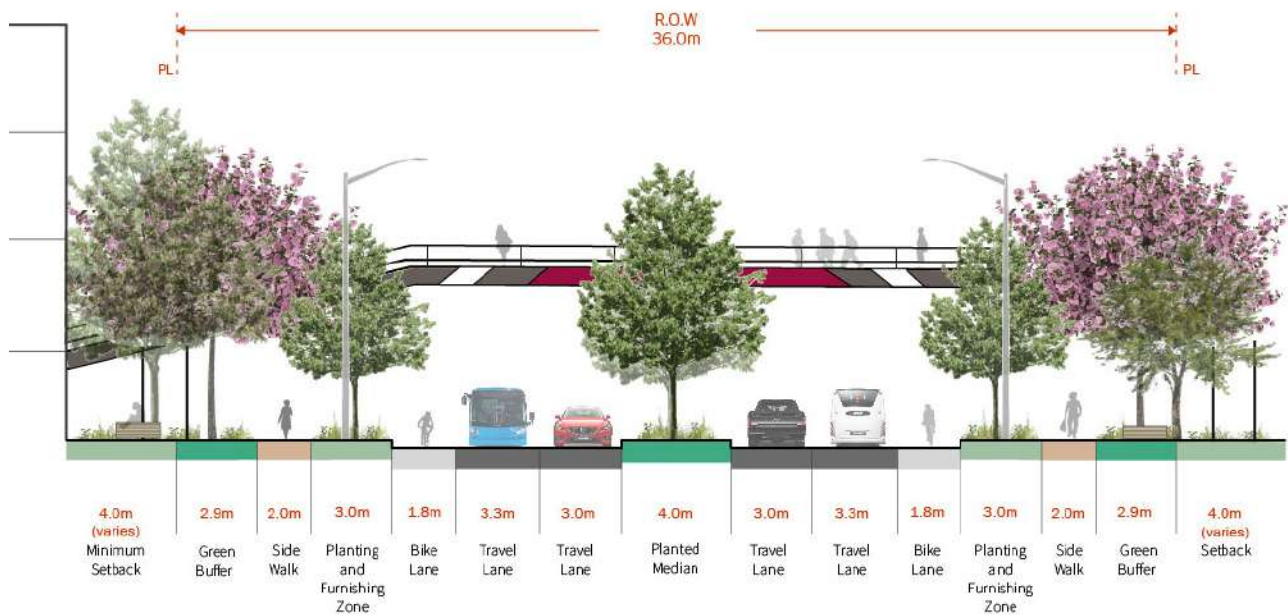


Figure 52 — Langley Bypass

Open Space



Figure 54 — Langley Campus Open Space

LEGEND

	Riparian Areas
	Naturalized Landscapes
	Formal Plazas
	Fields
	Courtyards
	Gardens
	Teaching Landscape
	Streetscapes
	Edge Landscapes

OPEN SPACE

The Open Space Framework provides recommendations for all open space types with special consideration given to the formal entry plaza off of Glover Road, the character of the Kwantlen Crescent streetscape and the naturalized landscapes surrounding the new campus development off of Langley Bypass.



LEARNING GARDENS

The learning gardens provide applied teaching and learning opportunities through the partnerships with KPU Faculties. The gardens may each take on a different character, aligned with their academic use.

GLOVER PLAZA

The plaza distinguishes Glover Road as a formal entry point. Because the plaza is visible from the street, it is the ideal space for community events such as farmers markets and brewery sales. It is a place to gather for campus-wide events or for afternoon study sessions. It is a heart on the campus.



NATURALIZED AREAS

The naturalized landscape areas that span Kwantlen Crescent to Langley Bypass are meant to extend the character of the Logan Creek riparian area with indigenous planting that supports pollinator and bird habitat. New buildings and pedestrian paths to be site in this landscape with the character of “pavilions in the forest”.



Phasing & Implementation

Over the course of the fall academic term, the planning team will be engaging with KPU stakeholders and Indigenous partners to outline a Phasing and Implementation strategy that identifies low-hanging fruit, short term priorities and long-term targets.

As with all aspects of this document, it must be generated through the collaboration of the perspective of the whole campus community.

