





## SENATE STANDING COMMITTEE ON PROGRAM REVIEW

Minutes of Regular Meeting  
Wednesday, March 04, 2025  
2:00 p.m. – 4:00 p.m.  
MS Teams Online

---

**Present:**

**Voting Members**

Aimee Begalka  
Caja Blomley  
Craig Wright  
Enrico Tanafranca  
Fergal Callaghan, Chair  
Jack Hayes  
Jeff Dyck  
Jianying (Jennifer) Gao  
Krista Gerlich-Fitzgerald  
Lindsay Norris  
Meredith Laird  
Meredith Haaf  
Nicole Beaulieu  
Laura Del Rio Torres

**Ex-Officio**

Diane Purvey, Acting President  
Kwuntiltunaat (Kim Baird), Chancellor

**Non-Voting Members**

Catherine Schwichtenberg  
Melike Kinik-Dicleli  
Nishan Perera

**Administrative Resources**

Ruby Gupta  
Michelle Molnar

**Guests**

Andhra Goundrey  
Carley Hodgkinson  
Erin Ashenurst  
Herraj Sandhu  
Harmeet Olson  
Sundeep Varaich  
Sherilyn Sweeney  
Sharmen Lee

---

**Not Present:**

**Voting Members**

Bogdan Bryja

**Non-Voting Members**

Theresa Voorsluys  
Laura McDonald

---

**1. Call to Order and Territorial Acknowledgement**

The Chair, Fergal Callaghan, called the meeting to order at 2:01 p.m.

**2. Approval of Agenda**

Jack Hayes moved the agenda be confirmed as amended.

The motion carried.

### 3. Approval of Minutes, January 28, 2026

Laura Del Rio Torres moved the minutes be accepted as circulated.

The motion carried.

### 4. Chair's Report

No formal report.

### 5. New Business

#### 5.1. Graphic Design for Marketing (GDMA) Self-Study Report

The chair summarized the reviewers' comments, noting that the report was well-written and met requirements, with suggestions for improvements such as adding summary paragraphs and clarifying the relationship between Front-End Development for Interactive Applications (FDIT) and GDMA.

##### Action Items for The Proponent:

- In Chapter 1, replace the term “pathway” to avoid conflict with its defined meaning at KPU.

**Nicole Beaulieu moved, that the Senate Standing Committee on Program Review approve the Graphic Design for Marketing Self-Study Report as amended.**

The motion carried.

#### 5.2. Graduate Nurse Internationally Educated Re-Entry Self-Study Report

The chair summarized generally positive feedback, including a recommendation to enhance curriculum mapping and quality assurance, noting that mapping to the BC College of Nurses and Midwives (BCCNM) competencies is addressed in other reports and will be incorporated into the program review as recommended.

The department clarified that NCLEX-RN preparation is not a formal program objective, as the program focuses on Canadian nursing practice and students may independently write the exam. The committee supported consultation with the Indigenous Services office to inform Indigenization efforts beyond student survey data, and discussed the expansion of simulation labs and Student Success Lab supports, noting facilitator capacity challenges and plans to work with the Dean's office to strengthen support and faculty training.

##### Action Items for The Proponents

- add explicit recommendations related to curriculum mapping;
- include consultation with Indigenous Services office regarding Indigenization;
- Remove the first recommendation in Chapter 4 regarding evaluating instructional standards, as no evidence was identified to support its inclusion; and
- recommend collaboration with the Dean's office to strengthen simulation support.

**Jack Hayes, moved that the Senate Standing Committee on Program Review approve the Graduate Nurse Internationally Educated Re-Entry Self-Study Report with amendments.**

**The motion carried.**

## **6. Items for Discussion**

### **6.1. Membership Review**

Led by the Senate Vice-Chair, Catherine Schwichtenberg, the committee reviewed its membership composition, agreeing that overall representation is appropriate while noting ongoing challenges in filling vacancies and the potential value of additional representation from certain areas. Members discussed workload and capacity pressures, particularly related to lengthy report reviews and recruitment of external reviewers, and suggested adding capacity, distributing work more efficiently, and considering operational adjustments. Roles and expectations were confirmed as generally clear, supported by guidance from the Office of Planning and Accountability, with suggestions to streamline report recommendations and monitor timelines. The committee also emphasized the importance of diverse perspectives, including Indigenous representation, and supported holding occasional in-person meetings.

## **7. Manager's Report for the Office of Accountability and Planning**

Melike Kinik-Dicleli, Manager, Quality Assurance presented her report as attached and noted that there are 37 programs in various stages of the program review process.

## **8. Adjournment**

The meeting adjourned at 3:25 p.m.

**SENATE**

**Agenda Number: 5.1**

**Meeting Date: April 1, 2026**

**Presenter(s):** Rebecca Harbut, Christina Heinrick, Brett Favaro

---

**AGENDA TITLE:** SUSTAINABLE AGRICULTURE SECOND ANNUAL FOLLOW-UP REPORT

**ACTION REQUESTED:** Motion

**RECOMMENDED RESOLUTION:**

THAT the Senate Standing Committee on Program Review approve the Sustainable Agriculture Second Annual Follow-Up Report as attached.

THAT the program submits another annual follow-up report next year.

---

**COMMITTEE REPORT**

For Secretariat Use Only

---

**Attachments**

Sustainable Agriculture Second Annual Follow-Up Report

---

**Submitted by**

Melike Kinik-Dicleli, Manager of Quality Assurance, Office of Planning & Accountability

**Date submitted**

March 5, 2026

---

---



## Sustainable Agriculture Second Annual Follow-Up Report

Date Self-Study Report approved by SSCPR: November 2, 2022

Date of External Review Site Visit: May 19, 2022

Date Quality Assurance Plan approved by SSCPR: November 23, 2022

Date First Annual Follow-Up Report approved by SSCPR: May 22, 2024

Date Second Annual Follow-Up Report submitted to SSCPR: Feb 23, 2026

### SECOND PROGRESS REPORT

MONTH/YEAR WHEN THE FIVE-YEAR ACTION PLAN BEGINS: January 2023 to December 2027

**GOAL 1:** Build recognition of the Sustainable Agriculture program within the KPU community and externally (regionally, nationally, and internationally)

Actions(s) Required to Achieve this Goal	Led by	Proposed Start Date (M/YY)	Proposed Completion Date (M/YY)	Status	Description of Progress to Date/Reasons for Lack of Progress
Hold information sessions, presentations, and tours of the KPU Farm for FSO staff, KPU Administration, marketing staff and other departments that have intersecting interests	Rebecca Harbut	6/2022	8/2025	<i>Completed</i>	<p>Related Events/Activities (D/M/Y)</p> <p>9/6/23- KPU International Department &amp; Overseas Partners Farm Tour</p> <p>9/9/23 – Sust Ag booth at ‘Day at the Farm’ public event</p> <p>13/9/23 – TD Bank Gift announcement was held at KPU Farm, various KPU Offices were included in this announcement.</p> <p>15-16/9/23 – <a href="#">Stories of Regeneration</a> – partnered with national organization on farm tour, long table dinner, video feature, podcast and webinar all of this content was shared with KPU marketing and other groups at KPU</p> <p>20/9/23 – <a href="#">Polytechnics Canada Video</a> production. This video was shared with KPU</p> <p>7/11/23 - Global Partnerships organized farm tour with delegation of university administrators from Ireland</p>

## Sustainable Agriculture Second Annual Follow-Up Report

Actions(s) Required to Achieve this Goal	Led by	Proposed Start Date (M/YY)	Proposed Completion Date (M/YY)	Status	Description of Progress to Date/Reasons for Lack of Progress
					<p>5/12/23 - Sustainable Agriculture and Physics Student Research Symposium</p> <p>Wild Spaces Community of Practice (Led by Lee Beavington) have held several events at the farm</p> <p>16/2/24 - Erika Balcombe brought class to farm to learn about "Wellness In Learning Spaces"</p> <p>19/3/24 - Sustainable Agriculture students and faculty presented work at KPU Research Showcase</p> <p>27/4/24 - TD Branch Employees Workshop. Various KPU Offices involved.</p>
<p>Properly identify the KPU Farm with signage including directional signage (such as place names) and interpretive signage where the public can learn more about our program and farm.</p>	<p>Mike Bomford</p>	<p>1/2023</p>	<p>12/2023</p>	<p><i>Started</i></p>	<p>A signage proposal was developed; however, no further support has occurred. There is still NO signage present at the KPU Farm. This remains a critical need for the program. The external TD Grant secured by department faculty will provide funding for educational signage but will not provide funding for a sign that indicates that the KPU Farm is part of the KPU Richmond campus facility. As the KPU Farm is on City of Richmond property, any signage must be approved by the City of Richmond.</p> <p><i>01/2026- This item is still in progress. The Dean of Science has helped facilitate progress on this project and it is hopeful it will be completed soon.</i></p>



## Sustainable Agriculture Second Annual Follow-Up Report

Actions(s) Required to Achieve this Goal	Led by	Proposed Start Date (M/YY)	Proposed Completion Date (M/YY)	Status	Description of Progress to Date/Reasons for Lack of Progress
Identify specific recruitment strategies for the program together with FSO	Rebecca Harbut	1/2023	12/2023	<i>Completed</i>	<p>Faculty have worked with FSO on dual credit initiative, however, these were not able to move forward in 2023-24 due to limited capacity of the Sust Ag faculty and the high schools during this term.</p> <p><i>01/2026- we have worked with FSO on recruitment efforts (info days, campus visits, high school counselors workshops, and unique programs focused on getting high school students on the farm.) We have also been working with the Richmond School District to develop more opportunities to bring students to KPU.</i></p>
Work with marketing to establish a marketing campaign and materials (including signage and outreach materials, website revamp)	Rebecca Harbut	6/2022	8/2023	<i>Completed</i>	<p>31/7-1/8/23 – Marketing photographer to farm to take photos</p> <p>Website update has been done with effort from the department, deans office and marketing.</p> <p>No funding has been identified for a marketing campaign.</p> <p>No funding has been identified for signage. There remains NO SIGNAGE at the KPU Farm</p> <p><i>01/2026- Signage is in process. There has been progress on the signage front and there has been increased online marketing.</i></p>
Consult with departments/faculties regarding potential cross-listed/service courses	Rebecca Harbut	9/2022	8/2023	<i>Completed</i>	<ul style="list-style-type: none"> <li>- Development of cross-listed indigenous perspectives of food systems course</li> <li>- Collaboration with Biology to restructure 1<sup>st</sup> year biology requirements</li> <li>- We currently do not have the capacity to teach service courses for other departments. We have several courses that have been</li> </ul>

## Sustainable Agriculture Second Annual Follow-Up Report

Actions(s) Required to Achieve this Goal	Led by	Proposed Start Date (M/YY)	Proposed Completion Date (M/YY)	Status	Description of Progress to Date/Reasons for Lack of Progress
					<p>popular for other departments, but due to only having 3.25 faculty members we do not have capacity to offer these courses.</p> <p><i>01/2026 – we have developed one cross-listed course with INDG and a field school course with SOCI that will be offered this May. We have also developed a cross-listed course with PHYS focused on agricultural technologies. We have courses that are very popular with CRIM and POLI students. We have taken the approach to make our AGRI courses available to others rather than develop courses that are only service courses.</i></p>
Conduct review of programs in Canada and U.S.A. to identify potential for transfer and articulation agreements	Rebecca Harbut	1/2024	12/2026	<i>Started but delayed</i>	<ol style="list-style-type: none"> <li>1. This has not occurred due to time constraints.</li> <li>2. Course transfer agreements signed with UFV, TRU, VIU, UBC, SFU, UNBC, and North Island College (2023-24)</li> </ol> <p><i>01/2026 – we are working with UFV on sharing courses for efficiency. Will be starting this review of other universities in May 2026 and will be exploring block transfer agreements with a focus on colleges that have 2 year programs in the USA.</i></p>
Expand course offering to include dual credit courses available to BC grade 11 and 12 students	Rebecca Harbut	9/2025	8/2027	<i>Started</i>	<ul style="list-style-type: none"> <li>- We have cross-listed courses on the books, however we do not have capacity to teach these courses.</li> </ul> <p><i>01/2026 – we have had interest from Chilliwack, Squamish and Richmond school district on developing dual credit offerings and we are striving to develop innovative ways to offer unique programing. Schools that are interested have an active school garden and are looking for integrated courses. This has been more difficult to clearly define and implement but provides an interesting opportunity that we continue to pursue.</i></p>
Conduct PD Days for BC High School Teachers on the integration of Sustainable Food Systems in the BC Curriculum	Rebecca Harbut	10/2023	Ongoing	<i>Started</i>	<ul style="list-style-type: none"> <li>- In the process of pursuing funding to support time release to develop PD courses and class materials with Richmond school district. Contingent on finding backfill capacity for teaching.</li> </ul>

## Sustainable Agriculture Second Annual Follow-Up Report

Actions(s) Required to Achieve this Goal	Led by	Proposed Start Date (M/YY)	Proposed Completion Date (M/YY)	Status	Description of Progress to Date/Reasons for Lack of Progress
					<i>01/2026 – have had several meetings and started discussions about PD offerings and curriculum development with Richmond School District. We hope to develop this programming starting in May when Rebecca H will have time available through a time release. We hope to have these available to the schools in 2027. Have had several high school classes come to the farm for various programming</i>

**GOAL 2:** Build Connections with industry and community partners.

Action(s) Required to Achieve this Goal	Led by	Proposed Start Date (M/YY)	Proposed Completion Date (M/YY)	Status	Description of Progress to Date/Reasons for Lack of Progress
Review of other university/college-based programs in Canada and U.S. to identify potential schools to have discussions with about articulation agreements	Rebecca Harbut	9/2024	9/2026	<i>Started</i>	Have not started due to time constraints.  <i>01/2026 – have started this process and will ramp up in May 2026 when Rebecca H will have some time through a time release. We are working with UFV on sharing courses for efficiency. Will be starting this review of other universities in May 2026 and will be exploring block transfer agreements with a focus on colleges that have 2 year programs in the USA.</i>
Work with BC Institute of Agrologists to have program recognized as an approved degree to facilitate alumni attaining membership. Support Sust Ag faculty in becoming registered Professional Agrologists (P.Ag.)	Mike Bomford	1/2023	12/2026	<i>Completed</i>	16/10/23 – meeting with BCIA to discuss recognition of program  Dr. Bomford is now a registered P.Ag and Dr. Harbut will be registered 2025.  New curriculum mapped to BCIA requirements for articling Agrologists

## Sustainable Agriculture Second Annual Follow-Up Report

Action(s) Required to Achieve this Goal	Led by	Proposed Start Date (M/YY)	Proposed Completion Date (M/YY)	Status	Description of Progress to Date/Reasons for Lack of Progress
Work with marketing to improve online presence as well as signage and presence at the KPU Farm through signage.	Mike Bomford	6/2022	9/2024	<i>Started but delayed</i>	<p>Some updates to website have occurred. We have had two external groups develop videos that our department has amplified through our social media and we have shared these assets with marketing. There remains no signage at the farm.</p> <p><i>01/2026 – waiting on signage to be completed and approved by the city. Expect this to be installed during summer of 2026.</i></p>
Develop outreach programs in collaboration with industry and community partners at the KPU Farm. These programs will focus on demonstrating production systems, fostering connections between industry components, and facilitating networking opportunities for existing students and recruiting new students from the industry.	Ben Alles	1/2024	8/2027	<i>Started</i>	<p>Andy Smith, the KPU Farm manager resigned from his position 10/23, so this work will be reallocated to the team with the new farm manager taking the lead after the 2024 field season is complete. Below are examples of previous industry events that we will continue to hold in 2024.</p> <p>22/6/23 – MLA tour of KPU Farm</p> <p>2/8/23 – Open House and Community Partners appreciation</p> <p>20/8/23 – booth at Richmond Garlic Festival</p> <p>20/9/23 – Organic BC Weed Management Field Day @ KPU Farm</p> <p>7/9/23 – All America Tour – breeders and seed companies toured the KPU Farm and learned about our program</p> <p>3-5/11/23 – BC Seed Gathering @ KPU Richmond , co-host with Farm Folk City Folk</p> <p>1/24 – Booth at Pacific Agriculture Show, Abbotsford</p> <p><i>01/2026 – we have continued to work with industry partners through our <a href="#">student research projects</a> and have begun to work with Organic BC to better collaborate. The KPU Farm has been working to gain GAP</i></p>

## Sustainable Agriculture Second Annual Follow-Up Report

Action(s) Required to Achieve this Goal	Led by	Proposed Start Date (M/YY)	Proposed Completion Date (M/YY)	Status	Description of Progress to Date/Reasons for Lack of Progress
					<p><i>(Good Agricultural Practices) Certification and in that process has held workshops for industry and students. In the coming years we are planning to work more intentionally with industry partners to offer training and research opportunities.</i></p> <p><i>Rebecca has recently been awarded a time-release that will allow her to focus on strengthening and building on our industry partnerships over the coming year.</i></p>
<p>Build connections with indigenous partners to foster indigenous learning and communication on the KPU Farm. Develop joint educational materials related to the KPU Farm at the Garden City Lands that can be shared with the public.</p>	<p>Alex Lyon (curriculum) Rebecca Harbut (TD Project)</p>	<p>8/2022</p>	<p>8/2027</p>	<p><i>Started</i></p>	<p>Rebecca Harbut was awarded a 3-year, \$300,000 grant from TD Bank to support the development of programming to communicate with the public. This grant includes sharing indigenous history of the site.</p> <p>Alex Lyon and Mike Bomford became co-applicants on an NSERC Sustainable Agriculture Alliance grant application led by a multi-university team including UBC and UFV. If awarded, this grant will support collaboration with the Rivershed Society of BC to conduct Indigenous food systems/habitat restoration projects at the KPU Farm and a network of sites.</p> <p>Curriculum - Alex Lyon worked with Jennifer Anaquod to develop course proposal for AGRI 1130: Indigenous Perspectives in Food Systems, which will be cross-listed with INDG. Course has been approved by SSCC and is ready to be offered in Spring 2025. INDG is currently in the process of identifying who will work with us to develop this new course.</p> <p><i>01/2026 – we have developed and delivered a cross-listed a course focused on Indigenous Perspectives on Food Systems. We have also been making progress on our relationship with Musqueam First Nation and</i></p>

## Sustainable Agriculture Second Annual Follow-Up Report

Action(s) Required to Achieve this Goal	Led by	Proposed Start Date (M/YY)	Proposed Completion Date (M/YY)	Status	Description of Progress to Date/Reasons for Lack of Progress
					<i>other partners on the development of an Indigenous Medicine Garden. This is expected to be installed the summer of 2026</i>

**GOAL 3:** Revise Program to provide more experiential learning throughout the program and ensure all required courses directly contribute to program outcomes.

Action(s) Required to Achieve this Goal	Led by	Proposed Start Date (M/YY)	Proposed Completion Date (M/YY)	Status	Description of Progress to Date/Reasons for Lack of Progress
Revise program competencies through consultation with advisory committee	Rebecca Harbut	1/2023	4/2023	<i>Completed</i>	
Engage in curriculum mapping process to inform appropriate program revisions	Rebecca Harbut	1/2023	8/2023	<i>Completed</i>	
Submit full program revision to relevant committees	Rebecca Harbut	9/2023	12/2023	<i>Completed</i>	Full program revision submitted and approved.

**GOAL 4:** Create opportunities for students to specialize and make components of the degree available to a broader audience through development of complimentary/laddering credentials.

## Sustainable Agriculture Second Annual Follow-Up Report

Action(s) Required to Achieve this Goal	Led by	Proposed Start Date (M/YY)	Proposed Completion Date (M/YY)	Status	Description of Progress to Date/Reasons for Lack of Progress
Engage in consultations with the Melville School of Business to explore the possibility of a track in business management and supply chain logistics	Rebecca	3/2023	8/2023	<i>Not started</i>	<p>This has not occurred, the tracks were not included as part of the program revision but we will continue to explore elective options for Sust Ag students</p> <p><i>01/2026- No longer pursuing a track option. Based on students feedback there was greater desire for flexibility rather than specific tracks. We continue to highlight business courses to take electives</i></p>
Engage in consultation with program advisory committee and students to identify opportunity for developing micro credentials and potential 2+2 format within the program	Rebecca, Mike, Alex	1/2024	8/2024	<i>Started but delayed</i>	<p>Exploring the possibility of a Sustainable Agriculture certificate that will ladder into the degree.</p> <p><i>01/2026 – currently working with Squamish First Nation to develop 2+2 certificate and this certificate will be available on the Richmond campus as well. We want this to be one credential that is flexible to meet the needs for different partners, so we are slowing down a little on this so that we can ensure the credential we have will be flexible. We are aiming to have the first offering of courses with Squamish First Nation in Sept. 2027.</i></p>

## Sustainable Agriculture Second Annual Follow-Up Report

**GOAL 5:** Increase staffing in department by 1 BCGEU staff member and 1 full time Faculty.

Action(s) Required to Achieve this Goal	Led by	Proposed Start Date (M/YY)	Proposed Completion Date (M/YY)	Status	Description of Progress to Date/Reasons for Lack of Progress
Conduct a review of faculty and staff daily work tasks to determine the activities that are carried out and the time dedicated to it to better understand the specific needs and improve efficiency	Mike Bomford	1/2023	12/2023	<i>Completed</i>	<p>Task not yet completed, but will be undertaken the summer to better document</p> <p><i>01/2026 – The addition of an Instructional Associate position in May 2023 has been a very big help in the workload on the faculty that involve the farm work. Having higher enrollment in our program has given us more capacity to get work done on the farm. This has alleviated some of the farm work, so this action is no longer needed as the allocation of farm work is more balanced. However, while this has resolved some of this issue, it has created a new challenge of needing more teaching time in order to support the number of students. Our faculty are still spending a lot of time on the farm, but it is now instructional time that is unaccounted for. For example, our Applied Organic Agriculture course series has a student capacity of 35 students. With increased enrolments, we are filling this course. This allows us to get a lot of the work done on the farm that faculty were previously doing, however a class of this size requires additional instructors. At the moment we are work-loaded at 1/3 of the course, but in reality, we are required to be engaged in teaching closer to the full course load to provide meaningful learning experiences for the students. We are working to better understand how to address these growing pains.</i></p>

**GOAL 6:** Increase reflective practices and indigenization throughout curriculum.

Action(s) Required to Achieve this Goal	Led by	Proposed Start Date (M/YY)	Proposed Completion Date (M/YY)	Status	Description of Progress to Date/Reasons for Lack of Progress
Consult with Indigenous partners at KPU to identify opportunities and develop strategies for better representation of Indigenous perspectives and issues in teaching and curriculum	Alex Lyon	8/2022	8/2023	<i>Completed</i>	<p>Have developed an Indigenous Perspectives in Food Systems course in partnership with Indigenous Studies. In Fall 2023 Alex implemented new Land Acknowledgement learning activity developed by Jennifer Anaquod, in AGRI 4298. Alex will share this with the department as an example that can be adapted to other courses.</p> <p>Sust Ag faculty &amp; staff have attended Indigenous events to learn and make connections, including the launch of the Indigenous Studies Department, the unveiling of <i>xé?el̓ KPU Pathway to Systemic Transformation</i>, a field tour with Sesimalot (Fern Gabriel), Language Instructor from the Kwantlen First Nation, and other events.</p> <p>Alex will notify Sust Ag department of relevant PD opportunities and events, as ways to continue building relationships.</p>
Consult with Indigenous partners at KPU and develop relationships beyond KPU to work towards Indigenization at the KPU Farm, including development of experiential land-based learning programs.	Alex Lyon	8/2022	8/2024	<i>Completed</i>	Our initial plans for new Indigenous land-based programs at the KPU Farm have been delayed due to the INDG faculty member we were working with left KPU. As we continue to develop new relationships with the Indigenous Studies program through our cross-listed course, we believe new opportunities and ideas will emerge for further Indigenization at the KPU farm.

## Sustainable Agriculture Second Annual Follow-Up Report

Action(s) Required to Achieve this Goal	Led by	Proposed Start Date (M/YY)	Proposed Completion Date (M/YY)	Status	Description of Progress to Date/Reasons for Lack of Progress
					<p>We are continuously developing approaches to integrate Indigenous knowledge in the for the Agroecosystem Series. In Spring 2023 Mike Bomford introduced a learning activity using Padlet to explore Indigenous histories and history of colonial impact on the land which is now the KPU Farm.</p> <p>We have hosted 3 KPU Wild Spaces events providing reflections on experiential learning for the KPU Community at the farm, on 3/29/2023, 9/14/2023, and 3/7/2024, and will continue these events.</p> <p><i>01/2026 – Alex L has had significant collaboration with Indigenous Studies at KPU and are now offering a cross-listed course.</i></p> <p><i>Rebecca H has been working on a collaboration with Musqueam First Nation on the development of a Medicine Garden at the KPU Farm and on a communications project on the site.</i></p>
<p>Conduct a review of course outcomes to ensure there are specific outcomes focused on Indigenous perspectives throughout the program.</p>	<p>Alex Lyon</p>	<p>9/2022</p>	<p>8/2024</p>	<p><i>Completed</i></p>	<p>This has not been started yet due to time constraints. Alex will start work this summer.</p> <p><i>01/2026 – This has been reviewed, however, we have revised how we are working through this. We are finding that simply reviewing outcomes and putting in learning outcomes is less effective than the slower work of weaving this into the way we teach. So, while we consider this action ‘completed’ it is an ongoing learning process.</i></p>
<p>Twice per year hold a learning and reflection session for department members to discuss and share insights on adapting Indigenous perspectives in our teaching and curriculum.</p>	<p>Alex Lyon</p>	<p>1/2023</p>	<p>8/2027</p>	<p><i>Started</i></p>	<p>Due to time constraints, we have taken the approach of sending representatives to Indigenous Studies events rather than hosting our own events. As Alex works on reviewing Indigenous-related learning objectives across the curriculum, she will organize department-wide reflection and discussion on teaching and curriculum.</p>

## Sustainable Agriculture Second Annual Follow-Up Report

Action(s) Required to Achieve this Goal	Led by	Proposed Start Date (M/YY)	Proposed Completion Date (M/YY)	Status	Description of Progress to Date/Reasons for Lack of Progress
					<p><i>01/2026 – have continued to work on indigenization of curriculum and courses. Alex has continued to work with INDG department and facilitating dialogue in our department. This ongoing engagement has been beneficial and we continue to explore new ways of teaching.</i></p> <p><i>We are excited about new collaborations with the Musqueam on experiential learning spaces at the KPU Farm which will be integrated into the program when complete.</i></p>
<p>Develop a strategy for the integration of e-portfolios in a systematic way throughout the curriculum.</p>	<p>Alex Lyon</p>	<p>6/2023</p>	<p>8/2027</p>	<p><i>Started</i></p>	<p>Alex participated in the KPU TLC E-Portfolio Champions program in Spring 2024 resulting in a proposed approach for integrating e-portfolios across the curriculum. Pilot e-portfolio activities will be initiated in selected courses in Summer and Fall 2024.</p> <p><i>01/2026 – at this point we have not formally integrated e-portfolios into the program but are beginning to integrate specific assignments in courses that will contribute to the program-wide e-portfolio. The include producing videos, reflection assignments, and photo logs. We will continue to build our capacity to use e-portfolios to ensure that it is easily adaptable to ensure continued use.</i></p>

# Kwantlen Polytechnic University

Department of Sustainable Agriculture

KPU Farm @ Garden City Lands

## 2025 Activity Report



City of Richmond

Department of Parks, Recreation, and  
Cultural Services Committee

February 24, 2026



# Introduction

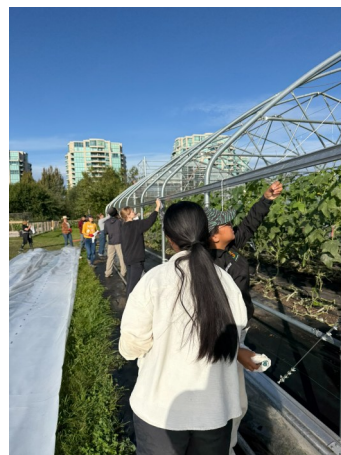


Kwantlen Polytechnic University has now completed eight growing seasons at the KPU Farm on the Garden City Lands. We have continued to expand our perennial plantings, maintain infrastructure and introduce new programs for the community. In 2025 substantial progress was made by the City staff in preparing the North field for agricultural production with importation of mineral soil and we began to establish the Food Forest.

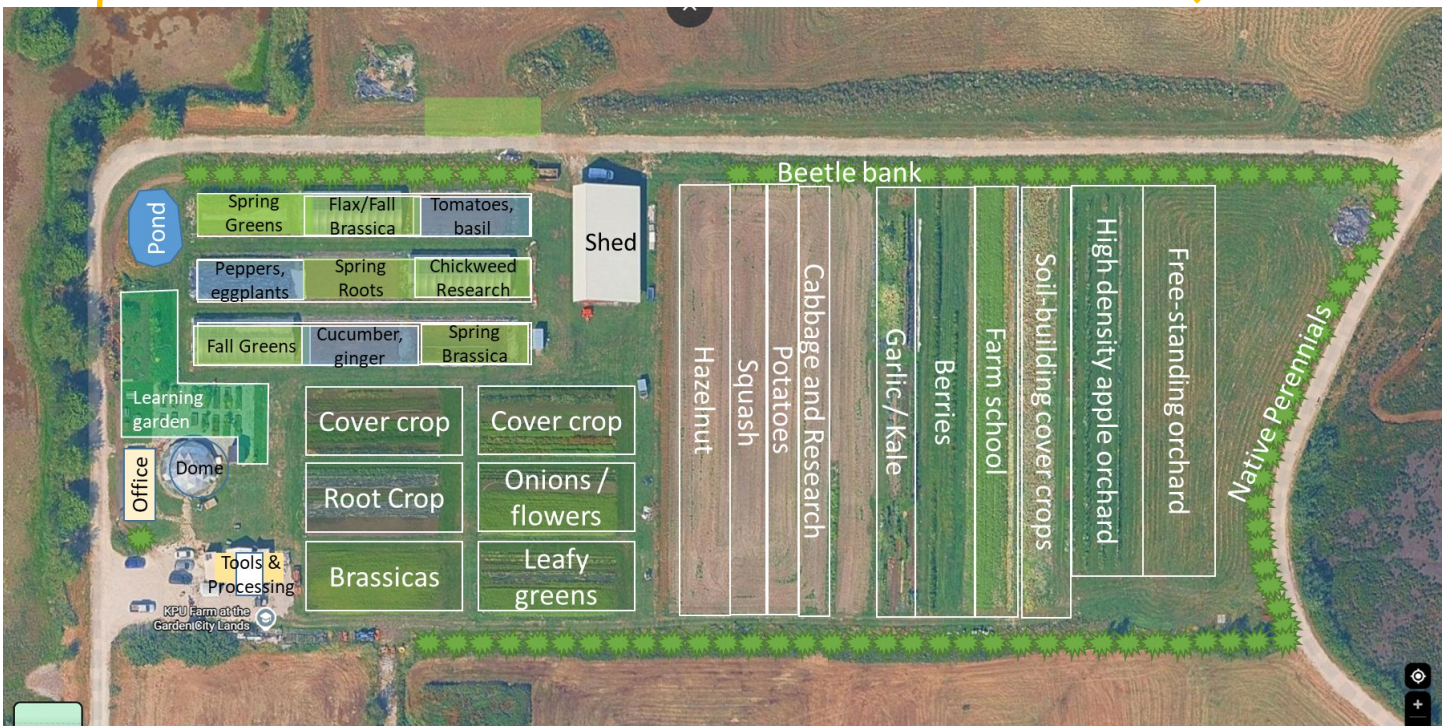
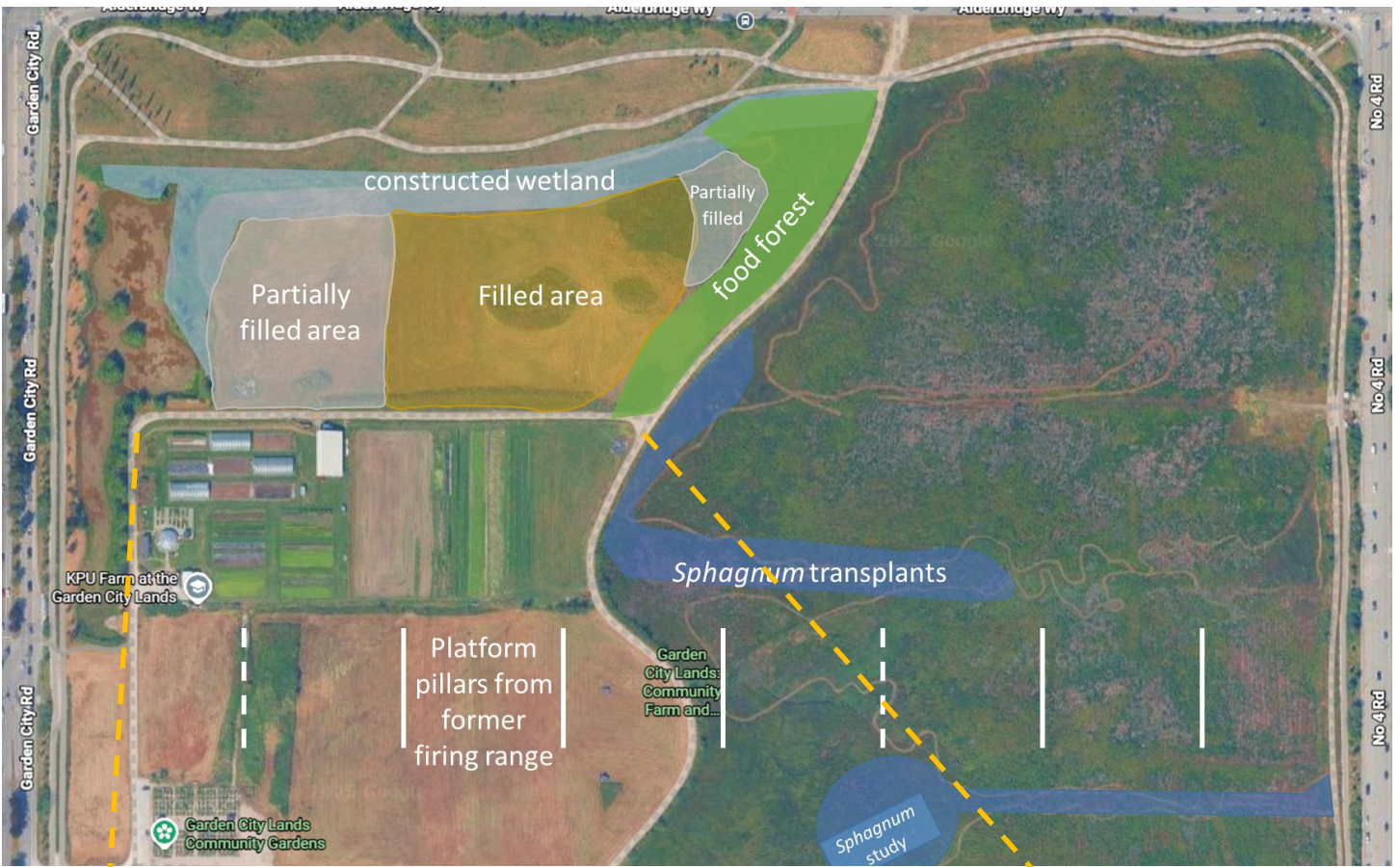
Highlights of 2025:

- In 2025 we harvested 15 metric tonnes of certified organic produce from the site, with a retail value of 95 thousand dollars.
- GAP (Good Agricultural Practices) Certified two crop groups; leafy greens and cucumbers. This allows the KPU Farm to sell produce to wholesale buyers which required GAP certification.
- Phase I of the food forest was completed involving the construction of a berm, and planting the first three sections of native edible perennials.
- Our volunteer program continues to thrive , offering opportunities for students and Richmond residents to build community, participate in events, and engage in crop production on the site.
- One of the high tunnels was re-skinned with new plastic to replace plastic that was degraded after 6 years of use.
- We had our largest class of first year students in 2025 and are seeing growth in our program.

We are grateful for the partnership with the City of Richmond that allows the KPU Farm to teach and demonstrate community-engaged sustainable agriculture.



# Farm Maps—2025



# Vancouver Island beggarticks (*Bidens amplissima*)

Vancouver Island beggarticks is a rare wetland annual plant listed as a species of special concern (Canada Species at Risk Act, Schedule 1).

This unique plant was first observed on the Garden City lands in August of 2022 and has also been found in different location across Richmond, primarily outside the dyke.

This plant spreads by seed and requires unique growing conditions, so the population density shifts from year to year. We are working to ensure this important species is able to persist on the Garden City Lands by fostering suitable habitat and monitoring populations.

The map to the right indicates areas where plants have been identified in 2025.



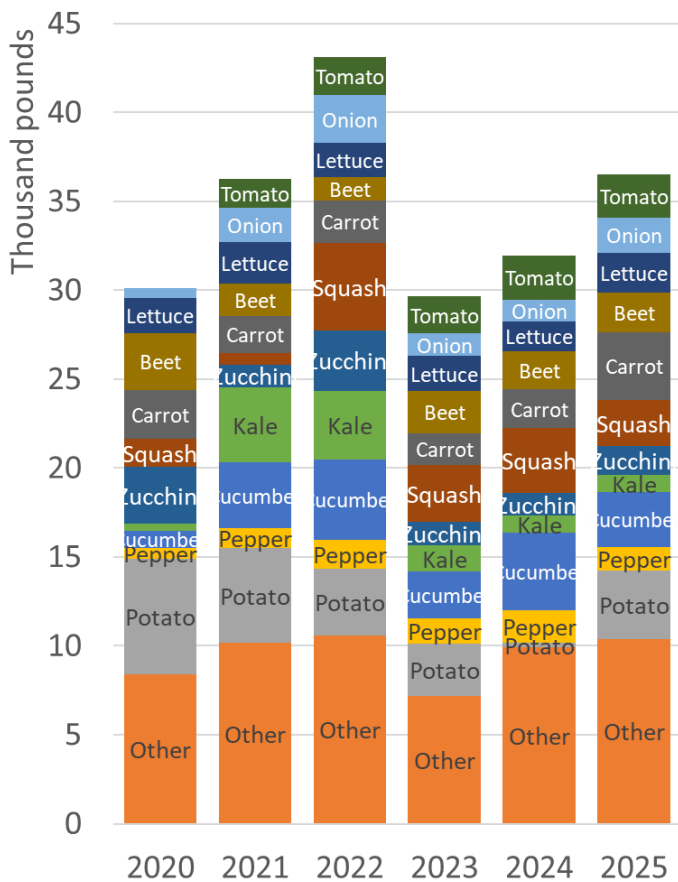
Individual observations archived in iNaturalist are shown for 2025 (left) and 2023-25 (right)

# Crop Production

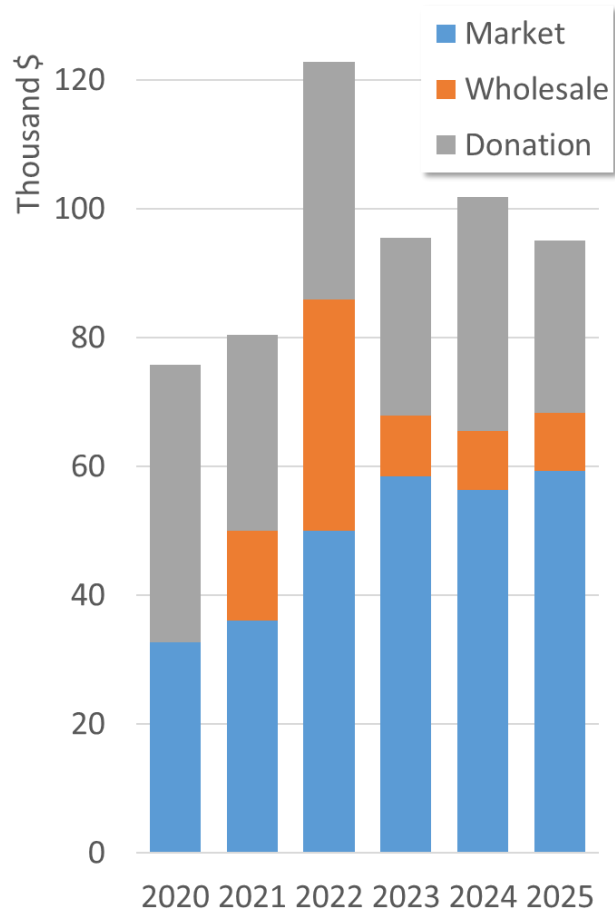
The KPU Farm produced over 36 thousand pounds (16.5 metric tonnes) of certified organic produce and flowers in 2025, with a retail value of almost \$95,000. The farm continues to produce a diversity of crops with more than 40 different crops grown. The 10 most productive are shown by the coloured slices in the Crop Yield bar graph below.

The harvested produce was either sold or donated, as shown in the Crop Value bar graph below. The Richmond Food Bank accepted almost 17 thousand dollars worth of produce donations in 2025. In addition to donations to the food bank, 10 thousand dollars worth of produce was provided to the community through the community fridge and the student food security program. Sales in 2025 totaled \$78,142, with approximately 59 thousand dollars in direct sales at the Kwantlen Farmers' Market, and approximately nine thousand dollars from wholesale distributors that prioritize local organic produce, including Discovery Organics and Spud. This year, the KPU Farm certified two crop categories with GAP (Good Agricultural Practices); leafy green and cucumbers. This certification became a requirement of several wholesale buyers in 2022 which resulted in a significant drop in wholesales. These are the first two crops to be GAP certified with additional crops to be certified in the coming years.

## Crop Yield



## Crop Value



Crop yield by weight (left) and dollar value (right) from 2020 to 2025. Yield bars are divided to show 10 most productive crops. Value bars are divided to show distribution between direct-market sales, wholesale sales, and donations.

Small farm production types at the KPU Farm include movable high tunnels, market garden plots and field plantings. High tunnels facilitate in-ground production with added protection creating warmer environments. These tunnels allow for early season spring production and late season fall production as well as warm season crops throughout the summer (top image: late fall production of greens in 20 m beds).

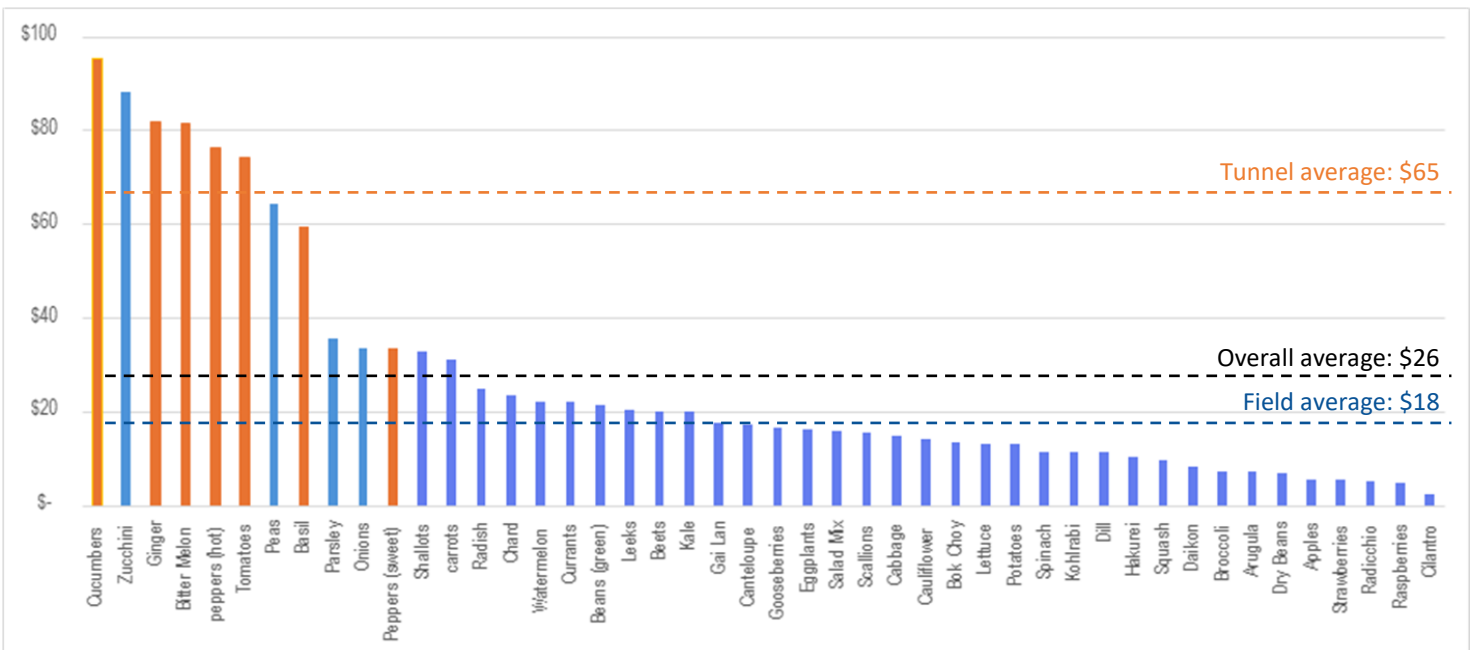
Market gardens are diverse plantings which require intense management and are high producing fields. These market gardens have many types of annual vegetables and cut flowers (middle image shows zucchini, onion and shallot planting, 30 m beds).

Field crop zones (bottom image, 90 m beds) provide large spaces for crops that require lower labour and increased space and are positioned further from the entrance hub in the southwest corner of the farm.



Below: Farm income per bed meter by crop variety for 2025. Orange and blue bars denote warm season high tunnel and outdoor field beds, respectively. Orange and blue dashed lines show the average income per bed meter for high tunnel and outdoor field beds, respectively. Income does not include value of donated produce.

Sales (\$) per bed meter



# Perennial Plantings

## New Fruit Trees

In March 2025, the orchard was expanded with the planting of several types of free-standing semi-dwarf fruit trees including; persimmons, pear, plum, apples, and hazelnuts. These trees will be evaluated for suitability of production in Richmond.

## First Apple Harvest

2025 marked the first apple harvest from the high density trellised apple trees that were planted in 2023. Student monitored apples as they approached maturity and we successfully harvested from 4 different varieties? Farm Fest visitors were able to participate in this first harvest and press the fruit to make apple cider. Apples were also sold at the Kwantlen Farmers Market, and consumed by students.

## Food Forest Planting

The Food Forest is a perennial planting composed entirely of native species and, once complete, will include over 60 different plants. The project spans a 220 × 10 meter site, with three of the ten sections planted as of 2025. Interpretive signage is currently being developed to support public education and encourage meaningful community engagement. KPU students and community volunteers are actively involved in the planning, planting, and maintenance of the site, fostering hands-on learning and stewardship. The Food Forest is intended to serve as a hub for community learning about the many benefits of native plants, while also providing important habitat and



Left: South-edge view of the Food Forest, Middle: students planning food forest, right: first apple harvest.

# Student Research

KPU Sustainable Agriculture students completed six research projects at the Garden City Lands in 2025.

Student	Project	Key result
Rue Badanic	Baseline insect survey at Garden City Lands Miyawaki Forest	Pollinator abundance increased in a young Miyawaki forest.
Anupjot Badesha	Effects of compost, biochar, and Gurbani on bean vigour over two generations	Compost increases bush bean vigor and survival; offspring of Gurbani exposed plants have stronger response to temperature stress.
Shannon Campbell	Effects of biodegradable mulch on dryland rice	Biodegradable mulches suppress weeds in dryland rice.
Rachel Cassidy	Do black plastic mulch and <i>Metarhizium brunneum</i> interact to protect beets from wireworm feeding?	Beet root weight increased with the application of black plastic mulch and <i>Metarhizium brunneum</i> .
Elyse Farmer	Effect of soil solarization on chickweed ( <i>Stellaria media</i> ) seed viability across burial depths	Solarization reduces chickweed seed survival near soil surface.
Elise Ryan	Intercropping drying beans with oyster mushrooms and its effects on bean yield	Intercropping with oyster mushroom does not increase bean yield.

Project results were presented at the annual student research symposium, jointly presented by KPU's Departments of Sustainable Agriculture and Physics, and at a KPU research showcase. Student posters and papers are available at [www.kpu.ca/agriculture/student-research](http://www.kpu.ca/agriculture/student-research).

Images left to right: solarized and non-solarized plots, Elyse R. sharing mushroom research with class, harvesting rice research plots, Miyawaki forest at the Garden City Lands (established by Garden City Conservation Society in 2024) where insect survey was carried out.



# Farm Fest and Sunset Snacks

## Farm Fest

Richmond Farm Fest took place on September 7, 2025, at the KPU Farm and Garden City Lands and welcomed over 3000 participants. This free, family-friendly festival featured activities such as a farmers market, live culinary demonstrations, interactive agricultural and garden displays, kid-friendly zones, a plant labyrinth, and hay wagon tours, engaging visitors of all ages in learning about sustainable food and farming practices. Community partners, including small businesses and local NGOs, were invited to help educate and connect with the public. A group of community and student volunteers supported event delivery throughout the day, helping ensure activities ran smoothly and enhancing the overall visitor experience.



Farm Fest visitors enjoying a guided hay wagon tour

## Sunset Snacks

On August 8, the KPU Farm hosted Sunset Snacks, welcoming over 40 youth for an evening of hands-on activities and social connection. Hosted in collaboration with the City of Richmond and in partnership with Vancouver Coastal Health, participants took part in bouquet making, a mini harvest, and story telling about native strawberry plants. Food was provided at the table, fostering community connection as youth gathered, shared, and socialized. The event offered a relaxed, inclusive space for participants to learn about growing food, sustainability, and healthy eating while enjoying time outdoors with peers.



Sunset Snacks event: flowers harvested from the farm by volunteers for the bouquet-making workshop (left), and participants enjoying a story about native strawberry plants (right).

# Other Events

## KPU Farm Open House

On July 24, 2025, the Sustainable Agriculture Department hosted its annual Open House at the KPU Farm, welcoming community members, partners, alumni, and students. The event provided an opportunity to share updates on current projects, express appreciation, and strengthen relationships with collaborators. Attendees included representatives from government, the non-profit sector, the agricultural industry, and education. The day featured knowledge sharing, community building, and refreshments prepared by students and volunteers, making it a successful and engaging event for all.

## Earth Day, Doors Open, and Flax Harvest Party

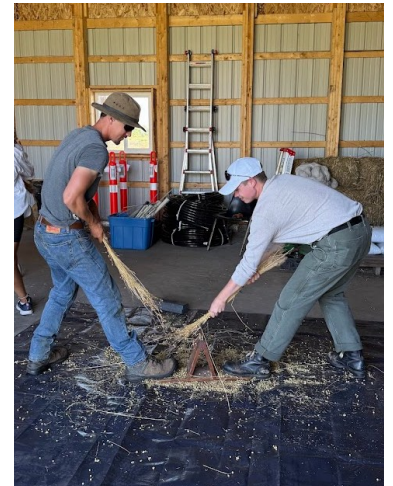
On April 26, the KPU Farm held an Earth Day Food Forest Event, where students and community members were invited to come learn about native plant species and see the site where the new Food Forest would be planted. Visitors helped the farm pot-up hundreds of native strawberry seedlings that would later be planted in the community Food Forest.

On June 7, 2025, the KPU Farm participated in Doors Open, offering hands-on activities such as button-making and eco-print card making, along with tasting farm tours.

On July 12, the KPU Farm hosted a Flax Harvest Party and Sustainable Fibers Workshop, where visitors learned to harvest and process flax for fiber and seed. Participants explored tools and techniques for turning flax into linen, gaining hands-on experience with sustainable textile practices and traditional farming methods.



Students harvesting flowers for the display at the Open House



Community members helping pot-up strawberry seedlings (right), bundles of harvested flax laying out to dry (middle), and volunteers harvesting flax seed (left).

# Learning Garden & Community Outreach

## Public School Visits

In 2025, the KPU Farm welcomed several school groups to our Learning Garden for hands-on experiences with plants and sustainable agriculture. Frost Road Elementary students visited on May 30 to help build trellises and deepen their understanding of seeds and plant families. On September 24, two classes from Britannia Elementary planted seeds, harvested flowers, and stomped beans to collect seeds. Station Stretch School students joined on October 2 for a bouquet harvesting and making activity to take home, and the following day, John Knox School students explored the foundations of sustainable agriculture while creating bouquets and harvesting and cooking a meal onsite for their class.



Frost Road Elementary School students working together in the Learning Garden to build bean trellises

## Community Volunteer Program

Now in its fourth year, the KPU Farm Volunteer Program ran again from March to November and welcomed a variety of participants from different backgrounds. Many participants were newcomers to Canada, creating a diverse group eager to share their agricultural knowledge and experiences. Volunteers supported community learning about food systems by attending events, helped maintain a wide variety of flowers, vegetables, fruits, and herbs, in the Learning Garden, and assisted with harvesting produce for the Kwantlen Street Market and the Richmond Food Bank. All of the produce grown in the Learning Garden was either used for community workshops or donated to the volunteers.



# Community Engagement

## Farmers Market

The Kwantlen Farmers' Market remains a critical part of our program, running 12-4pm every Tuesday from April to November. The market is located in Minoru Plaza in the heart of many other important community amenities.

The Kwantlen Farmers' Market is registered with the BC Association of Farmers' Markets. It is the only market in Richmond that is registered this way, which offers the community many benefits. One such benefit is that as a vendor, the KPU Farm has partnered with the BC Farmers Market Nutrition Program to provide coupons to lower-income families, pregnant people, and seniors.



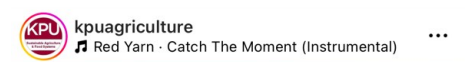
## Twilight Tours

The tours have been a longstanding feature of the Farm and continued in 2025. Held on the second Tuesday of each month between May and September, covering themes such as Bog Vegetation, Flavours of the Farm, Fruit Production, Native Perennials, and Organic Farming. The tours welcomed visitors from the Community Garden at the Garden City Lands and beyond. Attendance has been lower at the Twilight Tours compared to the many other community-focused events we host, prompting us to reflect on the best way forward for 2026.



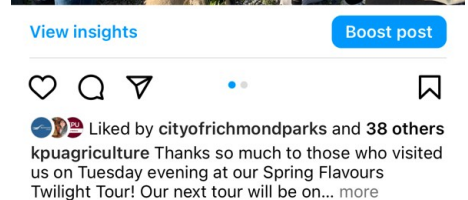
## Social Media

We have utilized social media extensively to share with the community about what is going on at the farm. Our students and staff contribute to the stories that we tell. This has been an important tool to let people know what we are about and what we are doing on the farm! Check us out at KPUAgriculture on Instagram and Facebook.



## Community Fridge & Richmond Food Bank

Fresh food donations with a value of over \$24,000 was donated to the Richmond Food bank and other food insecurity programs. The Sustainable Agriculture Student Association has volunteered their time to provide produce to the community fridge, which provides low barrier access to fresh produce to the community as well as the food insecurity program with the Kwantlen Student Association.



# Farm Expansion and Next Steps



## North Field Expansion

KPU continues to collaborate with the City of Richmond in the development of the North Field. As with the south field, the peat will be buried beneath clean mineral soil with drains positioned above the peat. This strategy is intended to preserve the sequestered carbon in both the native peat and the imported peat that was added in 2022, avoiding substantial greenhouse gas emissions. In 2025 a significant portion of the North Field has been brought up to final grade. A small section adjacent to the Food Forest will be filled with soil stockpiled on site when the conditions allow. When this section is filled, drain tile can be installed and production can begin.

The constructed wetland is continuous with the pond on the site and will ensure that there is area on the Garden City Lands with suitable habitat for Vancouver Island Beggarticks and other riparian species. This will also allow space for water to accumulate in heavy rain events and allow fields to drain.



Top image: Northeast corner of the north field that is filled to final grade.

Middle Image: Western edge of the filled area, photo shows drop to partially filled area.

Bottom image: Northern edge of filled area, lower elevation area is constructed wetland.



REPORT: Sustainable Agriculture Second Annual Follow-Up Report

**Instructions for Reviewers**

Your assessment should ensure that progress on the Goals and Planned Actions is clearly articulated. If no progress has occurred on a Goal and/or Planned Action, please ensure that a clear rationale has been provided.

<p><b>OVERALL ASSESSMENT:</b>  <i>Please provide a brief assessment of the Annual Follow-Up Report under review and an overall recommendation.</i></p> <p><b>Reviewer #1:</b> Really impressed with the work that Sustainable Agriculture has done to meet their goals. Work done has been presented in a clear and detailed manner. For sections where the work is still in progress and/or changed, the rationale is clearly provided. Minor formatting edit needed (see below). Well done!</p> <p><b>Reviewer #2:</b> Good report with clear documentation of completed work and frequent updates throughout. It's exciting to see the faculty's innovation enhancing the program.</p> <p><b>The Report (select the box that corresponds to your recommendation):</b></p> <p><input checked="" type="checkbox"/> Reviewer #1: Recommend for approval by the SSCPR as is</p> <p><input checked="" type="checkbox"/> Reviewer #2: Recommend for approval by the SSCPR pending suggested actions (see below)</p> <p><input type="checkbox"/> Recommend for rejection by the SSCPR</p>
---

**MAJOR ISSUES AND SUGGESTED ACTIONS:**

Complete this section ONLY if you have identified the following major issues with the Annual Follow-Up:

- a) Progress to date is unclear.
- b) No clear rationale has been provided for why no progress has occurred.

Issue (page #)	Suggested Action	Program's Response
Goal 1 point 4	01/2026- Signage is in process. There has been progress on the signage front and there has been increased online marketing.  The signage makes sense. But the marketing is vague, it needs to be clear.	

**MINOR EDITS (Spelling, syntax, word choice and other mechanical issues).**

Please list corresponding page numbers. Minor edits are NOT discussed at the SSCPR meeting. Add or remove rows as needed.

Minor Edits (page #)
In several sections you speak about cross-listed courses. Could you please list the exact course (Goal 1, action 5, Goal 2 action 5, Goal 6 action 2)
Pg5. Formatting edit needed to expand the row. Looks like the text cuts on slightly on the explanation for no longer pursuing a track option.
In several sections you speak about adding signage to the farm. In Goal 2 action 3 you mention summer of 2026. Can you please make it consistent throughout. (eg. Goal 1 action 2)
Goal 2 action 2: can you please add the date for the new curriculum map

**SENATE**

**Agenda Number: 6.1**

**Meeting Date: April 1, 2026**

**Presenter(s): Fergal Callaghan**

---

**AGENDA TITLE: INCLUSION OF LIBRARIANS ON EXTERNAL REVIEW TEAMS**

**ACTION REQUESTED:** Discussion

---

**Context and Background**

Purpose: To gather SSCPR members' views on whether librarians could be considered eligible internal members to serve on External Review Teams (ERTs).

Issue/Background: We continue to face challenges in recruiting internal faculty members to serve on ERTs. The primary role of the KPU faculty member on an ERT is to provide context about the KPU environment; they are not required to write the external review report, though they may offer input if they wish. Librarians, who are KPU faculty members, and active participants on the Senate Standing Committee on Program Review, work closely with programs and support the process during the external review phase when they meet with the External Review Team to provide context on library resources, research support, and program specific library needs.

Additional information: Per Program Review Guide 5 (External Review):

The internal candidates should:

- come from a program other than the program under review;
  - have an appropriate level of academic, experiential, and/or discipline/sector expertise for the program under review;
  - the internal candidates do not need to be familiar with the field under review; they are on the team to provide information about KPU and to contribute to the interviews by the external review team.
- 

**Submitted by**

Melike Kinik-Dicleli, Manager of Quality Assurance, Office of Planning & Accountability

**Date submitted**

March 20, 2026

---

---

---

**SENATE**

**Agenda Number: 7.1**

**Meeting Date: April 1, 2026**

**Presenter(s): Melike Kinik-Dicleli**

---

**AGENDA TITLE: MANAGER’S REPORT ON STATUS OF PROGRAM REVIEWS**

**ACTION REQUESTED:** Information

**RECOMMENDED RESOLUTION:** N/A

---

**COMMITTEE REPORT**

For Secretariat Use Only

---

**Context and Background**

There are 37 programs that are at various stages in the program review process.

<i>Phases</i>	<i>Number of programs</i>
Self-Study	19
External Review	8
Quality Assurance Plan	1
Annual Follow-Up Reporting	9
Total	37

**Attachments**

Manager’s Report\_Status of Program Reviews\_Details for April 1, 2026 SSCPR Meeting

---

**Submitted by**

Melike Kinik-Dicleli, Manager of Quality Assurance, Office of Planning & Accountability

**Date submitted**

March 31, 2026

Faculty	Program	Self-Study			External Review		QA Plan	Annual Follow-up		Progress Update The table includes only the reviews in progress.
		Planning Began	Data Collection Concluded	Report Approved	Date of Site Visit	Report Received	QA Plan Approved	1st Report Approved	2nd Report Approved	
ACP	English Upgrading	Dec-18 re-start: Sep-21	Admin Data: Feb-19 Admin Data: April-22 Survey Data: Nov-22	Jun-25	January 26/27, 2026					The external review report is due on <b>February 28, 2026</b> . However, a delay is likely because one of the reviewers has been hospitalized since the day following the review. The report is expected by April 10, 2026.
	English Language Studies	Sep-25	Admin Data: Survey Data:							Kick-off meeting took place on <b>September 15</b> . Program attended <b>September 19</b> Curriculum Review Workshop. Surveys are being drafted.
	Employment and Community Studies	Nov-25	Admin Data: Survey Data:							Kick-off meeting was on <b>December 5</b> . Program started the process in <b>January 2026</b> . <b>Surveys are being conducted</b> .
Arts	Asian Studies	Oct-22	Admin Data: April-23 Survey Data: April-23	Sep-23	Feb 28/29, 2024	Apr-24	Sep-24	Nov-25		Second annual follow-up report is due in <b>October 2026</b> .
	Criminology	Jan-2019 re-start: Oct-22	Admin Data: Feb-19 Revised Admin Data: Feb-20 Survey Data: May-20 Survey&Admin Data: Jun-23	Nov-23	June 24/25, 2024	Jul-24	Jun-25			First annual follow-up is due in <b>September 2026</b> .
	Fine Arts	Dec-23	Survey Data: May-23 Admin Data: May-23	Jan-24	Sep 26, 2024	Dec-24	Oct-25			First annual follow-up report is due in <b>October 2026</b> .
	General Studies	Sep-25	Admin Data: Dec-25 Alumni Survey Data:							Kick-off meeting took place on <b>September 15</b> . Program is working on Chapters 1 and 2. Alumni survey is being conducted.
	Geography	Feb-22	Admin Data: Dec-22 Survey Data: Dec-22	Jun-23	Nov 30, 2023	Feb-24	Oct-24	Nov-25		Second annual follow-up report is due in <b>October 2026</b> .
	Indigenous Community Justice	Sep-24 re-start: Sep 25	Admin Data: Survey Data:							Program attended the <b>September 19</b> Curriculum Review Workshop. Surveys are being conducted.
	Language & Culture	Dec-21	Admin Data: May-22 Survey Data: May-22	Nov-22	Mar 8 & 9, 2023	Apr-23	Sep-23	Oct-24		Second annual follow-up report was due in <b>October 2025</b> .
	Philosophy	Sep-25	Admin Data: Survey Data:							Kick-off meeting took place on <b>September 15</b> . Program attended <b>September 19</b> Curriculum Review Workshop and received draft surveys on <b>October 3</b> .
	Psychology	Sep-25	Admin Data: Survey Data:							Surveys were launched on <b>February 23, 2026</b> .
	Policy Studies	Sep-24	Admin Data: June-25 Survey Data: June-25							Program received survey reports and administrative data report in <b>June 2025</b> . SSR is likely to be on the agenda for the <b>April 2026</b> meeting.
	Sociology	Dec-24 restart: Oct-25	Admin Data: Survey Data: January-25 (except discipline survey)							Faculty, alumni, and student survey results were delivered to the program in <b>January 2026</b> . The discipline/sector survey is currently live.
Business	Accounting Post-bac	Jan-26	Admin Data: Survey Data:							The first draft of the surveys is sent to the program.
	Economics	Oct-22	Survey Data: Jun-23 Admin Data: Jun-23	May-24	Dec 3 & 4, 2024	Apr-25	Nov-25			First annual follow-up is due in <b>November 2026</b> .

Faculty	Program	Self-Study			External Review		QA Plan	Annual Follow-up		Progress Update The table includes only the reviews in progress.
		Planning Began	Data Collection Concluded	Report Approved	Date of Site Visit	Report Received	QA Plan Approved	1st Report Approved	2nd Report Approved	
	Entrepreneurial Leadership	Nov-23	Admin Data: Sep-24 Survey Data: Sep-24	Oct-25	May 6 & 7, 2026					External review is on May 6 & 7, 2026.
	Human Resources Management Post-bac	Dec-24	Admin Data: Jan-25 Survey Data: Jan-25							Program completed Chapters 1 and 2 and currently working on Chapters 3-6.
	Human Resources Management	Jan-26	Admin Data: Survey Data:							Draft surveys were sent to program on <b>January 26, 2026</b> .
	Marketing	Sep-23	Admin Data: Jan-23 Survey Data: Feb-24	Jun-24	Nov 25 & 26, 2024	Feb-25	Oct-25			First annual follow-up is due in <b>October 2026</b> .
	Operations and Supply Chain Management	Jun-23	Admin Data: April-24 Survey Data: Mar-24	Feb-25	Mar 11, 2026					External Review Report is due on <b>April 15, 2026</b> .
	Public Relations	Jan-26	Admin Data: Survey Data:							Kick-off meeting was on <b>January 16, 2026</b> . Surveys will be launched early fall.
Design	Fashion Marketing	Jan-26	Admin Data: Survey Data:							Kick-off meeting was on <b>January 16, 2026</b> . Surveys are launched.
	Graphic Design for Marketing	Sep-24	Admin Data: Apr-25 Survey Data: Apr-25	Mar-26	April 15 & 16, 2026					External Review is on <b>April 15 &amp; 16, 2026</b> .
	Interior Design	Jan-26	Admin Data: Survey Data:							Kick-off meeting was on <b>January 16, 2026</b> . Survey are launched.
	Technical Apparel Design	Sep-25	Admin Data: Survey Data:							Kick-off meeting took place on <b>September 18, 2025</b> . Surveys will be launched in the fall.
Health	Graduate Nurse International Education Re-Entry	Sep-24	Admin Data: Apr-25 Survey Data: Apr-25							External review planning has started. Awaiting confirmation from the program regarding the external review date.
	Nursing	Dec-23	Admin Data: May-24 Survey Data: May 24 (student survey: June-24)	Jun-25	Dec 10, 2025	Feb-26				The external review report contains recommendations where additional explanation from the reviewers is required.
	Nursing-AE	Dec-23	Admin Data: Oct-24 Survey Data: Oct-24	Jan-26						Waiting to receive the final version of the report to start external review planning.
	Traditional Chinese Medicine - Acupuncture	Dec-23	Admin Data: Dec-24 Survey Data: Dec-24							Self-study report was due in <b>October 2025</b> . The report is delayed.
	Computer Aided Design and Drafting	Jan-24	Admin Data: July-24 Survey Data: July-24							The self study report is now past its due date. Expected submission date is <b>March 2</b> .
	Engineering	Dec-24	Admin Data: April-25 Survey Data: April-25							The report was expected by <b>mid-December</b> . It is delayed.
	Health Science	Sep-24	Admin Data: Mar-25 Survey Data: Mar-25	Oct-25	Mar 9, 2026					External review is on <b>March 9, 2026</b> .
	Horticulture Technology Diploma	Nov-21	Survey Data Hort Tech: Mar-23 Admin Data: Sep-23	Feb-25	Nov 3, 2025					Program is working on the quality assurance plan.
	Physics for Modern Technology	May-21	Admin Data: Nov-21 Survey data: Feb-22	Jun-22	Nov 30/Dec 1, 22	Jan-23	Sep-23	Oct-24	Nov-25	Third annual follow-up report is due in <b>November 2026</b> .
	Plant Health	Jan-26	Admin Data: Survey Data:							Program attended the January 30 Curriculum Review Workshop.

Faculty	Program	Self-Study			External Review		QA Plan	Annual Follow-up		Progress Update The table includes only the reviews in progress.
		Planning Began	Data Collection Concluded	Report Approved	Date of Site Visit	Report Received	QA Plan Approved	1st Report Approved	2nd Report Approved	
	Sustainable Agriculture	Oct-19	Admin Data: Nov-19 Revised Admin Data: Feb-21 Survey Data: Student: Aug-20 Faculty & Alumni: Jan-21 Discipline/sector: Feb-21	Sep-21	Mar 7/9, 2022	Apr-22	Nov-22	May-24		Second annual follow-up report is in.