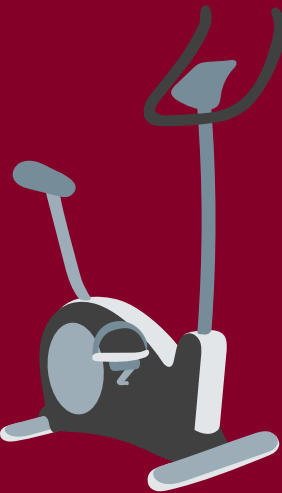


KPU’s Faculty of Trades & Technology invites support for our



4th Annual 24 hr Bike-A-Thon for Men’s Mental Health

Nov 4, 11am to Nov 5, 11am | KPU Tech

5500 180 Street, Cloverdale

Happening in the heart of our KPU Tech campus, the Bike-a-thon will feature round-the-clock music, entertainment, workshops, networking, refreshments, and—most importantly—will open up conversations about mental health among KPU students, faculty, staff, and community members.

“Ask what the top dangers of construction work are, and you’ll get the same answers almost every time: falls, electrocution, caught-ins and struck-bys. Yet more construction workers die from suicide each year than every other workplace-related fatality combined. In fact, the construction industry has the highest suicide rate of any profession.”

— Jill Fleming, EHS Today¹

For a full day, cyclists from KPU and our community partner organizations will keep our pedals moving in support of Movember Canada, which shines a light on men’s mental health and suicide prevention, encouraging us to practice checking in on people who may be struggling.

¹<https://www.ehstoday.com/construction/article/21171410/the-biggest-danger-in-construction-work-is-poor-mental-health>

Presenting Sponsor	Industry Sponsor	Community Sponsor	Food & Beverage Sponsor
\$5000	\$2500	\$1000	IN KIND
× 1	× 4	× 24	1 PER CATEGORY
Show your organization’s commitment to opening and sustaining conversations about Men’s Mental Health — not just in Movember, but all year round!	Host an entertaining, educational, and engaging activation on-site, highlighting your organization’s commitment to mental health initiatives!	Put your organization in the spotlight for 1 hour of this 24-hour event as the named sponsor of that hour’s riders!	Whether it be sustenance before their ride, or a reward after it’s complete, we welcome donations of food and drinks to keep our riders fueled up!
Logo on all print and digital event collateral	✓		
Company profile on event website	✓		
Speaking opportunity	✓		
10×10’ event activation space	✓	✓	
Logo on event website	✓	✓	✓
Social media recognition	✓ × 3	✓ × 2	✓ × 1
Earlybird registration to ride in the bike-a-thon	✓	✓	✓

For inquiries about the Bike-a-Thon, please contact community.engagement@kpu.ca or see kpu.ca/bikeathon for details.

