



KWANTLEN
POLYTECHNIC
UNIVERSITY




SUPPORTIVE MENTORS



SKILL-BUILDING ACTIVITIES



KPU Camps Parent Guide

 July - August 2026

 Ages 10 - 17

 Surrey / Langley / Richmond / Cloverdale



kpu.ca/camps

REGISTRATION

Public Registration
Starts March 6, 2026



Table of Contents

1. Introduction, Welcome & Territorial Acknowledgement
2. Registration and Cancellation Info
3. Faculty Intro
4. Check-In, Check-Out
5. Prepare for Camp
6. Behavior Expectations
7. Illness Disclaimer
8. Emergency Procedures
9. Ready to Register

SURREY

12666 72 AVENUE
SURREY, B.C. V3W 2M8

LANGLEY

20901 LANGLEY BYPASS
LANGLEY, B.C. V3A 8G9

RICHMOND

8771 LANSDOWNE ROAD
RICHMOND, B.C. V6X 3V8

CLOVERDALE TECH

5500, 180 STREET
SURREY, B.C. V3S 6R1



Welcome to KPU Youth Summer Camps

We are pleased to welcome your child to KPU Youth Summer Camps, offered through Kwantlen Polytechnic University's Continuing and Professional Studies (CPS) department. Whether your Camper is joining us for the first time or returning for another summer, we are excited to provide a meaningful and engaging experience on campus.

KPU Youth Summer Camps are designed to go beyond traditional summer activities. Each camp introduces campers to real-world skills through hands-on learning, creative problem-solving, and interactive experiences. Throughout the week, Campers will explore new ideas, work collaboratively, and build confidence as they learn by doing—just like students do at the university level, in an age-appropriate and supportive environment.

Your Camper's days will include a balance of structured activities, exploration, and fun, with opportunities to develop practical skills, think critically, and express creativity. Our camps draw inspiration from real industries and career pathways, helping Campers connect what they are learning to the world around them.

Our instructors and camp staff are caring professionals with experience in education and their respective fields. They are committed to creating a safe, inclusive, and encouraging environment where campers feel supported to try new things, ask questions, and grow.

Camp Contact Info

Summer Camp Coordinator: Glen Pidgorny

Email: CPS.Summercamps@kpu.ca

Phone: 604.598.5263

Office Hours: 8:30am – 4:00pm



Territorial Acknowledgement

We at Kwantlen Polytechnic University respectfully acknowledge that we live, work and study in a region that overlaps with the unceded traditional and ancestral First Nations territories of the xwməθkwəy̓ə m (Musqueam), qí cá y̓ (Katzie), SEMYOME (Semiahmoo), scə wəθən (Tsawwassen), qiqéyt (Qayqayt) and kwikwəłə m (Kwkwetlem); and with the lands of the qw̓ α:n̓ ə́ n̓ (Kwantlen) First Nation, which gifted its name to this university.

In the cause of reconciliation, we recognize our commitment to address and reduce ongoing systemic colonialism, oppression and racism that Indigenous Peoples continue to experience.

hə́n̓qəmiṇə́m̓ is the Downriver dialect of the broader language Halkomelem, one of the Coast Salish or Salish family of languages in BC.



We encourage you to click on the image (QR code) to learn more and support Indigenous language revitalization efforts.

Registration & Cancellation Info

Online Registration

- > Registration and account creation must be completed under the child's name, even if a parent or guardian completes the registration on their behalf.
- > A separate account is required for each child attending.

Note: Parents or guardians cannot create an account under their own name and add a child later; the child's profile must be created at the time of registration.

Cancellation Policy

- > More than seven business days before the course start date: 100% refund, minus a \$30 cancellation fee.
- > Seven business days or fewer before the course start date: No refund issued.

Note: All cancellations must be done by email to CPS.Summercamps@kpu.ca.

Payment Method:
Visa and Mastercard

Required Forms

- > All required forms must be completed before camp begins to ensure a safe and smooth experience for your child. Completing these forms in advance helps our staff provide appropriate support and ensures an efficient check-in process on the first day of camp.
- > The following forms are required and can be found on [Summer Camp website](#):
 - Informed Consent
 - Medical Information
 - Media Consent



Faculties & Locations

ARTS camps provide an introduction to creative disciplines across visual arts, digital media, music, and performance. Participants explore artistic practices, develop creative thinking, and engage in collaborative, experiential learning in a supportive and inspiring environment.

SURREY
LANGLEY
RICHMOND

BUSINESS camps provide an introduction to core business concepts with a focus on entrepreneurship, sustainability, and social responsibility. Participants gain exposure to how businesses operate, think strategically, and create positive impact within their communities through collaborative and experiential learning.

SURREY

DESIGN camps introduce participants to the fundamentals of design and creative problem-solving across a range of disciplines. Through hands-on and project-based learning, participants explore techniques, tools, and processes used by professional designers while developing creativity, technical skills, and a portfolio of work in a supportive and inspiring environment.

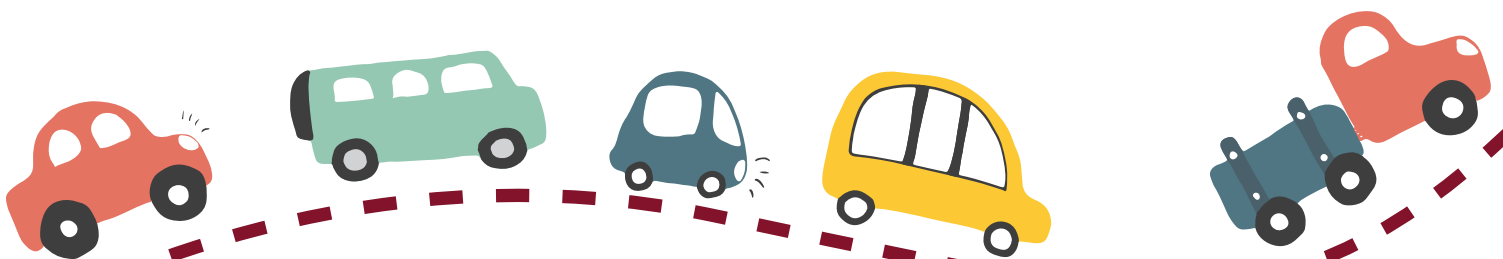
RICHMOND

SCIENCE camps introduce participants to a variety of STEM disciplines, including biology, chemistry, physics, engineering, health sciences, horticulture, and mathematics. Through hands-on, exploratory learning, participants develop curiosity, problem-solving skills, and an understanding of scientific concepts in a dynamic and engaging environment.

LANGLEY

TRADES camps introduce participants to a variety of skilled trades, fostering hands-on learning, practical skills, and problem-solving in an engaging and supportive environment. Participants gain exposure to different trades while developing confidence, creativity, and an appreciation for technical work.

CLOVERDALE TECH



Camp Drop-Off and Pick-Up Procedures

To ensure the safety and well-being of all participants in the KPU Youth Summer Camps (“Campers”), KPU Youth Summer Camps follow clear and structured drop-off and pick-up procedures. We appreciate your cooperation in following these guidelines to help create a smooth start and end to each camp day.

Daily Drop-Off (Check-In)

- › Camp drop-off takes place at the designated camp location on campus, as outlined in your camp confirmation details.
- › Drop-off times will be communicated in advance and must be followed to ensure proper supervision.
- › Camp staff will be present to greet Campers and assist with check-in. Campers must be signed in by a parent or authorized guardian each day.
- › Please ensure your Camper arrives on time and ready for the day, including appropriate clothing, footwear, water bottle, lunch, snacks, and any required personal items.

For safety reasons, Campers may not be dropped off early or left unattended before camp staff are present.

Daily Pick-Up (Check-Out)

- › Camp pick-up occurs at the same designated location unless otherwise communicated.
- › Campers must be signed out by a parent, guardian, or an individual authorized in advance on the camper’s registration forms.
- › If parents would like Campers to leave on their own, please ensure that is identified on the first day of camp.
- › Valid photo identification may be requested at pick-up.
- › Camp staff will only release Campers to individuals listed as authorized contacts.

If someone different will be picking up your Campers on a specific day, please notify camp staff in advance in writing.

Late Pick-Up

- › Parents/guardians are expected to arrive on time for pick-up.
- › Repeated late pick-ups may result in additional fees or impact your Camper’s continued participation in camp, at the discretion of KPU.
- › If you anticipate being late, please contact the Camp Coordinator as soon as possible using the contact information provided in this guide.

Absences and Schedule Changes

- › If your Camper will be absent or arriving late, please notify camp staff in advance.
- › Any changes to drop-off or pick-up arrangements must be communicated as early as possible to ensure camper safety.

Safety Reminder

For the safety of all participants, Campers will not be released without proper sign-out. These procedures are in place to protect your Camper and ensure a secure camp environment. Thank you for your cooperation and support in helping us maintain a safe and positive experience for all KPU Youth Summer Camp participants.



Prepare for Camp

Preparing your Camper for camp helps ensure a safe, comfortable, and positive experience. Please review the information below carefully and talk through these expectations with your Camper before their first day.

What to Bring

› Campers should arrive each day with the following items clearly labelled with their name:

- A refillable water bottle.
- A nutritious lunch and snacks (see Lunches section below).
- Weather-appropriate clothing (including a light jacket or rain layer).
- Closed-toe footwear suitable for indoor and outdoor activities.
- Sunscreen (applied before arrival when possible).
- Hat for sun protection.
- Any required medications (see Medications section).

Depending on the specific camp, additional items may be required. Families will be notified in advance if this applies.

Please Leave at Home

› To help maintain a safe and focused learning environment, please do not send Campers with the following items:

- Electronic devices (phones, tablets, gaming devices) unless explicitly permitted.
- Valuable or sentimental items.
- Toys or personal equipment not related to camp activities.
- Weapons or items that could be considered unsafe.

KPU is not responsible for lost, stolen, or damaged personal items.

Lunches

› Campers are responsible for bringing their own lunch and snacks each day unless otherwise specified. Please ensure meals are:

- Nutritious and sufficient for a full day of activity.
- Easy for your Camper to open and manage independently.
- Stored in a clearly labelled lunch bag.

Please note:

- Access to refrigeration or reheating may be limited. Please plan lunches accordingly.
- On campus cafeteria may be an option but not guaranteed as their schedule changes during summer term.
- Leaving campus for lunch will not be permitted.

Dress Code

- › Campers should wear comfortable clothing suitable for active, hands-on learning.
- Closed-toe shoes are required at all times.
- Clothing should allow for movement and may get dirty during activities.
- Clothing with inappropriate language or imagery is not permitted.

Allergies and Dietary Restrictions

- › Parents/guardians must disclose all allergies, dietary restrictions, and medical conditions on the required registration and health/medical forms.
- › While KPU Youth Summer Camps make reasonable efforts to reduce risk, we cannot guarantee an allergen-free environment. Camp staff rely on the information provided by families to respond appropriately and in a timely manner.

Medications

- › All medications must be declared in advance and provided according to KPU guidelines.
- Medications must be in original, clearly labelled containers.
- Written authorization and instructions must be provided.
- Camp staff are not medical professionals but may administer medication as authorized.
- › Campers should not carry medications on their person unless specifically approved in advance.

First Aid

- › Facilities staff are trained in Standard First Aid and CPR or equivalent. A basic first aid kit is available at all camp locations.
- › For minor injuries, staff will provide first aid as needed. In the event of a more serious injury or illness, parents/guardians will be contacted immediately and appropriate medical care will be arranged.

Accessibility

- › KPU Youth Summer Camps are committed to providing an inclusive and accessible environment. We encourage families to share any accommodation or accessibility needs as early as possible so we can work together to support a positive camp experience.
- › Please contact the camp team in advance to discuss individual needs, supports, or accommodations.

Behavior Expectations

KPU Youth Summer Camps are committed to providing a safe, inclusive, and respectful environment for all participants. Campers are expected to treat others with kindness and respect, follow staff instructions, participate appropriately in activities, and use university spaces and equipment responsibly.

Bullying, harassment, physical aggression, inappropriate language, or behavior that compromises the safety or well-being of others will not be tolerated and parents will be notified to pick up Campers.

Camp staff will address behavioral concerns using clear communication and supportive guidance. In cases of serious or repeated misconduct, parents/guardians may be contacted, and a Camper's participation may be reviewed at the discretion of KPU.

We encourage families to review these expectations with their Camper to help ensure a positive and successful camp experience.



Illness Disclaimer

The health and safety of Campers, families, and staff is a priority at KPU Youth Summer Camps. This policy is in place to help reduce the spread of illness and ensure a safe and positive environment for all participants.

Illness Disclaimer

By enrolling a child in KPU Youth Summer Camps, parents and guardians acknowledge that participation in group-based activities may increase the risk of exposure to communicable illnesses. While KPU takes reasonable precautions to support a healthy environment, we cannot guarantee that illness will not occur.

Parents/guardians accept responsibility for assessing their Camper's health daily and determining their readiness to attend camp.

When to Keep Your Child Home

Campers should not attend camp if they are experiencing any of the following:

- Fever or chills.
- Vomiting or diarrhea within the past 24 hours.
- Persistent cough, sore throat, or difficulty breathing.
- Signs of contagious illness (e.g., flu-like symptoms).
- Any condition that prevents full participation in camp activities.

If your Camper becomes ill overnight or on the morning of camp, please keep them at home and notify the camp as soon as possible and notify the Camp Coordinator.

Illness During Camp

If a Camper becomes ill during the camp day:

- Camp staff will provide appropriate care and supervision.
- Parents/guardians will be contacted to arrange prompt pick-up.
- Campers who are unwell will be separated from group activities where possible until pick-up.

Campers must be picked up as soon as reasonably possible if they are unable to continue participating due to illness.

Return to Camp

Campers may return to camp once they are symptom-free and able to fully participate in daily activities. In some cases, medical clearance may be requested before a camper returns.

Medication and Symptom Management

Medications provided to manage symptoms (such as fever reducers) should not be used to allow a Camper to attend camp when they are otherwise unwell.

Refunds and Missed Days

Absences due to illness are not eligible for refunds or make-up days. Please refer to the Registration, Cancellation, and Refund Policy for full details.

Shared Responsibility

Maintaining a healthy camp environment is a shared responsibility. We appreciate the cooperation of families in monitoring health, communicating concerns promptly, and following this policy in the best interest of all Campers.

If you have questions regarding illness protocols or your Camper's ability to attend camp, please contact the KPU Youth Summer Camps team using the contact information provided in this guide.



Emergency Procedures

The safety and well-being of all Campers and staff is a top priority at KPU Youth Summer Camps. The following procedures outline how emergencies are managed to ensure a prompt, coordinated, and appropriate response.

Emergency Preparedness

KPU Youth Summer Camps operate within Kwantlen Polytechnic University facilities and follow university safety protocols. Camp staff are trained to respond to emergencies and are familiar with campus-specific emergency procedures, including evacuation routes and emergency communication protocols.

Medical Emergencies

In the event of a medical emergency:

- KPU will have qualified personnel available to assess any situation and, if necessary, provide first aid and/or CPR. Emergency services (911) will be contacted if necessary.
- Parents/guardians will be notified as soon as reasonably possible.
- Camp staff may arrange transportation to a medical facility if required.

Parents/guardians are responsible for all costs associated with medical treatment, emergency services, or transportation.

Fire, Evacuation, and Shelter-in-Place

In the event of a fire alarm, evacuation order, or shelter-in-place directive:

- Campers will follow staff instructions immediately
- Staff will escort Campers to designated safe locations or assembly points
- Attendance will be taken to ensure all Campers are accounted for
- Campers will remain supervised until it is safe to return or until released to parents/guardians

Parents/guardians will be informed of any significant disruptions or early dismissals as soon as possible.

Severe Weather and Environmental Emergencies

In cases of severe weather or environmental hazards:

- Activities may be relocated indoors or suspended
- Camp staff will follow campus guidance and safety protocols
- Families will be notified if schedules are altered or if early pick-up is required

Missing or Unaccounted Camper

If a Camper cannot be immediately located:

- Camp staff will initiate a search following campus procedures
- The Camp Coordinator and campus security will be notified immediately
- Emergency services will be contacted if necessary
- Parents/guardians will be informed promptly

Lockdown or Security Incidents

In the event of a security-related incident:

- Camp staff will follow university lockdown or security protocols.
- Campers will remain under staff supervision in secure locations.
- Communication with families will occur once it is safe and appropriate.

Communication with Families

During an emergency, communication with parents/guardians will be managed by the Camp Coordinator or designated KPU representative. Families are asked not to come to campus unless directed to do so, as this may interfere with emergency response efforts.

Post-Incident Follow-Up

Following an emergency, KPU may provide additional communication to families outlining the situation, response actions taken, and any next steps.

If you have questions about emergency procedures or require clarification, please contact the KPU Youth Summer Camps team using the contact information provided in this guide.

Youth Summer Camps

Ready to Register?

1. Visit the online registration page at kpu.ca/camps.
2. Select your camp.
3. Create an account using the child's name, even if a parent or guardian is registering on their behalf.
4. Complete separate registration for each child.
5. Complete payment.

Register Online

Registration can only be completed online.

Cancellation

- › **More than seven business days before the course start date:**
100% refund, minus a \$30 cancellation fee.
- › **Seven business days or fewer before the course start date:** No refund issued.

All cancellations must be done by email to
CPS.Summercamps@kpu.ca

Contact Us

- › **Email:** CPS.Summercamps@kpu.ca
- › **Phone:** 604.598.5263
- › **Office hours:** 8:30am – 4:00pm



KWANTLEN
POLYTECHNIC
UNIVERSITY