



**University of Idaho**

College of Agricultural  
and Life Sciences

# TELLING A NEW STORY

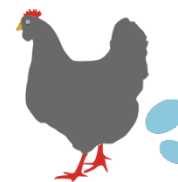
WORKING TOGETHER TO BUILD PLACE-  
BASED FOOD SYSTEMS IN THE PALOUSE-  
CLEARWATER REGION OF THE US INLAND  
NORTHWEST

Colette DePhelps

Community Food Systems, Northern District Extension

Darin Saul & Soren Newman

Office of Grant and Project Development



























Enter to Win!

CHOCOLATE  
Newman-O's

CHOCOLATE  
Newman-O's

Ginger-O's

OLD ORIGINAL  
Newman-O's

CHOCOLATE  
Newman-O's

Ginger-O's

OLD ORIGINAL  
Newman-O's

QUE PASA

BUY FRESH  
BUY LOCAL  
VIRGINIA'S  
SALSA

BUY FRESH  
BUY LOCAL







# FOOD

## ON THE TABLE

a gathering to grow the resources that will feed the palouse

### Sponsored by



### Partners



### With additional support from



WSU Sustainable Food & Agricultural Systems Initiative Project











www.lazyrbeef.com  
**LAZY RANCH**



We ranch like your  
**FUTURE**  
Depends on it.











LINC Foods  
www.lincfoods.com

WASHINGTON  
B14349  
EVERGREEN STATE



INBOUND SCHEDULES		THURSDAY		LIFELINE FOR GFS
MONDAY	NORTH	SOUTH	NORTH	
2:30 PLAINS/FIRE	5:30 LL DAIRY	5pm ROMAN	5:45 LL DAIRY	MONDAY = NORTH P/U
4pm MOORE	5:45 LL PRODUCE	6pm DIXON	6:15 LL PRODUCE	THURSDAY = SOUTH CSA
5pm ROMAN	6:30 HAMILTON	6:45 ARLEE	TIM HAMILTON	FRIDAY = MSLA ROUTE
6pm DIXON			8pm CFO	LL PHONE #
6:45 ARLEE				642-3943

### MONDAY PACKING

- SPOKANE CROSS DOCK > CHARLIES
- HELENA
- MISSOULA
- SUMMIT

SHIRT  
TLC B, TLC R, TLC L  
TLC PRODUCE, PENNY  
GIFT AND GIFTES  
NO PHILLIPS FEEDBACK  
PILLOW PILLS, HERRIN  
LIVINGSTON COOK, HERRIN  
CHANDLER HILL, BITE HILL  
VINO FEEDBACK

### TUESDAY PACKING

- BSB & Food COOP DELIVERED FIRST THING
- FLATHEAD
- BOZEMAN/BUTE/BILLINGS → CHARLIES
- RANCH @ RC & PAWS UP

### THURSDAY PACKING

- SPOKANE CROSS DOCK > CHARLIES
- BOZEMAN/BUTE
- MISSOULA
- BITTERROOT

### FRIDAY PACKING

- BSB & Food COOP DELIVERED FIRST THING
- FLATHEAD
- HELENA/BILLINGS → CHARLIES

### LINE WISH LIST:

mary@kalispellcreamery.com

TIMELESS 406 866 3340

TIPUS CHAI 833 4500

HELENA  
RFM  
NG  
51

### SUMMIT BOLS

- BOZO
- BELGRADE/PORKS
- LIVINGSTON
- HELENA/GF
- BUTE
- BILLINGS

KEY FOR  
OUR MASTER  
LOCK

DELIVERY ORDER (July 2016)

ACT  
BEST FOODS  
MOOL  
N  
DEERFUL'S  
MOOL  
E  
MOOL  
SDEN  
HARVEST FOODS  
CALL  
INTER  
DEN  
S

FH I = ROSA BELL  
+ BELTON  
FH II = POLSON  
BIGFIRE  
LAWSON

BLACKTAIL  
SEVEN  
PRAIRIEHOUSE  
TANARACK  
CHAMP HERRIN  
ACCOUNTS GO W/ FH II  
AFTER BIGFIRE ON









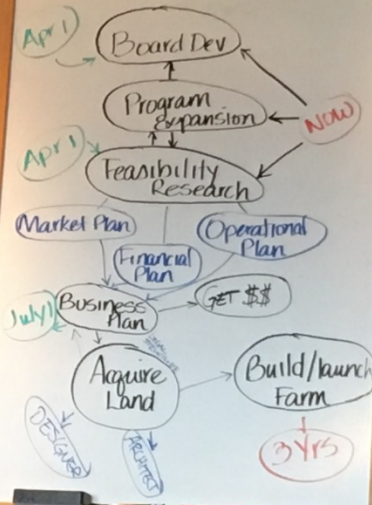




\* Plant love. Grow wisdom. Reap joy. \*

### THE BIKE RACK

- rural vs Urban
- location
- the "vision"
- multi-dimensional data
- \* planning? (what is the business model? what would you do?)
- \* on-going surveys





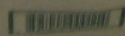






JOSEPH'S GRAIN FLOUR  
LOW GLUTEN

50 LBS. NET  
(22.68 kg.)

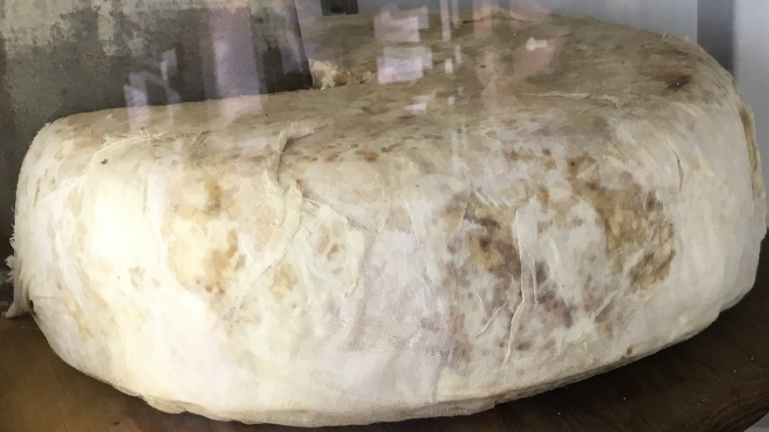






**Boos**  
Block  
Effingham, Illinois











# Our Local Purveyors

**POKEY CREEK**

♥ POTATOES  
♥ CAULIFLOWER  
♥ BEETS  
♥ CARROTS  
♥ PEPPERS  
♥ ONIONS

**OMACHE**

♥ BASIL  
♥ ONIONS  
♥ CARROTS  
♥ BEETS

**MOSCOW URBAN FARM CO.**

♥ ZUCCHINI  
♥ BEETS  
♥ KALE  
♥ TOMATOES  
♥ BASIL  
♥ ONIONS  
♥ ARUGULA  
♥ CANTALOUPE

**SOSONI FARM**

♥ EGGS

**DEEP ROOTS**

♥ TOMATOES  
♥ FENNEL  
♥ BEETS  
♥ RADISHES  
♥ BELL PEPPERS  
♥ ARUGULA

**RIVER CITY**

♥ FLOWERS  
♥ PARSLEY ♥ LEEKS  
♥ BASIL ♥ CHIVES  
♥ TOMATOES ♥ BEETS  
♥ PEPPERS ♥ ONIONS  
♥ ARUGULA  
♥ SAGE ♥ HOT PEPPERS

**AFFINITY**

♥ BEETS  
♥ TOMATOES  
♥ ARUGULA  
♥ PARSLEY  
♥ BASIL  
♥ KALE

**HINDERER**

♥ EGGS  
♥ PIGS





**University of Idaho**

College of Agricultural  
and Life Sciences

# THANK YOU!

## QUESTIONS?

**Colette DePhelps**

Community Food Systems, Northern District Extension

[cdephelps@uidaho.edu](mailto:cdephelps@uidaho.edu)

**Darin Saul & Soren Newman**

Office of Grant and Project Development

[dsaul@uidaho.edu](mailto:dsaul@uidaho.edu)

[newman@uidaho.edu](mailto:newman@uidaho.edu)

