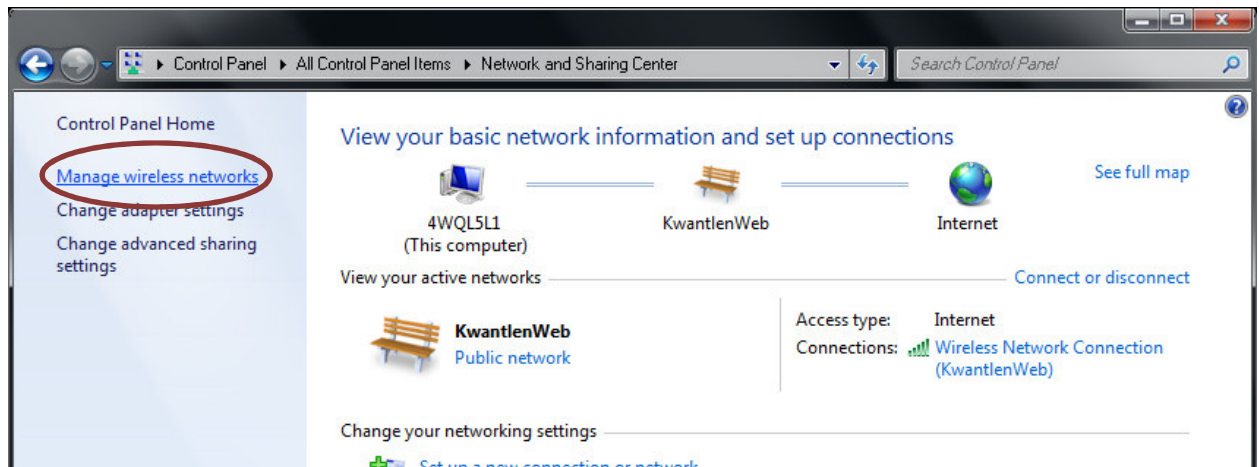
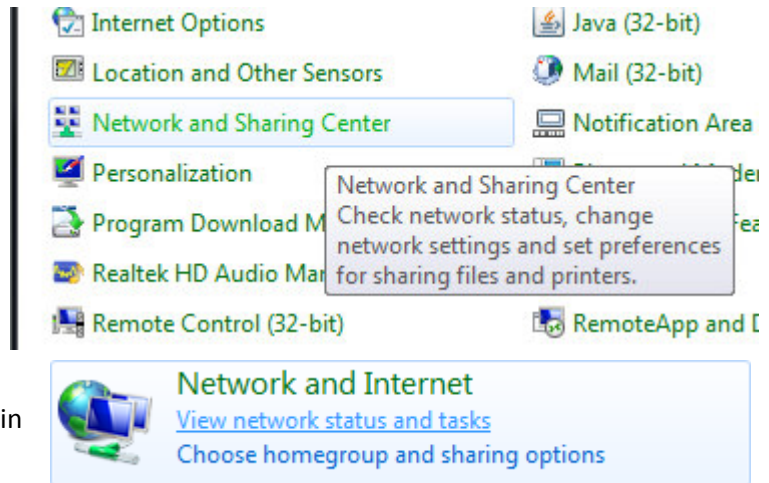


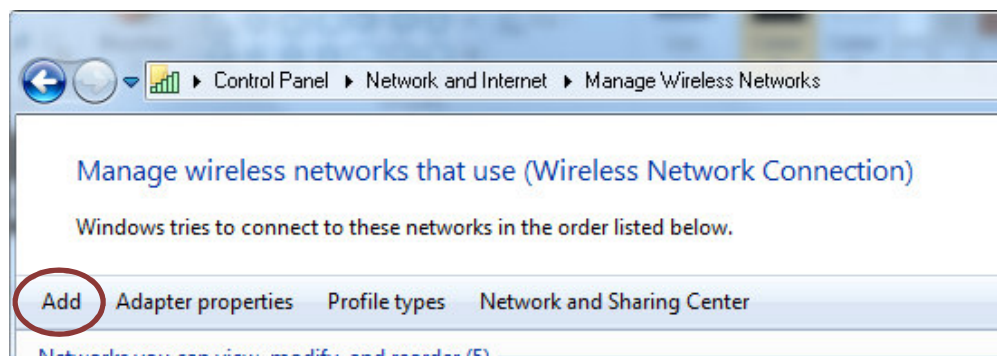
Connecting to Kwantlen's Secure Wi-Fi with Windows 7

Note: These instructions are for the standard Windows Wireless Client.

1. From your control panel, open **Network and Sharing Center**. If your control panel is in Category view, click on **View network status and tasks** under **Network and Internet**.
2. Click on **Manage wireless networks** in the left pane.



3. Click the **Add** button.



4. Select **Manually create a network profile.**

5. Enter the network name. Note that capitalization matters.

Students:

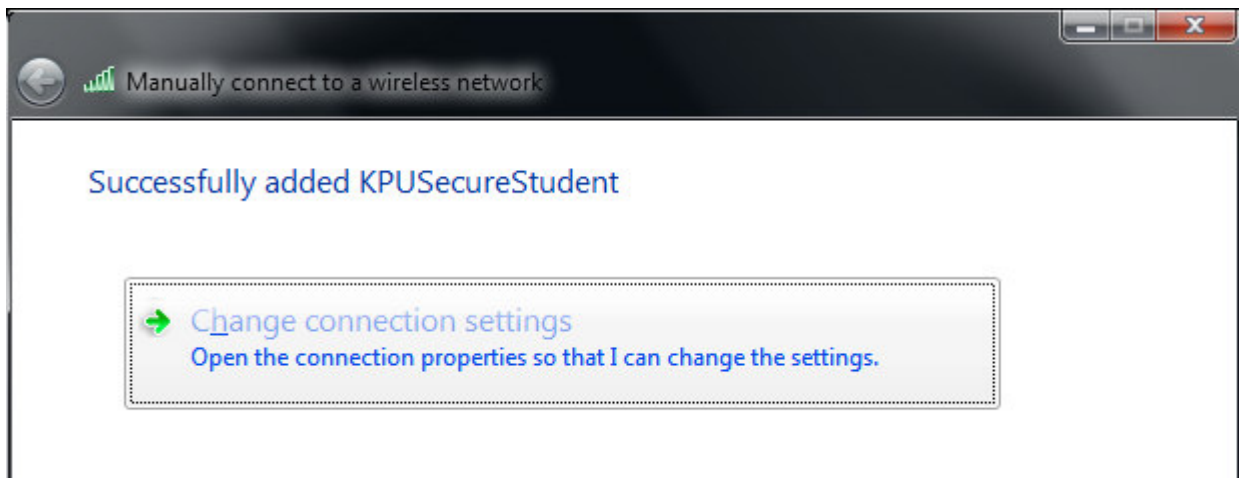
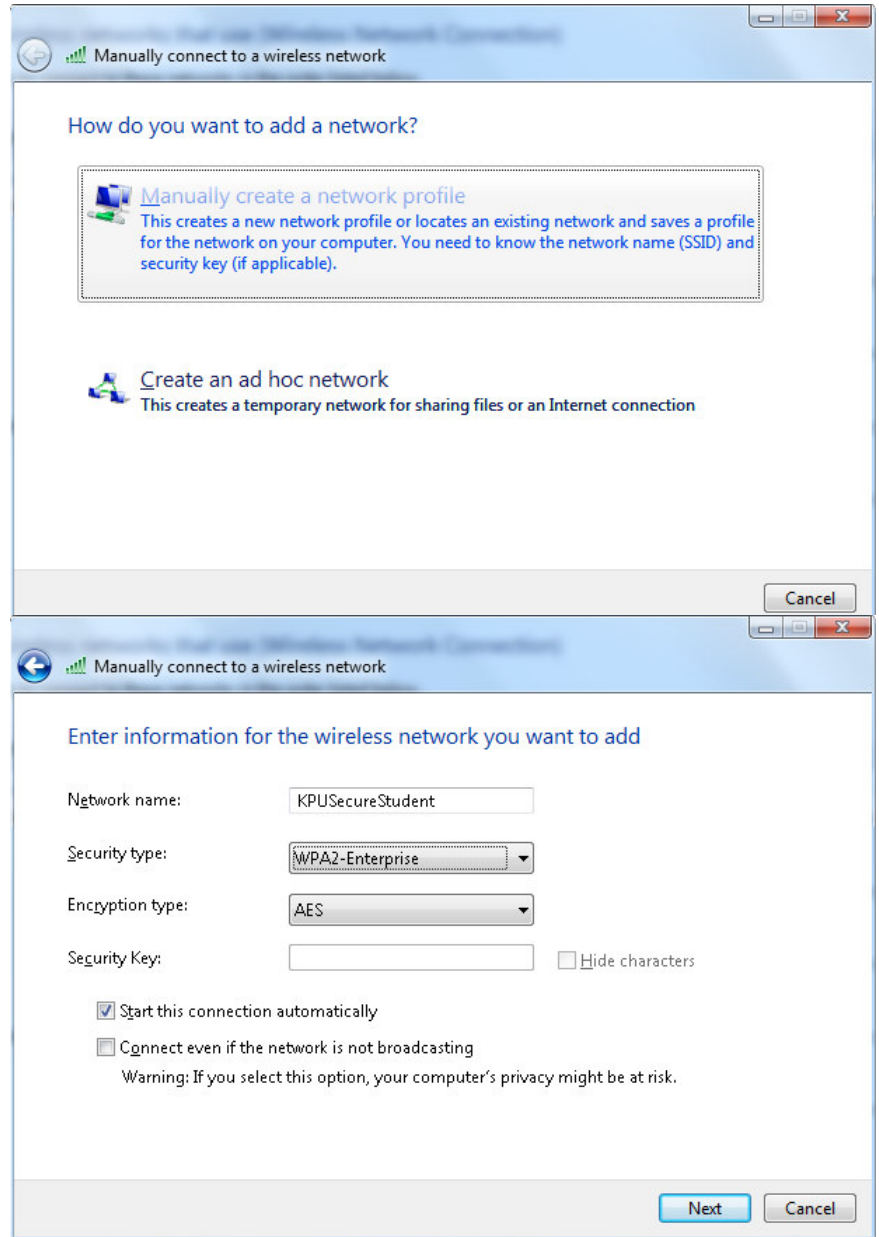
Enter **KPUSecureStudent** as the network name.

Employees:

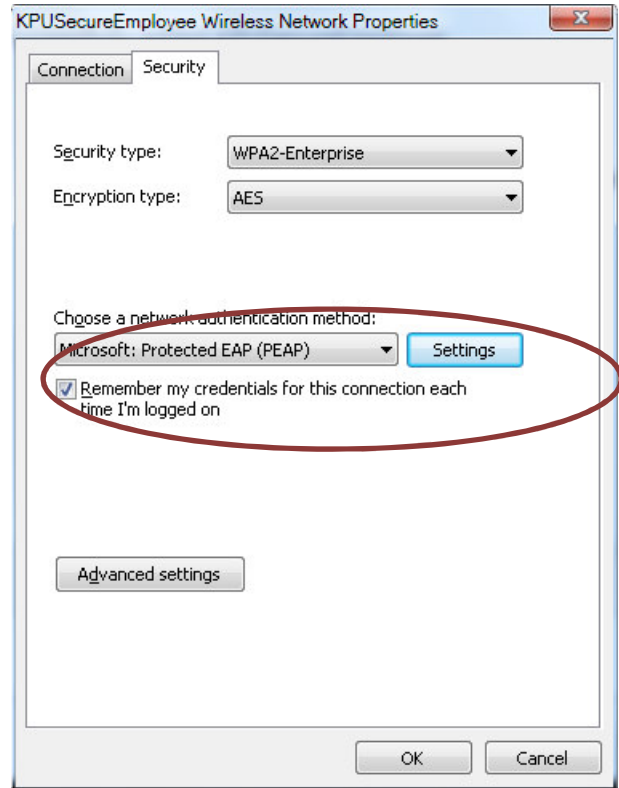
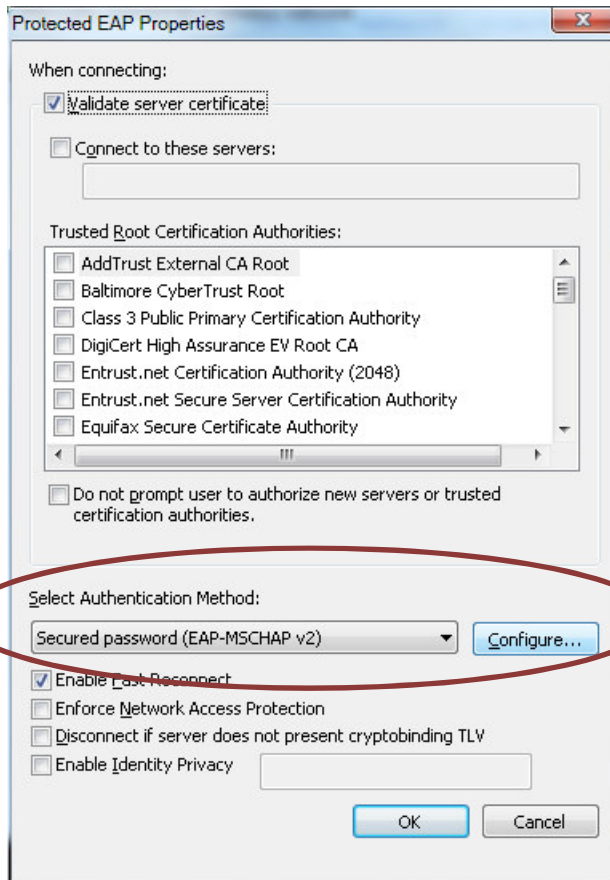
Enter **KPUSecureEmployee** as the network name.

Select **WPA2-Enterprise** as the Security type, and **AES** as the Encryption type. Click **Next.**

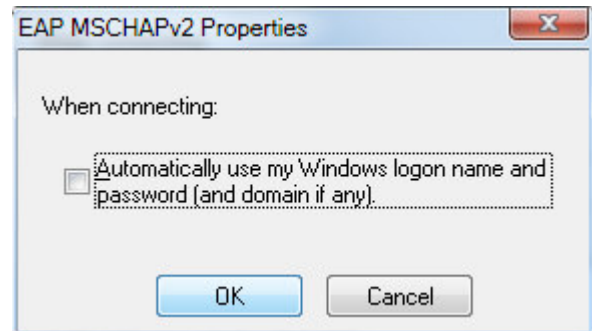
6. Click on **Change connection settings.**



- Click on the **Security** tab. Ensure that **Microsoft Protected EAP (PEAP)** is selected as your network authentication method. Then, click on **Settings**.
- Make sure that **Secured password (EAP-MSCHAP v2)** is selected as the authentication method. Click on **Configure**.

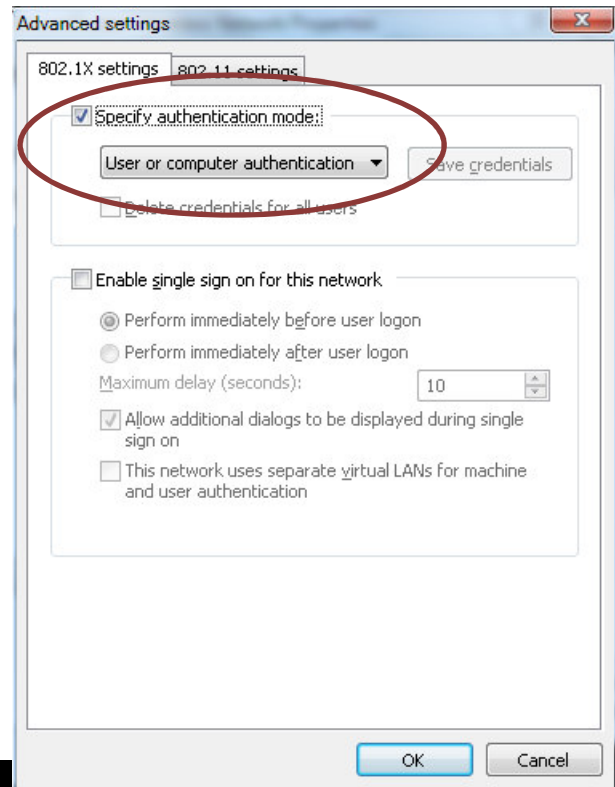


- Uncheck the **Automatically use my Windows logon name and password (and domain if any)** checkbox. Click **OK**. Click **OK** in the Protected EAP Properties window as well.

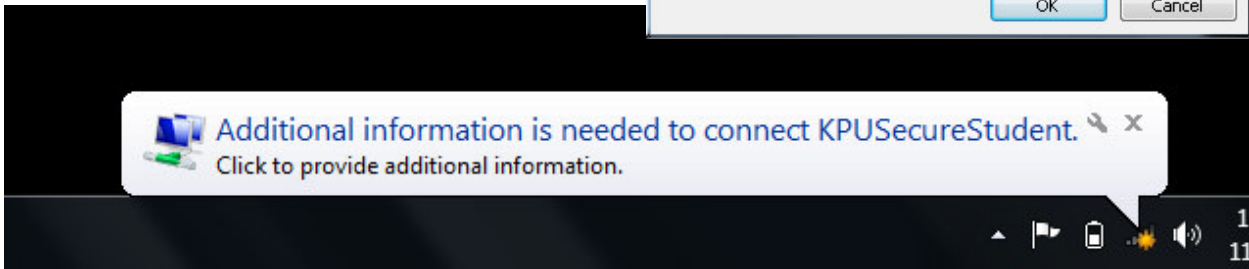


- Click on **Advanced settings** in your KPUSecureEmployee/KPUSecureStudent Wireless Network Properties, opened in step 7.

11. Check the **Specify authentication mode** checkbox. Select **User or computer authentication**. Click **OK** in all windows opened in all steps thus far.



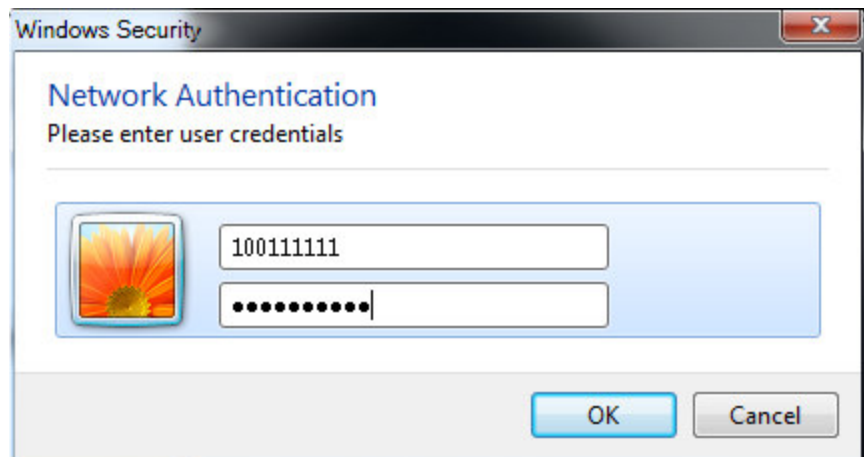
12. You will receive a message in your system tray, asking for additional information to connect to the network. Click on the notification.



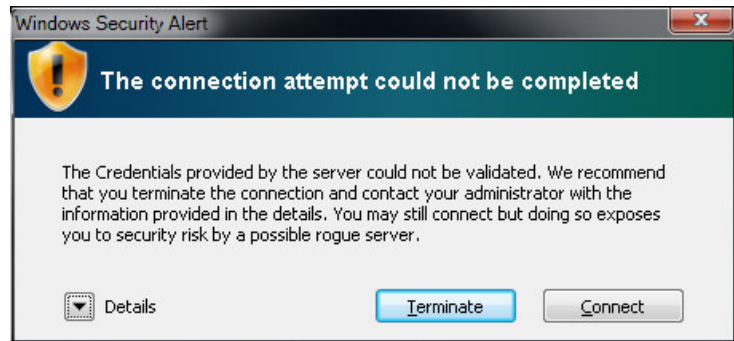
13. Sign in with your typical Kwantlen credentials.

Students: Enter your Student ID and PIN

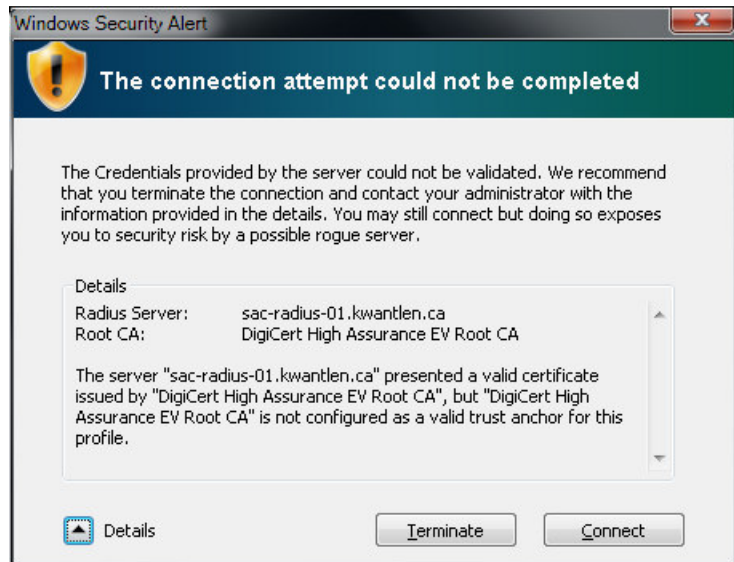
Employees: Enter your username and password.



14. You may receive a Windows Security Alert, informing you that the connection attempt could not be completed. If you see this, click on **Details** in the lower left corner.



15. Check that the Radius Server is either `sac-radius-01.kwantlen.ca` or `sac-radius-02.kwantlen.ca` and that the Root CA is DigiCert. If that's true, click **Connect**.



Congratulations, you are now connected to Kwantlen's secure Wi-Fi network.