


Connection to Kwantlen's Secure Wi-Fi with Windows 7

- 1) Click on the Wi-Fi icon () in your system tray.

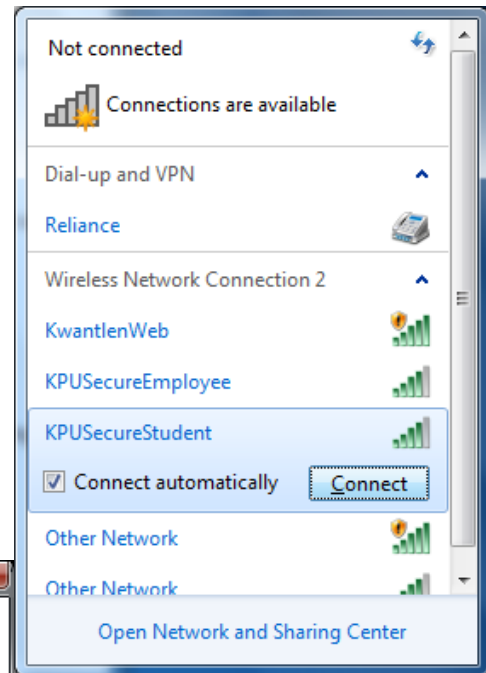
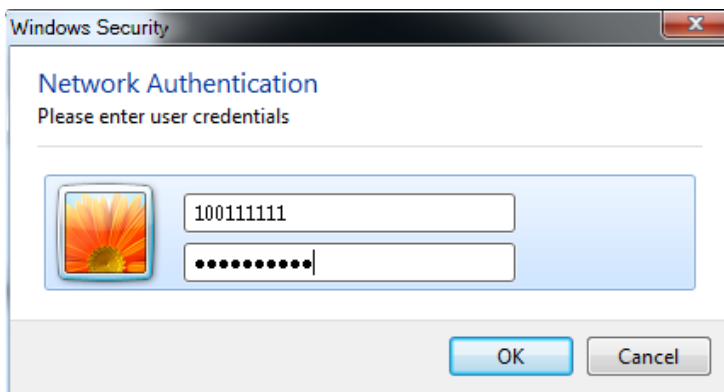
Students: In the resulting window, click on **KPUSecureStudent** and click **Connect**.

Employees: In the resulting window, click on **KPUSecureEmployee** and click **Connect**.

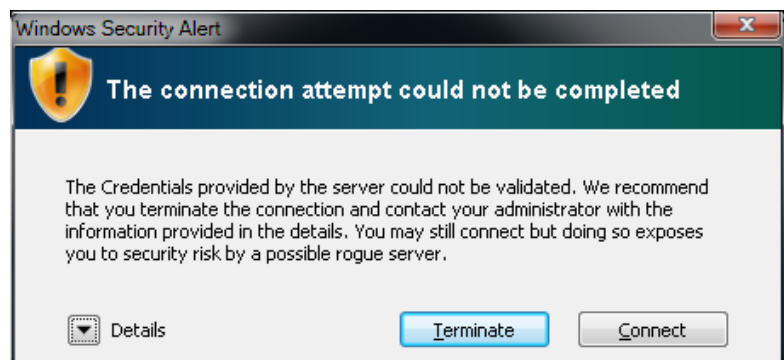
- 2) You will be prompted for your login credentials.

Students: Enter your student number and PIN.

Employees: Enter your username and password.



- 3) You will receive a Windows Security Alert, informing you that the connection could not be completed. Click on the Details button in the lower left corner.



- 4) Ensure that the Radius Server is either sac-radius-01.kwantlen.ca, or sac-radius-02.kwantlen.ca. Also ensure that the Root CA is DigiCert. If both of those are true, click **Connect** in the lower right corner. After a few seconds, you should successfully connect to Kwantlen's secure Wi-Fi network.

