

OVERALL SATISFACTION

Percent of students who felt somewhat or very satisfied with...

Educational Experience

84%

DOMESTIC

82% in 2017

87%

INTERNATIONAL

86% in 2017

KPU Services

71%

DOMESTIC

75% in 2017

81%

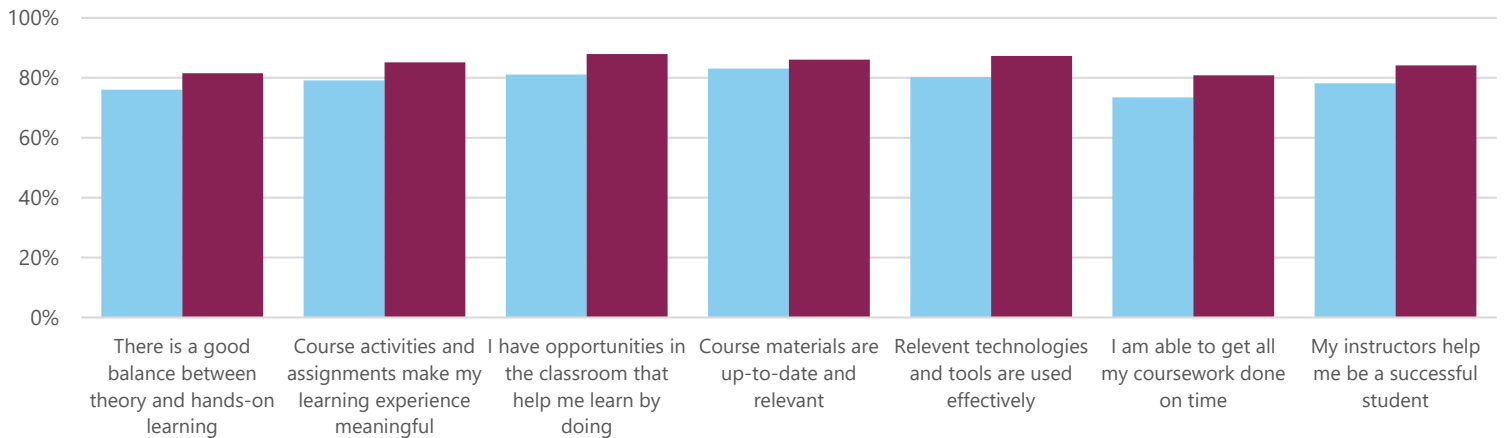
INTERNATIONAL

87% in 2017

LEARNING EXPERIENCE

Percent of students who somewhat or strongly agreed

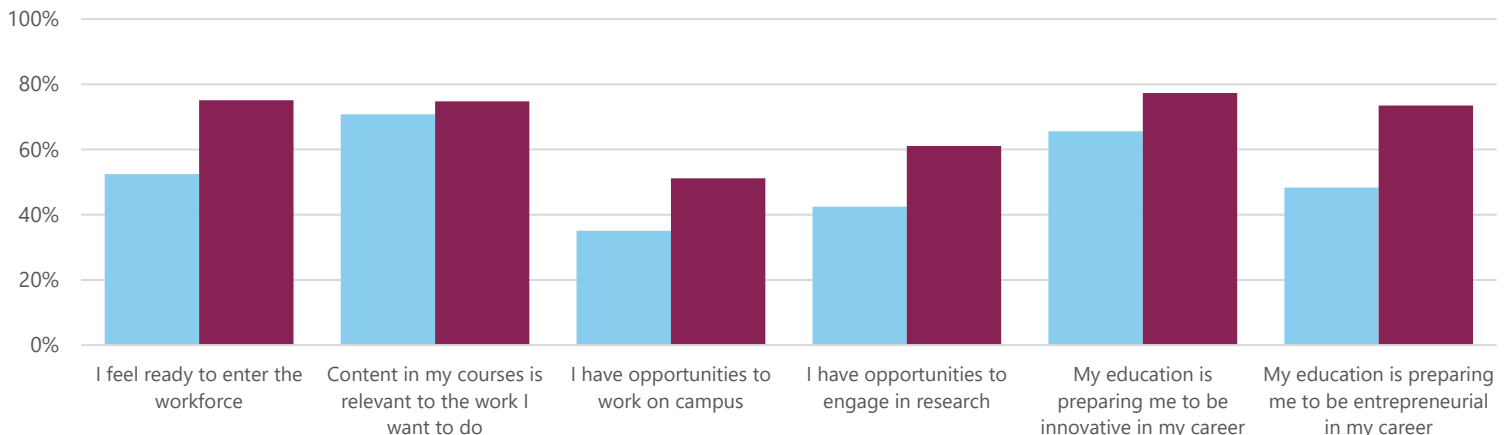
■ Domestic ■ International



WORK, RESEARCH, & INNOVATION

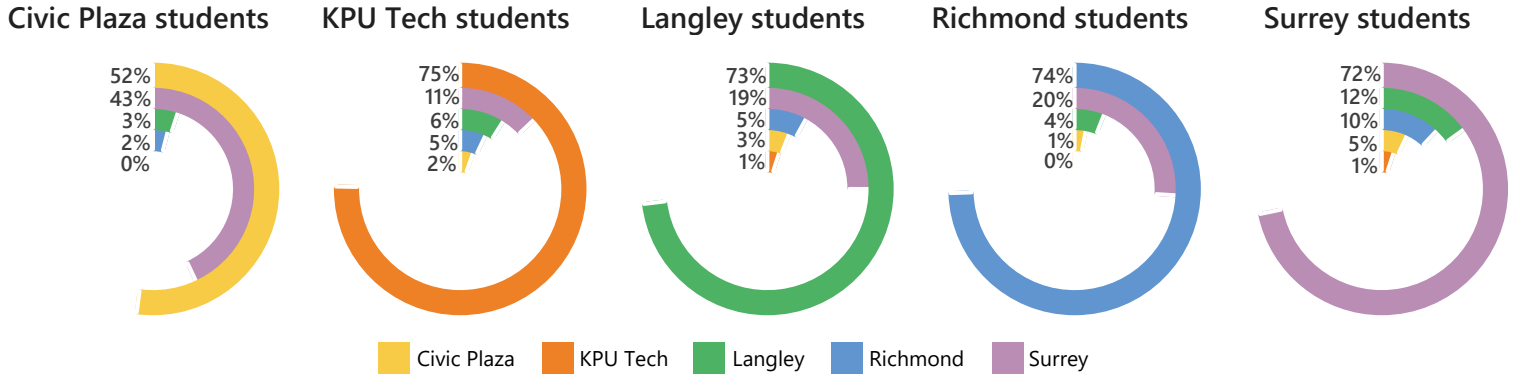
Percent of students who somewhat or strongly agreed

■ Domestic ■ International



WHERE WOULD YOU PREFER TO TAKE ALL YOUR CLASSES?

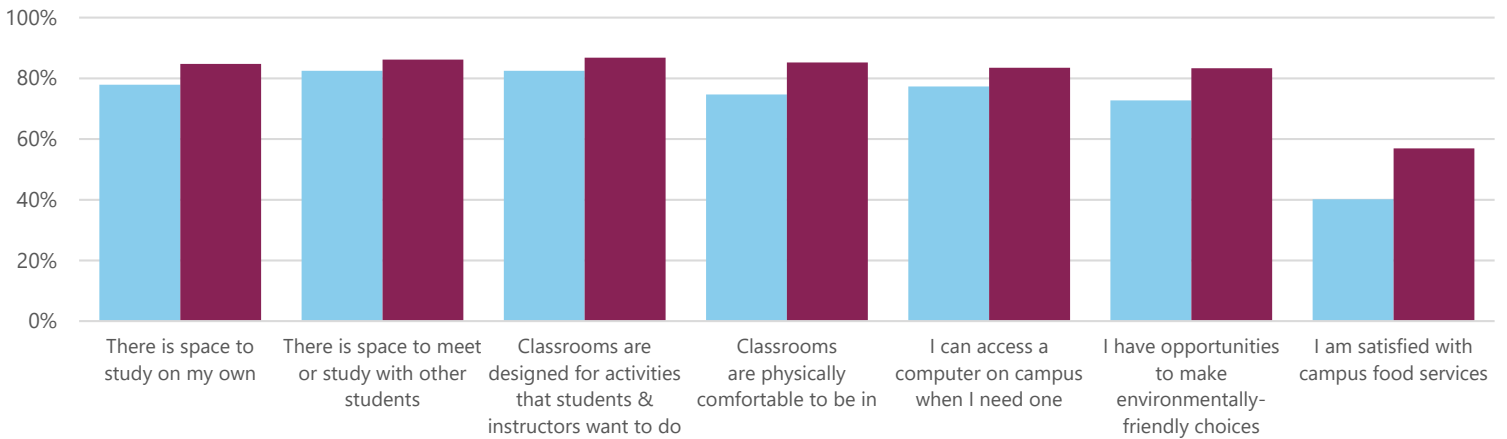
Based on the campus where the student currently spends most of their time



CAMPUS SPACES & SERVICES

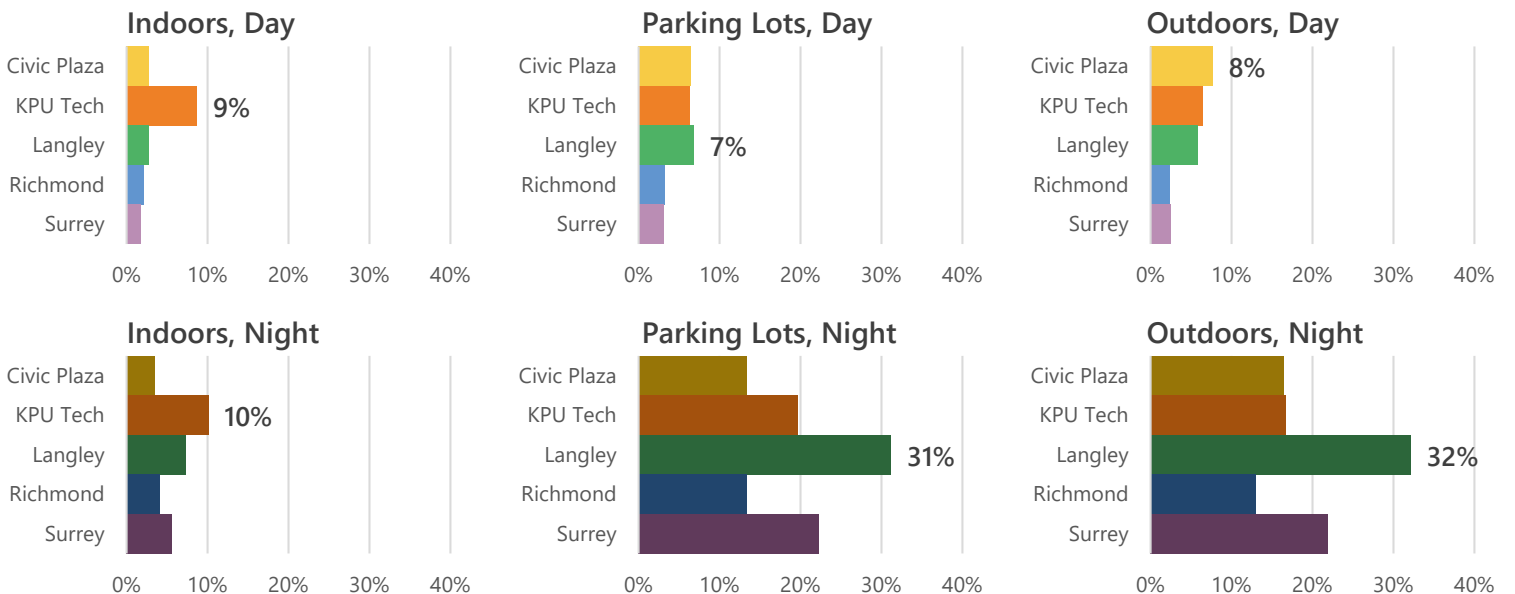
Percent of students who somewhat or strongly agreed

■ Domestic ■ International



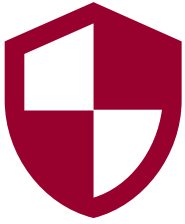
CAMPUS SAFETY

Percent of students who feel unsafe on campus...

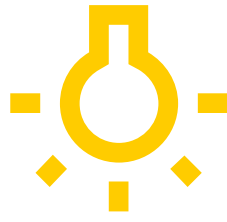


How can we help you feel safer on campus?

Overall, 21% of students feel unsafe outside or in parking lots after dark. Here are some of the suggestions given by students that will improve their feelings of safety on campus, particularly in outside spaces after dark.



Security presence & patrols



Improved lighting



Security cameras



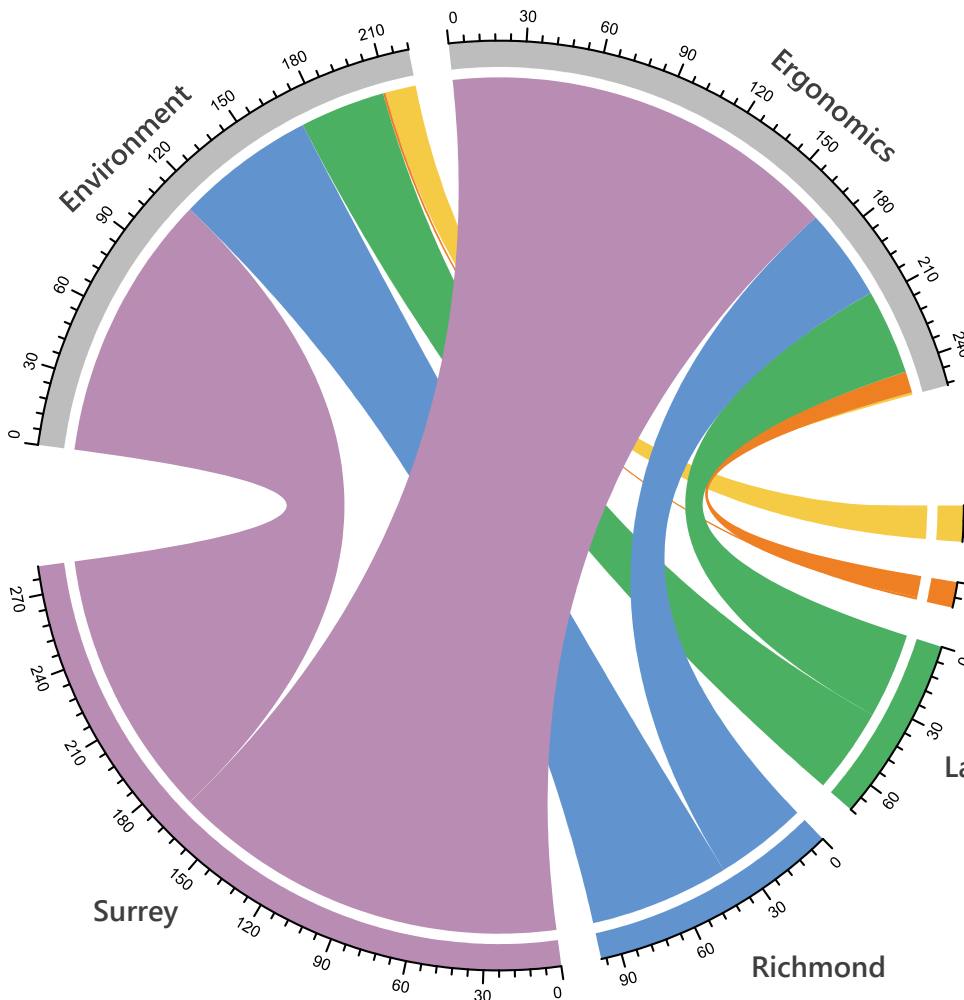
Emergency phones



Some students noted that the parking lots are unsafe for pedestrians due to a lack of crosswalks and speed enforcement. Others requested well-lit waiting places or extended building hours so that they can wait for transit or for their ride home in safety. Langley campus students in particular desired additional protection from in-building theft.

How can we make classrooms more comfortable?

Student comments generally fell into two categories: Ergonomics (e.g., comfortable chairs, better desks & tables, adjustable workstations) and Environment (e.g., temperature, better lighting, appearance)



This chart shows the frequency of comments in each category based on which campus students mostly attend. For example, Surrey students commented more frequently about ergonomics than the environment.

Civic Plaza

KPU Tech

Langley

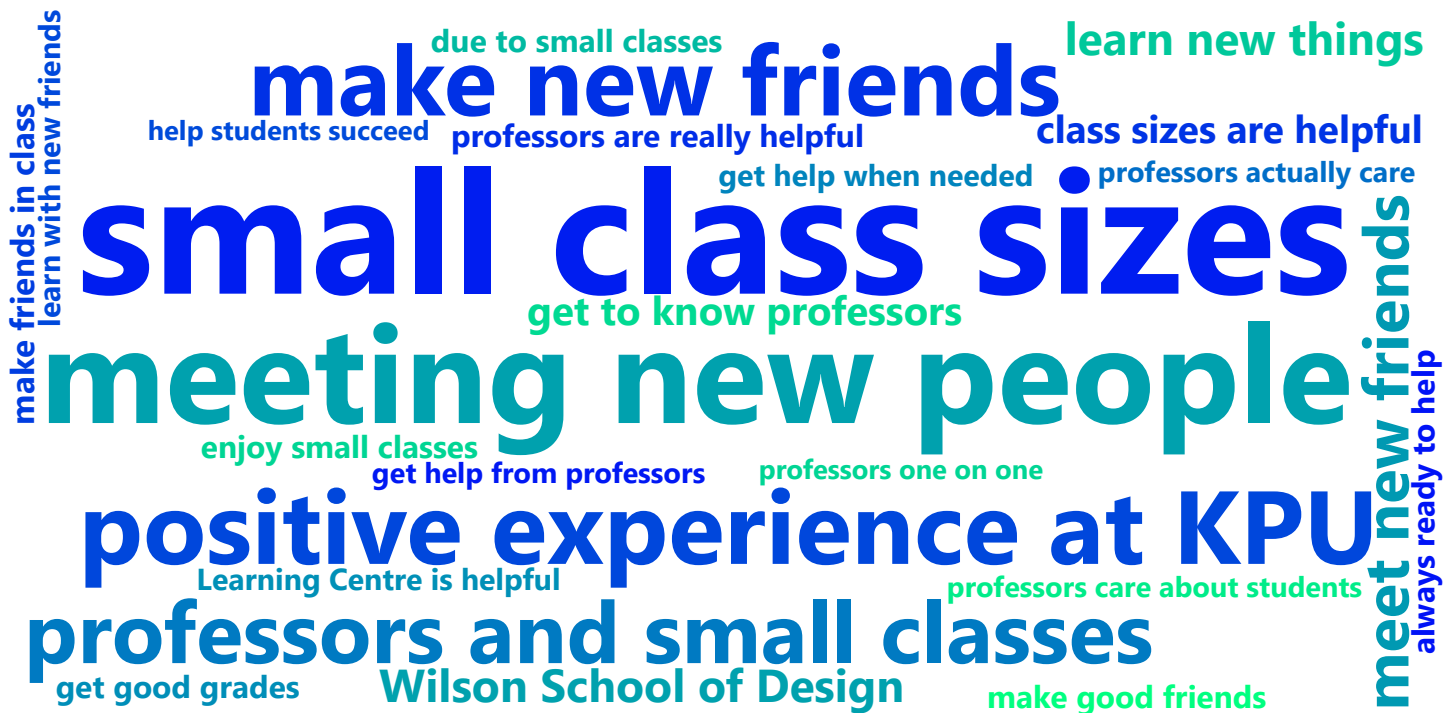
Richmond

Civic Plaza students mostly commented on the environment

KPU Tech students mostly commented on ergonomics

What have been your most positive experiences in attending KPU?

This word cloud represents the themes found in student answers. More prominent themes have larger text.



What is the most important thing KPU could do to improve your experience?

This word cloud represents the themes found in student answers. More prominent themes have larger text.

