

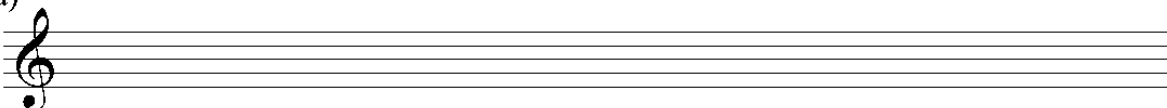
**THEORY PLACEMENT TEST** (Time limit: 1 hour)

1. Write the following scales, using **key signatures** and any necessary accidentals:

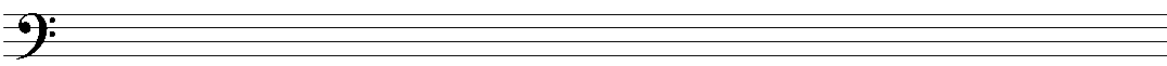
- a) A-flat major, ascending in quarter notes
- b) C-sharp melodic minor, ascending and descending in whole notes
- c) G-sharp harmonic minor, ascending in half notes
- d) B natural minor in eighth notes

(4 x 4 marks)

a)



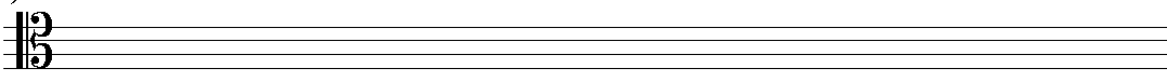
b)



c)



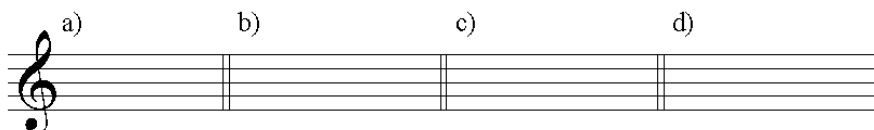
d)



2. Write the following scale steps (do not use key signatures):

(4 x 1 mark)

- a) Supertonic in the key of E-flat major
- b) Mediant in the key of B minor
- c) Leading tone in the key of F-sharp minor
- d) Subdominant in the key of A-flat major



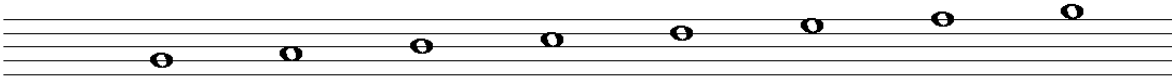
3. Add the necessary **clefs** and **accidentals** to the following to form the specified scales:

a) A major

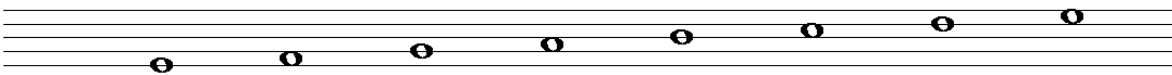
b) G harmonic minor

(2 x 2 marks)

a)



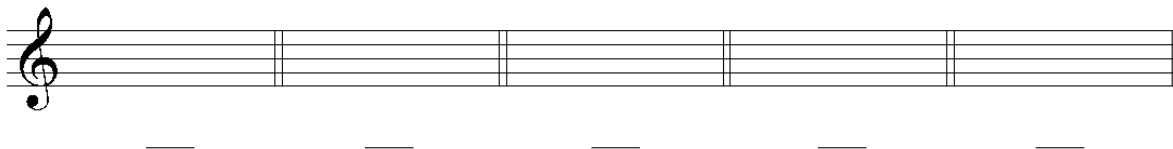
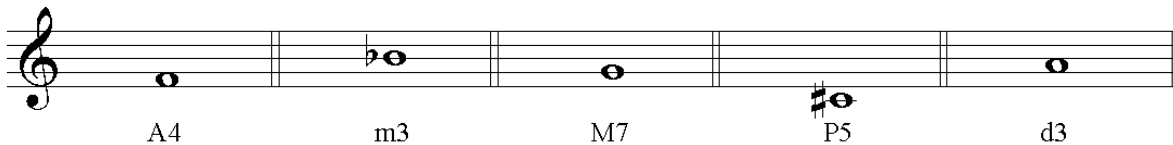
b)



4. a) Write the indicated interval above each given note:

b) Write the **inversion** of each interval from part a) and rename.

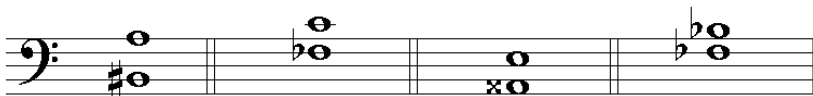
(5 x 3 marks)



5. a) Rewrite each of the given intervals, changing the **bottom** note enharmonically (it will sound the same as the note given).

b) Give the correct name of each interval that you have written.

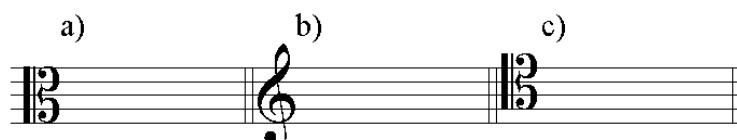
(4 x 2 marks)



6. Using **key signatures**, write the following triads in root position:

- a) The mediant triad of B major
- b) The dominant triad of D minor
- c) The supertonic triad of A major

(3 x 3 marks)



7. Using **key signatures** and any necessary accidentals, write the **dominant seventh chords** that are found in the following keys:

- a) Dominant seventh of D major, in root position
- b) Dominant seventh of B-flat minor, in first inversion
- c) Dominant seventh of E minor, in second inversion
- d) Dominant seventh of A-flat major, in third inversion

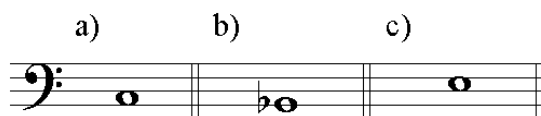
(4 x 2 marks)



8. Add other notes and necessary accidentals above the given notes to create the following triads (DO NOT ALTER THE GIVEN NOTES):

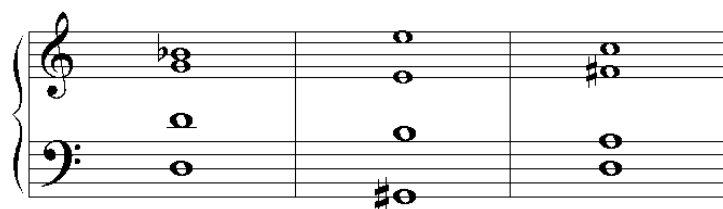
- a) Minor triad in first inversion
- b) Augmented triad in root position
- c) Major triad in second inversion

(3 x 2 marks)



9. Identify the **root**, **quality**, and **inversion** of the following chords:

(3 x 3 marks)



\_\_\_\_\_

10. Provide the **time signature** for each of the following:

(2 x 2 marks)



11. Add the necessary **rests**:

(2 x 2 marks)



12. **Transpose** the following melody into the key of C minor:

(8 marks)



13. Give English equivalents for the following musical terms:

(5 marks)

- a) presto –
- b) decrescendo –
- c) pianissimo –
- d) largo –
- e) da capo –