

2023 Teaching & Learning Commons Annual Report

Through active intentional partnering, the Teaching & Learning Commons provides pedagogical leadership that is grounded in community, ethics, creativity, and care.



Not pictured: Daniel Benzmira, Lisa Gedak, Amanda Grey, Omar Jakir, Robin Leung, Ridhima Suri, Craig Wright
Learn about the team by [clicking here](#).

We at Kwantlen Polytechnic University respectfully acknowledge that we live, work and study in a region that overlaps with the unceded traditional and ancestral First Nations territories of the Musqueam, Katzie, Semiahmoo, Tsawwassen, Qayqayt, and Kwikwetlem; and with the lands of the Kwantlen First Nation, which gifted its name to this university.

Table of Contents

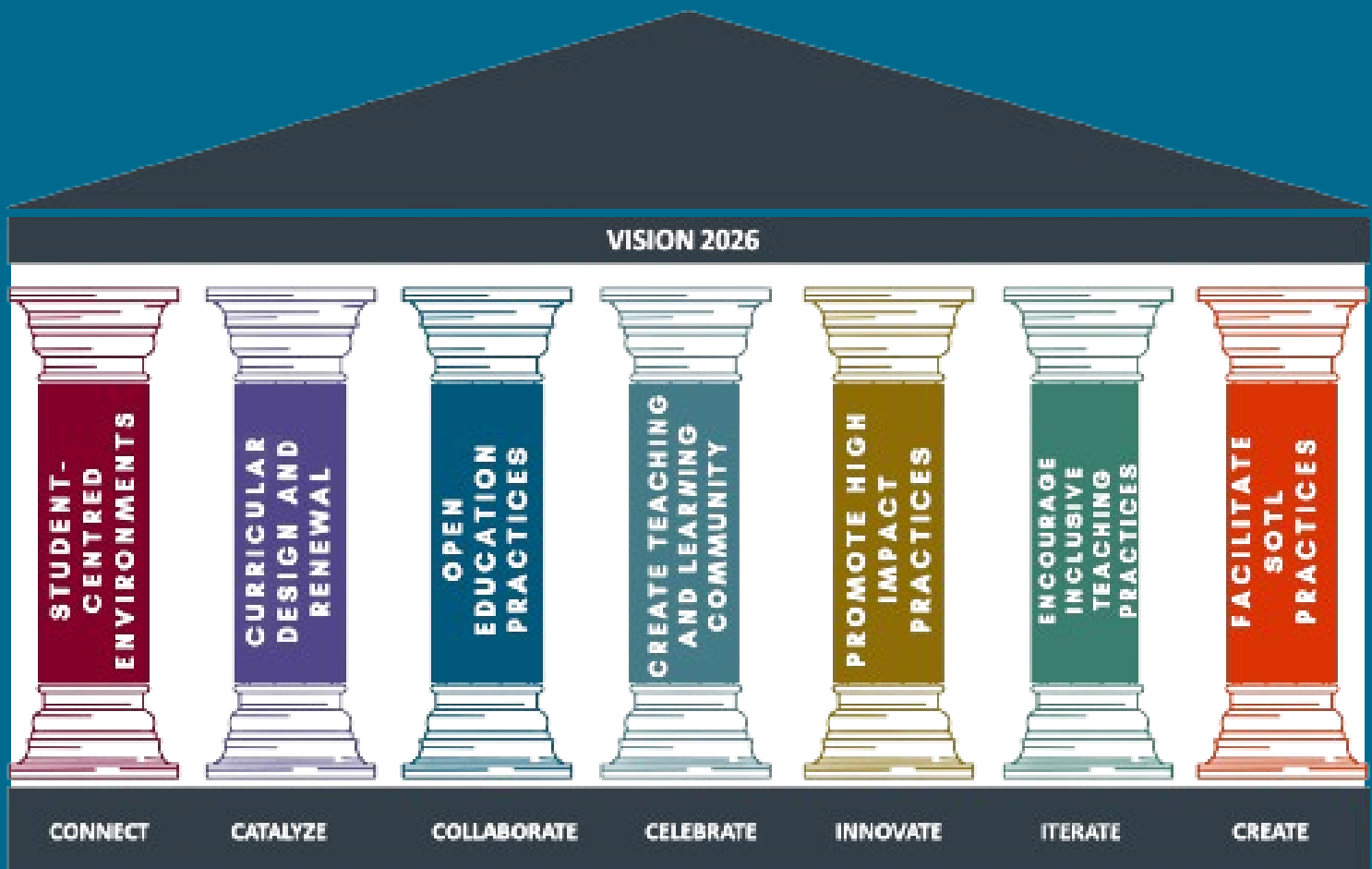
3	Introduction
4	Opening Remarks
5	Pillar 1: Student-Centered Environments
6	Pillar 2: Curriculum Design and Renewal
7	Pillar 3: Open Education Practices
8	Pillar 4: Create Teaching & Learning Community
9	Pillar 5: Promote High Impact Practices
10	Pillar 6: Encourage Inclusive Teaching Practices
11	Pillar 7: Facilitate SoTL Practices
12	Closing Remarks and A Look Ahead



Introduction

Welcome to the KPU Teaching & Learning Commons (T&L Commons) first annual report. In Feb 2023, Dr. Leeann Waddington became the Associate Vice President, Teaching & Learning and continued the work of developing and finalizing a strategic plan for the T&L Commons. This plan aims to clarify the scope of work provided by this unit. It sets strategic goals for the areas of service that are aligned to the KPU Vision and Academic Plan. The resulting identification of seven pillars became the cornerstone for operational planning and the structure of this report.

Learn more about our strategic plan by [clicking here](#).



AVPTL Opening Remarks

As the world continues to change and exert pressure on higher education institutions, Teaching and Learning centers have a vital role to play – namely to inspire a focus on the design of learning experiences that support students in the achievement of their academic goals. This is no small task. It requires a vision for change, a willingness to be a catalyst, the creation of a community that is ready to innovate, share and mix things up. And of course, lots of resources and professional development.

The team in the Teaching & Learning Commons (T&L Commons) aims to do this work through active intentional partnering across KPU

departments and with sector partners outside the institution. The department consist of four groups: The leadership team, administrative support professionals, learning technology systems analysts, and teaching and learning strategists, each with a variety of foci. Our team maintains expertise in events and communications, pedagogy, technology, instructional design, and teaching practice. They develop themselves as professionals through review of the literature related to their assigned foci, attending and presenting at conferences, and subsequently sharing their learning with one another and our colleagues across the institution. They provide consultation to individual faculty and departments, offer feedback, provide instructional design expertise, and work on a variety of KPU committees; including student success, the President's Diversity and Equity Committee (PDEC), program review, curriculum, and technology projects to name a few.

This report aims to provide both a look at our progress on the T&L Strategic Plan and a glimpse to the future of what we hope to achieve next. At the core of our work is our relationships with others. There is no denying the challenges that change brings, but there is also no doubt in my mind that it is better if we do it together. Through dialogue, we can develop understanding, foster vulnerability, and imagine possibilities for future educational experiences that far surpasses the ones of the present and the past.

Sincerely,
Dr. Leeann Waddington



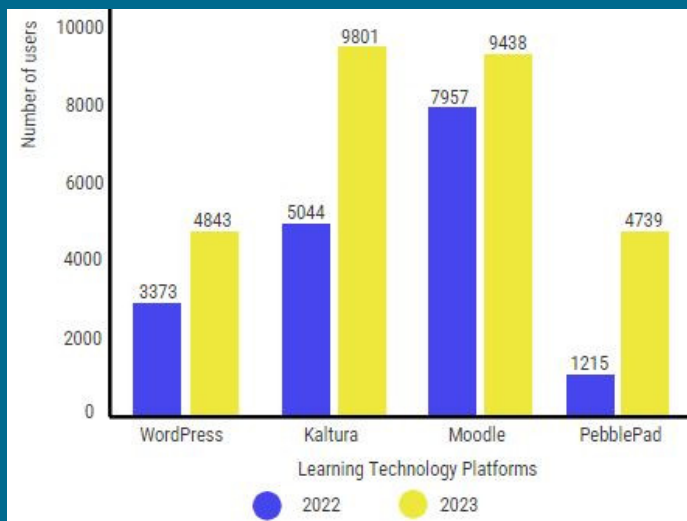
Pillar 1: Student-Centered Environments

The student-centered environments pillar promotes and supports the experimentation and adoption of secure, ethical, and effective educational technologies. During the past year, our team re-designed the structure of our instructional technology ecosystem to identify the pedagogy of the technology, and to provide an overview related to ethics, privacy and other considerations. The Teaching & Learning Commons (T&L Commons) supports a robust ecosystem of technology platforms for instructional purposes. Learn more by [clicking here](#). This year, we added Draft Coach by TurnItIn, revised our Moodle infrastructure to have separate servers for key purposes, launched Padlet, and continued our efforts to advance the use of PebblePad ePortfolios across programs.

This year, we partnered with the Information Technologies (IT) team to develop integrated structures and systems for effective learning environments such as the upgrade to Moodle 4.1, tech-enhanced classrooms and the subsequent scheduling revisions, podcast studio, and the recording studios.

For more information on these new technology spaces, click the links below:

- [Technology enhanced classrooms](#)
- [Recording studios](#)
- [Podcast studio](#)
- [Lightboard studio](#)



Technology Use by Platform 2022 to 2023

WordPress: 43.6% increase

Kaltura: 94.3% increase

Moodle: 18.6% increase

PebblePad: 290% increase

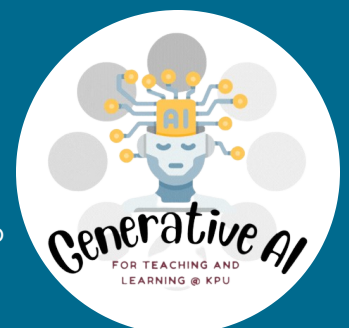
Zoom meetings hosted: 85.7% increase

BigBlueButton meetings hosted: 62.1% increase

The graph above compares technology platform use from 2022 to 2023. WordPress had 3,373 users in 2022, 4,843 in 2023. Kaltura had 5,044 users in 2022, 9,801 in 2023. Moodle had 7,957 users in 2022, 9,438 in 2023. PebblePad had 1,215 users in 2022, 4,739 in 2023.

Generative AI

The year started off with a bang with the release of ChatGPT, raising many questions about curriculum, pedagogy, academic integrity, and the role of educators. With many unknowns, we began the process of creating guidelines for use of generative AI by KPU educators. [View the full guidelines here](#). The AVPTL was invited to present our guidelines to the BC Provosts and the Higher Education Strategy Associates (HESA) AI Observatory webinar. These guidelines continue to evolve and be updated on a regular basis with recent additions providing example learning activities and assessments. We also launched a Community of Practice to engage interested participants in dialogue and learning. Finally, we launched the LinkedIn Learning playlist to support foundational knowledge development while we prepare a series of workshops that will launch in 2024. [View our LinkedIn Learning playlist here](#). (Sign into your KPU LinkedIn account to view.)



Pillar 2: Curriculum Design and Renewal

The team supports course design that is student-centered, flexible, inclusive, and engaging through workshops, resources, and individual consultation. The 2022 release of the Foundations of Teaching Excellence series of asynchronous courses had slow uptake and was revised in 2023 to separate each of the 5 modules into parts A and B and embedding them in a pilot for faculty onboarding to Teaching & Learning in fall 2023. We continue to promote this series as the core elements of establishing learner centered practice. Subsequent professional development can go in many directions depending on faculty teaching values, personal interests, and related disciplinary practices.

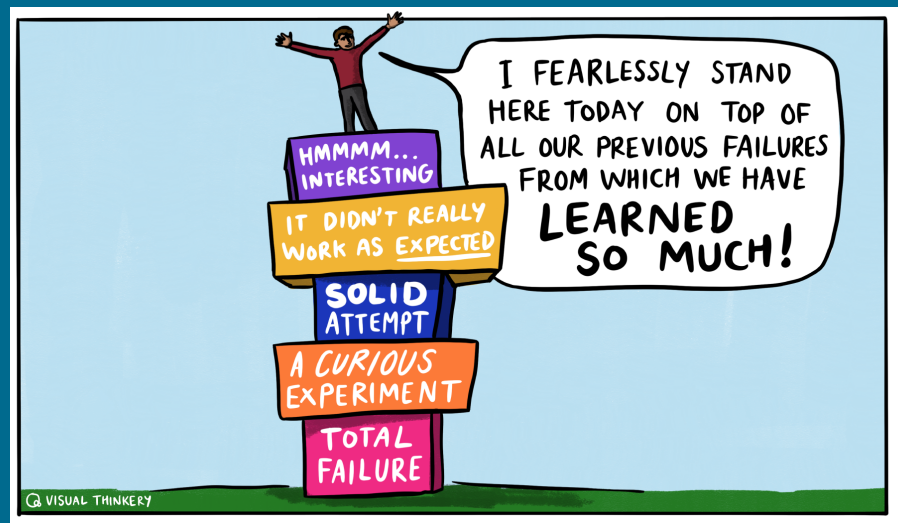
In 2022, Teaching & Learning Commons (T&L Commons) became more involved in the supports for continuous curricular and instructional design improvement during program review & revision. In the fall, we launched a pilot workshop to support departmental program review teams with the completion of their self-study guide, specifically the curriculum mapping portion. This was a huge success, and we now run this workshop every semester with each new group that is launching their program review.

In the spring, we also launched asynchronous resources for use in these workshops and more broadly. Click the links below to learn more:

- [Curriculum Guidance](#)
- [Curriculum Mapping](#)
- [Learning Outcomes](#)

A key focus this year was establishing partnerships to support promotion of course design that supports academic integrity. Since the academic integrity team sits outside the T&L office, we regularly engage with them to identify and create resources and learning opportunities to support faculty and to find ways to embed these in our platforms.

The final goal in this pillar is to encourage and support inclusion of UN SDG in KPU teaching practice and student learning. In 2023, there was one UN SDG fellowship awarded, which was the inspiration for UN SDG champions, which began in 2024. The goal of this was to support faculty in assignment design, outcomes revision, and course activities development that embed the UN SDG.



Pillar 3: Open Education Practices

In 2023, our zero textbook cost (ZTC) initiative continued to grow. A total of 499 instructors chose to teach their courses using resources that are free for students. This represents an increase of 82 instructors from 2022. This additional instructor engagement increased the number of ZTC sections from 854 in 2022 to 1,002 in 2023, resulting in a 17.3% increase. Consequently, this resulted in approximately \$3.34 million in savings for students. Learn more about ZTC by [clicking here](#).

Teaching & Learning Commons (T&L Commons) shares the work of our department openly with external partners. CC licensing of all T&L resources is our default practice as we desire to share our efforts with others. We also utilize OERs from others as a starting point for needed resources at KPU in order to optimize our efficiency and sustainability. This has resulted in increased partnership with BCcampus, the KPU library, other BC post secondary institutions.

In 2023, we piloted an Open Education Student Ambassador program. The purpose was to increase student awareness about open educational resources and to gather impact statements from students about how the use of OERs in their courses benefited them. Read student impact statements by [clicking here](#).

Advancing the Adoption of Open Educational Resources

In 2023, nine OER grants were awarded, providing support to the creation and adaptation of an OER. This resulted in \$76,500 provided to faculty to generate these new open education resources.

Newly Published Open Education Resources

Click the links below to visit the resources

- [The Ancient and Medieval World](#)
- [Introduction to Criminology](#)
- [La hora del cuento en español](#)
- [Cases in Social Issues](#)
- [Gender in Canada](#)
- [¡Voy en camino! - Spanish Language and Intercultural Learning](#)
- [Stitched - sewing techniques, how-to, and more](#)
- [Lorrain's Logbook](#)
- [Political Ideologies](#)



Pillar 4: Create Teaching and Learning Community

Teaching & Learning Commons (T&L Commons) fosters a community of educators and facilitates sharing of practices by building internal and external relationships. Communities of Practice and content development time releases were provided to engage KPU faculty with expertise in strategically aligned areas to create resources for use across the institution. We also engaged a group of faculty in what began as a Trauma Aware Pedagogy initiative and was reshaped to focus on the intended outcome of being trauma aware, namely the development of Compassionate Learning communities for both faculty and students. This team of three created a report and recommendation to the AVPTL in spring 2023 and developed resources and delivered workshops in 2023/24 for both faculty and leaders.

Celebrate Teaching Innovation and Excellence

One of the ways that T&L Commons celebrated teaching innovation and excellence was by hosting events to showcase the exemplary work faculty have completed.

- Open Education Book Fair - May 2023
Faculty who published Open Education Resources welcomed KPU students and faculty to visit and learn about newly published online textbooks in a variety of disciplines.
- Information Station, September 2023
T&L Commons offered a sweet treat to faculty interested in visiting an information table that was offered at four KPU campuses. Engaging conversations and engagement provided faculty a better understanding of what the department offers.
- Partner Spotlight, November 2023
We hosted a lunch and learn to shine a light on some of the special projects from connections T&L built with other departments and faculty, and to showcase three ePortfolio initiatives supported through an extensive network of partnerships that connect us together.

Building Internal and External Relationships

In our department, we embarked on strength-based self and team building. The goal of this initiative was to build confidence of individual team members by recognizing their strengths and to normalize partnership with others in areas of their strength to foster synergy and increase efficacy of our projects and initiatives. The key partners program assigns a T&L strategist to each department chair for pointed communication once per semester. The goal was to develop working partnerships increasing the comfort to reach out and seek support and to facilitate planned professional development for departmental teams.



Visit our Community Corner!
Surrey campus, Arbutus 2400

Pillar 5: Promote High Impact Practices

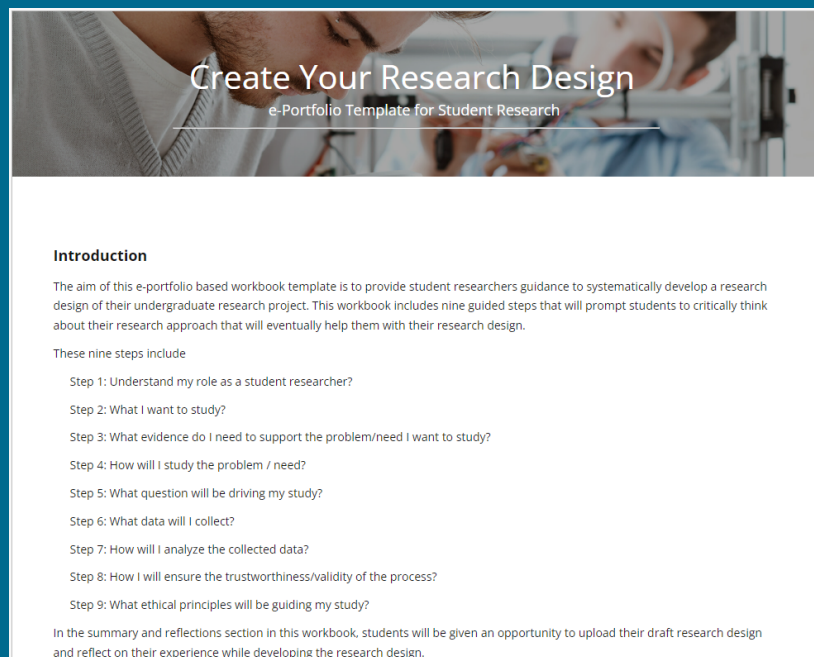
There are five high impact practices in this pillar, and for year one, we chose to focus on three.

First, we are working to continue our efforts to advance the use of ePortfolios. In Spring 2023, the Teaching & Learning Commons (T&L Commons) launched a pilot initiative granting single course time releases to ePortfolio



Click the image above to learn about the ePortfolio Advancement Strategic Plan 2022-2025

Champions across KPU. These allowed faculty to implement ePortfolio initiatives within their respective programs. Six champions were awarded. To learn more about their projects, [click here](#).



Second, we wanted to encourage and support the integration of undergraduate research in relevant KPU courses. This was done through a time release to create a teaching resource site and the creation of a PebblePad workbook on the research process can be used across to disciplines to support student learning activities related to research. Faculty can customize this workbook to reflect discipline specific language or release only certain steps of the process to scaffold student learning.

And third, we are continuing to find ways to support global learning initiatives. To this end, T&L engaged in the Collaborative Online International Learning (COIL) program to develop our expertise in supporting faculty partners to implement international virtual learning experiences in their courses. This initiative aims to enhance our students' global awareness and to equip them with the skills necessary to thrive in an increasingly interconnected world. We have developed a workshop and resource to encourage faculty to engage with COIL, providing them the tools and knowledge to effectively incorporate global learning experiences into their teaching practices.

Pillar 6: Encourage Inclusive Teaching Practices

In reflection of the two goals associated with this pillar, in fall 2023, KPU launched its [Accessibility Plan](#) in response to BC legislation. Teaching & Learning Commons (T&L Commons) reviewed that plan and noted 15 recommendations that align with our scope of work. Current projects that were already underway included technology enhanced classrooms, the use of Padlet, and a planned Moodle upgrade. We are currently exploring mind mapping tools to enhance our technology ecosystem, transitioning to default captioning and transcription for media creations, updated the [Technology Accessibility to Support Learning resource site](#), and provided training on the technology enhanced classrooms. We also began a project with the Office of Inclusive Communities to Adapt the Norquest College OER on AntiRacist Pedagogy. This project is well underway with anticipated release of a resource in fall 2024.

Our commitment to decolonize begins in our own learning and encouraging that within our team. We engaged in discussion on the purpose of territorial acknowledgements, in particular [personalized and transformational acknowledgements](#), and each month a team member prepared their own transformational acknowledgement to present at a team meeting. Encouraging personal reflection and practicing sharing in a safe space was the rationale for this initiative. In addition, the T&L Strategist and leaders attended the BCcampus Pulling Together workshop series for educational developers as well as the one for leadership. Learnings from this workshop was shared in [a blog post by Lisa Gedak](#).



Pillar 7: Facilitate SoTL Practices

The primary objective of this pillar is to develop human and system capacity to support the scholarship of teaching and learning. This year, we partnered with Office of Research and Scholarship to include SoTL in the KPU Research Advancement Plan. We also revised our Teaching & Learning Innovation Fund (TLIF) to include two streams; the new stream is time release for faculty conducting SoTL projects. [Learn more here.](#)

We also offered a new professional development workshop, Course Reflection and Redesign, which will continue to be offered on an annual basis or can be provided for teaching teams or departments at their request. We are grateful to have the opportunity to partner with faculty as they innovate their teaching practice.



TLIF Recipients

- Erin Ashenhurst, Big Pictures: Murals, Billboards, and Urban Interventions
- Jessica Bayntun and Team, Wilson School of Design Garment and Accessories Library
- Lee Beavington & Team, Wild Spaces
- Angelica Brzyska, Alternative Printmaking with Laser Cutting Technologies
- Michael Schanz and Team, KPU Social Innovation Incubator
- Fiona Whittington-Walsh, Supporting Different Ways of Knowing Via Forum Theatre
- Lindsay Wood, Untold Stories: Conversations with marginalized KPU students and alumni about belonging in WIL and academia

Staff Conference Presentations

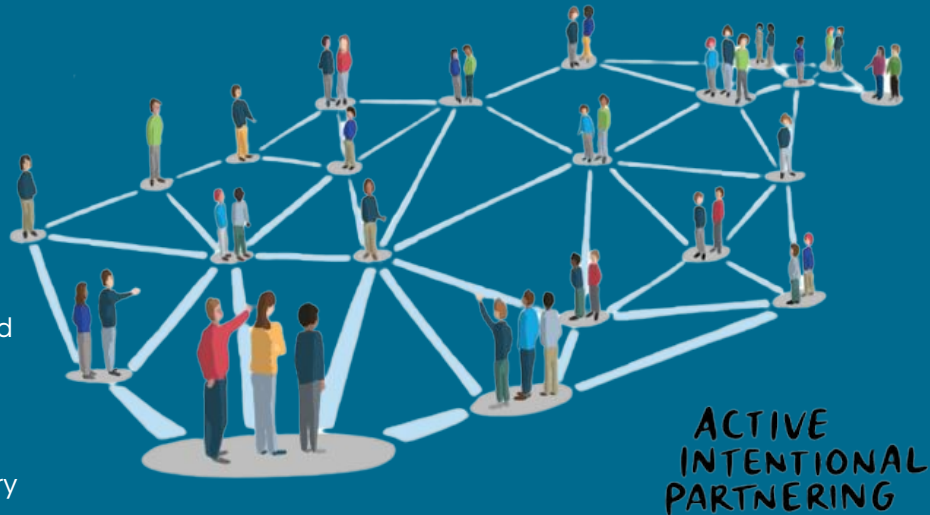
- Design Principles for Online Learning: National Validation Study, Hawaii International Conference on Education, (Gedak, L.)
- Positive Possibilities for the Future of Education: School Communities SOARing Together, Hawaii International Conference on Education (Gedak, L.)
- Building a Successful Framework for Faculty Buy-In of ePortfolios, AAC&U 2023 Annual Meeting & Forum on Open Learning (Gavilanez, P., Gedak, L., Sudlow, G.)
- The Possibilities of ePortfolios: An ePortfolio Advancement Plan, AAC&U 2023 Annual Meeting & Forum on Open Learning (Waddington, L.)
- UN SDG Fellowship Program, OE Global Conference (Grey, A.)

Time Release Recipients

- Compassionate Community: Sarah Duncan, Ross Laird, Maureen Lee
- Undergraduate research: Fabricio Telo
- ePortfolio Champions: Monica Affleck, Khairunnisa Ali, Elzhibeta Bohinska, Robin Cook Bondy, Simon Driver, Paola Gavilanez, Anjela Godber, Ann-Marie McLellan, Teresa Swan, Jovita Vytasek

Closing Remarks

We are proud of the work we have done individually and collectively to support faculty and thus indirectly the learners at KPU. We provided approximately 600 faculty consultation, 30 department PD offerings, offered more than 40 workshops/events and resolved 1900 technology support tickets. We are honored to have partnered with other KPU departments on their initiatives and with external partners such as BC Net, BC Campus and the Ministry of Post-Secondary Education and Future Skills. As we plan our goals for next year we are open to feedback and new partnered initiatives please provide input by emailing leeann.waddington@kpu.ca directly.



Looking Ahead

Our team is actively engaged in many new, exciting initiatives such as:

- Partnering with IT to develop technology governance structure and create ethical educational technology guidelines
- Developing a PD pathways structure to support faculty learning journeys
- Rolling out Simple Syllabus
- Developing a UN SDG teaching resources site and supporting UN SDG champions
- Creating a PebblePad Workbook to guide SoTL project development
- Establishing a Generative AI Steering Committee

Contact Information:



www.kpu.ca/teaching-and-learning



tlcommons@kpu.ca



[T&L Commons LinkedIn page](#)