



FOODSHED ANALYSIS: **An applied methodology in the Global South**

By: Sam Verm eulen, EkoRural



<https://groundahead.wordpress.com/2015/07/07/riobamba-chimborazo-the-king-of-the-andes/>



<https://www.intrepidtravel.com/adventures/ecuador-one-week-guide/>

Global Food Security in an Urbanizing World

By 2050, **2/3** of the world's population will live in urban areas.



In the next 20 years,



of the world's population growth will occur in developing nations.

80%



of food for cities comes from domestic sources in rural areas.

The poorest households in the developing world spend

60-80%



of their incomes on food.



THE CHICAGO COUNCIL
ON GLOBAL AFFAIRS

@GlobalAgDev | #GlobalAg
thechicagocouncil.org/globalag

“

“A foodshed analysis is a method to characterize the local, directional interactions between culture and the production, distribution and marketing of food.”



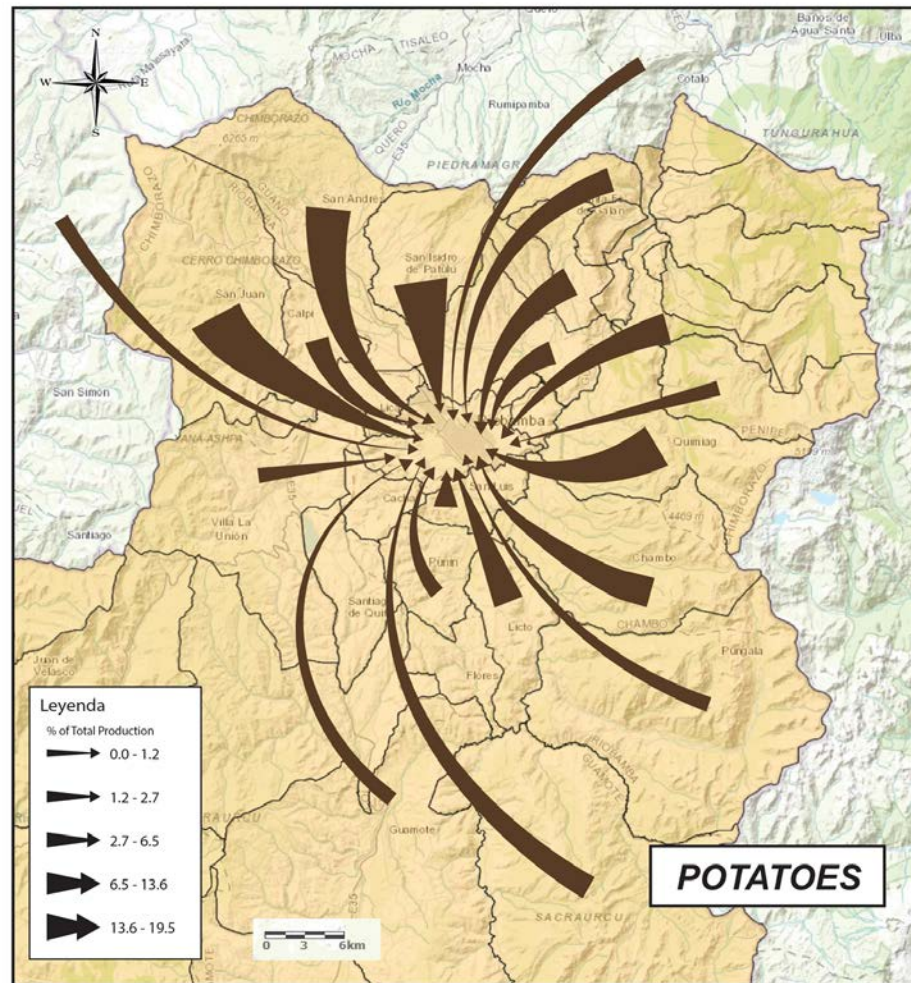
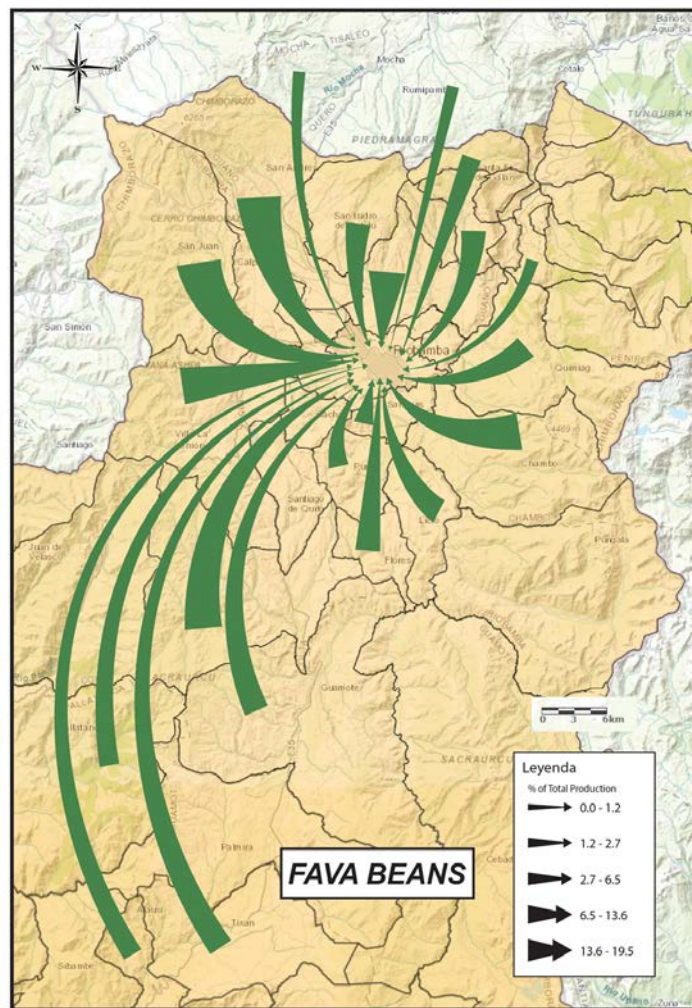
Rural/Production Model

Urban Modelling

Regional
Foodshed



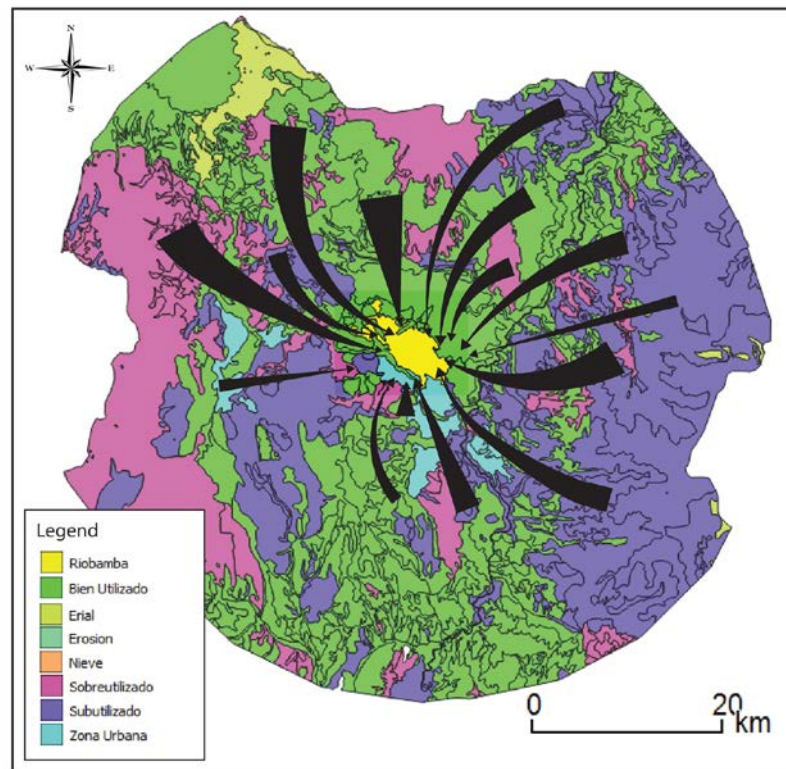
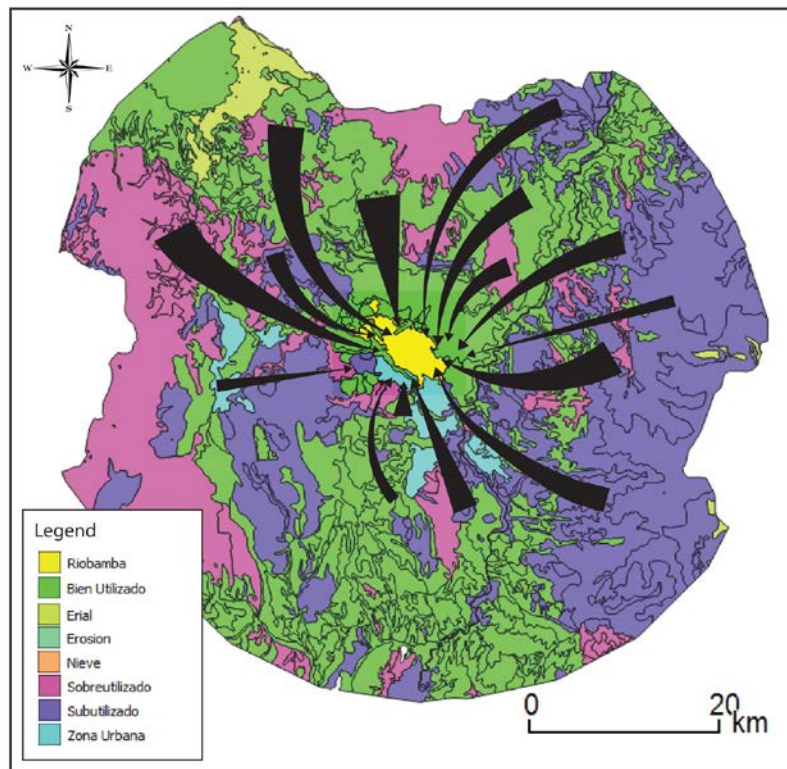


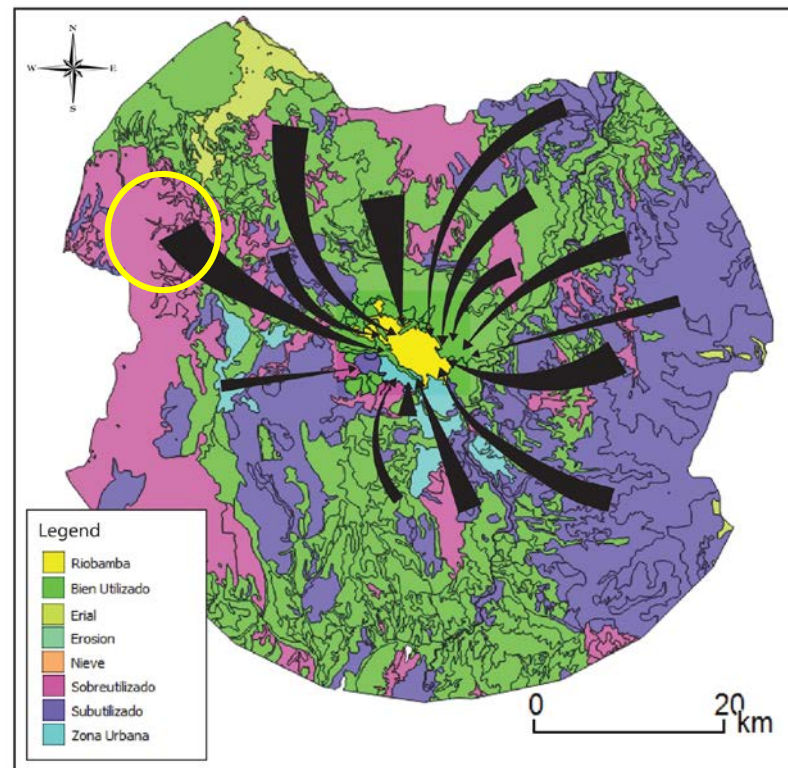
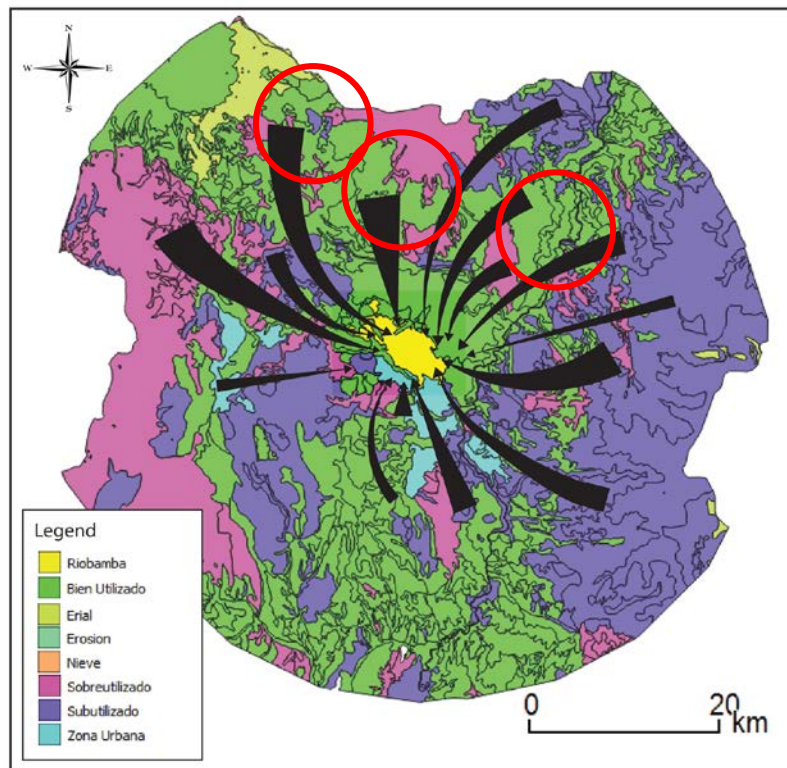


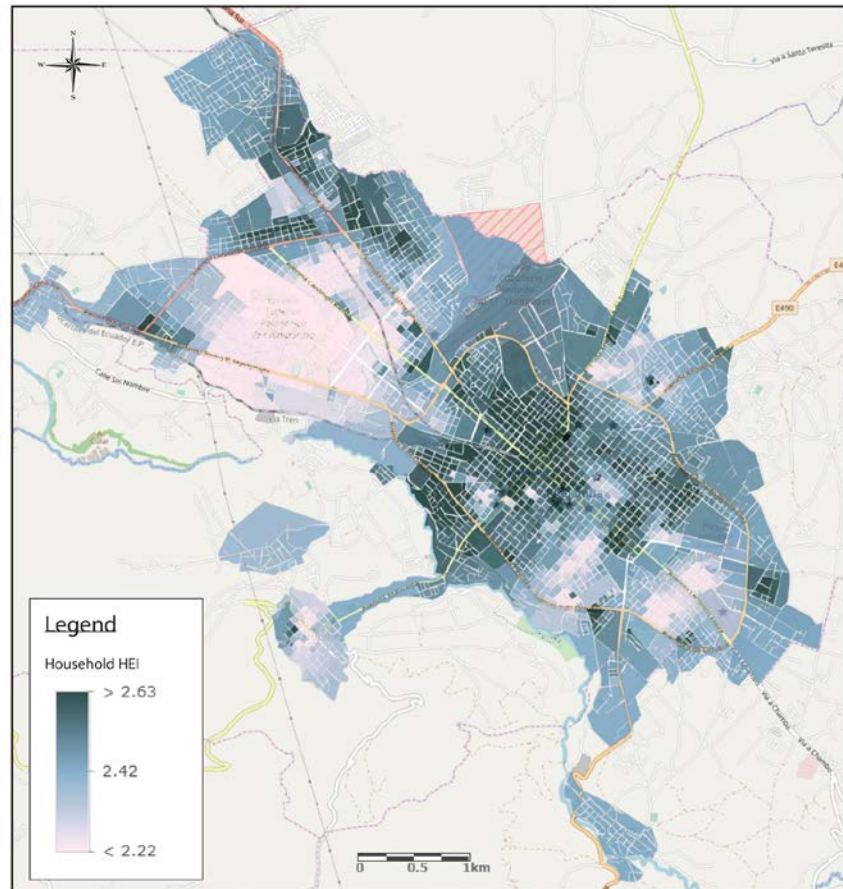
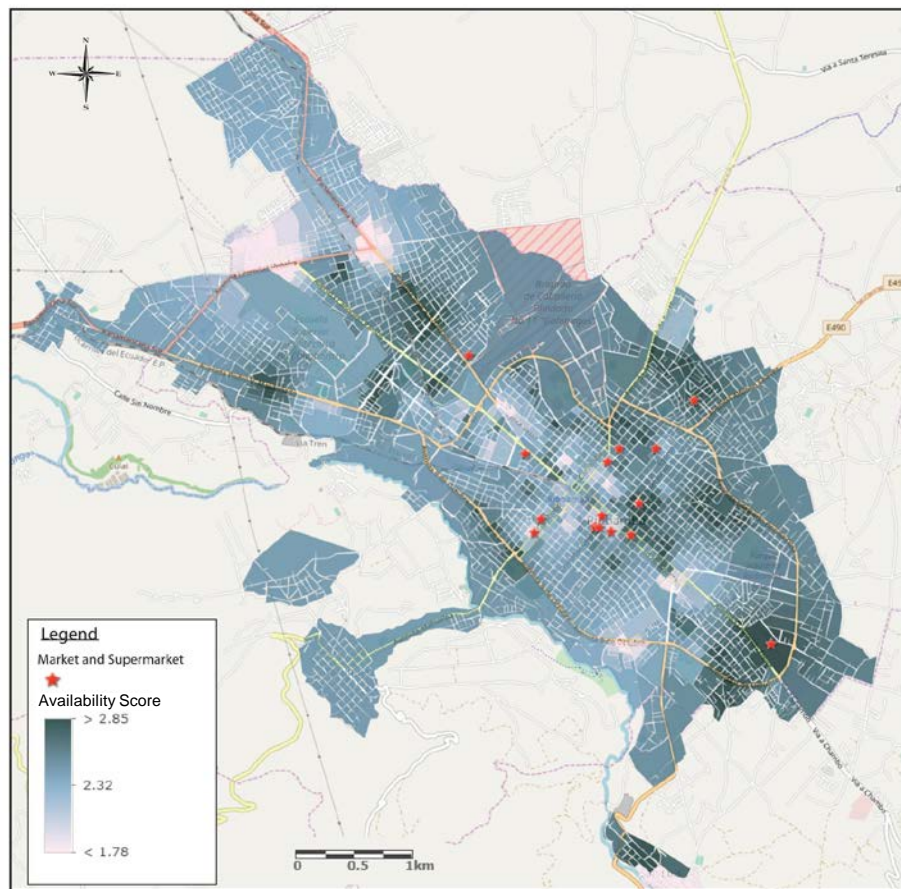


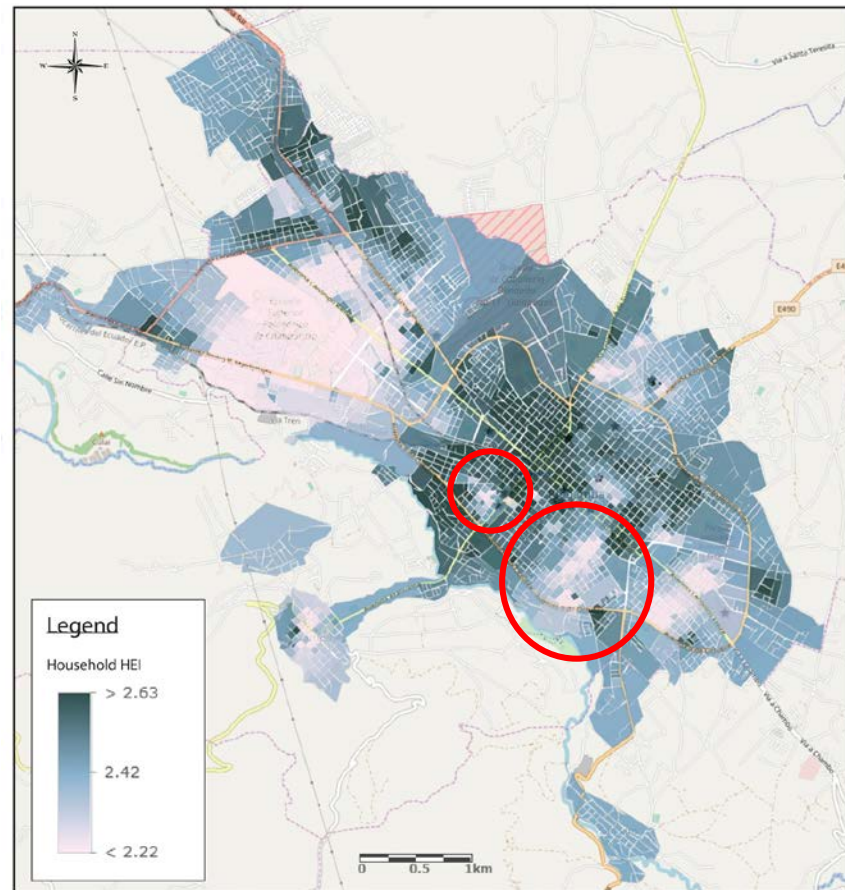
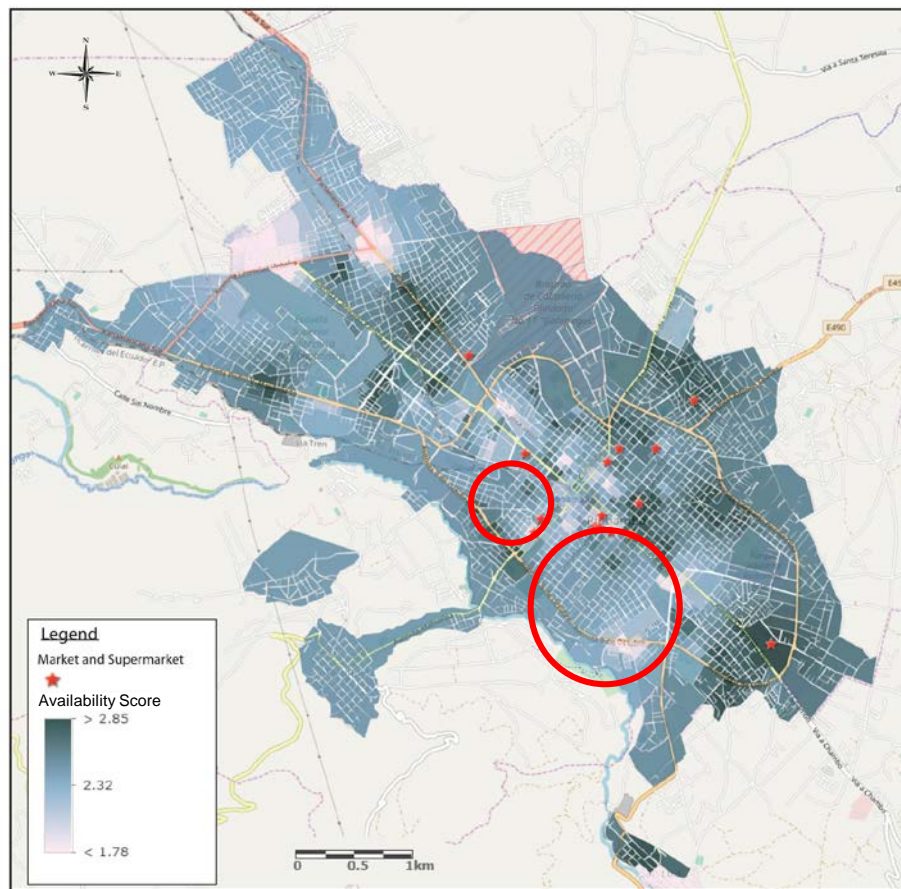
80%

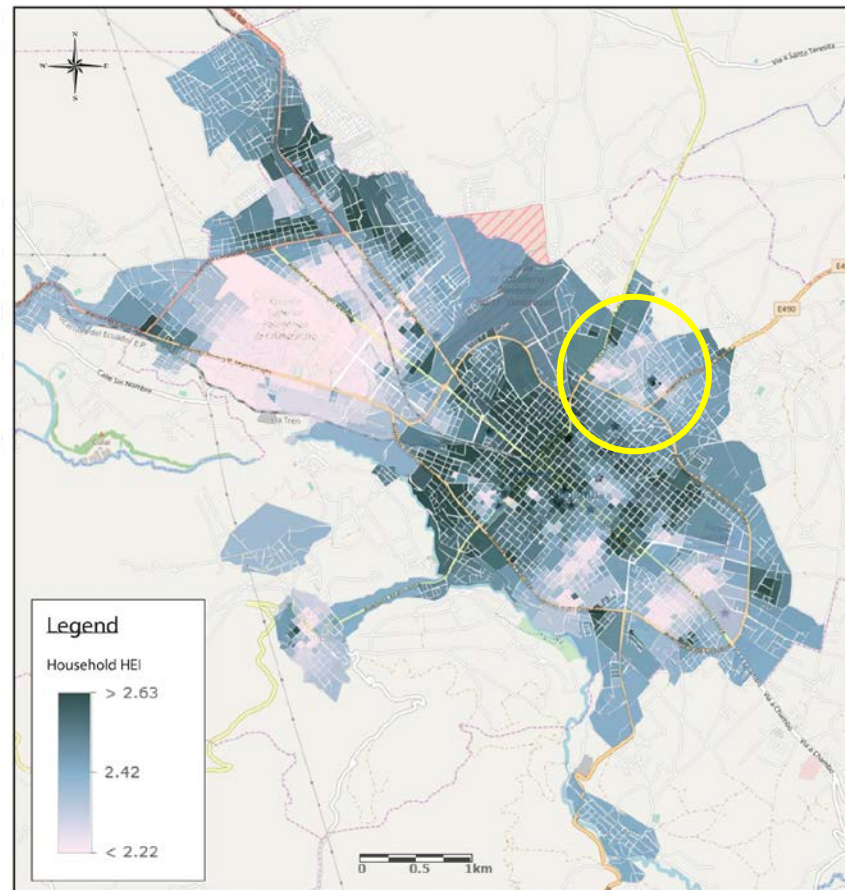
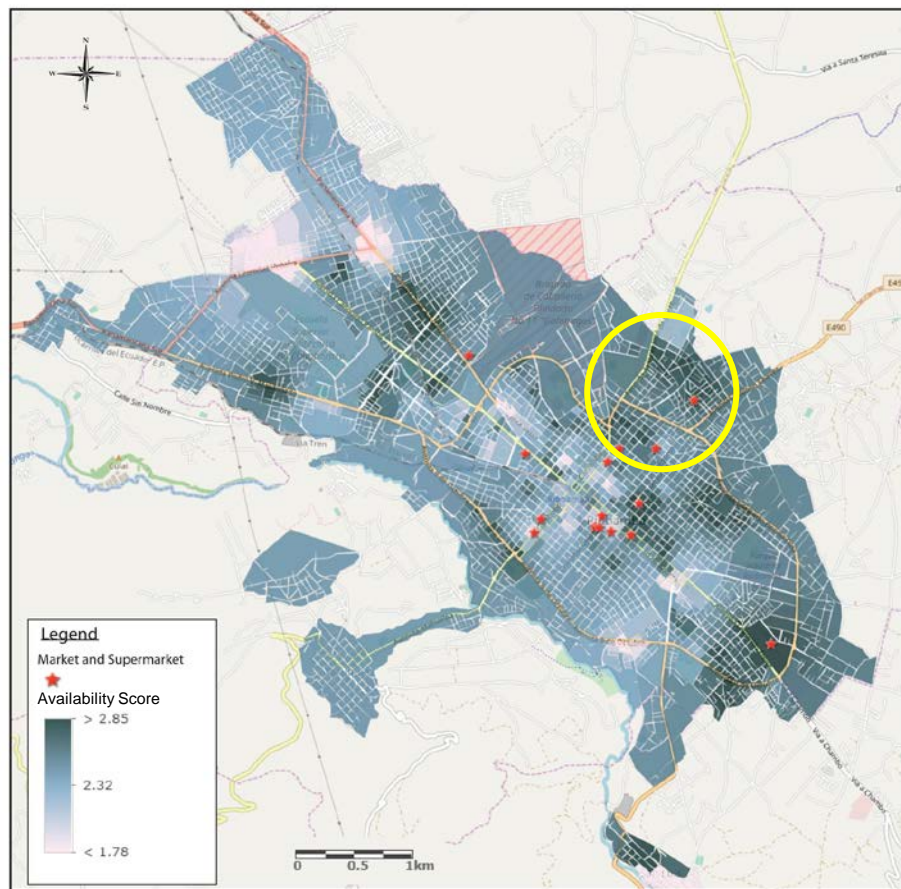
Of the region's products originate 25 km of the city
centre.











- Protocol to be used in greater Andean Region
- Open-source databases
- Integration of regional consumption models
- Emphasis on GIS capacity building of the organization and its partners

Thanks to:



EkoRural

