

WELCOME
TO THE
SHOW 2016

CHIP AND SHANNON WILSON SCHOOL OF DESIGN

BACHELOR OF DESIGN: FASHION AND TECHNOLOGY

2016 THE SHOW

PRESENTS
THE FINAL CUT

APRIL 6 2016 AT 4:30PM & 7PM
APRIL 7 2016 AT 1PM 3:30PM & 7PM

IMPERIAL VANCOUVER
319 MAIN STREET
VANCOUVER

KPU.CA/2016FASHIONSHOW/

PHOTOGRAPHY SPONSOR

christopher pike
PHOTOGRAPHY

GOLD SPONSORS



KPMB + public



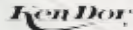
SILVER SPONSORS



BRONZE SPONSORS



ARC'TERYX



MEDIA SPONSORS



PRESENTED BY

TAMODA
apparel inc.

PLATINUM SPONSOR

CF Richmond Centre



CLASS OF 2016



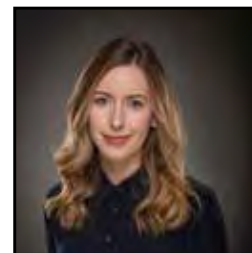
Iris Park



Bena Yang



Claire Corneau



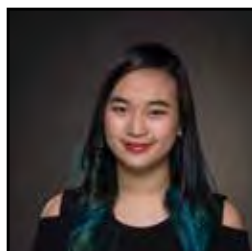
Madeleine McKibbin



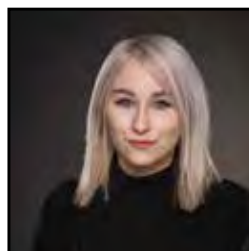
Kimberley MacFarlane



Cherry Lu



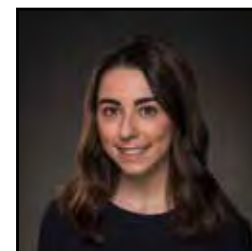
Jasmine Su



Alissa Segal



Jamie Dawes



Kaitlyn Schreiner



Venessa Clarke



Tina Liu

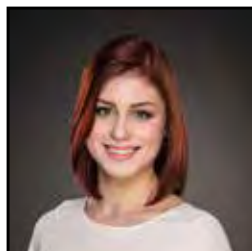


Tamara Grunberg

CLASS OF 2016



Marita Paul



Yuliya Yaremenko



Laura Hutchison



Catherine Kilgour



Sara Lowe



Jessica Ternowski



Sara Jonsdottir



MacKenzie Trimble



Nicole Boyer



Hayley Clackson



Justine So

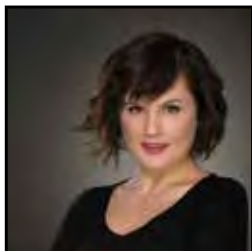


Krista Prendergast



Justine Elves

CLASS OF 2016



Breanne Gatien



Meghan Berry



Shyan Owtram



Parinaz Mistry



Amanda Carter



Claudia Demcak



Rinske Smith



Ashley Morin



Alicia Williams



Samantha Stringer

IRIS PARK

The designer has a Korean heritage and builds her line with inspiration surrounding her life. She likes to break rules and enjoys manipulating a garment in unconventional ways. Her passion besides apparel design consist of animal rights and believes in being the change she wants to see.

irispark@live.co.kr
@noirxblanc_





DESIGNER: IRIS PARK
AUTUMN 2017

Noir Blanc's Unscripted Autumn 2017 Collection is about expression of uniqueness rather than functionality. Every season's theme is drastically different from one another, never confining creativity.

Unscripted's theme is Korean Hanbok, it takes the traditional dresses silhouettes and fullness to recreate a modernized art piece using 3D detailing and laser cutting technology.

THE SHOW/ 2016

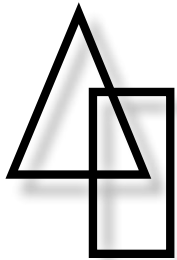
MORE INFO.

BACK TO DESIGNERS

BENA YANG

Design is to express one's personality, creativity and to inspire other people. This is what motivates Bena to be creative in design. She is inspired by geometric details from everyday life: people on the streets, nature, friends and family. During Bena's studies at Kwantlen, she was exposed to different technologies that lead her interest in combining technical apparel with fashion.

Benayang00@gmail.com



METRIX





FALL/WINTER 2016
DESIGNER: BENA YANG

METRIX is an innovative menswear brand that creates functional, quality and comfortable clothing. METRIX combines formal and casual business wear with technical components such as water resistant, wrinkle-free and machine washable for the West Coast professionals working in the tech industry. Each piece is able to be dressed up or down, versatile in weather conditions and designed to be unique in its own way.

Photography: Jasmine Siu

THE SHOW 2016

MORE INFO

BACK TO DESIGNERS

CLAIRE CORMEAU

Claire strives to make fashion more inclusive. She cultivates deep empathy for markets she designs for. Claire was selected by KPU faculty for the most original collection with the John Fluevog "Unique Soles" award. When not in her studio, she is road biking or hiking up a mountain. She has a strong connection to the outdoors.

clairecormeau@gmail.com
CLAIRECORMEAU.COM

Nuage





Nuage

AUTUMN/WINTER 2016
DESIGNER: CLAIRE CORMEAU

Nuage questions conventions and subverts elements of wardrobe staples through ageless ready-to-wear. Age should not define us. This season, Claire reflects upon her Belgian heritage and unites her cultural experiences with her love of the surrealist artist Magritte. She challenges us to refamiliarize ourselves with wardrobe staples. Claire's 3D printed jewelry further exemplifies her design through a surrealist lens.

THE SHOW/ 2016

MORE INFO.

BACK TO DESIGNERS

MADELEINE MCKIBBON

"My passion is to create objects with intrinsic value; objects that enhance experiences, promote connection, provoke thought, and inspire emotion. I am always searching for harmony between pragmatism and aesthetics."

mckibbon.madeleine@gmail.com

m a i s o n m a r g o t



maison margot

SPRING/SUMMER 2017

DESIGNER: MADELEINE MCKIBBON



Maison Margot was developed based on the philosophy of slowness and the principals of wabi-sabi to create clothing for women who appreciate the subtle, natural variations present in handmade objects. The Maison Margot aesthetic finds balance through asymmetry, beauty in nature, and depth in simplicity. Maison Margot was created for women who want to buy less and wear more, for those who seek a pared-down wardrobe of exceptionally made pieces.

The Maison Margot woman appreciates clothing that is rich with narrative and soul. One who is reflective in nature, she seeks an emotional connection with her clothing.

She is not moved by “the cult of speed” and doesn’t recognize meaning in mass-produced fast-fashion but rather, in clothing that bears the trace of human hands and honours the art and craft of design. She sees value in pieces that can be worn, adjusted, mended, and kept for a very long time; pieces that get better as they age.

THE SHOW 2016

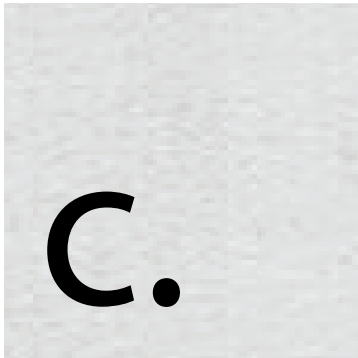
MORE INFO

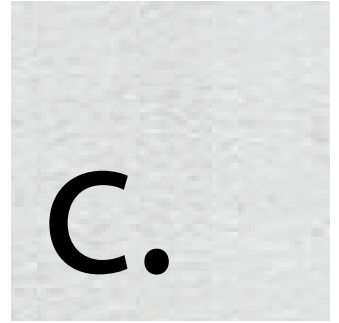
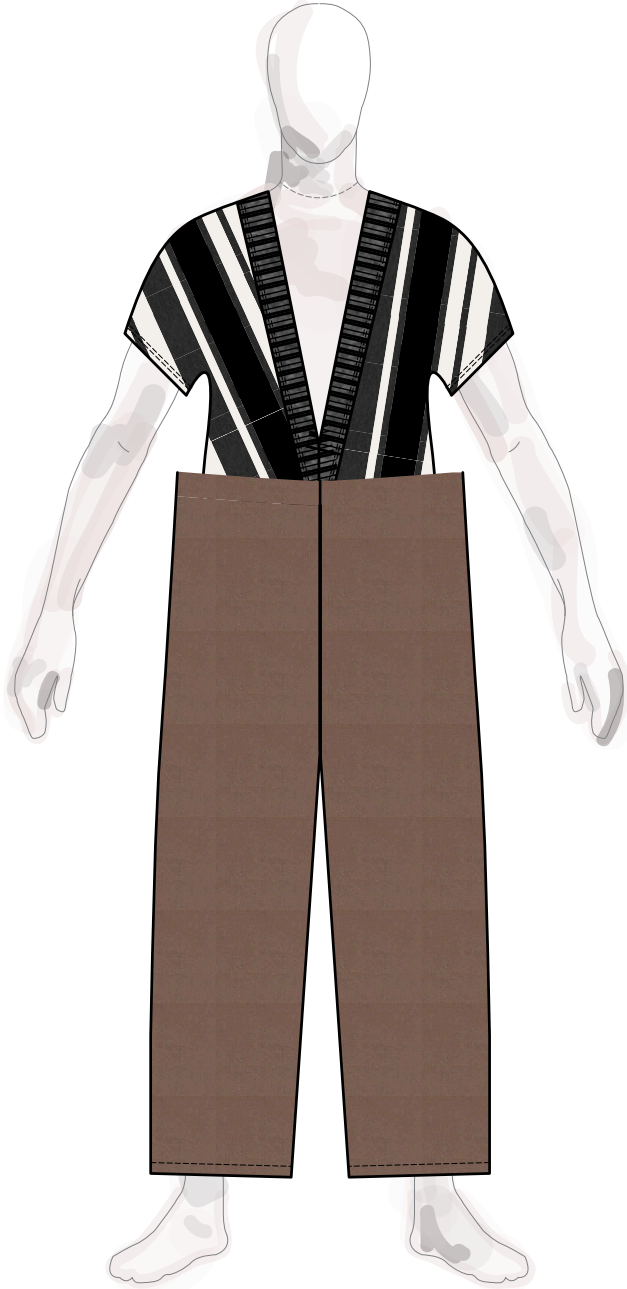
BACK TO DESIGNERS

KIMBERLEY MACFARLANE

Kim's background spans several different sectors in the fashion industry, but she has always been drawn to design. Constantly inspired by the unknown, she thrives off of radical change and genre-defying ideas. A tireless learner, she aims to gain more design experience while continually evolving as an individual.

macfarlane.k.d@gmail.com





FALL 2016

DESIGNER: KIMBERLEY MACFARLANE

Clothe is for those who live a genderless or non-binary lifestyle, eschewing traditional definitions of gender for a more fluid and individual self-image. Clothe is dedicated to creating genderless & seasonless clothing, opting for pieces that last longer and create less waste. The Fall 2016 collection focuses on dramatic silhouettes and proportions with an eye towards quality materials.

THE SHOW/ 2016

MORE INFO.

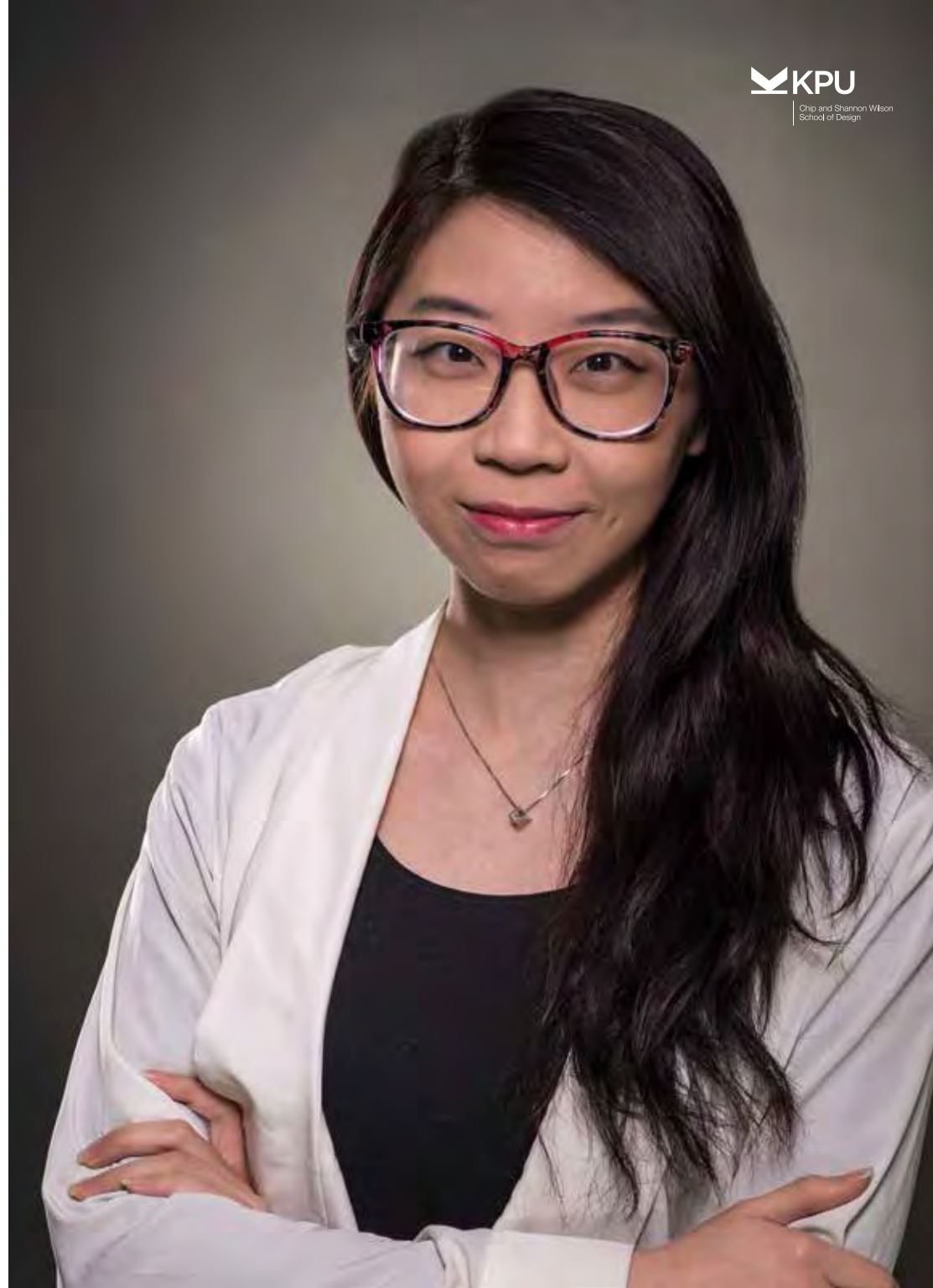
BACK TO DESIGNERS

CHERRY LU

As an international designer, Cherry Lu, who has a Chinese background and apparel industry internship experiences, fell in love with the art of solving design and pattern puzzles at KPU. Cherry has a diploma in Fashion Merchandising from Blanche MacDonald Center, which complements her design skills. Cherry brings cross-culturalism into her designs.

cherryloga@hotmail.com

IMPERFECT
— A Silent Revolution



Falling, drowning, suffocating ...
Maybe a moment you suffer,
Yet it is not an end.
Touch ground and rebound back
for another breath of life.



IMPERFECT

— A Silent Revo-

FALL 2016

DESIGNER: CHERRY LU

IMPERFECT is a lifestyle brand for individual women, featuring distinguished leisure wear that is multi-wearable. The philosophy behind IMPERFECT brings sentimental value to apparel. It is not only a clothing line, but also a silent revolution for celebrating differences and reflecting individuality.

THE SHOW/ 2016

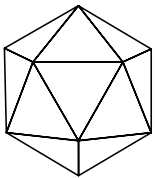
MORE INFO.

BACK TO DESIGNERS

JASMINE SU

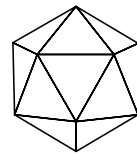
Jasmine fell in love with the art of garment construction while taking a textiles course in high school. Her love grew after entering the Fashion Design and Technology program. Through this program, she has obtained a wide array of skills from garment design and production to textile and surface design. In her third year, she was given the opportunity to intern in the textile surface/graphic design department at Kit and Ace, which improved her technical skills in Adobe Creative Suite. After graduation, she hopes to find a job in design, product development or pattern drafting in Vancouver.

jasmine.su@kwantlen.net



SACRED





SACRED

SPRING/SUMMER 2017

DESIGNER: JASMINE SU

SACRED offers modern, experimental streetwear for the creative professional who is always on the go. Through merging fashion and function, we create products that can last and move with our market's active lifestyle while keeping her comfortable.

Makeup/Hair: Jasmine Su
Model: Jasmine Su

THE SHOW/ 2016

MORE INFO.

BACK TO DESIGNERS

ALISSA SEGAL

Alissa's pursuit of an education in fashion has taken her around the world. Her design aesthetic and view of fashion was inspired by her travels and the people met along the way. Alissa believes in fashion as an escape, and chooses to design for those who are sartorially fearless. She believes in fashion as an art form, which made the transition from fine arts almost organic.

alissasegal@hotmail.com



LIMINALITY FALL/WINTER 2016



FALL/WINTER 2016
DESIGNER: ALISSA SEGAL

Liminality is a unisex line. Unlike most current unisex lines, it will not lean closer towards the male gender but instead has a balanced representation of the two. Unlike androgyny, that is used to dramatize cross-gender tensions, this line creates a harmony between the two. Each garment focuses on aspects of clothing that are traditionally associated with each gender.

*Model: Jennifer Wilson and
Finn Hulten*

Photography: Brent Fulton

THE SHOW 2016

[MORE INFO](#)

[BACK TO DESIGNERS](#)

JAMIE DAWES

Jamie Dawes is a Vancouver based designer whos main focus is to change our “fast fashion” mindset.

jamielawes@gmail.com

@ramiejawes

A WART





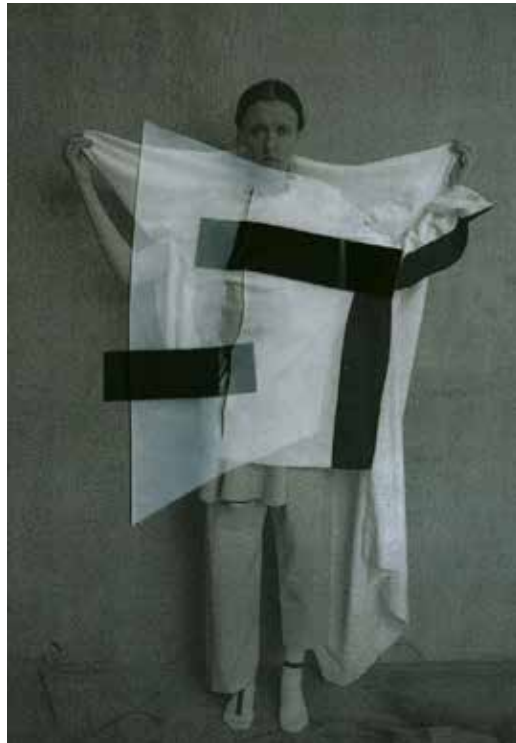
A:WART

SPRING 2016

DESIGNER: JAMIE DAWES

Designed for the Eco-conscious woman who wants to influence the way she is perceived through her style. She wants to use her fashion choices as a tool to fuel awareness about consumer waste in our society.

Made from 100% upcycled materials; all fabric comes from second hand clothing, deadstock, or overrun fabrics from factories around Greater Vancouver. A Ware gives you the oppourtunity to have your clothes say an important message. Each garment is a silent activists projecting your true values. Our product reinforces that you can make a difference and change the way that ethical fashion is perceived. It can be forward, fashionable, relevant, and rewarding.



Photography: HART+LESHKINA

THE SHOW/ 2016

MORE INFO.

BACK TO DESIGNERS

KAITLYN SCHREINER

Kate followed her Grandmother and Great-Grandfather's steps who both have an extensive background working in the textile industry. She has been interested in design since an early age which soon developed into a love for fashion and style. Kate has dedicated the last nine years to an extensive education in conceptual and technical garment design, drafting, and construction, and has a vast knowledge of the overall fashion industry.

kateschreinerdesign@gmail.com
@hetkidesigns

hetki / a moment



While studying abroad in Helsinki, Finland, Kate found her design aesthetic develop in a new way which provided an immense amount of inspiration for her collection. Hetki / a moment is a Scandinavian inspired contemporary women's wear brand that



hetki / a moment

2016/2017

DESIGNER: KAITLYN SCHREINER

While studying abroad in Helsinki, Finland, Kate found her design aesthetic develop in a new way which provided an immense amount of inspiration for her collection. Hetki / a moment is a Scandinavian inspired contemporary women's wear brand that puts an emphasis on slow fashion by creating pieces that blur the lines between seasonal trends. Each garment focuses on quality and longevity by pairing modern fabrics and prints with classic styles and silhouettes, with unique detailing.

Model: Jessica Chauhan

Photography: Jessica Chauhan

Photography: Kate Schreiner

THE SHOW/ 2016

MORE INFO.

BACK TO DESIGNERS

VENESSA CLARKE

Venessa has been a creative thinker from a young age. She has been interested in fashion since she was in high school and came to BC from Toronto to further develop her skills in fashion and design.

venessam.clarke@gmail.com





FALL/WINTER 2016
DESIGNER: VENESSA CLARKE

Collection: Brilliant Brush
Mirth designs coats and jackets for women who love to be colourful and bold. Mirth provides radiance, diversity and a sense of happiness to each piece. The Fall/Winter 2016 collection Brilliant Brush will be incorporating faux fur for woman who love the luxury of fur but are against animal cruelty.

*Model: Toni McIntire
Makeup/Hair: Toni McIntire
Photography: Susan ZT Sun
Photography*

THE SHOW 2016

MORE INFO

BACK TO DESIGNERS

TINA LIU

The designer Tina Liu was born in HsinChu, Taiwan and moved to Canada at the age of 11. Her designs are inspired by abstract shapes and 3D elements. Tina discovered her interest for fashion during her sewing course in high school.

tina.liu1026@gmail.com

LITTLE EARTHLINGS



LITTLE EARTHLINGS

FALL/WINTER 2016
DESIGNER: TINA LIU



Little Earthlings is a gender-neutral children's wear line that consists of fun pop-out appliqués and colorful palettes. The collection thesis is to liberate the children's imagination by having them play with fashion without the stereotypical restrictions on color or style. The garments are made with comfortable and durable fabric so they can be handed down.

THE SHOW 2016

[MORE INFO](#)

[BACK TO DESIGNERS](#)

TAMARA GRUNBERG

**Tamara Grunberg is a child prodigy
at the age of 21.**

tamaragrunberg@hotmail.com

Instagram @rickrafsimons

CHERRISH
SPORT





CHERRISH SPORT

DESIGNER: TAMARA GRUNBERG

We're individuals playing our own game, without any rules or restrictions. We aren't looking for something new but we are looking for something authentic and real.

Be yourself and we mean it. We want cherrish sport to belong to the city but to spread worldwide. We work together to push creative boundaries and encourage our creative collective. We are not defined by age,orientation, race or religion. Instead choosing to accept all while making our own definitions of ourselves.



THE SHOW/ 2016

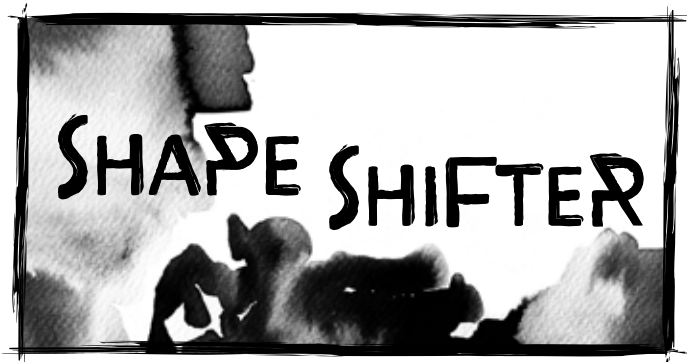
MORE INFO.

BACK TO DESIGNERS

MARITA PAUL

It all started with an aquamarine hat. The hat was Marita's first sewing project and she was hooked. After a yearlong exchange in Germany, Marita wet her feet in a fashion diploma program before pursuing her degree. Marita thrives in creative problem solving, enjoys CAD pattern drafting, and hopes to make positive change in the industry she loves.

marita.paul@kwantlen.net





SPRING/SUMMER 2017
DESIGNER: MARITA PAUL

Shape Shifter is an adjustable career casual line for ethically minded women. Trendless clothing with sophisticated style, adjustability, and multiple looks per garment was Marita's solution for creating smaller and more versatile wardrobes for real working women. Combining this concept with local manufacturing, high quality construction, and conscious fabric choices, Shape Shifter clothing is designed to reduce fashion's impact on the environment.

THE SHOW 2016

MORE INFO

BACK TO DESIGNERS

YULIYA YAREMENKO

Yuliya Yaremenko was born in Kiev, Ukraine, and raised in Vancouver, Canada. Her lifelong passion for the fine arts led her to pursue a career in design. After her internship in the Men's design and development departments at Lululemon Athletica (winter 2015), and exchange at the Royal Melbourne Institute of Technology (RMIT) in Australia (spring 2015), Yaremenko discovered her enthusiasm for practical problem-solving and the ideation process.

yuliya.vy@gmail.com
yuliyavy.com

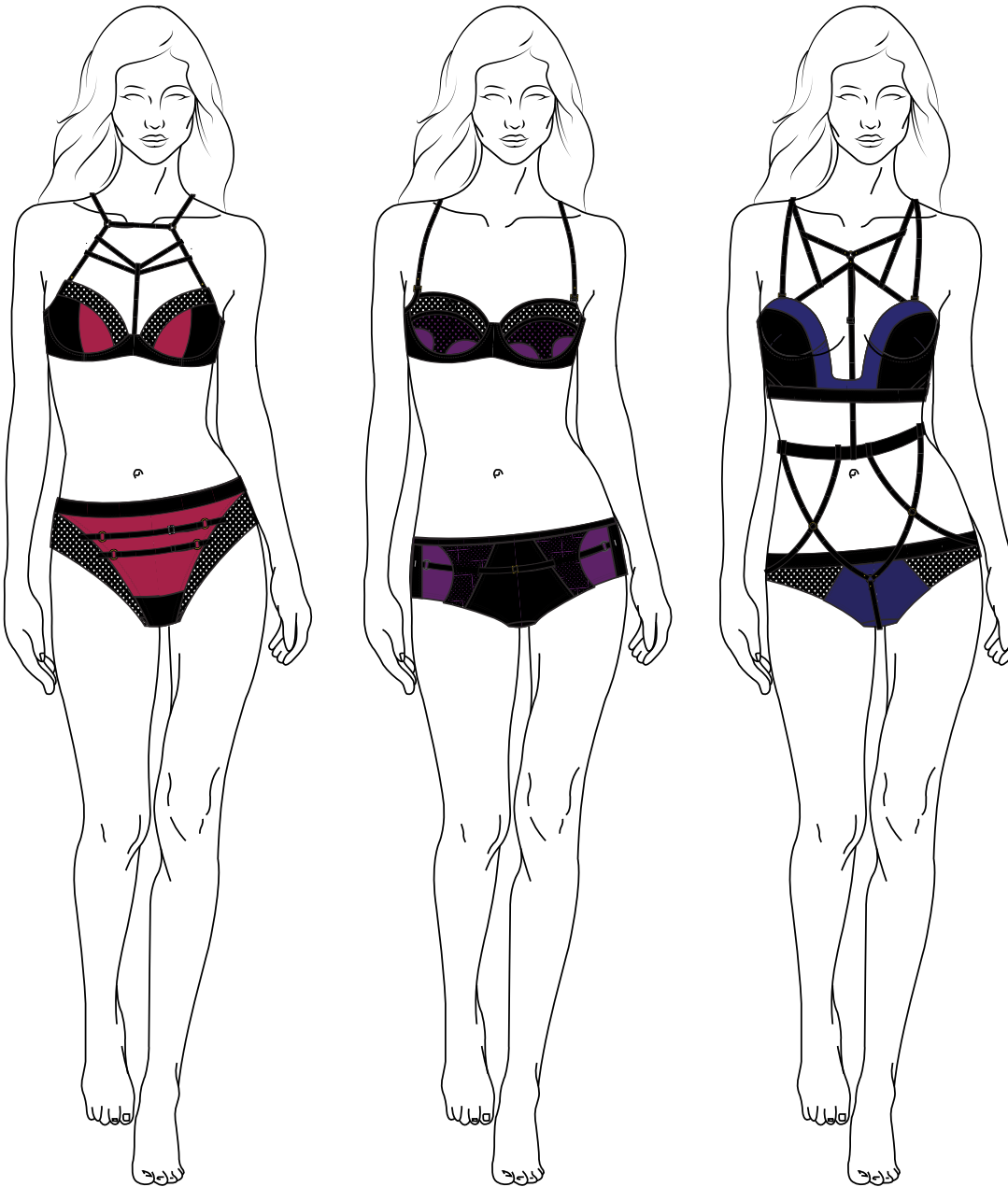




FALL/WINTER 2016

DESIGNER: YULIYA YAREMENKO

Ninetails is a line of erotic intimate apparel for comfortable every-day wear. Each piece caters to the socially-progressive, sex-positive woman who believes that female bodies and sexualities should be celebrated instead of restricted and reshaped.



THE SHOW/ 2016

MORE INFO.

BACK TO DESIGNERS

LAURA HUTCHISON

Laura Hutchison is a designer interested in how we can make fashion more user-centered. This focus stems from her upbringing on Vancouver Island, and an ongoing collaborative student-led research study, which landed them in Hanoi Vietnam, to work at Maxport JSC, in their world class R&D lab.

Laurahutchison8@gmail.com

CURRENT 





CURRENT

FALL/WINTER 2016/17

DESIGNER: LAURA HUTCHISON

Current is a surfing apparel line for west coast women that pushes beyond traditional outerwear into a cross pollination of functional design and wearable tech. Current aids in the thermoregulation of athletes during the pre & post surf portion of the collection by the use of soft circuitry and alternative sewing methods.

THE SHOW/ 2016

MORE INFO.

BACK TO DESIGNERS

CATHERINE KILGOUR

Born in Markham Ontario and raised in the beautiful Okanagan Valley, Kilgour attended Kelowna Senior Secondary. In 2011, she decided to pursue her degree in Fashion Design & Technology at KPU. She is well known for her contagious laughter and positive energy that she puts into every aspect of her work. She advances in technical design development and creative problem solving.

CDKILGOUR@GMAIL.COM

BREAK WATER



BREAK WATER

DESIGNER: CATHERINE KILGOUR

Breakwater inspires adventure, improves action and questions what are you going to do next?

We are a swimwear line created for a full bust, and greater range of motion. Our sizes include 32, 34, 36 bands with a cup size ranging E, F, FF, and G, we have discovered the “sweet spot” in the full bust market and are excited to provide durable and figure flattering swimwear for any water sport.



THE SHOW 2016

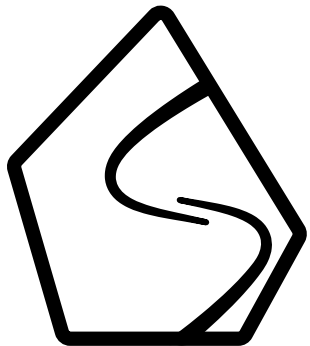
MORE INFO

BACK TO DESIGNERS

SARA LOWE

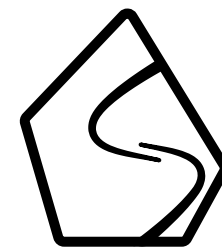
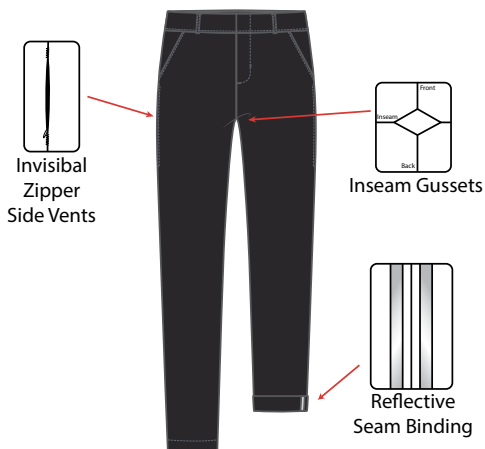
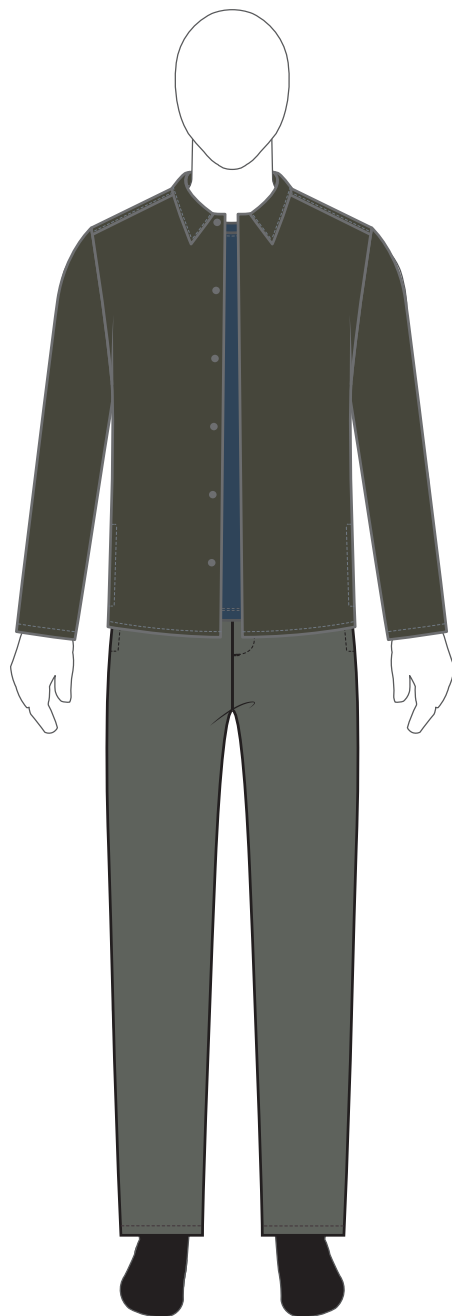
Learning how things are put together has always intrigued Sara. Clothing was the thing that sparked this interest. Sara has a enthusiasm for coming up with new and innovative design concepts. She hopes to make a positive change in the fashion industry while working on new and amazing products in the technical field of fashion.

sara.r.lowe@gmail.com



Surface





Surface

FALL/WINTER 2016
DESIGNER: SARA LOWE

Connectivity for F/W 2016
is a line of men's technical
outerwear for the every day
outdoorist. The brand Surface is
all about meeting the needs of
people who live in the city and
are outdoors for the majority of
their daily lives. All the designs
are low profile, with reduced
bulk and added functionality.

This seasons collections is
inspired by nature and how
from a far it may look simple but
it is until you take a closer look
and discover all the different
functions working together to
create its form.

THE SHOW 2016

MORE INFO

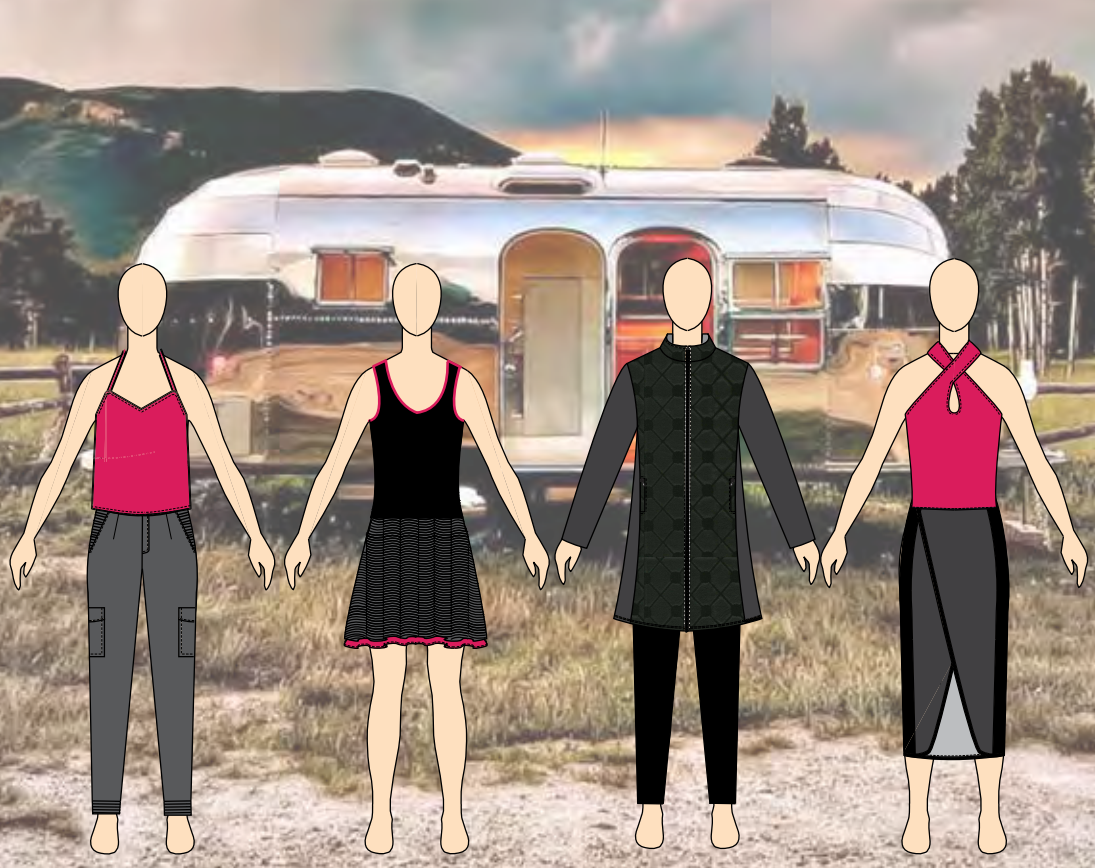
BACK TO DESIGNERS

JESSICA TERNOWSKI

It was during a month long trip, through India that inspired Jessica to take a leap of faith and go back to school and change careers. After three intense months of putting her portfolio together, Jessica applied to KPU's program and began her creative journey as a fashion designer. Her design philosophy reflects a colorful world where ideas and concepts are pushed outside the box! She strives to create designs that are both functional, yet detailed!

jternowski@me.com





SPRING/SUMMER 2017
DESIGNER: JESSICA TURNOWSKI

Drift Clothing Designs focusses on creating sophisticated, good quality, comfortable travel clothing. It incorporates functional fabrics with classic designs, with a focus on a traveller's needs.

The Spring/Summer 2017 collection is "glamping" inspired! There is a new kind of traveller; we like to call the "Chic Camper" or "Glamper Girl"! The "Glamper Girl" loves the outdoors, but maintaining her love for style is important. The seasonal collection "Antithesis" is all about embracing the opposite. It's about inviting the modern city girl to come play outside and experience the outdoors without roughing it! Drift Clothing Designs welcomes the glamper girl with a S'morestini in one hand and a modern chic camping collection in the other!

THE SHOW/ 2016

MORE INFO.

BACK TO DESIGNERS

SARA JONSDOTTIR

Sara Jonsdottir is a strong believer in change and has always known that she wants to make waves with fashion. She knows that clothing can be more than an aesthetic representation of a designer, for Sara it is a channel for advocating change in equality amongst race, gender and sexual orientation. Sara draws much of her inspiration and vision from her unquestioningly feminist homeland, Iceland. She hopes to have a career that combines her love of design and pattern making with her strong voice on social issues.

sara.jonsdottir@kwantlen.net

Revöl
Girl





Revol Girl

Revol Girl

DESIGNER: SARA JONSDOTTIR

By breaking the taboo around menstruation, designer Sara Jonsdottir is debuting her Grad collection of Period-Proof underwear. Revol Girl seeks to offer new solutions and revolutionize the menstrual product industry, an industry that hasn't seen any developments since the late 80's.

*Model: Serenity Hart
Photography: Frances Carter
Photo credit: herself.com*

THE SHOW/2016

MORE INFO.

BACK TO DESIGNERS

MACKENZIE TRIMBLE

Mackenzie was born and raised in Vancouver, BC. She attended high school at South Delta Secondary where she first realized her love for the design process. In grade 9 textiles class she began showing an interest in sewing and pattern making at higher levels than her peers. In grade 10 she was awarded the junior textiles award at SDSS and her teacher suggested that she apply to Kwantlen's Fashion Design program. Following grade 12 she applied to the program; and now, four years later, she is showing off her final collection, NEVADA • KAI.

mackenzient@gmail.com
facebook.com/nevadakai

NK

NEVADA • KAI



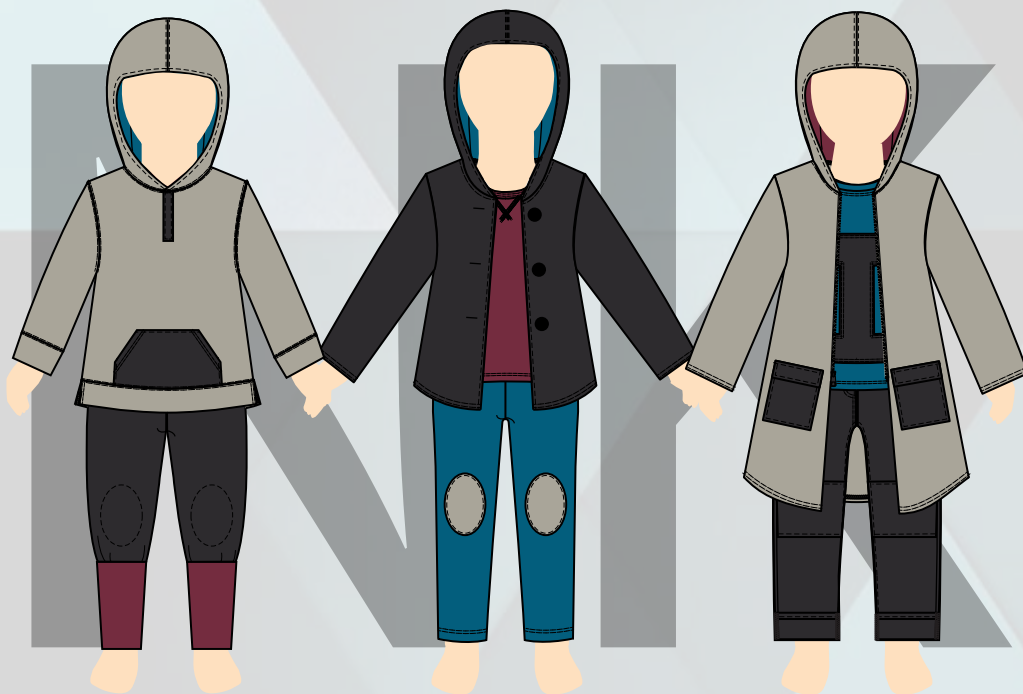
NK

NEVADA • KAI

FALL/WINTER 2016

DESIGNER: MACKENZIE TRIMBLE

NEVADA • KAI's mission is to give children the freedom to be who they are by providing clothing options that are gender-neutral and non-defining. NEVADA • KAI creates high quality childrens apparel for children between the ages of 2-6 whose parents have adopted a gender-neutral parenting style. The core values are quality, durability, longevity, and ease of play. The brands aesthetic is playful, clean, contemporary, and of course gender-neutral.



NEVADA • KAI

Model:??

Makeup/Hair:??

Photography: Supreme and Jasper Lam

THE SHOW/ 2016

MORE INFO.

BACK TO DESIGNERS

NICOLE BOYER

Nicole's roots are on Vancouver Island, where she grew up surrounded by nature and talented friends. Her inherent love of pattern drafting and sewing led her to the local Victoria design scene where an early career alongside local designers lasted several years. Through the Wilson School of Design, Nicole has expanded her technological and creative problem solving skills; these along with her love of nature coalesce in Silva Field & Trade. Winning the technical award at Telio's national design competition, interning at Arc'teryx and networking with local companies have confirmed for Nicole that her passions lay in innovative design.

nicoleboyerdesign@gmail.com
@silvafieldandtrade





FALL/WINTER 2016
DESIGNER: NICOLE BOYER

Silva Field & Trade is a Vancouver based workwear line for women in forestry and realted trades. Focusing on technical details, performance fabrics and superior fit, Silva strives to bring design innovation and styling to women through the safe, comfortable workwear that they need.



Model: Karina Austin
Hair/Makeup: Karina Austin
Photography: Monique Walsh

THE SHOW/ 2016

MORE INFO.

BACK TO DESIGNERS

HAYLEY CLACKSON

Hayley was born and raised on the prairies in a family of craftspeople. The prairie culture influenced Hayley, not only in her thesis inspiration but also in her own lifestyle. It was here on the prairies, that she fostered her love of design and production. An early passion followed by an extensive education have allowed Hayley to hone in on her skills and excel in the worlds of pattern making and hand craft.

hclackson@gmail.com

@nrthrwntwns / nrthrwntwns.ca





FALL/WINTER 2017
DESIGNER: HAYLEY CLACKSON

NRTHRNTWNS Workshop provides fitted work-wear pieces tailored to fit the lifestyle needs of the modern craftsman rather than the traditional tradesman. It is about building a community of makers who want to reflect who they are through clothing, in work but also in everyday life. NRTHRNTWNS Workshop is more than just clothes, it is a lifestyle that is designed to last a lifetime.

Model: Riley Taylor

*Photography: Haley Clackson
(designer)*

THE SHOW/2016

MORE INFO.

BACK TO DESIGNERS

JUSTINE SO

Based in Vancouver, B.C., Justine is an apparel designer with a desire to educate and empower through her work. Creating and designing are Justine's way of expressing who she is, the experiences she has encountered, the emotions she has felt through her experiences in life, and the discoveries of who others are based on research and empathy.

justinesodesigns@gmail.com
www.justineso.com



IRIDESCENT





Model: Alicia Hung
Photography: Justine So



SPRING/SUMMER 2017

DESIGNER: JUSTINE SO

As tween girls transition into young ladies, impressions are made that carry through for the rest of their lives. Iridescent clothing encourages expression of one's unique inner personality, and is designed for the imaginative, self aware tween who wishes to make a difference in her community. The brand strives to engage tweens in discussion about the value within themselves and each other.

THE SHOW/ 2016

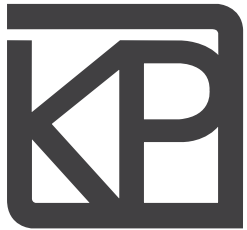
MORE INFO.

BACK TO DESIGNERS

KRISTA PRENDERGAST

Krista is an experienced fashion designer having worked with integrating technology into clothing, couture, wearable art. Her highest accomplishment was designing and manufacturing uniforms for the icepatchers and flower retrievers at the Vancouver 2010 Winter Olympics.

kristaprendergast@telus.net
www.kristaprendergast.com



KRISTA
PRENDERGAST





KRISTA
PRENDERGAST

SPRING/SUMMER 2016

DESIGNER: KRISTA PRENDERGAST

**This collection is focused on
seamlessly integrating fashion
and technology.**

THE SHOW/2016

MORE INFO.

BACK TO DESIGNERS

JUSTINE ELVES

Justine grew up in Qualicum Beach, B.C. With the encouragement from her high-school sewing teacher, she was directed towards Fashion Design at KPU. With a background in figure skating and previously working at lululemon athletica- Justine was destined to create a technical and functional collection to work with its user.

@justinerossalyn

www.justineelvesdesigns.com

JUXTAPOSED

a technical ready-to-wear brand





JUXTAPOSED

a technical ready-to-wear brand

SPRING/SUMMER 2016

DESIGNER: JUSTINE ELVES

Juxtaposed is a brand that believes fashion and function can coexist—where the compelling unseen qualities of technical fabrics come together with minimal and effortless silhouettes. By combining these elements we have created a technical ready to wear brand.

THE SHOW/ 2016

MORE INFO

BACK TO DESIGNERS

BREANNE GATIEN

Breanne Gatien is a Toronto born, final-year fashion design and technology student at Kwantlen Polytechnic University. Graduating from Fanshawe College in London On, she was inspired by her travels to the west coast to actively pursue her career goals in fashion design. Through KPU she has taken her industry knowledge further and developed into a focused and driven apparel designer.

breannegatien@gmail.com

ONE

TWO





ONE TOO

SPRING/SUMMER 2016
DESIGNER: BREANNE GATIEN

One Too fills a gap in the market for everyday loungewear that has been largely ignored for a number of years. The collection offers women pieces that are comfortable to wear at home, yet appropriate to wear in public and still feel stylish. The line appeal to a market actively looking for ways to re-balance, keeping their mental and physical well being in mind. This can be expressed in the popularity of activities like meditation and yoga, and extends into what they chose to eat, drink, and wear. In this respect they are willing to make purchase decisions they feel support an increasingly mindful lifestyle.

Photography: Breanne Gatien
(designer)

THE SHOW/ 2016

MORE INFO.

BACK TO DESIGNERS

MEGHAN BERRY

Meghan Berry is a Vancouver resident, who graduated from Terry Fox secondary school in 2011 is excited to unveil her line Dark Moon at the Imperial.

meghan.k.berry@gmail.com

dark moon

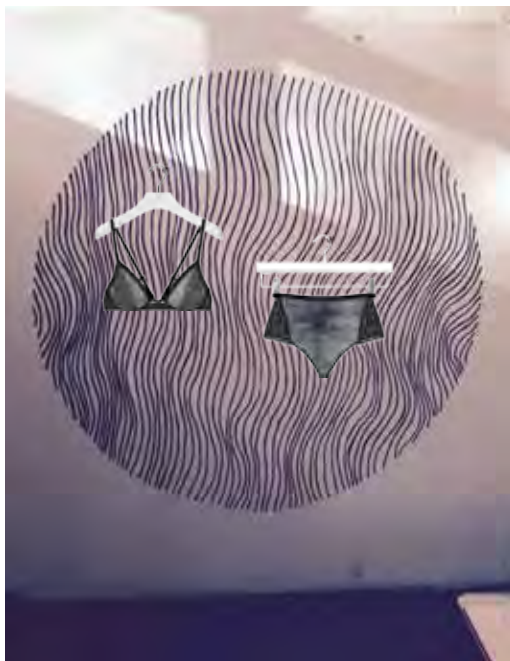
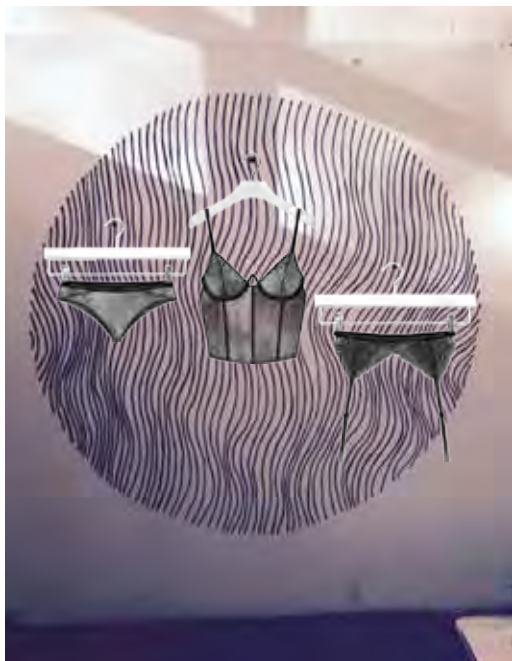




dark moon

SPRING/SUMMER 2017
DESIGNER: MEGHAN BERRY

Dark Moon creates intimates for the creative woman who fits along the spectrum of “girly” and “tomboy”. The intimates feature traditional feminine silhouettes with modern and unconventional fabrics. This woman is not overtly feminine and feels comfortable with not fitting into conventional gender roles. She is independant and unique, with a strong creative intellect.



THE SHOW/ 2016

MORE INFO.

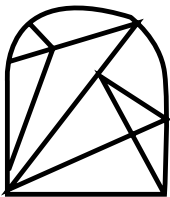
BACK TO DESIGNERS

SHYAN OWTRAM

Shyan is a very ambitious designer who started her own business about a year ago. Called Shyanj Couture which specializes in bridal, evening wear, menswear, and custom designs. She's always wanted her own business hence why she focused on obtaining a degree to further her skills and knowledge in the industry.

shyan.owtram@hotmail.com

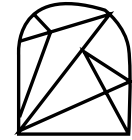
AUTÉNTICO





FALL/WINTER 2016
LUXE COLLECTION

AUTÉNTICO



FALL/WINTER 2016
DESIGNER: SHYAN OW/TRAM

AUTÉNTICO is a business casual wear for men who want more style and comfort in their wardrobe. This collections inspiration and aesthetic is very much European offering a more unique approach to menswear than what is typically out there. The collection is designed so that it's versatile yet innovative in terms of materials and design that are not typically seen in menswear in Vancouver.



MEET THE
MUSE

THE SHOW/ 2016

MORE INFO.

BACK TO DESIGNERS

PARIN AZ MISTRY

Pari's design philosophy evolves around her background in fine arts and a passion for creative design. She aspires to reduce mass consumption by creating thoughtfully designed, one-of-a-kind pieces. Her line, Muse encourages consumers to "buy less but buy well".

pari.r.mistry@gmail.com

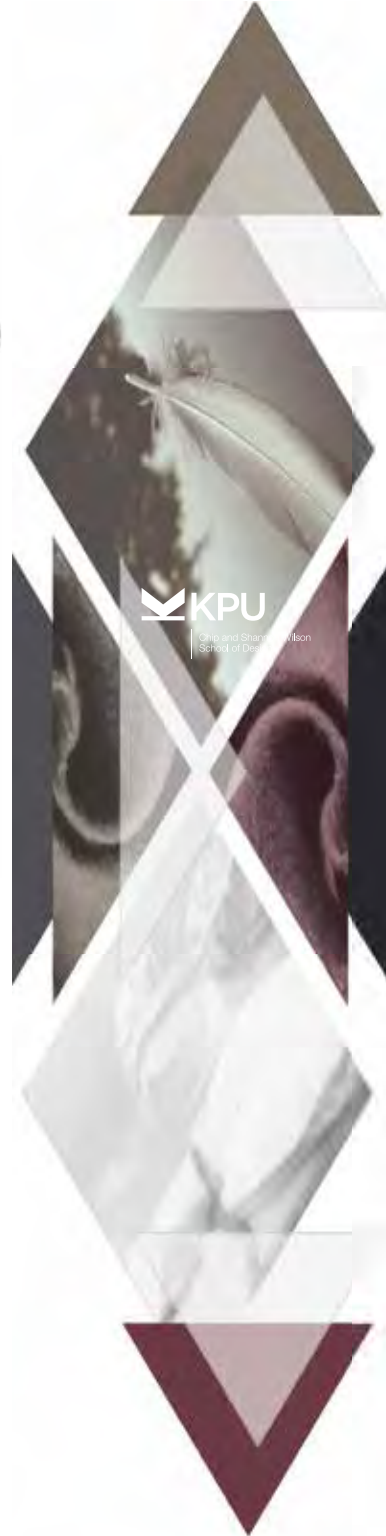
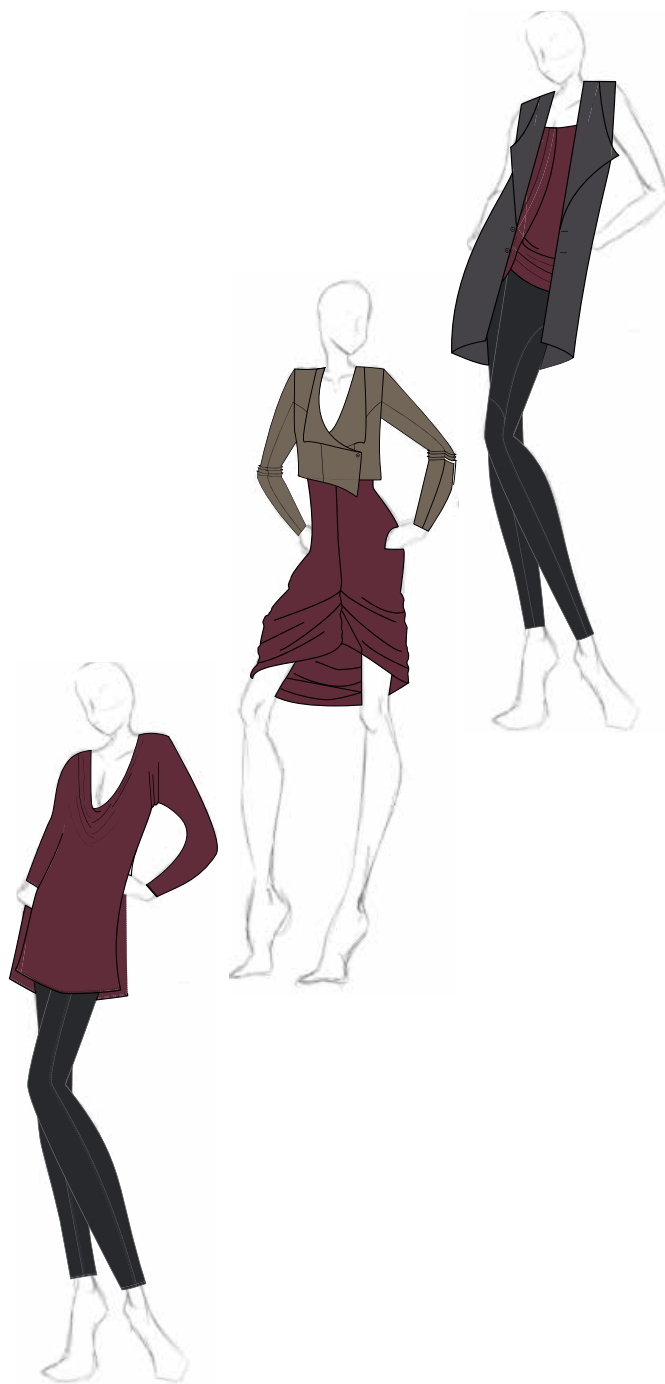
m u s e

THE ULTIMATE SOPHISTICATION



FALL/WINTER 2016
DESIGNER: FIONA PANG

Muse is a contemporary collection driven towards trendless fashion that uses a variety of avant garde draping techniques to create unique and everlasting pieces. Muse supports the slow fashion movement that encourages lengthy use of quality garments through timeless & sophisticated designs in effort to decrease the negative impact of fast fashion.



KPU
Chris and Sharon Wilson
School of Design

THE SHOW 2016

MORE INFO


BACK TO DESIGNERS

AMANDA CARTER

Amanda is a Vancouver-born designer that started with being interested in garment construction and creating things by hand.

She has a passion for knit and crochet work and continues to develop these skills by finding new techniques to learn and create.

amandacarterr@gmail.com

Heir  Looms





Heir & Looms

FALL/WINTER 2015

DESIGNER: AMANDA CARTER

Heir Looms is a casual womenswear line made from only natural fibres, with a focus on hand knitted garments. Fabrics were selected for comfort and breathability benefits and to fill the needs of those looking for natural fibres to fit in with their natural lifestyle choices. The hand knitted garments feature knitted techniques not typically found in mass manufactured knits, and these pieces are meant to be cherished as they can be passed down in either the future or even present day.

Model: ??

Makeup/Hair: ??

Photography: ??

THE SHOW/ 2016

MORE INFO.

BACK TO DESIGNERS

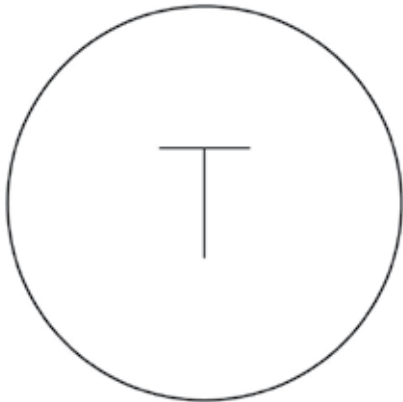
CLAUDIA DEMCAK

Dedication is what motivated Claudia to earn entrance to this rewarding program. Over the past four years her hard work has turned her into a thoughtful, technical designer. Claudia is passionate about sourcing holistic fashion production practices that are mindful of people and the planet. After working on a dissertation called “The Meaningful Impact of Slow Fashion” while on exchange in England a year ago, Claudia decided to focus on slow, purposeful fashion for her final collection.

a@thrivezerowaste

www.claudiademcak.com

claudiamariademcak@gmail.com





FALL/WINTER 2016-17
DESIGNER: CLAUDIA DEMČAK

Thrive Zero Waste Clothing
Company caters to the contemporary, ethically conscious woman. The Thrive woman loves beautiful clothing but is also passionate about fair trade and the health of the Earth. Each piece is inspired by a story and by the zero waste pattern cutting process. Thrive is about innovating mindfully for less waste, more beauty.

*Model: Majka Demčak
Makeup/Hair: Claudia Demčak
Photography: Claudia Demčak*

THE SHOW 2016

MORE INFO

BACK TO DESIGNERS

RINSKE SMITH

Rinske has a love for art, design and the process of creating. Combining the creative with the technical has become a lifelong pursuit - aiming to develop items that are enduring for those who value quality over quantity and unique over fleeting.

rinske-smith.com

rinske.smith@gmail.com

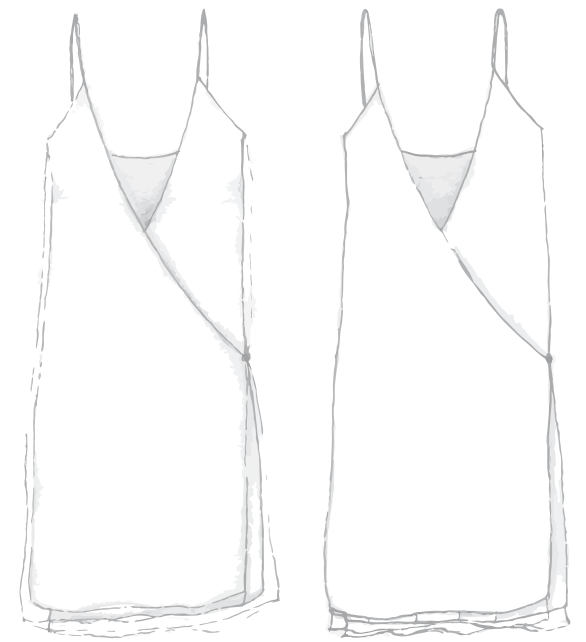
The Rare



The Rare

DESIGNER: RINSKE SMITH

The Rare is a collection of beautiful and effortless eveningwear - presenting high quality and unique pieces for those who buy deliberately and buy to keep. The Rare woman knows who she is and buy for herself. She breaks the rules to follow her own path. She will easily wear a ready-to-wear dress for her wedding and continue to wear it for years to come.



Photography: Rachel Schwarz

THE SHOW/ 2016

MORE INFO.

BACK TO DESIGNERS

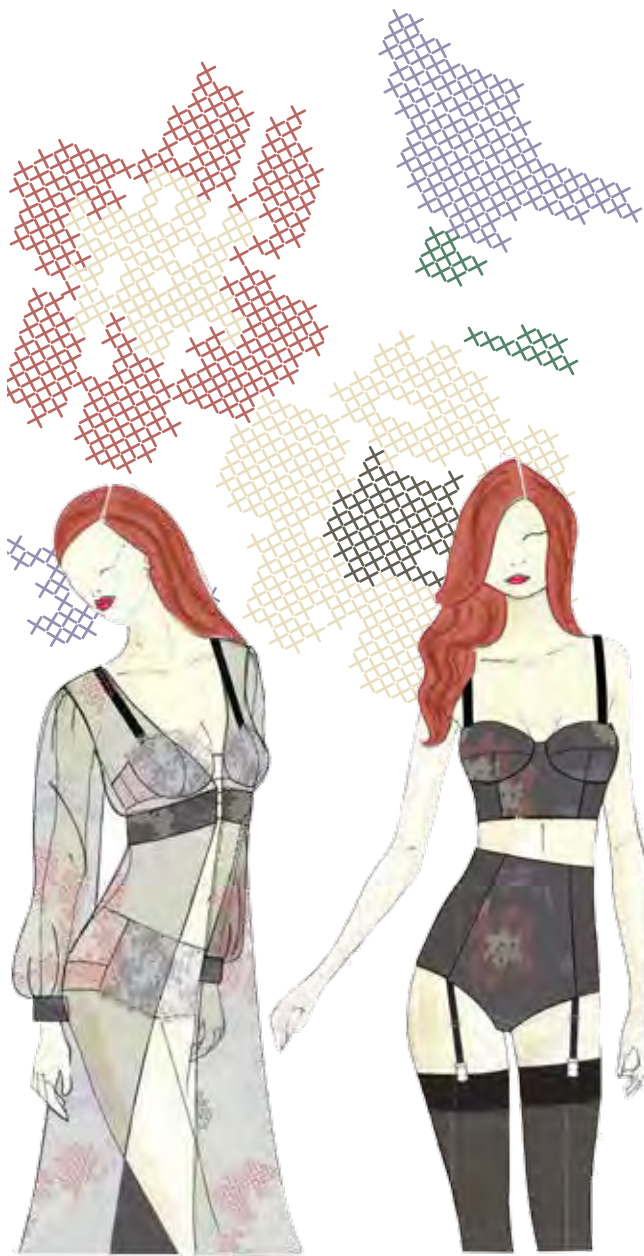
ASHLEY MORIN

Coming from an extensive musical background in piano and attending opera and Broadway productions inspired a love for costume design and film studies. Ashley entered her post-secondary studies having received KPU's Leaders of Tomorrow President's Entrance Scholarship and her A.R.C.T. in piano performance. Ashley's curiosity and determination for personal excellence led her to be selected as a finalist for Telio's 2015 national competition. During a semester abroad in Berlin, Germany at HTW Ashley developed cultural sensitivity and a global mind-set to direct her.

www.ashleymorin.com

[@ginger_and_flora_intimates](https://www.instagram.com/ginger_and_flora_intimates)





SPRING/SUMMER 2017
DESIGNER: ASHLEY MORIN

Ginger & Flora designs exclusively for sizes 30DD-34G that is delicate, luxurious, and beautifully crafted. With the focus on exceptional fit and comfort when constructing garments, the combination of function and fashion is essential to our brand. Each stitch and seam has a purpose to create silhouettes that compliment and enhance the body. Nostalgic hand embroidered details contrast digitally printed textiles on silhouettes reminiscent of decades past for our S/S'17 collection Heirloom.

THE SHOW/ 2016

MORE INFO

BACK TO DESIGNERS

ALICIA WILLIAMS

Alicia began pursuing fashion in high school in Calgary, Alberta, where she then moved to Vancouver to further her education and professional career. While studying Fashion Design and Technology at Kwantlen she completed a semester abroad in Berlin, Germany where she became inspired by the history, culture and street style in Berlin. Alicia has translated her inspirations in her forth year collection in combination with her interest in tailored menswear.

Aky.williams@gmail.com
www.aliciakwilliams.com

LEVVIN



LEVVIN

DESIGNER: ALICIA WILLIAMS

Levvin is a company driven to revolutionize menswear through color, prints and innovative details. Levvin is not only focused on providing diversity in menswear, but also on producing luxe quality apparel fabric. In all our garments we use traditional tailoring techniques to create high end garments. Our custom prints are designed in-house and are exclusive to our garments.



THE SHOW/ 2016

MORE INFO.

BACK TO DESIGNERS

SAMANTHA STRINGER

Using fashion as artistic expression, Sam Stringer is a couture fashion designer and photographer working out of Vancouver BC. By fusing the fashion and photographic worlds, she creates unique pieces that showcase the artistry behind fashion, aiming to put value back into clothing. Her work celebrates local artists, and collaboration breeds her creativity.

imsiperko@gmail.com

siperkodesign.com



Sam Stringer





FALL/WINTER 2016

DESIGNER: SAMANTHA STRINGER



Vesuvius, the premier collection from Sam Stringer, showcases luxurious evening gowns for black tie events. By providing the creative, motivated entrepreneur with an artistic extension of her brand, Vesuvius gowns combine traditional mastery with modern aesthetic. Vesuvius features a signature dress, Joan, created in collaboration with local artist Jack Wass, reinventing his original painting “Come Home” into a unique gown.



Makeup/hair: Rachel Sargeant
Model: Heidi Chan
Photography: Sam Stringer

THE SHOW 2016

[MORE INFO](#)

[BACK TO DESIGNERS](#)